

網路使用說明

版權說明和註冊商標

No part of this publication may be reproduced, stored in a retrieval system, or transmitted in any form or by any means, mechanical, photocopying, recording, or otherwise, without the prior written permission of Seiko Epson Corporation. No patent liability is assumed with respect to the use of the information contained herein. Neither is any liability assumed for damages resulting from the use of the information contained herein.

Neither Seiko Epson Corporation nor its affiliates shall be liable to the purchaser of this product or third parties for damages, losses, costs, or expenses incurred by purchaser or third parties as a result of: accident, misuse, or abuse of this product or unauthorized modifications, repairs, or alterations to this product, or (excluding the U.S.) failure to strictly comply with Seiko Epson Corporation's operating and maintenance instructions.

Seiko Epson Corporation and its affiliates shall not be liable against any damages or problems arising from the use of any options or any consumable products other than those designated as Original Epson Products or Epson Approved Products by Seiko Epson Corporation.

Microsoft®, Windows®, and Windows Vista® are registered trademarks of Microsoft Corporation.

Apple®, Macintosh®, Mac®, Mac OS®, AppleTalk®, and Bonjour® are registered trademarks of Apple, Inc. Apple Chancery, Chicago, Geneva, Hoefler Text, Monaco and New York are trademarks or registered trademarks of Apple, Inc.

EPSON and EPSON ESC/P are registered trademarks and EPSON AcuLaser and EPSON ESC/P 2 are trademarks of Seiko Epson Corporation.

HP and HP LaserJet are registered trademarks of the Hewlett-Packard Company.

PCL is a registered trademark of Hewlett-Packard Company.

Adobe, the Adobe logo and PostScript3 are trademarks of Adobe Systems Incorporated, which may be registered in certain jurisdictions.

CompactFlash is a trademark of SanDisk Corporation, registered in the United States and other countries.

This product includes RSA BSAFE® Cryptographic software of EMC Corporation.

RSA and BSAFE are registered trademarks or trademarks of EMC Corporation in the United States and other countries.



This product contains Runtime Modules of IBM Rational Rhapsody, Copyright IBM Corporation 2008. All Rights Reserved.

This product includes software developed by the University of California, Berkeley, and its contributors.

General Notice: Other product names used herein are for identification purposes only and may be trademarks of their respective owners. Epson disclaims any and all rights in those marks.

Copyright © 2012 Seiko Epson Corporation. All rights reserved.

目錄

安全說明

警告、注意、重要事項及附註.....	7
--------------------	---

第 1 章 前言

關於您的印表機.....	8
關於本使用說明.....	8
作業環境.....	9
雷射印表機.....	9
網路界面的特性.....	9
網路界面操作.....	10
狀態燈號.....	10
網路連接器.....	11
關於軟體.....	11

第 2 章 如何使用

概要.....	12
選擇一種列印方法.....	13
從 Windows 進行列印.....	13
從 Macintosh 進行列印.....	13
列印方法的功能.....	13
在您的電腦上安裝元件.....	14
關於在您的電腦上安裝元件.....	14
Windows 8/7/Vista/Server 2012/Server 2008.....	14
Windows XP.....	16
Windows Server 2003.....	17
Macintosh.....	18
設定網路界面.....	19
將網路界面連接至網路上.....	19
設定網路界面 (Windows 使用者適用).....	20
設定網路界面 (Macintosh 使用者適用).....	20
安裝印表機驅動程式.....	21

關於安裝印表機驅動程式.....	21
Windows 8/7/Vista/Server 2012/Server 2008.....	22
Windows XP.....	26
Windows Server 2003.....	30
Macintosh.....	34

第 3 章 網路軟體

EpsonNet Config for Windows.....	36
關於 EpsonNet Config.....	36
系統需求.....	36
安裝 EpsonNet Config.....	37
開啓 EpsonNet Config 進階使用說明.....	37
EpsonNet Config for Macintosh.....	37
關於 EpsonNet Config.....	37
系統需求.....	38
安裝 EpsonNet Config.....	38
開啓 EpsonNet Config 進階使用說明.....	38
EpsonNet Config with Web Browser.....	38
關於 EpsonNet Config.....	38
使用 EpsonNet Config with Web Browser 設定網路界面.....	39
開啓畫面.....	41
EpsonNet Print.....	42
關於 EpsonNet Print.....	42
系統需求.....	42
安裝 EpsonNet Print.....	42
Windows 8/7/Vista/XP/Server 2012/Server 2008/Server 2003 使用者.....	42
設定印表機連接埠.....	48

第 4 章 解決問題的方法

一般問題.....	51
無法設定網路界面或無法由網路進行列印.....	51
即使您已為電腦及印表機指定 IP 位址，仍無法列印.....	51
無法啓動 EpsonNet Config.....	51
啓動 EpsonNet Config 時，畫面上顯示 EpsonNet Config cannot be used because no network is installed 的訊息.....	51

傳送設定至網路界面時，畫面上顯示 Could not complete communicating configuration data 的訊息.....	52
無法開啓 EpsonNet Config with Web Browser.....	52
在 EpsonNet Config 對話框中未出現機型名稱及 IP 位址.....	52
列印網路狀態表.....	53

第 5 章 系統管理員的提示

使用印表機控制面板設定 IP 位址.....	54
Network Menu.....	55
使用 IPsec、存取控制及 IEEE 802.1X 功能確保通訊安全.....	56
IPsec 通訊協定.....	56
存取控制.....	57
IEEE 802.1X.....	57

附錄 A 章 軟體授權條款

Open Source Software Licenses.....	58
GNU GPL.....	58
GNU LGPL.....	65
BSD License.....	75
Sun RPC License.....	76
Net-SNMP License.....	77
ncftp License.....	81
Bonjour.....	84
WPA supplicant.....	85
Other Software Licenses.....	86
Info-ZIP copyright and license.....	86

索引

安全說明

警告、注意、重要事項及附註

**警告**

請務必小心遵守以免身體嚴重受傷。

**注意**

請務必小心遵守以免身體受傷。

**重要事項**

請務必遵守以免損害您的設備。

附註

包含有關印表機操作的重要資訊及實用小祕訣。

第 1 章

前言

關於您的印表機

印表機具有一個內建的乙太網路界面，可在任何地方使用 10Base-T、100Base-TX 和 1000Base-T 乙太網路與網路連線。內建的乙太網路界面在本手冊中也稱為網路界面，在連接至網路上時，它會自動選擇正確的連線標準。此外，它還可自動選擇適合的網路通訊協定。

因為網路界面支援多種通訊協定，並可自動偵測您網路上的通訊協定，因此您可以從 Microsoft® Windows® 和 Apple® Macintosh® 應用程式中進行列印。

使用 Software Disc 輕鬆設定要在 TCP/IP 網路上使用的網路界面，並安裝印表機驅動程式。您可以立刻於 TCP/IP 網路上使用印表機。

如果您想設定像是 TCP/IP、WSD、LLTD、IPP/IPPS、UPnP、Bonjour、MS Network 及 SNMP 之類的網路界面通訊協定，可使用產品所提供的設定工具程式 EpsonNet Config，快速而輕易地設定網路界面，以使用這些通訊協定。

附註：

EpsonNet Config 工具程式可設定網路界面，僅與您網路上存在的通訊協定相配合運作。這並不表示您可以在您的網路或作業系統上使用上述所有通訊協定。網路界面可使用的通訊協定依作業系統及網路設定的不同而有所變化。

關於本使用說明

本網路使用說明包含關於在網路上使用網路界面的相關資訊，其中包括：如何設定網路界面、安裝設定軟體，以及修改您印表機及電腦的網路設定之相關說明。

若想獲得關於印表機的資訊，請參考進階使用說明。

附註：

- ❑ 若想瀏覽線上使用說明，您必須於電腦中安裝 Adobe Reader 或 Adobe Acrobat Reader。
- ❑ 本使用說明是為網路系統管理員所編寫，其中所含的許多步驟皆需要詳細的網路知識及系統管理員權限。

- ❑ 「網路管理員」指的是負責維護網路的人。在本使用說明中，「Administrator」與「Supervisor」均為管理員。
- ❑ 本使用說明中的「網路界面」指的是印表機內建的乙太網路界面。
- ❑ 在本使用說明中某些螢幕擷取圖片所列出的印表機名稱，可能會與您的印表機有所不同，但此差異不影響操作指示。
- ❑ 所支援的作業系統依印表機機型而有不同。請參考您印表機的進階使用說明，以瞭解所支援的作業系統。

作業環境

網路界面支援下列環境。

雷射印表機

作業系統	通訊協定	IPv4	IPv6
Windows 8	TCP/IP (標準 TCP/IP 連接埠)	支援	支援
Windows 7	TCP/IP (EpsonNet Print 連接埠)	支援	不支援
Windows Vista			
Windows Server 2012			
Windows Server 2008			
Windows XP (Home、Professional)	TCP/IP (標準 TCP/IP 連接埠)	支援	不支援
Windows Server 2003	TCP/IP (EpsonNet Print 連接埠)	支援	不支援
Mac OS X 10.7	Bonjour	支援	支援
Mac OS X 10.6			
Mac OS X 10.5			

網路界面的特性

- ❑ 使用內建乙太網路界面連接您的 Epson 印表機，在本使用說明中我們稱為「網路界面」。
- ❑ 支援多種通訊協定，如 TCP/IP、WSD、LLTD、IPP/IPPS、UPnP、Bonjour、MS Network 及 SNMP。

- ❑ 支援 10Base-T、100Base-TX 和 1000Base-T 乙太網路。
- ❑ 支援 Mac OS X 10.5 或以上版本的「Bonjour」。
- ❑ 透過過濾用戶端電腦的 IP 位址，提供存取控制印表機的能力。
- ❑ 支援 IPP 和 HTTPS 通訊協定適用的 SSL (Secure Sockets Layer)。
- ❑ 支援 IPsec。
- ❑ 支援 IEEE 802.1x。
- ❑ 支援 EpsonNet Config with Web browser，允許使用網路瀏覽器設定及監控您的印表機。

網路界面操作

狀態燈號

指示燈號可為您提供網路界面操作的重要資訊。

雷射印表機

狀態燈號	數據燈號	網路狀態
熄滅	綠色	就緒 (10 M link)
熄滅	綠色 (閃爍)	接收封包 (10 M link)
橙色	綠色	就緒 (100 M link)
橙色	綠色 (閃爍)	接收封包 (100 M link)
綠色	綠色	就緒 (1000 M link)
綠色	綠色 (閃爍)	接收封包 (1000 M link)
熄滅	熄滅	深度睡眠模式 / 關機模式
綠色	熄滅	超省電模式 (1000 M link)

網路連接器

RJ-45 型連接器：此連接器是用來連接乙太網路連接線至網路。您可在 10Base-T、100Base-TX 和 1000Base-T 乙太網路上使用這條連接線。



重要事項：

您必須使用下列遮蔽式雙絞線將網路界面連接至網路上。

- ❑ 在 10Base-T 或 100Base-TX 連線上使用 Category-5 或更高等級
- ❑ 1000Base-T 連線上使用 Category-6 或更高等級

關於軟體

印表機內附的 Software Disc 包含下列網路軟體。

附註：

所提供的軟體依您的印表機機型而有不同。

- ❑ EpsonNet Config for Windows 是供 Windows 系統管理員使用的設定工具，可讓您為網路界面設定各種不同的通訊協定，包括 TCP/IP、MS Network、IPP 及 SNMP。請參考 第36 頁 “EpsonNet Config for Windows”。
- ❑ EpsonNet Config for Macintosh 是供 Macintosh 系統管理員使用的設定工具，可讓您為網路界面設定 TCP/IP 及 IPP。請參考 第37頁 “EpsonNet Config for Macintosh”。
- ❑ EpsonNet Config with Web Browser 是供系統管理員使用的 Web 設定工具，可讓您為網路界面設定 TCP/IP、MS Network、IPP 及 SNMP。請參考 第38頁 “EpsonNet Config with Web Browser”。
- ❑ EpsonNet Print 是一種在 TCP/IP 網路上提供 Epson 印表機點對點列印的工具程式。請參考 第42頁 “EpsonNet Print”。

第 2 章

如何使用

概要

本節說明如何設定於網路上使用的網路界面之一般程序。

1. 檢查網路界面操作。

檢查網路界面的功能及操作，例如狀態燈號及 RJ-45 型連接器。詳細說明，請參考 第10頁 “網路界面操作”。

2. 選擇一種列印方法。

選擇一種適合您網路環境及作業系統의 列印方法。若您不確定，請參考 第13頁 “從 Windows 進行列印” 或 第13頁 “從 Macintosh 進行列印” 以瞭解詳情。

3. 在您的電腦上安裝必要的元件。

請確定電腦上已安裝必要的元件 (例如：TCP/IP)，並已設定電腦的網路設定 (例如：IP 位址、子網路遮罩等)。詳細說明，請參考 第14頁 “關於在您的電腦上安裝元件”。

4. 將網路界面連接至網路上。

將網路界面連接至網路上。詳細說明，請參考 第19頁 “將網路界面連接至網路上”。

5. 設定網路界面並安裝印表機驅動程式。

詳細說明，請參考 第20頁 “設定網路界面 (Windows 使用者適用)” 或 第20頁 “設定網路界面 (Macintosh 使用者適用)”。

6. 如有需要，請使用 EpsonNet Config 設定網路界面的網路設定值。

使用 EpsonNet Config 設定網路界面。Windows 使用者請參考 第36頁 “關於 EpsonNet Config”。Macintosh 使用者請參考 第37頁 “關於 EpsonNet Config”。

選擇一種列印方法

從 Windows 進行列印

請檢查您的網路上是否有 Windows 8/7/Vista/XP/Server 2008/Server 2003 列印伺服器，並使用下列建議事項。

附註：

在此僅介紹建議的列印方法。請參考 第13頁 “列印方法的功能” 以瞭解其他方法。

若沒有 Windows 8/7/Vista/XP/Server 2012/Server 2008/Server 2003 列印伺服器

我們建議進行 TCP/IP 列印。請參考 第22頁 “Windows 8/7/Vista/Server 2012/Server 2008” 、第26頁 “Windows XP” 或 第30頁 “Windows Server 2003” 。

若有 Windows 8/7/Vista/XP/Server 2012/Server 2008/Server 2003 列印伺服器

在伺服器上，設定要連接的印表機，並將其轉為共享印表機。然後用戶端就可以使用此共享印表機進行列印。

從 Macintosh 進行列印

Mac OS X 10.5 或以上版本

- ☐ Bonjour

列印方法的功能

本節說明您所能選擇的列印方法之各項功能。

TCP/IP 列印

優點

- ☐ 不需以電腦做為網路界面。
- ☐ 在 Windows 8/7/Vista/XP/Server 2008/Server 2003 上不需要特殊工具程式。
- ☐ 您可使用 EPSON 印表機監控程式查看印表機狀態。

- ❑ 您可透過路由器進行列印。

缺點

- ❑ 您必須設定 TCP/IP。

網路列印

優點

- ❑ 您可使用網路上的印表機進行列印。

缺點

- ❑ 無法使用 EPSON 印表機監控程式。
- ❑ 需要 TCP/IP 及 DNS 設定。
- ❑ 在 Windows 8/7/Vista/XP/Server 2012/Server 2008/Server 2003 上，您無法共用網路印表機。

在您的電腦上安裝元件

關於在您的電腦上安裝元件

在設定網路界面及從電腦列印之前，您必須安裝必要元件 (例如：TCP/IP)，然後依據您所想要的列印方法，為您的電腦指定位址及子網路遮罩。請參考本章中適合您作業系統的說明。

附註：

- ❑ 安裝時可能需要 Windows 作業系統 CD-ROM 光碟。
- ❑ 在使用 TCP/IP 進行列印時，您必須設定電腦的 IP 位址、子網路遮罩以及預設閘道。

Windows 8/7/Vista/Server 2012/Server 2008

請依照下列程序安裝必要的元件。

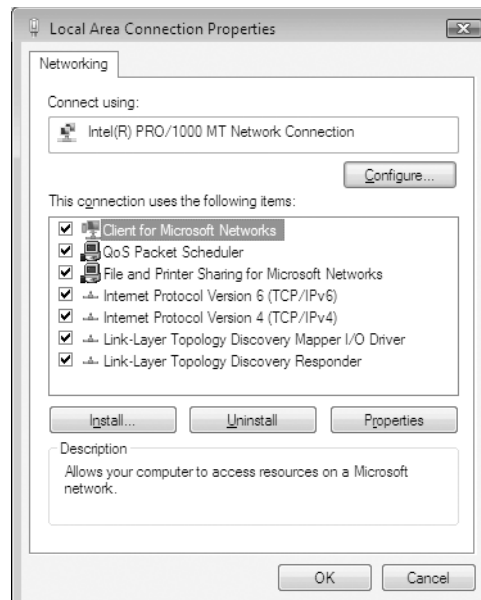
1. 開啓[控制台]，然後點選 [檢視網路狀態及工作] 或雙擊 [網路和共用中心]。

- 點選[乙太網路] (Windows 8/Server 2012)、[區域連線] (Windows 7) 或[檢視狀態] (Windows Vista/Server 2008)，然後按下[內容]鍵。

附註：

若出現 使用者帳戶控制 畫面，請按下 [是] 或 [繼續] 鍵。

- 檢查清單中是否有下列必要元件。



下表列出以 EpsonNet Config 設定網路界面時的所需元件。

EpsonNet Config 的設定畫面	必要元件
TCP/IP, WSD, IPP/IPPS, UPnP, Bonjour, MS Network	Internet Protocol (TCP/IP IPv4) 或 Internet Protocol (TCP/IP IPv6)

下表列出網路列印的所需元件。

列印方法	必要元件
TCP/IP 列印	Internet Protocol (TCP/IP IPv4) 或 Internet Protocol (TCP/IP IPv6)

- 雙擊 Local Area Connection Properties (本機區域連線內容) 對話框上的 [網際網路通訊協定第 4 版 (TCP/IPv4)] 或 [網際網路通訊協定第 6 版 (TCP/IPv6)]，以開啟內容對話框。設定 IP 位址、子網路遮罩，然後按下 [確定] 鍵。

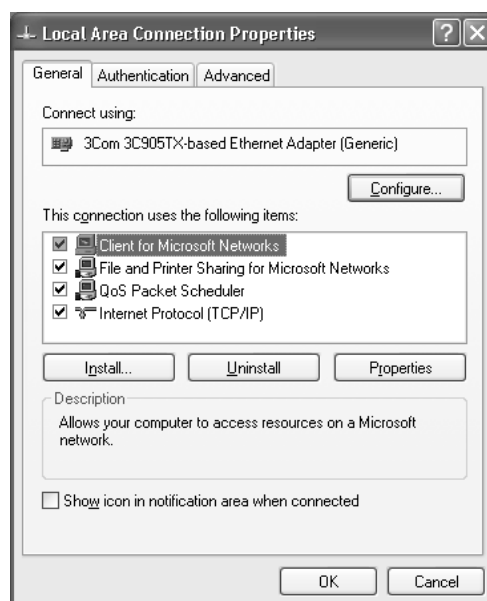
5. 重新啟動電腦。

現在已安裝好必要元件。請前往單元 第19頁 “設定網路界面”。

Windows XP

在 Windows XP 上請使用下列程序安裝必要元件。

1. 按下 [開始] 鍵，指向 [控制台]，然後點選 [網路和網際網路連線]。選擇 [網路連線]。
2. 在 [區域網路或高速網際網路] 下，點選 [區域連線] 圖示。
3. 在 [網路工作] 下，點選 [變更這個連線的設定]。
4. 檢查清單中是否有下列必要元件。



下表列出以 EpsonNet Config 設定網路界面時的所需元件。

EpsonNet Config 的設定畫面	必要元件
TCP/IP, WSD, IPP/IPPS, UPnP, Bonjour, MS Network	Internet Protocol (TCP/IP)

下表列出網路列印的所需元件。

列印方法	必要元件
TCP/IP 列印	Internet Protocol (TCP/IP)

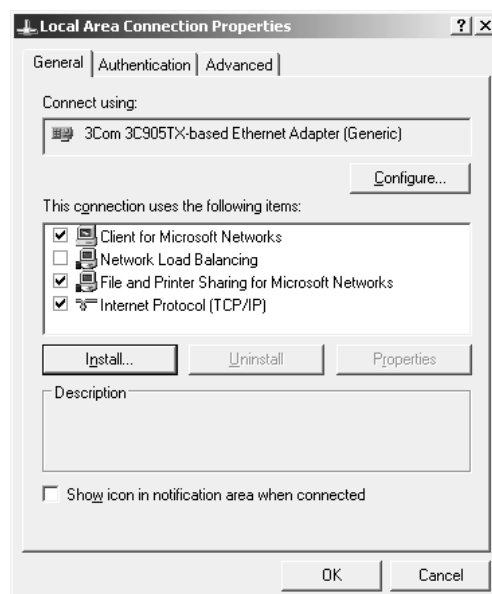
5. 雙擊 Local Area Connection Properties (區域連線內容) 對話框上的 [網際網路通訊協定 (TCP/IP)]，以開啓 Internet Protocols (TCP/IP) Properties (網際網路通訊協定 (TCP/IP) 內容) 對話框。設定 IP 位址、子網路遮罩，然後按下 [確定] 鍵。
6. 重新啟動電腦。

現在已安裝好必要元件。請前往單元 第19頁 “設定網路界面”。

Windows Server 2003

在 Windows Server 2003 上請使用下列程序安裝必要元件。

1. 按下 [開始] 鍵，移至 [控制台]，然後點選 [網路連線]。按下 [區域連線] 鍵。
2. 按下 [內容] 鍵。
3. 檢查清單中是否有下列必要元件。



下表列出以 EpsonNet Config 設定網路界面時的所需元件。

EpsonNet Config 的設定畫面	必要元件
TCP/IP, WSD, IPP/IPPS, UPnP, Bonjour, MS Network	Internet Protocol (TCP/IP)

下表列出網路列印的所需元件。

列印方法	必要元件
TCP/IP 列印	Internet Protocol (TCP/IP)

- 雙擊 Local Area Connection Properties (區域連線內容) 對話框上的 [網際網路通訊協定 (TCP/IP)]，以開啓 Internet Protocols (TCP/IP) Properties (網際網路通訊協定 (TCP/IP) 內容) 對話框。設定 IP 位址、子網路遮罩，然後按下 [確定] 鍵。
- 重新啓動電腦。

現在已安裝好必要元件。請前往單元 第19頁 “設定網路界面”。

Macintosh

請依下列步驟為您的 Macintosh 指定 IP 位址、子網路遮罩。

Mac OS X

- 從 Apple 功能表中，選擇 [系統偏好設定]。
- 開啓 [網路] 控制面板。選擇 [TCP/IP] 標籤。

附註：

在 Mac OS X 10.5 或以上版本中，在網路控制面板上選擇 [乙太網路] 做為連線方法，從設定功能表選擇指定 IP 位址的方法，然後指定 IP 位址。

- 從 Show (顯示) 下拉式功能表中選擇 [內建乙太網路]。
- 如有需要，請指定 IP 位址及其他設定。
- 請按下 [套用] 鍵，以儲存所有變更。

請前往單元 第19頁 “設定網路界面”。

設定網路界面

將網路界面連接至網路上

請依下列操作說明，將網路界面連接至網路上。

1. 請確定已關閉印表機電源。
2. 將網路連接線的一端與網路界面的 RJ-45 型連接器相連，另一端則連接至網路上。



重要事項：

❑ 您必須使用下列遮蔽式雙絞線將網路界面連接至網路上。

-- 在 10Base-T 或 100Base-TX 連線上使用 Category-5 或更高等級

-- 1000Base-T 連線上使用 Category-6 或更高等級

❑ 請勿將網路界面與電腦直接相連。請確定使用集線器，將網路界面連接至網路上。

附註：

您可以使用 10Base-T、100Base-TX 和 1000Base-T 乙太網路。當您列印大量資料時，我們建議您使用網路流量低的高速網路。

3. 開啓印表機的電源。在狀態燈號熄滅之後，列印出網路狀態表。



重要事項：

在關閉印表機電源後，請於狀態燈號熄滅後再將它開啓，否則網路界面可能無法正確運作。

Mac OS X 10.5 或以上版本的注意事項：

由於印表機支援 Bonjour，且預設為開啓，因此只要將印表機連線至網路，您便可在網路上使用它。如欲停用 Bonjour 設定，請使用印表機的控制面板。詳細說明請參考 第54頁“使用印表機控制面板設定 IP 位址”。

現在您可設定網路界面，以使用 TCP/IP 網路，同時使用印表機內附的 Software Disc 安裝印表機驅動程式。

若您使用 Windows，請參考 第20頁“設定網路界面 (Windows 使用者適用)”。

若您使用 Macintosh，請參考 第20頁“設定網路界面 (Macintosh 使用者適用)”。

設定網路界面 (Windows 使用者適用)

設定 TCP/IP 網路上使用的網路界面，並在您的電腦上安裝印表機驅動程式。

1. 請確定印表機已連上網路 (集線器或路由器)。
2. 將 Software Disc 放入 CD/DVD 光碟機。
3. 將會自動開啓 Epson Install Navi 畫面。

若未出現 Epson Install Navi 畫面，請雙擊 Software Disc 上的 [InstallNavi.exe]。

4. 點選 [我同意軟體授權合約的內容] 檢查盒，然後按下 [下一步] 鍵。
5. 即出現 軟體選擇 畫面。若要透過網路進行列印，請點選 [Epson 驅動程式及工具程式] 檢查盒及 [Epson 網路工具程式] 檢查盒，然後按下 [安裝] 鍵。

附註：

若使用 USB 連接線將印表機連接至電腦，請取消點選 [Epson 網路工具程式] 檢查盒。

6. 即開始軟體安裝。請依照螢幕上的操作指示完成安裝作業。

設定網路界面 (Macintosh 使用者適用)

設定 TCP/IP 網路上使用的網路界面，並在您的電腦上安裝印表機驅動程式。

1. 請確定印表機已連上網路 (集線器或路由器)。
2. 將 Software Disc 放入 CD/DVD 光碟機。

將自動開啓 [EPSON] 資料夾。

3. 雙擊 EPSON 資料夾中的 [Install Navi] 圖示。

將會開啓 Epson Install Navi 畫面。

4. 請在授權畫面中輸入使用者名稱及密碼。
5. 點選 [我同意軟體授權合約的內容] 檢查盒，然後按下 [下一步] 鍵。

6. 即出現 軟體選擇 畫面。若要透過網路進行列印，請點選 [Epson 驅動程式及工具程式] 檢查盒及 [Epson 網路工具程式] 檢查盒，然後按下 [安裝] 鍵。

附註：

若使用 USB 連接線將印表機連接至電腦，請取消點選 [Epson 網路工具程式] 檢查盒。

7. 即開始軟體安裝。請依照螢幕上的操作指示完成安裝作業。

設定印表機

Mac OS X 10.5 或以上版本

1. 開啓 [系統偏好設定]。
2. 開啓 [列印與傳真]。
3. 按下 [+] 鍵以新增印表機。
4. 選擇想要與 Bonjour 相連的印表機機型。

附註：

若您的印表機未顯示想要的連線，請點選 [更多印表機]，從下拉式清單中選擇想要的連線，然後選擇印表機機型。

5. 按下 [新增] 鍵。

現在您可以在 TCP/IP 網路上使用印表機。

附註：

若您的產品支援掃描功能，請參考產品的進階使用說明，以進行設定。

安裝印表機驅動程式

關於安裝印表機驅動程式

若想從網路印表機進行列印，您必須在電腦上安裝印表機驅動程式。本章節將會說明如何手動安裝印表機驅動程式。請參考本章中適合您作業系統的說明。

Windows 8/7/Vista/Server 2012/Server 2008

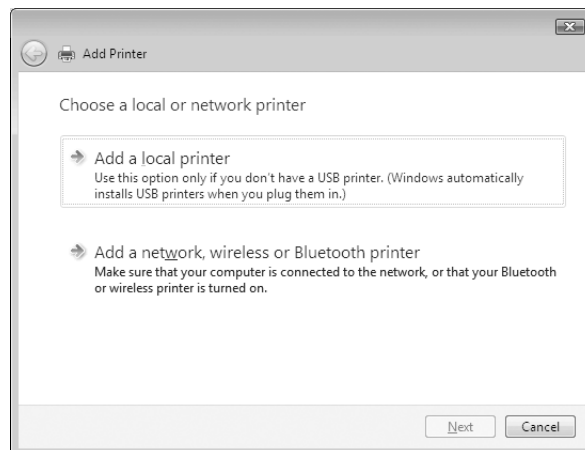
印表機驅動程式的安裝步驟會依您所使用的列印方式而不同。

TCP/IP 列印

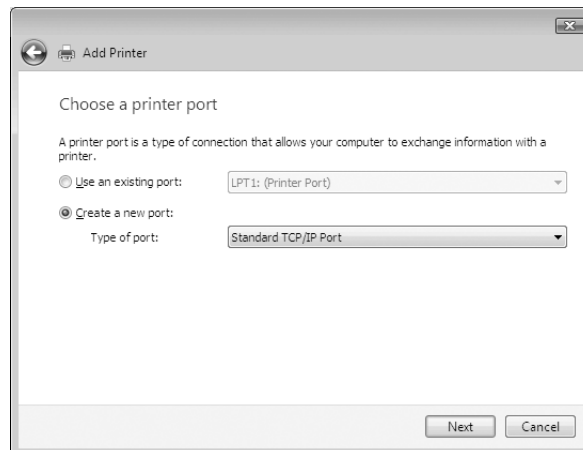
附註：

若您使用的是 EpsonNet Print，則安裝步驟將有所不同。詳細說明，請參考 第42頁 “關於 EpsonNet Print”。請注意，EpsonNet Print 不支援 IPv6 環境。

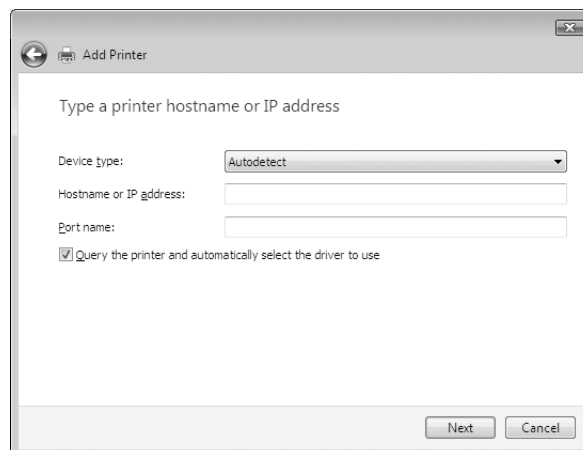
1. 開啓 [控制台]，然後點選 [檢視裝置和印表機] (Windows 8/7/Server 2012) 或 [印表機] (Windows Vista/Server 2008)。
2. 點選 [新增印表機] 以啓動 Add Printer Wizard (新增印表機精靈) 對話框。
3. 點選 [新增本機印表機]。



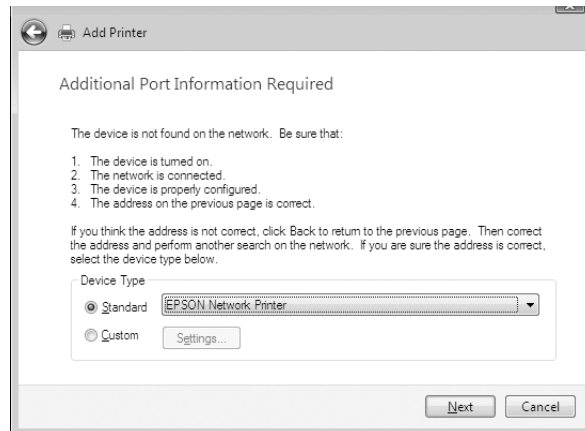
4. 選擇 [建立新的連接埠] 選項鈕，然後從清單選擇 [標準 TCP/IP 連接埠]。然後按下 [下一步] 鍵。



5. 輸入網路界面的 IP 位址，然後按下 [下一步] 鍵。



6. 如發生錯誤，將出現下列的對話框。請選擇 [標準] 選項鈕，然後選擇 [EPSON 網路印表機]。按下 [下一步] 鍵。



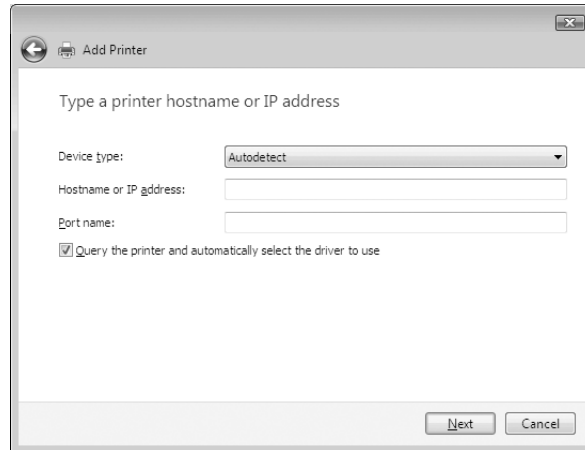
7. 按下 [完成] 鍵。
8. 請參考 第25頁 “安裝印表機驅動程式” 安裝印表機驅動程式。

網路列印 (IPP/IPPS)

1. 開啟 [控制台]，然後點選 [檢視裝置和印表機] (Windows 8/7/Server 2012) 或 [印表機] (Windows Vista/Server 2008)。
2. 點選 [新增印表機] 以啟動 Add Printer Wizard (新增印表機精靈) 對話框。
3. 點選 [新增網路、無線或 Bluetooth 印表機]。
4. 點選 [我想要的印表機不在清單上]。
5. 點選 [使用 TCP/IP 位址或主機名稱新增印表機] 選項鈕，然後按下 [下一步] 鍵。
6. 使用下列格式於 [主機名稱] 或 [IP位址] 欄位中輸入目標裝置的 URL。URL 應與您在 EpsonNet Config 的 IPP/IPPS 資訊頁中所設定的 URL 相同。

http://網路界面的 IP 位址:631/印表機名稱

範例：http://192.168.100.201:631/EPSON_IPP_Printer



附註：

若想檢查網路界面的 IP 位址，請使用 EpsonNet Config。詳細說明，請參考第36頁“關於 EpsonNet Config”。

7. 請依照螢幕上的操作說明以設定裝置。如有需要請參考第25頁“安裝印表機驅動程式”。
8. 若要使用 IPPS (Secure IPP 列印) 進行列印，您必須使用 EpsonNet Config with Web browser 將數位憑證匯入至印表機。詳細說明請參考第38頁“EpsonNet Config with Web Browser”。

安裝印表機驅動程式

1. 放入印表機內附的 Software Disc。
2. 若出現 Epson Install Navi 畫面，請予以關閉。
3. 在新增印表機畫面中，按下 [從磁片安裝] 鍵。會出現 Install From Disk (從磁片安裝) 對話框。
4. 按下 [瀏覽] 鍵。
5. 選擇 CD/DVD 光碟機，然後依據您的作業系統雙擊 [WINX64] 或 [WINX86] 資料夾。按下 [開啓] 鍵。
6. 按下 Install From Disk (從磁片安裝) 對話框中的 [確定] 鍵。

7. 選擇裝置的機型名稱，然後按下 [下一步] 鍵。

附註：

若 Add Printer Wizard (新增印表機精靈) 對話框提示您選擇 [保留現有的驅動程式] 或 [置換現有的驅動程式]，請確定選擇 [置換現有的驅動程式] 選項鈕。

8. 按下 [完成] 鍵，並依照螢幕上的操作說明完成安裝。

Windows XP

印表機驅動程式的安裝步驟會依您所使用的列印方式而不同。

TCP/IP 列印

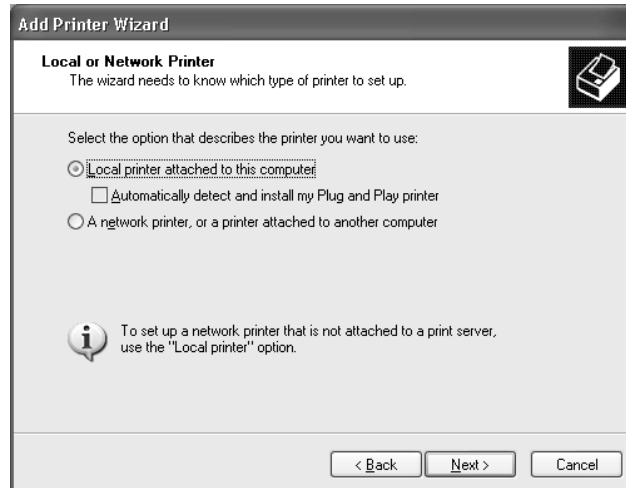
附註：

若您使用的是 EpsonNet Print，則安裝步驟將有所不同。詳細說明，請參考 第42頁 “關於 EpsonNet Print”。

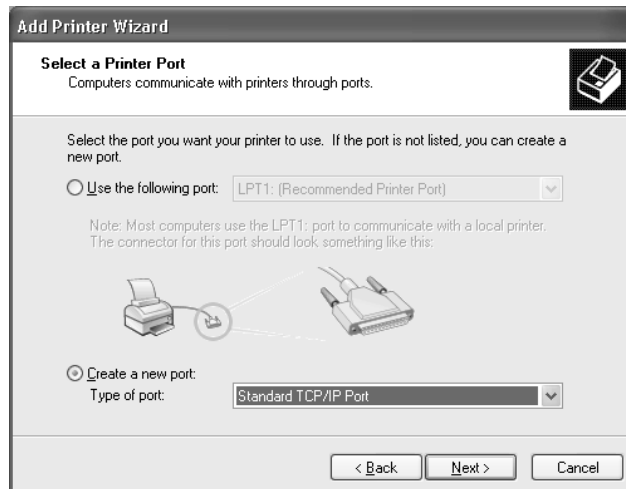
1. 按下 [開始] 鍵，點選 [控制台]，點選 [印表機和其他硬體]，然後點選 [印表機和傳真]。
2. 在 [印表機工作]，點選 [新增印表機] 以開啓 Add Printer Wizard (新增印表機精靈) 對話框，然後按下 [下一步] 鍵。
3. 點選 [連接到這台電腦的本機印表機]，取消點選 [自動偵測並安裝我的隨插即用印表機] 檢查盒，然後按下 [下一步] 鍵。

附註：

您必須取消點選 [自動偵測並安裝我的隨插即用印表機] 檢查盒，因為印表機是直接連接至網路上，而非與 Windows XP 電腦相連。



4. 選擇 [建立新的連接埠] 選項鈕，然後從清單選擇 [標準 TCP/IP 連接埠]。然後按下 [下一步] 鍵。



5. 輸入網路界面的 IP 位址，然後按下 [下一步] 鍵。



6. 如發生錯誤，將出現下列的對話框。請選擇 [標準] 選項鈕，然後選擇 [EPSON 網路印表機]。按下 [下一步] 鍵。



7. 按下 [完成] 鍵。
8. 請參考 第29頁 “安裝印表機驅動程式” 安裝印表機驅動程式。

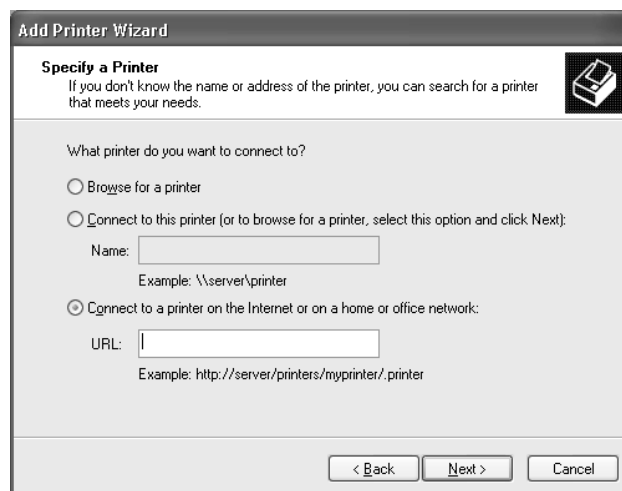
網路列印 (IPP/IPPS)

1. 按下 [開始] 鍵，點選 [控制台]，點選 [印表機和其他硬體]，然後點選 [印表機和傳真]。

2. 在 [印表機工作]，點選 [新增印表機] 以開啓 Add Printer Wizard (新增印表機精靈) 對話框，然後按下 [下一步] 鍵。
3. 點選 [網路印表機或連接到其他電腦的印表機]，然後按下 [下一步] 鍵。
4. 選擇 [連線到網際網路、家用或公司網路上的印表機] 選項鈕。
5. 請使用下列格式輸入目標印表機的 URL。URL 應與您在 EpsonNet Config 的 IPP/IPPS 資訊頁中所設定的 URL 相同。

http://印表機的 IP 位址:631/印表機名稱

範例：http://192.168.100.201:631/EPSON_IPP_Printer



附註：

若想檢查網路界面的 IP 位址，請使用 EpsonNet Config。詳細說明，請參考第36頁“關於 EpsonNet Config”。

6. 請依照螢幕上的操作說明以設定印表機。如有需要請參考第29頁“安裝印表機驅動程式”。
7. 若要使用 IPPS (Secure IPP 列印) 進行列印，您必須使用 EpsonNet Config with Web browser 將數位憑證匯入至印表機。詳細說明請參考第38頁“EpsonNet Config with Web Browser”。

安裝印表機驅動程式

1. 放入印表機內附的 Software Disc。

2. 若出現 Epson Install Navi 畫面，請予以關閉。
3. 在新增印表機畫面中，按下 [從磁片安裝] 鍵。會出現 Install From Disk (從磁片安裝) 對話框。
4. 按下 [瀏覽] 鍵。
5. 選擇 CD/DVD 光碟機，然後雙擊 [WINX64] 或 [WINX86] 資料夾。按下 [開啓] 鍵。
6. 按下 Install From Disk (從磁片安裝) 對話框中的 [確定] 鍵。
7. 選擇印表機的機型名稱，然後按下 [下一步] 鍵。

附註：

若 Add Printer Wizard (新增印表機精靈) 對話框提示您選擇 [保留現有的驅動程式] 或 [置換現有的驅動程式]，請確定選擇 [置換現有的驅動程式] 選項鈕。

8. 按下 [完成] 鍵，並依照螢幕上的操作說明完成安裝。

Windows Server 2003

印表機驅動程式的安裝步驟會依您所使用的列印方式而不同。

TCP/IP 列印

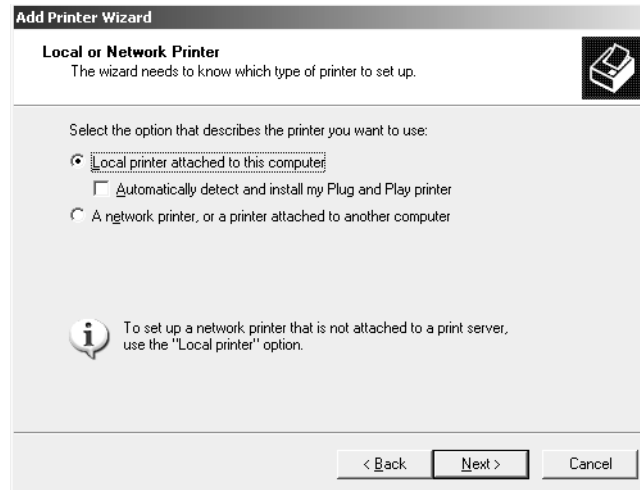
附註：

若您使用的是 EpsonNet Print，則安裝步驟將有所不同。詳細說明，請參考第42頁“關於 EpsonNet Print”。

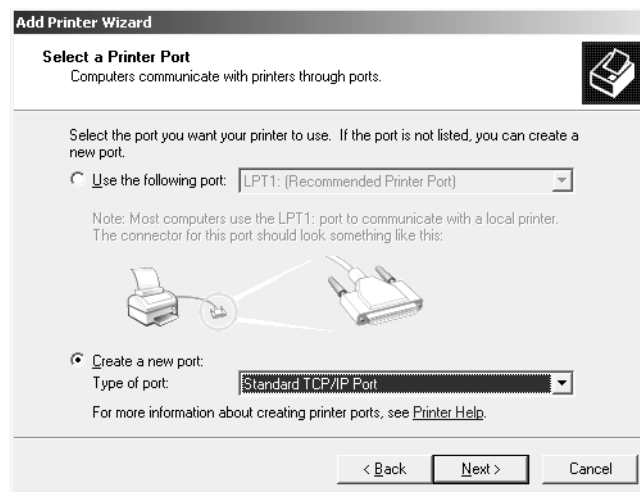
1. 按下 [開始] 鍵，然後選擇 [印表機和傳真]。
2. 雙擊 [新增印表機] 圖示以開啓 Add Printer Wizard (新增印表機精靈) 對話框，然後按下 [下一步] 鍵。
3. 點選 [連接到這台電腦的本機印表機]，取消點選 [自動偵測並安裝我的隨插即用印表機] 檢查盒，然後按下 [下一步] 鍵。

附註：

您必須取消點選 [自動偵測並安裝我的隨插即用印表機] 檢查盒，因為印表機是直接連接至網路上，而非與電腦相連。

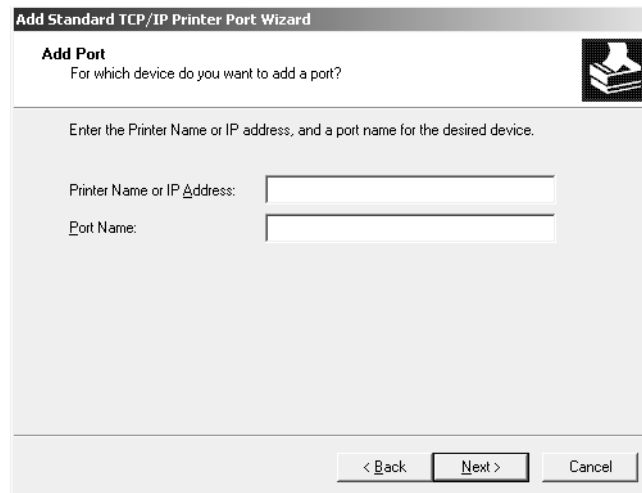


4. 選擇 [建立新的連接埠] 選項鈕，然後從清單選擇 [標準 TCP/IP 連接埠]。按下 [下一步] 鍵。

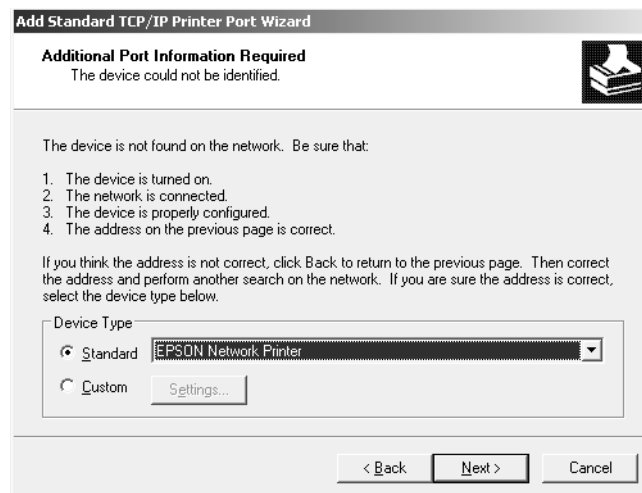


5. 在出現 Add Standard TCP/IP Printer Port Wizard (標準 TCP/IP 印表機連接埠新增精靈) 對話框時，按下 [下一步] 鍵。

6. 輸入網路界面的 IP 位址，然後按下 [下一步] 鍵。



7. 如發生錯誤，將出現下列的對話框。請選擇 [標準] 選項鈕，然後選擇 [EPSON 網路印表機]。按下 [下一步] 鍵。



8. 按下 [完成] 鍵。
9. 請參考 第33頁 “安裝印表機驅動程式” 安裝印表機驅動程式。

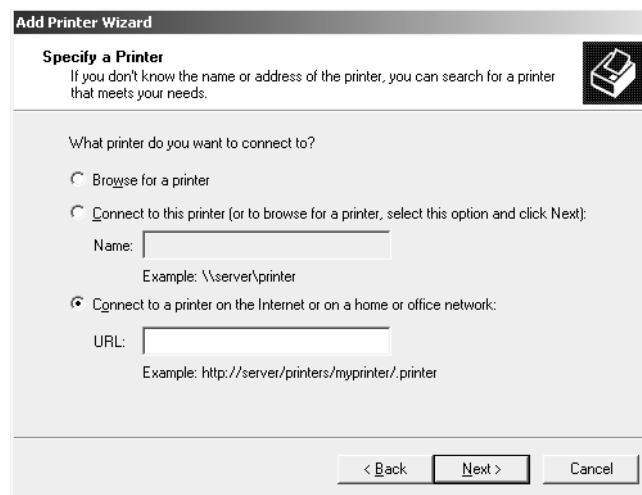
網路列印 (IPP/IPPS)

1. 按下 [開始] 鍵，然後選擇 [印表機和傳真]。

2. 雙擊 [新增印表機] 圖示以開啓 Add Printer Wizard (新增印表機精靈) 對話框，然後按下 [下一步] 鍵。
3. 點選 [網路印表機或連接到其他電腦的印表機]，然後按下 [下一步] 鍵。
4. 選擇 [連線到網際網路、家用或公司網路上的印表機] 選項鈕。
5. 請使用下列格式輸入目標印表機的 URL。URL 必須與您在 EpsonNet Config 的 IPP/IPPS 資訊頁中所設定的 URL 相同。

http://印表機的 IP 位址:631/印表機名稱

範例：http://192.168.100.201:631/EPSON_IPP_Printer



附註：

若想檢查網路界面的 IP 位址，請使用 EpsonNet Config。詳細說明，請參考 第36頁 “關於 EpsonNet Config”。

6. 請依照螢幕上的操作說明以設定印表機。如有需要請參考 第33頁 “安裝印表機驅動程式”。
7. 若要使用 IPPS (Secure IPP 列印) 進行列印，您必須使用 EpsonNet Config with Web browser 將數位憑證匯入至印表機。詳細說明請參考 第38頁 “EpsonNet Config with Web Browser”。

安裝印表機驅動程式

1. 放入印表機內附的 Software Disc。

2. 若出現 Epson Install Navi 畫面，請予以關閉。
3. 在新增印表機畫面中，按下 [從磁片安裝] 鍵。會出現 Install From Disk (從磁片安裝) 對話框。
4. 按下 [瀏覽] 鍵。
5. 選擇 CD/DVD 光碟機，然後雙擊 [WINX64] 或 [WINX86] 資料夾。按下 [開啓] 鍵。
6. 按下 Install From Disk (從磁片安裝) 對話框中的 [確定] 鍵。
7. 選擇印表機的機型名稱，然後按下 [下一步] 鍵。

附註：

若 Add Printer Wizard (新增印表機精靈) 對話框提示您選擇 [保留現有的驅動程式] 或 [置換現有的驅動程式]，請確定選擇 [置換現有的驅動程式] 選項鈕。

8. 按下 [完成] 鍵，然後依照螢幕上的操作說明完成安裝。

Macintosh

請執行下列步驟以設定印表機。

附註：

在執行下列步驟之前，請確認您的 Macintosh 上已安裝印表機驅動程式。請參考印表機內附之使用手冊，瞭解如何安裝印表機驅動程式的操作說明。

Mac OS X 10.5 或以上版本

Bonjour 列印

1. 開啓 [系統偏好設定]。
2. 開啓 [列印與傳真]。
3. 按下 [+] 鍵以新增印表機。
4. 選擇想要與 Bonjour 相連的印表機機型。
5. 按下 [新增] 鍵。

TCP/IP 列印

1. 開啓 [系統偏好設定]。
2. 開啓 [列印與傳真]。
3. 按下 [+] 鍵以新增印表機。
4. 按下 [IP] 鍵。
5. 從下拉式清單中選擇所需的列印通訊協定。
6. 輸入印表機的主機名稱或 IP 位址。
7. 選擇想要的印表機型號。
8. 按下 [新增] 鍵。

第 3 章

網路軟體

本章說明如何使用印表機所提供的網路軟體。

附註：
所提供的軟體依您的印表機機型而有不同。

EpsonNet Config for Windows

關於 EpsonNet Config

EpsonNet Config 是 Windows 界面的設定軟體，供管理員用於設定 TCP/IP 的網路界面。

附註：
請務必使用本產品內附 Software Disc 中的 EpsonNet Config。

系統需求

下表列出 EpsonNet Config 的系統需求。

作業系統	Windows 8 Windows 7 Windows Vista Windows XP Professional/Home Edition Windows Server 2012 Windows Server 2008/Windows Server 2008 R2 Windows Server 2003/Windows Server 2003 R2
硬碟空間	30 MB

安裝 EpsonNet Config

您可使用印表機隨附的 Software Disc，在您的電腦上安裝 EpsonNet Config。在 CD/DVD 光碟機中放入 Software Disc，選擇 軟體選擇 畫面中的 [EpsonNet Config]。

附註：

- ❑ 以管理員帳號登入作業系統，安裝 EpsonNet Config。
- ❑ 若您在安裝 EpsonNet Config 後，從作業系統中新增或刪除通訊協定，則 EpsonNet Config 可能無法正確運作。若發生這樣的情況，請移除 EpsonNet Config 然後重新安裝。
- ❑ 若在啟動 EpsonNet Config 後出現 Windows Security Alert (Windows 安全性警示) 視窗，請按下 [允許存取] 鍵或 [解除封鎖] 鍵，否則 EpsonNet Config 畫面上將不會列出裝置。

開啓 EpsonNet Config 進階使用說明

EpsonNet Config 進階使用說明中含有關於 EpsonNet Config 的詳細資訊。請依照下列步驟開啓 EpsonNet Config 進階使用說明。

1. 按下 [開始] 鍵，指向 [所有程式]，選擇 [EpsonNet]，然後選擇 [EpsonNet Config V4]。
2. 點選 [EpsonNet Config 進階使用說明]。

出現 EpsonNet Config User's Guide (EpsonNet Config 進階使用說明)。按下首頁或內容頁的連結後，便可得到使用 EpsonNet Config 的資訊。

EpsonNet Config for Macintosh

關於 EpsonNet Config

EpsonNet Config for Macintosh 是 Macintosh 界面的設定軟體，供管理員用於設定 TCP/IP 的網路界面。

附註：

請務必使用本產品內附 Software Disc 中的 EpsonNet Config。

系統需求

下表列出 EpsonNet Config 的系統需求。

作業系統	Mac OS 10.4 或以上版本
硬碟空間	30 MB

安裝 EpsonNet Config

您可使用印表機隨附的 Software Disc，在您的電腦上安裝 EpsonNet Config。在 CD/DVD 光碟機中放入 Software Disc，選擇軟體選擇畫面中的 [EpsonNet Config]。

開啓 EpsonNet Config 進階使用說明

EpsonNet Config 進階使用說明中含有關於 EpsonNet Config 的詳細資訊。請依照下列步驟開啓 EpsonNet Config 進階使用說明。

1. 啓動 Finder。
2. 在 [應用程式] 資料夾中，雙擊 [EpsonNet] 資料夾，然後雙擊 [EpsonNet Config V4] 資料夾。最後雙擊 [EpsonNet Config] 圖示。

啓動 EpsonNet Config。

3. 從 Help (說明) 功能表中選擇 [EpsonNet Config 說明]。

出現 EpsonNet Config User's Guide (EpsonNet Config 進階使用說明)。按下首頁或內容頁的連結後，便可得到使用 EpsonNet Config 的資訊。

EpsonNet Config with Web Browser

關於 EpsonNet Config

EpsonNet Config with Web Browser 是一種 Web 式的工具程式，專為設定網路上使用的印表機而設計。

藉由在瀏覽器的 URL 中輸入網路界面的 IP 位址，您即可啟動 EpsonNet Config，以設定 TCP/IP、NetWare、MS Network、IPP 及 SNMP 的網路界面。

支援的網頁瀏覽器

- ☐ Microsoft Internet Explorer 6.0 或以上版本
- ☐ Apple Safari 3 或以上版本
- ☐ Mozilla Firefox 3.6 或以上版本

使用 EpsonNet Config with Web Browser 設定網路界面

在您使用 EpsonNet Setup、EpsonNet Config for Windows 或 Macintosh，或 arp/ping 指令對網路界面指定 IP 位址之後，您即可使用 EpsonNet Config with Web Browser 設定網路界面。

附註：

- ☐ 您的電腦上必須安裝網頁瀏覽器。
- ☐ 必須為電腦及網路界面設定正確的 TCP/IP。
- ☐ 請勿同時執行 EpsonNet Config for Windows 或 Macintosh 及 EpsonNet Config with Web Browser。
- ☐ 瀏覽器可能會限制某些您可使用的字元。若想瞭解詳情，請參考瀏覽器或作業系統說明文件。

下列程序顯示在 TCP/IP IPv4 網路上設定網路界面的範例。

1. 開啓印表機的電源。
2. 使用下列方式執行 EpsonNet Config。
 - ☐ 執行 EpsonNet Config for Windows 或 Macintosh。從清單中選擇欲設定的印表機，然後點選 [啟動瀏覽器]。
 - ☐ 開啓瀏覽器，然後直接輸入網路界面的 IP 位址。請勿執行 EpsonNet Config for Windows 或 Macintosh。

https://網路界面的 IP 位址/

範例：[https://192.168.100.201/]

附註：

❑ 若想檢查網路界面的 IP 位址，請使用 EpsonNet Config。Windows 使用者請參考第36頁“關於 EpsonNet Config”，而 Macintosh 使用者請參考第37頁“關於 EpsonNet Config”，以瞭解詳情。

❑ 若出現 Windows 安全性警示畫面，請按下 [繼續] 鍵啟動 EpsonNet Config with Web Browser。

3. 點選 Configuration (組態) 功能表下 Network (網路) 中的 [TCP/IP]，然後按下 [IPv4 位址] 以顯示 TCP/IP IPv4 設定畫面。

附註：

若您想設定 TCP/IP 以外的通訊協定，請在 Configuration - Network (組態 - 網路) 畫面中設定所需的設定值。

4. 選擇取得 IP 位址的方法。當您選擇 [自動]，則會提供 DHCP 並自動指定 IP 位址。若您希望由手動設定 IP 位址，請選擇 [手動]。

附註：

❑ 網路系統管理員必須檢查對 IP 位址設定的所有變更。

❑ 在選擇 [自動] 時，可提供 DHCP。若使用 DHCP 伺服器，請確定已在您的電腦上安裝並已正確設定 DHCP 伺服器。請參考您作業系統的線上說明，以瞭解詳細使用說明。

❑ 若啓用 [設定時使用自動私人 IP 位址 (APIPA)]，即使您的系統管理員或網路上沒有任何 DHCP 伺服器，亦會自動對網路界面指定私人 IP 位址。

❑ 如不支援 DNS 功能，我們建議您選擇 [手動]，然後輸入 IP 位址。這是因為若您選擇 [自動]，網路界面的 IP 位址會在您每次開啓印表機時進行變更，因此您必須個別變更印表機連接埠。

5. 若想手動指定 IP 位址，請輸入 IP 位址、子網路遮罩及預設閘道。請確定 IP 位址不會與網路上的其他任何裝置相衝突。

附註：

若有伺服器或路由器可作為閘道，請輸入伺服器或路由器的 IP 位址作為閘道位址。若無閘道，請在此保留預設值。

6. 若想在無法由 DHCP 伺服器取得 IP 位址時，自動取得 169.254.1.1 至 169.254.254.254 之間的私人位址，請將 [設定時使用自動私人 IP 位址 (APIPA)] 的設定保留為 [啓用]；否則請選擇 [停用]。

7. 在使用 PING 指令設定 IP 位址時，將 [使用 PING 設定] 選擇 [啓用]。在以 EpsonNet Config 設定 IP 位址時，選擇 [停用] 可防止 IP 位址的任何非預期變更。

8. 若您想使用 DHCP 伺服器取得 DNS 伺服器位址，請將 [自動取得 DNS 伺服器位址] 選擇 [啓用]。

若您想手動輸入 DNS 伺服器位址，請選擇 [停用]，然後輸入 DNS 伺服器的 IP 位址。

9. 若您想使用 DHCP 伺服器取得主機名稱及網域名稱，請將 [自動取得主機名稱及網域名稱] 選擇 [啓用]。

若您想手動指定，請在文字欄中輸入主機名稱及網域名稱。

10. 若想透過支援 Dynamic DNS 的 DHCP 伺服器登錄主機名稱及網域名稱，請將 [將網路介面位址登錄至 DNS 伺服器] 選擇 [啓用]。

若您想對 DNS 伺服器直接登錄主機名稱及網域名稱，請將 [將網路介面位址直接登錄至 DNS 伺服器] 選擇 [啓用]。

11. 只適用於 Mac OS X：

將 [使用 Bonjour] 選擇 [啓用] 或 [停用]。若您選擇 [啓用]，請輸入 Bonjour Name (Bonjour 名稱) 及 Bonjour Printer Name (Bonjour 印表機名稱)。

12. 請勿關閉網頁瀏覽器並且請勿在此訊息出現後傳送列印工作至印表機。請依照螢幕上的操作指示重設印表機。

附註：

☐ 由於新 IP 位址在印表機重置後即可使用，您必須在輸入新的 IP 位址後重新啓動 EpsonNet Config。

☐ 只有在您按下 [傳送] 鍵時，頁面的變更才會生效。

開啓畫面

任何使用者皆可在瀏覽器的網址中輸入網路界面的 IP 位址，以存取開啓的畫面。

附註：

☐ 上述項目僅出現於印表機支援該功能時，項目的名稱可能會依機型而有不同。

☐ 請參考 EpsonNet Config with Web Browser 的說明，以取得各個項目的詳細資訊。

EpsonNet Print

關於 EpsonNet Print

EpsonNet Print 是一種在 TCP/IP 網路上提供 Epson 印表機點對點列印的工具程式。

使用 EpsonNet Print，您可尋找到位在相同區段上或路由器外的印表機。您可選擇 LPR standard printing、LPR extension printing、或 High-speed printing。

附註：

EpsonNet Print 不支援 IPv6 環境。

系統需求

下列表格列出 EpsonNet Print 的系統需求。

作業系統	Windows 8 Windows 7 Windows Vista (含 Service Pack 2 或以上版本) Windows XP Home Edition/Professional (含 Service Pack 3 或以上版本) Windows Server 2012 Windows Server 2008 (含 Service Pack 2 或以上版本) Windows Server 2008 R2 Windows Server 2003 (含 Service Pack 2 或以上版本)
------	--

安裝 EpsonNet Print

您可使用印表機隨附的 Software Disc，在您的電腦上安裝 EpsonNet Print。在 CD/DVD 光碟機中放入 Software Disc，選擇 軟體選擇 畫面中的 [EpsonNet Print]。

Windows 8/7/Vista/XP/Server 2012/Server 2008/Server 2003 使用者

請依下列步驟使用 新增印表機精靈 對話框來新增連接埠。

- ❑ 若您想為從 DHCP 伺服器或路由器自動取得其 IP 位址的印表機新增一個連接埠，請參考第43頁 “以指定動態 IP 位址的方式，新增印表機連接埠”。
- ❑ 若您想為手動指定其 IP 位址的印表機新增一個連接埠，請參考 第46頁 “以指定靜態 IP 位址的方式，新增印表機連接埠”。

附註：

- ❑ 請確定已正確設定與網路及 TCP/IP 相連的電腦。
- ❑ 必須為印表機指定一個有效的 IP 位址。

以指定動態 IP 位址的方式，新增印表機連接埠

1. 在 Windows 8/7/Vista/Server 2012/Server 2008：開啓 [控制台]，然後點選 [檢視裝置和印表機] (Windows 8/7/Server 2012) 或 [印表機] (Windows Vista/Server 2008)。點選 [新增印表機] 以啓動 新增印表機精靈 對話框。

在 Windows XP：按下 [開始] 鍵，然後選擇 [印表機和傳真]。在印表機工作下，點選 [新增印表機] 以啓動 新增印表機精靈 對話框。按下 [下一步] 鍵。

在 Windows Server 2003：按下 [開始] 鍵，然後選擇 [印表機和傳真]。雙擊 印表機 資料夾內的 [新增印表機] 圖示，啓動 新增印表機精靈。按下 [下一步] 鍵。

2. 在 Windows 8/7/Vista/Server 2012/Server 2008：點選 [新增本機印表機]。選擇 [建立新的連接埠] 選項鈕，然後從清單選擇 [EpsonNet Print 連接埠]。按下 [下一步] 鍵。

附註：

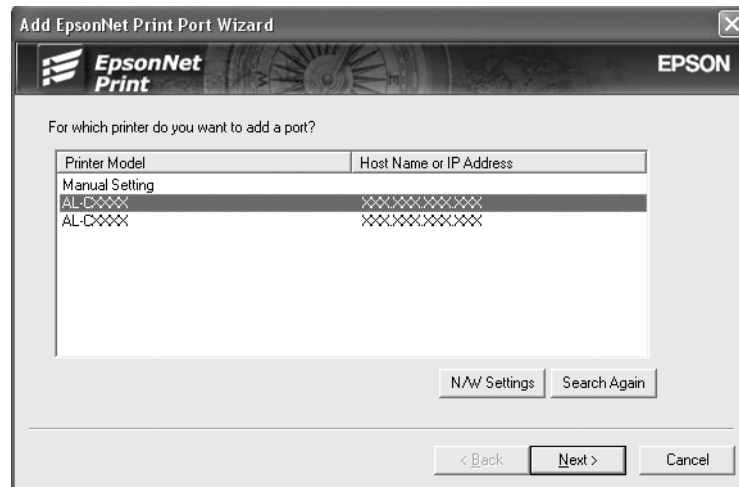
若出現 Windows 安全性警示 畫面，請按下 [允許存取] 或 [解除封鎖] 鍵，然後按下 [重新搜尋] 鍵，以搜尋印表機。

在 Windows XP/Server 2003：點選 [連接到這台電腦的本機印表機]，取消點選 [自動偵測並安裝我的隨插即用印表機] 檢查盒，然後按 [下一步] 鍵。選擇 [建立新的連接埠] 選項鈕，然後從清單選擇 [EpsonNet Print 連接埠]。按下 [下一步] 鍵。

附註：

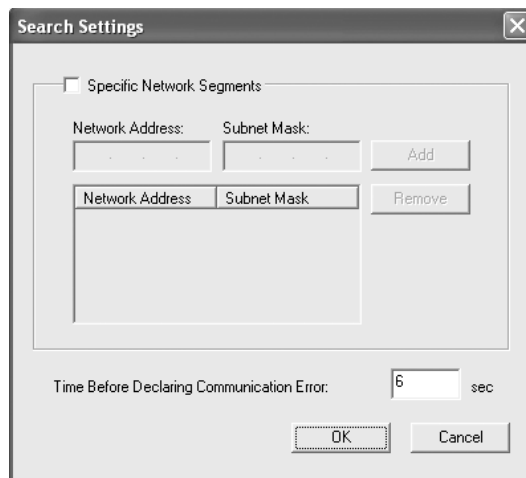
若出現 Windows 安全性警示 畫面，請按下 [解除封鎖] 鍵，然後按下 [重新搜尋] 鍵，以搜尋印表機。

3. 選擇目標印表機，然後按下 [下一步] 鍵。

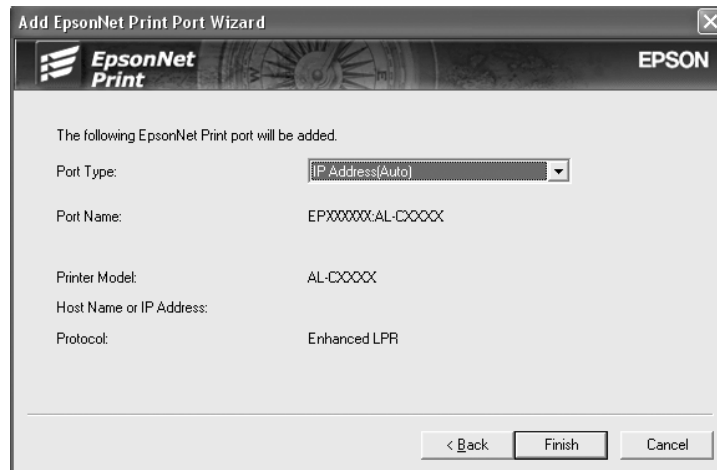


附註：

- ❑ 若目標印表機不在清單上，請按下 [重新搜尋] 鍵，使用新參數搜尋印表機。
- ❑ 按一下欄的標頭，即可以遞增或遞減順序排列每一欄的順序。但不論排序的方式為何，[手動設定] 會永遠顯示在清單的最上方。
- ❑ 若您想搜尋其他區段中的印表機，請按下 [網路設定] 鍵。點選 [特定網路區段] 檢查盒，然後輸入欲搜尋的網路區段的網路位址及子網路遮罩。然後按下 [新增] 鍵。您也可指定宣告傳輸錯誤之前的時間。



4. 確認您想設定的印表機連接埠資訊，然後按下 [完成] 鍵。



項目	說明
Port Type	<p>在下拉式功能表中會列出下列項目，您可選擇您所需要的連接埠類型。</p> <p>[IP Address (Auto)：]自動設定連接埠。若為自動取得印表機的 IP 位址，且電腦和印表機在同一區段中，您可選擇此連接埠類型。</p> <p>[IP Address (Manual)：]使用印表機的 IP 位址作為連接埠名稱。</p> <p>[HostName (DNS)：]使用印表機在 DNS 伺服器所登錄的主機名稱作為連接埠名稱。</p> <p>[MS Network：]使用印表機中所登錄的 NetBIOS 名稱作為連接埠名稱。</p>
The port Information	<p>顯示下列項目：</p> <ul style="list-style-type: none"> - Port Name (若連接埠類型變更，則連接埠名稱及主機名稱或 IP 位址也會變更。) - Printer Model - Host Name or IP Address - Protocol
Finish button	將連接埠資訊登錄至系統中，並關閉 新增 EpsonNet Print 連接埠精靈。
Back button	回到印表機清單視窗。
Cancel button	關閉 新增 EpsonNet Print 連接埠精靈。

您的電腦上已建立新的印表機連接埠。如要安裝印表機驅動程式，請參考 第48頁 “安裝印表機驅動程式”。

以指定靜態 IP 位址的方式，新增印表機連接埠

1. 在 Windows 8/7/Vista/Server 2012/Server 2008：開啓 [控制台]，然後點選 [檢視裝置和印表機] (Windows 8/7/Server 2012) 或 [印表機] (Windows Vista/Server 2008)。點選 [新增印表機] 以啓動 新增印表機精靈 對話框。

在 Windows XP：按下 [開始] 鍵，然後選擇 [印表機和傳真]。在印表機工作下，點選 [新增印表機] 以啓動 新增印表機精靈 對話框。按下 [下一步] 鍵。

在 Windows Server 2003：按下 [開始] 鍵，然後選擇 [印表機和傳真]。雙擊 印表機 資料夾內的 [新增印表機] 圖示，啓動 新增印表機精靈。按下 [下一步] 鍵。

2. 在 Windows 8/7/Vista/Server 2012/Server 2008：點選 [新增本機印表機]。選擇 [建立新的連接埠] 選項鈕，然後從清單選擇 [EpsonNet Print 連接埠]。按下 [下一步] 鍵。

附註：

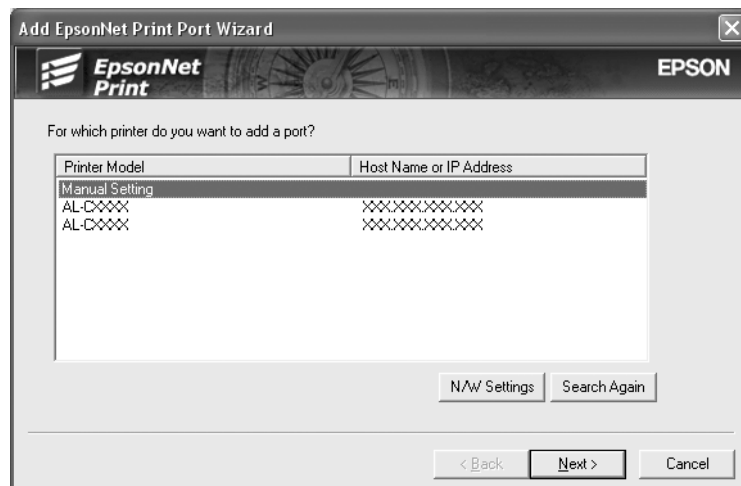
若出現 Windows 安全性警示 畫面，請按下 [允許存取] 或 [解除封鎖] 鍵，然後按下 [重新搜尋] 鍵，以搜尋印表機。

在 Windows XP/Server 2003：點選 [連接到這台電腦的本機印表機]，取消點選 [自動偵測並安裝我的隨插即用印表機] 檢查盒，然後按 [下一步] 鍵。選擇 [建立新的連接埠] 選項鈕，然後從清單選擇 [EpsonNet Print 連接埠]。按下 [下一步] 鍵。

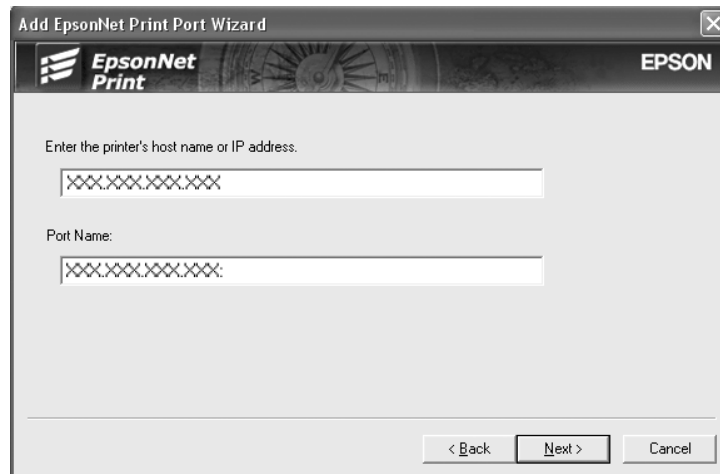
附註：

若出現 Windows 安全性警示 畫面，請按下 [解除封鎖] 鍵，然後按下 [重新搜尋] 鍵，以搜尋印表機。

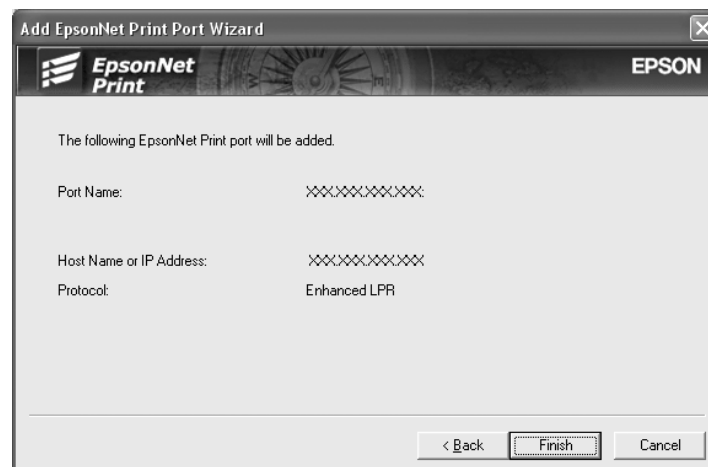
3. 從清單中選擇 [手動設定]，然後按下 [下一步] 鍵。



4. 輸入印表機名稱，連接埠名稱會自動輸入至 連接埠名稱 欄位中。然後按下 [下一步] 鍵。



5. 確認您想設定的印表機連接埠資訊，然後按下 [完成] 鍵。



項目	說明
The port Information	顯示下列項目： <ul style="list-style-type: none"> - Port Name - Host Name or IP Address - Protocol
Finish button	將連接埠資訊登錄至系統中，並關閉 新增 EpsonNet Print 連接埠精靈。
Back button	回到印表機清單視窗。
Cancel button	關閉 新增 EpsonNet Print 連接埠精靈。

您的電腦上已建立新的印表機連接埠。如要安裝印表機驅動程式，請參考 第48頁 “安裝印表機驅動程式”。

安裝印表機驅動程式

安裝印表機所附的印表機驅動程式。

附註：

以上步驟中的某些按鍵可能因作業系統不同而有些微差異。

1. 放入印表機內附的 Software Disc。
2. 若出現 Epson Install Navi 畫面，請予以關閉。
3. 在新增印表機畫面中，按下 [從磁片安裝] 鍵。會出現 從磁片安裝 對話框。
4. 按下 [瀏覽] 鍵。
5. 選擇 CD/DVD 光碟機，然後雙擊適合您作業系統的資料夾。按下 [確定] 鍵。
6. 按下 從磁碟安裝 對話框中的 [確定] 鍵。
7. 選擇印表機的機型名稱，然後按下 [下一步] 鍵。

附註：

若 新增印表機精靈 對話框提示您選擇 [保留現有的驅動程式] 或 [置換現有的驅動程式]，請確定選擇 [置換現有的驅動程式] 選項鈕。按下 [下一步] 鍵。

8. 按下 [完成] 鍵，並依照螢幕上的操作說明完成安裝。

現在印表機已可準備進行點對點列印。若想設定印表機連接埠，請參考 第48頁 “設定印表機連接埠”。

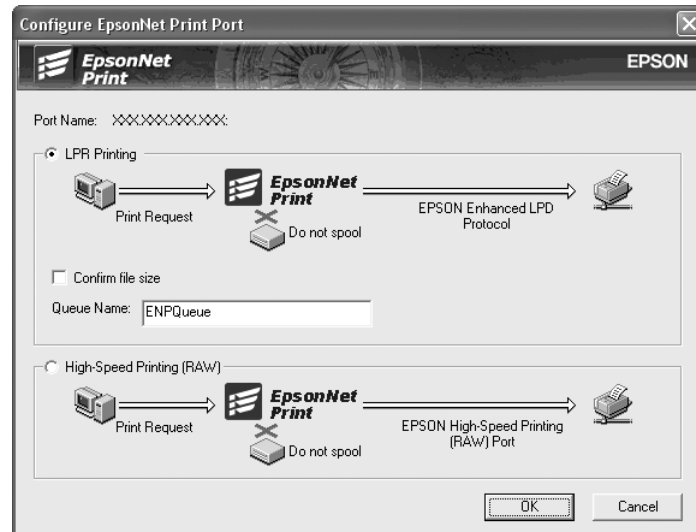
設定印表機連接埠

請依下列步驟設定印表機連接埠。列印速度會依您的選擇而有不同。

1. Windows 8/7/Vista/Server 2012/Server 2008：
開啓 [控制台]，然後點選 [檢視裝置和印表機] (Windows 8/7/Server 2012) 或 [印表機] (Windows Vista/Server 2008)。

在 Windows XP/Server 2003：
按下 [開始] 鍵，然後選擇 [印表機和傳真]。

2. 在目標印表機上按右鍵，然後點選 [內容]。
3. 點選 [連接埠] 標籤，然後按下 [設定連接埠] 鍵。
4. 為想要的連接埠進行適當的設定。



LPR enhanced printing：

選擇 [LPR Printing] 選項鈕，然後指定佇列名稱 (最多 32 個字元)。LPR enhanced printing 會將列印工作傳送至目標網路印表機，而不會暫存所有的列印資料。LPR enhanced printing 較 LPR standard printing 快速。

LPR standard printing：

選擇 [Confirm file size] 選項鈕，然後指定佇列名稱 (最多 32 個字元)。在傳送至目標網路印表機之前，會由電腦暫存列印資料。

附註：

當列印資料大小為 20 MB 或更大時，我們建議您使用 LPR enhanced printing。

High-speed printing：

選擇 [High-Speed Printing (RAW)] 選項鈕。Epson High-Speed printing 會將列印工作傳送至目標網路印表機，而不會暫存所有的列印資料。High-Speed printing 較其他兩種列印方法更為快速。

5. 按下 [確定] 鍵。

若印表機不支援 High-Speed printing，而您卻選擇 [High-Speed Printing (RAW)] 選項鈕，或您無法與印表機連線時，便會出現錯誤訊息。請依照訊息修正相關問題。

第 4 章

解決問題的方法

一般問題

無法設定網路界面或無法由網路進行列印

原因	如何解決
印表機或網路設定可能錯誤。	首先，請檢查您是否可依照 第53頁 “列印網路狀態表” 中所說明的方式列印狀態表。若您可列印狀態表，請檢查網路設定；否則，請將印表機控制面板的界面模式設定為 [Auto] 或 [Option]。

即使您已為電腦及印表機指定 IP 位址，仍無法列印

原因	如何解決
您以手動方式為電腦指定 IP 位址，但使用 Automatic Private IP Addressing (APIPA) 為印表機指定 IP 位址。	請為印表機指定與電腦屬於相同區段的 IP 位址。請使用 EpsonNet Config 及印表機的控制面板。

無法啟動 EpsonNet Config

原因	如何解決
您於安裝 EpsonNet Config 之後，新增或刪除通訊協定。	移除 EpsonNet Config，然後重新安裝。請參考 第37頁 “安裝 EpsonNet Config”。

啟動 EpsonNet Config 時，畫面上顯示 EpsonNet Config cannot be used because no network is installed 的訊息

原因	如何解決
電腦上未安裝 TCP/IP 及 IPX/SPX。	請安裝 TCP/IP 或 IPX/SPX 通訊協定。

原因	如何解決
TCP/IP 已安裝於電腦上，但未正確設定其 IP 位址。	請為電腦設定正確的 IP 位址。

傳送設定至網路界面時，畫面上顯示 Could not complete communicating configuration data 的訊息

原因	如何解決
在使用撥接路由器時可能會發生這種情況。	<p>從安裝 EpsonNet Config 的電腦執行 Command Prompt，然後輸入下列指令：</p> <p>格式：>ROUTE_ADD_網路界面的 IP 位址_電腦的 IP 位址 (底線表示一個空白)</p> <p>範例：>ROUTE ADD 192.168.192.168 22.33.44.55。</p>

無法開啓 EpsonNet Config with Web Browser

原因	如何解決
您尚未為網路界面設定 IP 位址。	請使用 Windows 或 Macintosh 版的 EpsonNet Config，以及印表機的控制面板，為網路界面設定 IP 位址。您可以在狀態表中檢查 IP 位址。請參考 EpsonNet Config 進階使用說明。

在 EpsonNet Config 對話框中未出現機型名稱及 IP 位址

原因	如何解決
若未設定有效的 IP 位址，可能不會出現上述對話框中所顯示的項目。	<p>設定有效的 IP 位址。</p> <p>從 View (檢視) 功能表中選擇 [重新整理]，以重新整理狀態。</p> <p>增加逾時前的時間長度。欲完成此項設定，請從 Tool (工具) 功能表中選擇 [選項]，然後選擇 [逾時]。請注意，此項設定可能導致 EpsonNet Config 執行較慢。</p>

列印網路狀態表

在您開始設定網路界面之前，請先列印包含重要資訊的網路狀態表，例如目前設定及網路界面的 MAC 位址。

若想列印網路狀態表，請依下列步驟進行操作。

附註：

若您的印表機沒有液晶面板，則無法使用下列步驟列印狀態表。請參考進階使用說明，以瞭解如何列印狀態表。

1. 按一下印表機控制面板上的 [向右] 鍵，以進入 SelecType 模式。液晶面板會顯示 Information Menu（資訊功能表）。
2. 按下 [向右] 鍵。
3. 按下 [向下] 鍵，直到液晶面板上出現 Network Status Sheet 為止。
4. 最後按下 [向右] 鍵，以列印網路狀態表。

附註：

- ❑ 您無法於下列情況列印狀態表：印表機已開始列印、離線，或尚未準備好可列印時。
- ❑ 請參考進階使用說明，以獲得更多關於印表機控制面板的資訊。

第 5 章

系統管理員的提示

使用印表機控制面板設定 IP 位址

在將印表機連接至網路上之後，您必須為網路界面設定 IP 位址。

若想從控制面板設定 IP 位址、子網路遮罩及預設閘道，請依下列步驟操作。

附註：

若您是使用無液晶面板的印表機機型，則無法使用下列步驟。

1. 開啓印表機的電源。
2. 按一下印表機控制面板上的 [向右] 鍵，以進入 SelecType 模式。液晶面板會顯示 Information Menu (資訊功能表)。
3. 按下 [向上] 或 [向下] 鍵，直到出現 Network Menu 為止。然後按下 [向右] 鍵。
4. 檢查是否出現 Network I/F = On。

若出現的是 Network I/F = Off，按下 [向右] 鍵，然後 [向上] 或 [向下] 鍵，變更爲 Network I/F = On。按兩下 [向右] 鍵、[向左] 鍵，然後按下 [向上] 或 [向下] 鍵選擇是 (未列印的資料被刪除)。然後按下 [向右] 鍵重新啓動印表機。

5. 按下 [向上] 或 [向下] 鍵，直到出現 Get IP Address = Auto (取得 IP 位址=自動) 為止。按下 [向右] 鍵，然後 [向上] 或 [向下] 鍵，以變更爲 Get IP Address = Panel (取得 IP 位址=面板)。然後按下 [向右] 鍵。您可使用下列方法取得 IP 位址。
 - ❑ 在使用印表機的控制面板設定 IP 位址、子網路遮罩及預設閘道時，請選擇 Panel (面板)。
 - ❑ 在從 DHCP 伺服器取得 IP 位址時，選擇 Auto (自動)。每當重設印表機或開啓印表機時，就會從 DHCP 伺服器自動取得 IP 位址。
 - ❑ 在使用 arp/ping 命令設定 IP 位址時，選擇 PING。網路界面會使用 arp/ping 命令所設定的 IP 位址。在重設印表機或關閉印表機然後重新開啓時，就會出現設定值。

附註：

❑ 若使用 [自動]，網路上必須有正確設定的 DHCP 伺服器。請參考您作業系統的線上說明，以瞭解詳細的操作說明。

❑ 只有在使用 arp/ping 命令設定 IP 位址時，選擇 [PING]。

6. 按下 [向上] 或 [向下] 鍵選擇 IP = xxx.xxx.xxx.xxx。按下 [向右] 鍵。

7. 按下 [向上] 或 [向下] 鍵，直到出現想要的數值為止。然後按下 [向右] 鍵設定數值。

附註：

重複步驟 6 和 7，以設定 IP 位址、子網路遮罩及預設閘道。

8. 按兩下 [向左] 鍵以離開控制面板功能表。即顯示 是否要重新啟動以套用設定？ 畫面。

9. 按下 [向上] 或 [向下] 鍵選擇 是（未列印的資料被刪除）。然後按下 [向右] 鍵重新啟動印表機。務必等待至液晶面板顯示 就緒 為止。

列印網路狀態表，以確認新的 IP 位址。

附註：

❑ 在使用 EpsonNet Config with Web Browser 之前，您必須先設定 IP 位址。

❑ 請參考進階使用說明，以獲得更多關於印表機控制面板設定值的資訊。

Network Menu

這些項目可用於在印表機的控制面板上進行網路設定。

項目	設定
Network I/F	On, Off
Get IPAddress	Panel, Auto, PING
IP	0.0.0.1 to 255.255.255.254
SM	0.0.0.0 to 255.255.255.255
GW	0.0.0.0 to 255.255.255.255
MS Network	On, Off
WSD	On, Off

項目	設定
LLTD	On, Off
Bonjour	On, Off
IPv6	On, Off
IPsec	On, Off
Pre-Shared Key	輸入預先共鑰金鑰 (20 個字元以內)。
IEEE802.1X	On, Off
Link Speed	Auto, 100 Full, 100 Half, 10 Full, 10 Half
Buffer Size	Normal, Maximum, Minimum

附註：

- ☐ 為啟動 Network Menu (網路功能表) 設定，您必須先關閉印表機五秒鐘以上，然後再將它重新開啓。或者您也可以如進階使用說明中的 Reset Menu (重置功能表) 說明，執行全部重置。
- ☐ 重設印表機會清除所有列印工作。在您重設印表機時，請確定 Ready (就緒) 燈號未閃爍。

使用 IPsec、存取控制及 IEEE 802.1X 功能確保通訊安全

本產品支援使用 IPsec 通訊協定及存取控制功能來確保資料通訊的安全。

	IPsec	存取控制
資料格式	加密資料	未加密資料
支援的作業系統	Windows 8/7/Vista	本產品支援的所有作業系統

IPsec 通訊協定

IPsec 通訊協定能將資料加密或驗證網路上的用戶端使用者，因此十分適合用來確保 IP 通訊的安全。若想使用此功能，請在印表機上使用 EpsonNet Config with Web Browser 完成必要的設定。另外也必須在網路的用戶端電腦上完成安全性設定。請參考 EpsonNet Config with Web Browser 的說明以瞭解詳情。

存取控制

存取控制功能可供您對印表機的網路存取設下限制。

- ❑ 限制只讓指定的用戶端使用者存取印表機
- ❑ 限制只讓印表機針對指定用途進行通訊 (例如讓管理員存取管理資訊)

若想使用此功能，請在印表機上使用 EpsonNet Config with Web Browser 完成必要的設定。請參考 EpsonNet Config with Web Browser 的說明以瞭解詳情。

IEEE 802.1X

IEEE 802.1X 為標準的通訊協定，能在取得連線前，對用戶端使用者進行網路驗證。不論有線及無線網路，它都能提供有效的存取控制能力。

IEEE 802.1X 網路是由驗證伺服器 (RADIUS 伺服器) 與驗證器 (具備驗證功能的交換型集線器) 所組成。通過驗證伺服器與驗證器的驗證後，要求者 (印表機等裝置) 便可加入 IEEE 802.1X 網路。

若要透過 IEEE 802.1X 網路進行列印，在將印表機連線至 IEEE 802.1X 網路前，您必須先使用未連上 IEEE 802.1X 網路的電腦進行必要的網路設定。

1. 使用乙太網路線，將印表機連接至未連上網路的電腦。
2. 指派 IP 位址給印表機，並列印網路狀態表以確認 IP 位址。
3. 在電腦上啟動 EpsonNet Config with Web Browser 並匯入數位憑證，然後進行 IEEE 802.1X 設定及其他必要的設定。
4. 關閉印表機的電源，並中斷印表機與電腦的連線。
5. 將印表機連接至目的地 IEEE 802.1X 網路並開啓電源，接著列印網路狀態表以確認各項設定。

請參考 EpsonNet Config with Web Browser 的說明以瞭解詳情。

附錄 A

軟體授權條款

Open Source Software Licenses

本產品包含一些開放原始碼軟體。下表列出本產品使用的開放原始碼軟體及其授權。

軟體授權	軟體版本	應用程式軟體套件
GNU GPL	GNU General Public License Version 2, June 1991 or later	linux-2.6.35-arm1-epson12
		ethtool-2.6.35
		busybox-1.17.4
GNU LGPL	GNU Lesser General Public License Version 2, June 1991 or later	uclibc-0.9.32
BSD license	-	busybox-1.17.4
Sun RPC license	-	busybox-1.17.4
Net-SNMP license	-	Net-SNMP
ncftp license	-	ncftp-3.2.4

GNU GPL

GNU GENERAL PUBLIC LICENSE
Version 2, June 1991

Copyright © 1989, 1991 Free Software Foundation, Inc.,
51 Franklin Street, Fifth Floor, Boston, MA 02110-1301 USA
Everyone is permitted to copy and distribute verbatim copies of this license document, but changing it is not allowed.

Preamble

The licenses for most software are designed to take away your freedom to share and change it. By contrast, the GNU General Public License is intended to guarantee your freedom to share and change free software--to make sure the software is free for all its users. This General Public License applies to most of the Free Software Foundation's software and to any other program whose authors commit to using it. (Some other Free Software Foundation software is covered by the GNU Lesser General Public License instead.) You can apply it to your programs, too.

When we speak of free software, we are referring to freedom, not price. Our General Public Licenses are designed to make sure that you have the freedom to distribute copies of free software (and charge for this service if you wish), that you receive source code or can get it if you want it, that you can change the software or use pieces of it in new free programs; and that you know you can do these things.

To protect your rights, we need to make restrictions that forbid anyone to deny you these rights or to ask you to surrender the rights. These restrictions translate to certain responsibilities for you if you distribute copies of the software, or if you modify it.

For example, if you distribute copies of such a program, whether gratis or for a fee, you must give the recipients all the rights that you have. You must make sure that they, too, receive or can get the source code. And you must show them these terms so they know their rights.

We protect your rights with two steps: (1) copyright the software, and (2) offer you this license which gives you legal permission to copy, distribute and/or modify the software.

Also, for each author's protection and ours, we want to make certain that everyone understands that there is no warranty for this free software. If the software is modified by someone else and passed on, we want its recipients to know that what they have is not the original, so that any problems introduced by others will not reflect on the original authors' reputations.

Finally, any free program is threatened constantly by software patents. We wish to avoid the danger that redistributors of a free program will individually obtain patent licenses, in effect making the program proprietary. To prevent this, we have made it clear that any patent must be licensed for everyone's free use or not licensed at all.

The precise terms and conditions for copying, distribution and modification follow.

GNU GENERAL PUBLIC LICENSE
TERMS AND CONDITIONS FOR COPYING,
DISTRIBUTION AND MODIFICATION

0. This License applies to any program or other work which contains a notice placed by the copyright holder saying it may be distributed under the terms of this General Public License. The "Program", below, refers to any such program or work, and a "work based on the Program" means either the Program or any derivative work under copyright law: that is to say, a work containing the Program or a portion of it, either verbatim or with modifications and/or translated into another language. (Hereinafter, translation is included without limitation in the term "modification".) Each licensee is addressed as "you".

Activities other than copying, distribution and modification are not covered by this License; they are outside its scope. The act of running the Program is not restricted, and the output from the Program is covered only if its contents constitute a work based on the Program (independent of having been made by running the Program). Whether that is true depends on what the Program does.

1. You may copy and distribute verbatim copies of the Program's source code as you receive it, in any medium, provided that you conspicuously and appropriately publish on each copy an appropriate copyright notice and disclaimer of warranty; keep intact all the notices that refer to this License and to the absence of any warranty; and give any other recipients of the Program a copy of this License along with the Program.

You may charge a fee for the physical act of transferring a copy, and you may at your option offer warranty protection in exchange for a fee.

2. You may modify your copy or copies of the Program or any portion of it, thus forming a work based on the Program, and copy and distribute such modifications or work under the terms of Section 1 above, provided that you also meet all of these conditions:
 - a) You must cause the modified files to carry prominent notices stating that you changed the files and the date of any change.
 - b) You must cause any work that you distribute or publish, that in whole or in part contains or is derived from the Program or any part thereof, to be licensed as a whole at no charge to all third parties under the terms of this License.
 - c) If the modified program normally reads commands interactively when run, you must cause it, when started running for such interactive use in the most ordinary way, to print or display an announcement including an appropriate copyright notice and a notice that there is no warranty (or else, saying that you provide a warranty) and that users may redistribute the program under these conditions, and telling the user how to view a copy of this License. (Exception: if the Program itself is interactive but does not normally print such an announcement, your work based on the Program is not required to print an announcement.)

These requirements apply to the modified work as a whole. If identifiable sections of that work are not derived from the Program, and can be reasonably considered independent and separate works in themselves, then this License, and its terms, do not apply to those sections when you distribute them as separate works. But when you distribute the same sections as part of a whole which is a work based on the Program, the distribution of the whole must be on the terms of this License, whose permissions for other licensees extend to the entire whole, and thus to each and every part regardless of who wrote it.

Thus, it is not the intent of this section to claim rights or contest your rights to work written entirely by you; rather, the intent is to exercise the right to control the distribution of derivative or collective works based on the Program.

In addition, mere aggregation of another work not based on the Program with the Program (or with a work based on the Program) on a volume of a storage or distribution medium does not bring the other work under the scope of this License.

3. You may copy and distribute the Program (or a work based on it, under Section 2) in object code or executable form under the terms of Sections 1 and 2 above provided that you also do one of the following:
 - a) Accompany it with the complete corresponding machine-readable source code, which must be distributed under the terms of Sections 1 and 2 above on a medium customarily used for software interchange; or,
 - b) Accompany it with a written offer, valid for at least three years, to give any third party, for a charge no more than your cost of physically performing source distribution, a complete machine-readable copy of the corresponding source code, to be distributed under the terms of Sections 1 and 2 above on a medium customarily used for software interchange; or,
 - c) Accompany it with the information you received as to the offer to distribute corresponding source code. (This alternative is allowed only for noncommercial distribution and only if you received the program in object code or executable form with such an offer, in accord with Subsection b above.)

The source code for a work means the preferred form of the work for making modifications to it. For an executable work, complete source code means all the source code for all modules it contains, plus any associated interface definition files, plus the scripts used to control compilation and installation of the executable. However, as a special exception, the source code distributed need not include anything that is normally distributed (in either source or binary form) with the major components (compiler, kernel, and so on) of the operating system on which the executable runs, unless that component itself accompanies the executable.

If distribution of executable or object code is made by offering access to copy from a designated place, then offering equivalent access to copy the source code from the same place counts as distribution of the source code, even though third parties are not compelled to copy the source along with the object code.

4. You may not copy, modify, sublicense, or distribute the Program except as expressly provided under this License. Any attempt otherwise to copy, modify, sublicense or distribute the Program is void, and will automatically terminate your rights under this License. However, parties who have received copies, or rights, from you under this License will not have their licenses terminated so long as such parties remain in full compliance.
5. You are not required to accept this License, since you have not signed it. However, nothing else grants you permission to modify or distribute the Program or its derivative works. These actions are prohibited by law if you do not accept this License. Therefore, by modifying or distributing the Program (or any work based on the Program), you indicate your acceptance of this License to do so, and all its terms and conditions for copying, distributing or modifying the Program or works based on it.
6. Each time you redistribute the Program (or any work based on the Program), the recipient automatically receives a license from the original licensor to copy, distribute or modify the Program subject to these terms and conditions. You may not impose any further restrictions on the recipients' exercise of the rights granted herein. You are not responsible for enforcing compliance by third parties to this License.
7. If, as a consequence of a court judgment or allegation of patent infringement or for any other reason (not limited to patent issues), conditions are imposed on you (whether by court order, agreement or otherwise) that contradict the conditions of this License, they do not excuse you from the conditions of this License. If you cannot distribute so as to satisfy simultaneously your obligations under this License and any other pertinent obligations, then as a consequence you may not distribute the Program at all. For example, if a patent license would not permit royalty-free redistribution of the Program by all those who receive copies directly or indirectly through you, then the only way you could satisfy both it and this License would be to refrain entirely from distribution of the Program.

If any portion of this section is held invalid or unenforceable under any particular circumstance, the balance of the section is intended to apply and the section as a whole is intended to apply in other circumstances.

It is not the purpose of this section to induce you to infringe any patents or other property right claims or to contest validity of any such claims; this section has the sole purpose of protecting the integrity of the free software distribution system, which is implemented by public license practices. Many people have made generous contributions to the wide range of software distributed through that system in reliance on consistent application of that system; it is up to the author/donor to decide if he or she is willing to distribute software through any other system and a licensee cannot impose that choice.

This section is intended to make thoroughly clear what is believed to be a consequence of the rest of this License.

8. If the distribution and/or use of the Program is restricted in certain countries either by patents or by copyrighted interfaces, the original copyright holder who places the Program under this License may add an explicit geographical distribution limitation excluding those countries, so that distribution is permitted only in or among countries not thus excluded. In such case, this License incorporates the limitation as if written in the body of this License.
9. The Free Software Foundation may publish revised and/or new versions of the General Public License from time to time. Such new versions will be similar in spirit to the present version, but may differ in detail to address new problems or concerns.

Each version is given a distinguishing version number. If the Program specifies a version number of this License which applies to it and "any later version", you have the option of following the terms and conditions either of that version or of any later version published by the Free Software Foundation. If the Program does not specify a version number of this License, you may choose any version ever published by the Free Software Foundation.

10. If you wish to incorporate parts of the Program into other free programs whose distribution conditions are different, write to the author to ask for permission. For software which is copyrighted by the Free Software Foundation, write to the Free Software Foundation; we sometimes make exceptions for this. Our decision will be guided by the two goals of preserving the free status of all derivatives of our free software and of promoting the sharing and reuse of software generally.

NO WARRANTY

11. BECAUSE THE PROGRAM IS LICENSED FREE OF CHARGE, THERE IS NO WARRANTY FOR THE PROGRAM, TO THE EXTENT PERMITTED BY APPLICABLE LAW. EXCEPT WHEN OTHERWISE STATED IN WRITING THE COPYRIGHT HOLDERS AND/OR OTHER PARTIES PROVIDE THE PROGRAM "AS IS" WITHOUT WARRANTY OF ANY KIND, EITHER EXPRESSED OR IMPLIED, INCLUDING, BUT NOT LIMITED TO, THE IMPLIED WARRANTIES OF MERCHANTABILITY AND FITNESS FOR A PARTICULAR PURPOSE. THE ENTIRE RISK AS TO THE QUALITY AND PERFORMANCE OF THE PROGRAM IS WITH YOU. SHOULD THE PROGRAM PROVE DEFECTIVE, YOU ASSUME THE COST OF ALL NECESSARY SERVICING, REPAIR OR CORRECTION.
12. IN NO EVENT UNLESS REQUIRED BY APPLICABLE LAW OR AGREED TO IN WRITING WILL ANY COPYRIGHT HOLDER, OR ANY OTHER PARTY WHO MAY MODIFY AND/OR REDISTRIBUTE THE PROGRAM AS PERMITTED ABOVE, BE LIABLE TO YOU FOR DAMAGES, INCLUDING ANY GENERAL, SPECIAL, INCIDENTAL OR CONSEQUENTIAL DAMAGES ARISING OUT OF THE USE OR INABILITY TO USE THE PROGRAM (INCLUDING BUT NOT LIMITED TO LOSS OF DATA OR DATA BEING RENDERED INACCURATE OR LOSSES SUSTAINED BY YOU OR THIRD PARTIES OR A FAILURE OF THE PROGRAM TO OPERATE WITH ANY OTHER PROGRAMS), EVEN IF SUCH HOLDER OR OTHER PARTY HAS BEEN ADVISED OF THE POSSIBILITY OF SUCH DAMAGES.

END OF TERMS AND CONDITIONS

How to Apply These Terms to Your New Programs

If you develop a new program, and you want it to be of the greatest possible use to the public, the best way to achieve this is to make it free software which everyone can redistribute and change under these terms.

To do so, attach the following notices to the program. It is safest to attach them to the start of each source file to most effectively convey the exclusion of warranty; and each file should have at least the "copyright" line and a pointer to where the full notice is found.

```
<one line to give the program's name and a brief idea of what it does.>
Copyright © <year> <name of author>
```

This program is free software; you can redistribute it and/or modify it under the terms of the GNU General Public License as published by the Free Software Foundation; either version 2 of the License, or (at your option) any later version.

This program is distributed in the hope that it will be useful, but WITHOUT ANY WARRANTY; without even the implied warranty of MERCHANTABILITY or FITNESS FOR A PARTICULAR PURPOSE. See the GNU General Public License for more details.

You should have received a copy of the GNU General Public License along with this program; if not, write to the Free Software Foundation, Inc., 51 Franklin Street, Fifth Floor, Boston, MA 02110-1301 USA.

Also add information on how to contact you by electronic and paper mail.

If the program is interactive, make it output a short notice like this when it starts in an interactive mode:

```
Gnomovision version 69, Copyright © year name of author
Gnomovision comes with ABSOLUTELY NO WARRANTY; for details type `show w'.
This is free software, and you are welcome to redistribute it under certain conditions; type `show c'
for details.
```

The hypothetical commands `show w' and `show c' should show the appropriate parts of the General Public License. Of course, the commands you use may be called something other than `show w' and `show c'; they could even be mouse-clicks or menu items--whatever suits your program.

You should also get your employer (if you work as a programmer) or your school, if any, to sign a "copyright disclaimer" for the program, if necessary. Here is a sample; alter the names:

Yoyodyne, Inc., hereby disclaims all copyright interest in the program 'Gnomovision' (which makes passes at compilers) written by James Hacker.

```
<signature of Ty Coon>, 1 April 1989
Ty Coon, President of Vice
```

This General Public License does not permit incorporating your program into proprietary programs. If your program is a subroutine library, you may consider it more useful to permit linking proprietary applications with the library. If this is what you want to do, use the GNU Lesser General Public License instead of this License.

GNU LGPL

GNU LESSER GENERAL PUBLIC LICENSE
Version 2.1, February 1999

Copyright © 1991, 1999 Free Software Foundation, Inc.
51 Franklin Street, Fifth Floor, Boston, MA 02110-1301 USA
Everyone is permitted to copy and distribute verbatim copies of this license document, but changing it is not allowed.

[This is the first released version of the Lesser GPL. It also counts as the successor of the GNU Library Public License, version 2, hence the version number 2.1.]

Preamble

The licenses for most software are designed to take away your freedom to share and change it. By contrast, the GNU General Public Licenses are intended to guarantee your freedom to share and change free software--to make sure the software is free for all its users.

This license, the Lesser General Public License, applies to some specially designated software packages--typically libraries--of the Free Software Foundation and other authors who decide to use it. You can use it too, but we suggest you first think carefully about whether this license or the ordinary General Public License is the better strategy to use in any particular case, based on the explanations below.

When we speak of free software, we are referring to freedom of use, not price. Our General Public Licenses are designed to make sure that you have the freedom to distribute copies of free software (and charge for this service if you wish); that you receive source code or can get it if you want it; that you can change the software and use pieces of it in new free programs; and that you are informed that you can do these things.

To protect your rights, we need to make restrictions that forbid distributors to deny you these rights or to ask you to surrender these rights. These restrictions translate to certain responsibilities for you if you distribute copies of the library or if you modify it.

For example, if you distribute copies of the library, whether gratis or for a fee, you must give the recipients all the rights that we gave you. You must make sure that they, too, receive or can get the source code. If you link other code with the library, you must provide complete object files to the recipients, so that they can relink them with the library after making changes to the library and recompiling it. And you must show them these terms so they know their rights.

We protect your rights with a two-step method: (1) we copyright the library, and (2) we offer you this license, which gives you legal permission to copy, distribute and/or modify the library.

To protect each distributor, we want to make it very clear that there is no warranty for the free library. Also, if the library is modified by someone else and passed on, the recipients should know that what they have is not the original version, so that the original author's reputation will not be affected by problems that might be introduced by others.

Finally, software patents pose a constant threat to the existence of any free program. We wish to make sure that a company cannot effectively restrict the users of a free program by obtaining a restrictive license from a patent holder. Therefore, we insist that any patent license obtained for a version of the library must be consistent with the full freedom of use specified in this license.

Most GNU software, including some libraries, is covered by the ordinary GNU General Public License. This license, the GNU Lesser General Public License, applies to certain designated libraries, and is quite different from the ordinary General Public License. We use this license for certain libraries in order to permit linking those libraries into non-free programs.

When a program is linked with a library, whether statically or using a shared library, the combination of the two is legally speaking a combined work, a derivative of the original library. The ordinary General Public License therefore permits such linking only if the entire combination fits its criteria of freedom. The Lesser General Public License permits more lax criteria for linking other code with the library.

We call this license the "Lesser" General Public License because it does Less to protect the user's freedom than the ordinary General Public License. It also provides other free software developers Less of an advantage over competing non-free programs. These disadvantages are the reason we use the ordinary General Public License for many libraries. However, the Lesser license provides advantages in certain special circumstances.

For example, on rare occasions, there may be a special need to encourage the widest possible use of a certain library, so that it becomes a de-facto standard. To achieve this, non-free programs must be allowed to use the library. A more frequent case is that a free library does the same job as widely used non-free libraries. In this case, there is little to gain by limiting the free library to free software only, so we use the Lesser General Public License.

In other cases, permission to use a particular library in non-free programs enables a greater number of people to use a large body of free software. For example, permission to use the GNU C Library in non-free programs enables many more people to use the whole GNU operating system, as well as its variant, the GNU/Linux operating system.

Although the Lesser General Public License is Less protective of the users' freedom, it does ensure that the user of a program that is linked with the Library has the freedom and the wherewithal to run that program using a modified version of the Library.

The precise terms and conditions for copying, distribution and modification follow. Pay close attention to the difference between a "work based on the library" and a "work that uses the library". The former contains code derived from the library, whereas the latter must be combined with the library in order to run.

GNU LESSER GENERAL PUBLIC LICENSE TERMS AND CONDITIONS FOR COPYING, DISTRIBUTION AND MODIFICATION

0. This License Agreement applies to any software library or other program which contains a notice placed by the copyright holder or other authorized party saying it may be distributed under the terms of this Lesser General Public License (also called "this License"). Each licensee is addressed as "you".

A "library" means a collection of software functions and/or data prepared so as to be conveniently linked with application programs (which use some of those functions and data) to form executables.

The "Library", below, refers to any such software library or work which has been distributed under these terms. A "work based on the Library" means either the Library or any derivative work under copyright law: that is to say, a work containing the Library or a portion of it, either verbatim or with modifications and/or translated straightforwardly into another language. (Hereinafter, translation is included without limitation in the term "modification".)

"Source code" for a work means the preferred form of the work for making modifications to it. For a library, complete source code means all the source code for all modules it contains, plus any associated interface definition files, plus the scripts used to control compilation and installation of the library.

Activities other than copying, distribution and modification are not covered by this License; they are outside its scope. The act of running a program using the Library is not restricted, and output from such a program is covered only if its contents constitute a work based on the Library (independent of the use of the Library in a tool for writing it). Whether that is true depends on what the Library does and what the program that uses the Library does.

1. You may copy and distribute verbatim copies of the Library's complete source code as you receive it, in any medium, provided that you conspicuously and appropriately publish on each copy an appropriate copyright notice and disclaimer of warranty; keep intact all the notices that refer to this License and to the absence of any warranty; and distribute a copy of this License along with the Library.

You may charge a fee for the physical act of transferring a copy, and you may at your option offer warranty protection in exchange for a fee.

2. You may modify your copy or copies of the Library or any portion of it, thus forming a work based on the Library, and copy and distribute such modifications or work under the terms of Section 1 above, provided that you also meet all of these conditions:
 - a) The modified work must itself be a software library.
 - b) You must cause the files modified to carry prominent notices stating that you changed the files and the date of any change.

- c) You must cause the whole of the work to be licensed at no charge to all third parties under the terms of this License.
- d) If a facility in the modified Library refers to a function or a table of data to be supplied by an application program that uses the facility, other than as an argument passed when the facility is invoked, then you must make a good faith effort to ensure that, in the event an application does not supply such function or table, the facility still operates, and performs whatever part of its purpose remains meaningful.

(For example, a function in a library to compute square roots has a purpose that is entirely well-defined independent of the application. Therefore, Subsection 2d requires that any application-supplied function or table used by this function must be optional: if the application does not supply it, the square root function must still compute square roots.)

These requirements apply to the modified work as a whole. If identifiable sections of that work are not derived from the Library, and can be reasonably considered independent and separate works in themselves, then this License, and its terms, do not apply to those sections when you distribute them as separate works. But when you distribute the same sections as part of a whole which is a work based on the Library, the distribution of the whole must be on the terms of this License, whose permissions for other licensees extend to the entire whole, and thus to each and every part regardless of who wrote it.

Thus, it is not the intent of this section to claim rights or contest your rights to work written entirely by you; rather, the intent is to exercise the right to control the distribution of derivative or collective works based on the Library.

In addition, mere aggregation of another work not based on the Library with the Library (or with a work based on the Library) on a volume of a storage or distribution medium does not bring the other work under the scope of this License.

3. You may opt to apply the terms of the ordinary GNU General Public License instead of this License to a given copy of the Library. To do this, you must alter all the notices that refer to this License, so that they refer to the ordinary GNU General Public License, version 2, instead of to this License. (If a newer version than version 2 of the ordinary GNU General Public License has appeared, then you can specify that version instead if you wish.) Do not make any other change in these notices.

Once this change is made in a given copy, it is irreversible for that copy, so the ordinary GNU General Public License applies to all subsequent copies and derivative works made from that copy.

This option is useful when you wish to copy part of the code of the Library into a program that is not a library.

4. You may copy and distribute the Library (or a portion or derivative of it, under Section 2) in object code or executable form under the terms of Sections 1 and 2 above provided that you accompany it with the complete corresponding machine-readable source code, which must be distributed under the terms of Sections 1 and 2 above on a medium customarily used for software interchange.

If distribution of object code is made by offering access to copy from a designated place, then offering equivalent access to copy the source code from the same place satisfies the requirement to distribute the source code, even though third parties are not compelled to copy the source along with the object code.

5. A program that contains no derivative of any portion of the Library, but is designed to work with the Library by being compiled or linked with it, is called a "work that uses the Library". Such a work, in isolation, is not a derivative work of the Library, and therefore falls outside the scope of this License.

However, linking a "work that uses the Library" with the Library creates an executable that is a derivative of the Library (because it contains portions of the Library), rather than a "work that uses the library". The executable is therefore covered by this License. Section 6 states terms for distribution of such executables.

When a "work that uses the Library" uses material from a header file that is part of the Library, the object code for the work may be a derivative work of the Library even though the source code is not. Whether this is true is especially significant if the work can be linked without the Library, or if the work is itself a library. The threshold for this to be true is not precisely defined by law.

If such an object file uses only numerical parameters, data structure layouts and accessors, and small macros and small inline functions (ten lines or less in length), then the use of the object file is unrestricted, regardless of whether it is legally a derivative work. (Executables containing this object code plus portions of the Library will still fall under Section 6.)

Otherwise, if the work is a derivative of the Library, you may distribute the object code for the work under the terms of Section 6. Any executables containing that work also fall under Section 6, whether or not they are linked directly with the Library itself.

6. As an exception to the Sections above, you may also combine or link a "work that uses the Library" with the Library to produce a work containing portions of the Library, and distribute that work under terms of your choice, provided that the terms permit modification of the work for the customer's own use and reverse engineering for debugging such modifications.

You must give prominent notice with each copy of the work that the Library is used in it and that the Library and its use are covered by this License. You must supply a copy of this License. If the work during execution displays copyright notices, you must include the copyright notice for the Library among them, as well as a reference directing the user to the copy of this License. Also, you must do one of these things:

- a) Accompany the work with the complete corresponding machine-readable source code for the Library including whatever changes were used in the work (which must be distributed under Sections 1 and 2 above); and, if the work is an executable linked with the Library, with the complete machine-readable "work that uses the Library", as object code and/or source code, so that the user can modify the Library and then relink to produce a modified executable containing the modified Library. (It is understood that the user who changes the contents of definitions files in the Library will not necessarily be able to recompile the application to use the modified definitions.)
- b) Use a suitable shared library mechanism for linking with the Library. A suitable mechanism is one that (1) uses at run time a copy of the library already present on the user's computer system, rather than copying library functions into the executable, and (2) will operate properly with a modified version of the library, if the user installs one, as long as the modified version is interface-compatible with the version that the work was made with.
- c) Accompany the work with a written offer, valid for at least three years, to give the same user the materials specified in Subsection 6a, above, for a charge no more than the cost of performing this distribution.
- d) If distribution of the work is made by offering access to copy from a designated place, offer equivalent access to copy the above specified materials from the same place.
- e) Verify that the user has already received a copy of these materials or that you have already sent this user a copy.

For an executable, the required form of the "work that uses the Library" must include any data and utility programs needed for reproducing the executable from it. However, as a special exception, the materials to be distributed need not include anything that is normally distributed (in either source or binary form) with the major components (compiler, kernel, and so on) of the operating system on which the executable runs, unless that component itself accompanies the executable.

It may happen that this requirement contradicts the license restrictions of other proprietary libraries that do not normally accompany the operating system. Such a contradiction means you cannot use both them and the Library together in an executable that you distribute.

7. You may place library facilities that are a work based on the Library side-by-side in a single library together with other library facilities not covered by this License, and distribute such a combined library, provided that the separate distribution of the work based on the Library and of the other library facilities is otherwise permitted, and provided that you do these two things:
 - a) Accompany the combined library with a copy of the same work based on the Library, uncombined with any other library facilities. This must be distributed under the terms of the Sections above.
 - b) Give prominent notice with the combined library of the fact that part of it is a work based on the Library, and explaining where to find the accompanying uncombined form of the same work.
8. You may not copy, modify, sublicense, link with, or distribute the Library except as expressly provided under this License. Any attempt otherwise to copy, modify, sublicense, link with, or distribute the Library is void, and will automatically terminate your rights under this License. However, parties who have received copies, or rights, from you under this License will not have their licenses terminated so long as such parties remain in full compliance.
9. You are not required to accept this License, since you have not signed it. However, nothing else grants you permission to modify or distribute the Library or its derivative works. These actions are prohibited by law if you do not accept this License. Therefore, by modifying or distributing the Library (or any work based on the Library), you indicate your acceptance of this License to do so, and all its terms and conditions for copying, distributing or modifying the Library or works based on it.
10. Each time you redistribute the Library (or any work based on the Library), the recipient automatically receives a license from the original licensor to copy, distribute, link with or modify the Library subject to these terms and conditions. You may not impose any further restrictions on the recipients' exercise of the rights granted herein. You are not responsible for enforcing compliance by third parties with this License.
11. If, as a consequence of a court judgment or allegation of patent infringement or for any other reason (not limited to patent issues), conditions are imposed on you (whether by court order, agreement or otherwise) that contradict the conditions of this License, they do not excuse you from the conditions of this License. If you cannot distribute so as to satisfy simultaneously your obligations under this License and any other pertinent obligations, then as a consequence you may not distribute the Library at all. For example, if a patent license would not permit royalty-free redistribution of the Library by all those who receive copies directly or indirectly through you, then the only way you could satisfy both it and this License would be to refrain entirely from distribution of the Library.

If any portion of this section is held invalid or unenforceable under any particular circumstance, the balance of the section is intended to apply, and the section as a whole is intended to apply in other circumstances.

It is not the purpose of this section to induce you to infringe any patents or other property right claims or to contest validity of any such claims; this section has the sole purpose of protecting the integrity of the free software distribution system which is implemented by public license practices. Many people have made generous contributions to the wide range of software distributed through that system in reliance on consistent application of that system; it is up to the author/donor to decide if he or she is willing to distribute software through any other system and a licensee cannot impose that choice.

This section is intended to make thoroughly clear what is believed to be a consequence of the rest of this License.

12. If the distribution and/or use of the Library is restricted in certain countries either by patents or by copyrighted interfaces, the original copyright holder who places the Library under this License may add an explicit geographical distribution limitation excluding those countries, so that distribution is permitted only in or among countries not thus excluded. In such case, this License incorporates the limitation as if written in the body of this License.
13. The Free Software Foundation may publish revised and/or new versions of the Lesser General Public License from time to time. Such new versions will be similar in spirit to the present version, but may differ in detail to address new problems or concerns.

Each version is given a distinguishing version number. If the Library specifies a version number of this License which applies to it and "any later version", you have the option of following the terms and conditions either of that version or of any later version published by the Free Software Foundation. If the Library does not specify a license version number, you may choose any version ever published by the Free Software Foundation.

14. If you wish to incorporate parts of the Library into other free programs whose distribution conditions are incompatible with these, write to the author to ask for permission. For software which is copyrighted by the Free Software Foundation, write to the Free Software Foundation; we sometimes make exceptions for this. Our decision will be guided by the two goals of preserving the free status of all derivatives of our free software and of promoting the sharing and reuse of software generally.

NO WARRANTY

15. BECAUSE THE LIBRARY IS LICENSED FREE OF CHARGE, THERE IS NO WARRANTY FOR THE LIBRARY, TO THE EXTENT PERMITTED BY APPLICABLE LAW. EXCEPT WHEN OTHERWISE STATED IN WRITING THE COPYRIGHT HOLDERS AND/OR OTHER PARTIES PROVIDE THE LIBRARY "AS IS" WITHOUT WARRANTY OF ANY KIND, EITHER EXPRESSED OR IMPLIED, INCLUDING, BUT NOT LIMITED TO, THE IMPLIED WARRANTIES OF MERCHANTABILITY AND FITNESS FOR A PARTICULAR PURPOSE. THE ENTIRE RISK AS TO THE QUALITY AND PERFORMANCE OF THE LIBRARY IS WITH YOU. SHOULD THE LIBRARY PROVE DEFECTIVE, YOU ASSUME THE COST OF ALL NECESSARY SERVICING, REPAIR OR CORRECTION.
16. IN NO EVENT UNLESS REQUIRED BY APPLICABLE LAW OR AGREED TO IN WRITING WILL ANY COPYRIGHT HOLDER, OR ANY OTHER PARTY WHO MAY MODIFY AND/OR REDISTRIBUTE THE LIBRARY AS PERMITTED ABOVE, BE LIABLE TO YOU FOR DAMAGES, INCLUDING ANY GENERAL, SPECIAL, INCIDENTAL OR CONSEQUENTIAL DAMAGES ARISING OUT OF THE USE OR INABILITY TO USE THE LIBRARY (INCLUDING BUT NOT LIMITED TO LOSS OF DATA OR DATA BEING RENDERED INACCURATE OR LOSSES SUSTAINED BY YOU OR THIRD PARTIES OR A FAILURE OF THE LIBRARY TO OPERATE WITH ANY OTHER SOFTWARE), EVEN IF SUCH HOLDER OR OTHER PARTY HAS BEEN ADVISED OF THE POSSIBILITY OF SUCH DAMAGES.

END OF TERMS AND CONDITIONS

How to Apply These Terms to Your New Libraries

If you develop a new library, and you want it to be of the greatest possible use to the public, we recommend making it free software that everyone can redistribute and change. You can do so by permitting redistribution under these terms (or, alternatively, under the terms of the ordinary General Public License).

To apply these terms, attach the following notices to the library. It is safest to attach them to the start of each source file to most effectively convey the exclusion of warranty; and each file should have at least the "copyright" line and a pointer to where the full notice is found.

<one line to give the program's name and a brief idea of what it does.>
Copyright © <year> <name of author>

This library is free software; you can redistribute it and/or modify it under the terms of the GNU Lesser General Public License as published by the Free Software Foundation; either version 2.1 of the License, or (at your option) any later version.

This library is distributed in the hope that it will be useful, but WITHOUT ANY WARRANTY; without even the implied warranty of MERCHANTABILITY or FITNESS FOR A PARTICULAR PURPOSE. See the GNU Lesser General Public License for more details.

You should have received a copy of the GNU Lesser General Public License along with this library; if not, write to the Free Software Foundation, Inc., 51 Franklin Street, Fifth Floor, Boston, MA 02110-1301 USA

Also add information on how to contact you by electronic and paper mail.

You should also get your employer (if you work as a programmer) or your school, if any, to sign a "copyright disclaimer" for the library, if necessary. Here is a sample; alter the names:

Yoyodyne, Inc., hereby disclaims all copyright interest in the library 'Frob' (a library for tweaking knobs) written by James Random Hacker.

<signature of Ty Coon>, 1 April 1990
Ty Coon, President of Vice

That's all there is to it!

BSD License

Copyright © The Regents of the University of California.
All rights reserved.

Redistribution and use in source and binary forms, with or without modification, are permitted provided that the following conditions are met:

1. Redistributions of source code must retain the above copyright notice, this list of conditions and the following disclaimer.
2. Redistributions in binary form must reproduce the above copyright notice, this list of conditions and the following disclaimer in the documentation and/or other materials provided with the distribution.
3. Neither the name of the University nor the names of its contributors may be used to endorse or promote products derived from this software without specific prior written permission.

THIS SOFTWARE IS PROVIDED BY THE REGENTS AND CONTRIBUTORS "AS IS" AND ANY EXPRESS OR IMPLIED WARRANTIES, INCLUDING, BUT NOT LIMITED TO, THE IMPLIED WARRANTIES OF MERCHANTABILITY AND FITNESS FOR A PARTICULAR PURPOSE ARE DISCLAIMED. IN NO EVENT SHALL THE REGENTS OR CONTRIBUTORS BE LIABLE FOR ANY DIRECT, INDIRECT, INCIDENTAL, SPECIAL, EXEMPLARY, OR CONSEQUENTIAL DAMAGES (INCLUDING, BUT NOT LIMITED TO, PROCUREMENT OF SUBSTITUTE GOODS OR SERVICES; LOSS OF USE, DATA, OR PROFITS; OR BUSINESS INTERRUPTION) HOWEVER CAUSED AND ON ANY THEORY OF LIABILITY, WHETHER IN CONTRACT, STRICT LIABILITY, OR TORT (INCLUDING NEGLIGENCE OR OTHERWISE) ARISING IN ANY WAY OUT OF THE USE OF THIS SOFTWARE, EVEN IF ADVISED OF THE POSSIBILITY OF SUCH DAMAGE.

Sun RPC License

Copyright © Sun Microsystems, Inc.

Sun RPC is a product of Sun Microsystems, Inc. and is provided for unrestricted use provided that this legend is included on all tape media and as a part of the software program in whole or part. Users may copy or modify Sun RPC without charge, but are not authorized to license or distribute it to anyone else except as part of a product or program developed by the user or with the express written consent of Sun Microsystems, Inc.

SUN RPC IS PROVIDED AS IS WITH NO WARRANTIES OF ANY KIND INCLUDING THE WARRANTIES OF DESIGN, MERCHANTABILITY AND FITNESS FOR A PARTICULAR PURPOSE, OR ARISING FROM A COURSE OF DEALING, USAGE OR TRADE PRACTICE.

Sun RPC is provided with no support and without any obligation on the part of Sun Microsystems, Inc. to assist in its use, correction, modification or enhancement.

SUN MICROSYSTEMS, INC. SHALL HAVE NO LIABILITY WITH RESPECT TO THE INFRINGEMENT OF COPYRIGHTS, TRADE SECRETS OR ANY PATENTS BY SUN RPC OR ANY PART THEREOF.

In no event will Sun Microsystems, Inc. be liable for any lost revenue or profits or other special, indirect and consequential damages, even if Sun has been advised of the possibility of such damages.

Sun Microsystems, Inc.
2550 Garcia Avenue
Mountain View, California 94043

Net-SNMP License

---- Part 1: CMU/UCD copyright notice: (BSD like) ----

Copyright 1989, 1991, 1992 by Carnegie Mellon University

Derivative Work - 1996, 1998-2000

Copyright 1996, 1998-2000 The Regents of the University of California

All Rights Reserved

Permission to use, copy, modify and distribute this software and its documentation for any purpose and without fee is hereby granted, provided that the above copyright notice appears in all copies and that both that copyright notice and this permission notice appear in supporting documentation, and that the name of CMU and The Regents of the University of California not be used in advertising or publicity pertaining to distribution of the software without specific written permission.

CMU AND THE REGENTS OF THE UNIVERSITY OF CALIFORNIA DISCLAIM ALL WARRANTIES WITH REGARD TO THIS SOFTWARE, INCLUDING ALL IMPLIED WARRANTIES OF MERCHANTABILITY AND FITNESS. IN NO EVENT SHALL CMU OR THE REGENTS OF THE UNIVERSITY OF CALIFORNIA BE LIABLE FOR ANY SPECIAL, INDIRECT OR CONSEQUENTIAL DAMAGES OR ANY DAMAGES WHATSOEVER RESULTING FROM THE LOSS OF USE, DATA OR PROFITS, WHETHER IN AN ACTION OF CONTRACT, NEGLIGENCE OR OTHER TORTIOUS ACTION, ARISING OUT OF OR IN CONNECTION WITH THE USE OR PERFORMANCE OF THIS SOFTWARE.

---- Part 2: Networks Associates Technology, Inc copyright notice (BSD) ----

Copyright © 2001-2003, Networks Associates Technology, Inc
All rights reserved.

Redistribution and use in source and binary forms, with or without modification, are permitted provided that the following conditions are met:

- ☐ Redistributions of source code must retain the above copyright notice, this list of conditions and the following disclaimer.
- ☐ Redistributions in binary form must reproduce the above copyright notice, this list of conditions and the following disclaimer in the documentation and/or other materials provided with the distribution.

- ❑ Neither the name of the Networks Associates Technology, Inc nor the names of its contributors may be used to endorse or promote products derived from this software without specific prior written permission.

THIS SOFTWARE IS PROVIDED BY THE COPYRIGHT HOLDERS AND CONTRIBUTORS "AS IS" AND ANY EXPRESS OR IMPLIED WARRANTIES, INCLUDING, BUT NOT LIMITED TO, THE IMPLIED WARRANTIES OF MERCHANTABILITY AND FITNESS FOR A PARTICULAR PURPOSE ARE DISCLAIMED. IN NO EVENT SHALL THE COPYRIGHT HOLDERS OR CONTRIBUTORS BE LIABLE FOR ANY DIRECT, INDIRECT, INCIDENTAL, SPECIAL, EXEMPLARY, OR CONSEQUENTIAL DAMAGES (INCLUDING, BUT NOT LIMITED TO, PROCUREMENT OF SUBSTITUTE GOODS OR SERVICES; LOSS OF USE, DATA, OR PROFITS; OR BUSINESS INTERRUPTION) HOWEVER CAUSED AND ON ANY THEORY OF LIABILITY, WHETHER IN CONTRACT, STRICT LIABILITY, OR TORT (INCLUDING NEGLIGENCE OR OTHERWISE) ARISING IN ANY WAY OUT OF THE USE OF THIS SOFTWARE, EVEN IF ADVISED OF THE POSSIBILITY OF SUCH DAMAGE.

---- Part 3: Cambridge Broadband Ltd. copyright notice (BSD) ----

Portions of this code are copyright © 2001-2003, Cambridge Broadband Ltd.
All rights reserved.

Redistribution and use in source and binary forms, with or without modification, are permitted provided that the following conditions are met:

- ❑ Redistributions of source code must retain the above copyright notice, this list of conditions and the following disclaimer.
- ❑ Redistributions in binary form must reproduce the above copyright notice, this list of conditions and the following disclaimer in the documentation and/or other materials provided with the distribution.
- ❑ The name of Cambridge Broadband Ltd. may not be used to endorse or promote products derived from this software without specific prior written permission.

THIS SOFTWARE IS PROVIDED BY THE COPYRIGHT HOLDER "AS IS" AND ANY EXPRESS OR IMPLIED WARRANTIES, INCLUDING, BUT NOT LIMITED TO, THE IMPLIED WARRANTIES OF MERCHANTABILITY AND FITNESS FOR A PARTICULAR PURPOSE ARE DISCLAIMED. IN NO EVENT SHALL THE COPYRIGHT HOLDER BE LIABLE FOR ANY DIRECT, INDIRECT, INCIDENTAL, SPECIAL, EXEMPLARY, OR CONSEQUENTIAL DAMAGES (INCLUDING, BUT NOT LIMITED TO, PROCUREMENT OF SUBSTITUTE GOODS OR SERVICES; LOSS OF USE, DATA, OR PROFITS; OR BUSINESS INTERRUPTION) HOWEVER CAUSED AND ON ANY THEORY OF LIABILITY, WHETHER IN CONTRACT, STRICT LIABILITY, OR TORT (INCLUDING NEGLIGENCE OR OTHERWISE) ARISING IN ANY WAY OUT OF THE USE OF THIS SOFTWARE, EVEN IF ADVISED OF THE POSSIBILITY OF SUCH DAMAGE.

---- Part 4: Sun Microsystems, Inc. copyright notice (BSD) ----

Copyright © 2003 Sun Microsystems, Inc., 4150 Network Circle, Santa Clara, California 95054, U.S.A.
All rights reserved.

Use is subject to license terms below.

This distribution may include materials developed by third parties.

Sun, Sun Microsystems, the Sun logo and Solaris are trademarks or registered trademarks of Sun Microsystems, Inc. in the U.S. and other countries.

Redistribution and use in source and binary forms, with or without modification, are permitted provided that the following conditions are met:

- ☐ Redistributions of source code must retain the above copyright notice, this list of conditions and the following disclaimer.
- ☐ Redistributions in binary form must reproduce the above copyright notice, this list of conditions and the following disclaimer in the documentation and/or other materials provided with the distribution.
- ☐ Neither the name of the Sun Microsystems, Inc. nor the names of its contributors may be used to endorse or promote products derived from this software without specific prior written permission.

THIS SOFTWARE IS PROVIDED BY THE COPYRIGHT HOLDERS AND CONTRIBUTORS "AS IS" AND ANY EXPRESS OR IMPLIED WARRANTIES, INCLUDING, BUT NOT LIMITED TO, THE IMPLIED WARRANTIES OF MERCHANTABILITY AND FITNESS FOR A PARTICULAR PURPOSE ARE DISCLAIMED. IN NO EVENT SHALL THE COPYRIGHT HOLDERS OR CONTRIBUTORS BE LIABLE FOR ANY DIRECT, INDIRECT, INCIDENTAL, SPECIAL, EXEMPLARY, OR CONSEQUENTIAL DAMAGES (INCLUDING, BUT NOT LIMITED TO, PROCUREMENT OF SUBSTITUTE GOODS OR SERVICES; LOSS OF USE, DATA, OR PROFITS; OR BUSINESS INTERRUPTION) HOWEVER CAUSED AND ON ANY THEORY OF LIABILITY, WHETHER IN CONTRACT, STRICT LIABILITY, OR TORT (INCLUDING NEGLIGENCE OR OTHERWISE) ARISING IN ANY WAY OUT OF THE USE OF THIS SOFTWARE, EVEN IF ADVISED OF THE POSSIBILITY OF SUCH DAMAGE.

---- Part 5: Sparta, Inc copyright notice (BSD) ----

Copyright © 2003-2004, Sparta, Inc
All rights reserved.

Redistribution and use in source and binary forms, with or without modification, are permitted provided that the following conditions are met:

- ☐ Redistributions of source code must retain the above copyright notice, this list of conditions and the following disclaimer.
- ☐ Redistributions in binary form must reproduce the above copyright notice, this list of conditions and the following disclaimer in the documentation and/or other materials provided with the distribution.
- ☐ Neither the name of Sparta, Inc nor the names of its contributors may be used to endorse or promote products derived from this software without specific prior written permission.

THIS SOFTWARE IS PROVIDED BY THE COPYRIGHT HOLDERS AND CONTRIBUTORS "AS IS" AND ANY EXPRESS OR IMPLIED WARRANTIES, INCLUDING, BUT NOT LIMITED TO, THE IMPLIED WARRANTIES OF MERCHANTABILITY AND FITNESS FOR A PARTICULAR PURPOSE ARE DISCLAIMED. IN NO EVENT SHALL THE COPYRIGHT HOLDERS OR CONTRIBUTORS BE LIABLE FOR ANY DIRECT, INDIRECT, INCIDENTAL, SPECIAL, EXEMPLARY, OR CONSEQUENTIAL DAMAGES (INCLUDING, BUT NOT LIMITED TO, PROCUREMENT OF SUBSTITUTE GOODS OR SERVICES; LOSS OF USE, DATA, OR PROFITS; OR BUSINESS INTERRUPTION) HOWEVER CAUSED AND ON ANY THEORY OF LIABILITY, WHETHER IN CONTRACT, STRICT LIABILITY, OR TORT (INCLUDING NEGLIGENCE OR OTHERWISE) ARISING IN ANY WAY OUT OF THE USE OF THIS SOFTWARE, EVEN IF ADVISED OF THE POSSIBILITY OF SUCH DAMAGE.

ncftp License

The Clarified Artistic License

Preamble

The intent of this document is to state the conditions under which a Package may be copied, such that the Copyright Holder maintains some semblance of artistic control over the development of the package, while giving the users of the package the right to use and distribute the Package in a more-or-less customary fashion, plus the right to make reasonable modifications.

Definitions:

"Package" refers to the collection of files distributed by the Copyright Holder, and derivatives of that collection of files created through textual modification.

"Standard Version" refers to such a Package if it has not been modified, or has been modified in accordance with the wishes of the Copyright Holder as specified below.

"Copyright Holder" is whoever is named in the copyright or copyrights for the package.

"You" is you, if you're thinking about copying or distributing this Package.

"Distribution fee" is a fee you charge for providing a copy of this Package to another party.

"Freely Available" means that no fee is charged for the right to use the item, though there may be fees involved in handling the item. It also means that recipients of the item may redistribute it under the same conditions they received it.

1. You may make and give away verbatim copies of the source form of the Standard Version of this Package without restriction, provided that you duplicate all of the original copyright notices and associated disclaimers.
2. You may apply bug fixes, portability fixes and other modifications derived from the Public Domain, or those made Freely Available, or from the Copyright Holder. A Package modified in such a way shall still be considered the Standard Version.
3. You may otherwise modify your copy of this Package in any way, provided that you insert a prominent notice in each changed file stating how and when you changed that file, and provided that you do at least ONE of the following:

- a) place your modifications in the Public Domain or otherwise make them Freely Available, such as by posting said modifications to Usenet or an equivalent medium, or placing the modifications on a major network archive site allowing unrestricted access to them, or by allowing the Copyright Holder to include your modifications in the Standard Version of the Package.
 - b) use the modified Package only within your corporation or organization.
 - c) rename any non-standard executables so the names do not conflict with standard executables, which must also be provided, and provide a separate manual page for each non-standard executable that clearly documents how it differs from the Standard Version.
 - d) make other distribution arrangements with the Copyright Holder.
 - e) permit and encourage anyone who receives a copy of the modified Package permission to make your modifications Freely Available in some specific way.
4. You may distribute the programs of this Package in object code or executable form, provided that you do at least ONE of the following:
- a) distribute a Standard Version of the executables and library files, together with instructions (in the manual page or equivalent) on where to get the Standard Version.
 - b) accompany the distribution with the machine-readable source of the Package with your modifications.
 - c) give non-standard executables non-standard names, and clearly document the differences in manual pages (or equivalent), together with instructions on where to get the Standard Version.
 - d) make other distribution arrangements with the Copyright Holder.
 - e) offer the machine-readable source of the Package, with your modifications, by mail order.

5. You may charge a distribution fee for any distribution of this Package. If you offer support for this Package, you may charge any fee you choose for that support. You may not charge a license fee for the right to use this Package itself. You may distribute this Package in aggregate with other (possibly commercial and possibly nonfree) programs as part of a larger (possibly commercial and possibly nonfree) software distribution, and charge license fees for other parts of that software distribution, provided that you do not advertise this Package as a product of your own. If the Package includes an interpreter, You may embed this Package's interpreter within an executable of yours (by linking); this shall be construed as a mere form of aggregation, provided that the complete Standard Version of the interpreter is so embedded.
6. The scripts and library files supplied as input to or produced as output from the programs of this Package do not automatically fall under the copyright of this Package, but belong to whoever generated them, and may be sold commercially, and may be aggregated with this Package. If such scripts or library files are aggregated with this Package via the so-called "undump" or "unexec" methods of producing a binary executable image, then distribution of such an image shall neither be construed as a distribution of this Package nor shall it fall under the restrictions of Paragraphs 3 and 4, provided that you do not represent such an executable image as a Standard Version of this Package.
7. C subroutines (or comparably compiled subroutines in other languages) supplied by you and linked into this Package in order to emulate subroutines and variables of the language defined by this Package shall not be considered part of this Package, but are the equivalent of input as in Paragraph 6, provided these subroutines do not change the language in any way that would cause it to fail the regression tests for the language.
8. Aggregation of the Standard Version of the Package with a commercial distribution is always permitted provided that the use of this Package is embedded; that is, when no overt attempt is made to make this Package's interfaces visible to the end user of the commercial distribution. Such use shall not be construed as a distribution of this Package.
9. The name of the Copyright Holder may not be used to endorse or promote products derived from this software without specific prior written permission.
10. THIS PACKAGE IS PROVIDED "AS IS" AND WITHOUT ANY EXPRESS OR IMPLIED WARRANTIES, INCLUDING, WITHOUT LIMITATION, THE IMPLIED WARRANTIES OF MERCHANTABILITY AND FITNESS FOR A PARTICULAR PURPOSE.

The End

Copyright © 1991, 1992, 1993 by Chris Thewalt (thewalt@ce.berkeley.edu)

Permission to use, copy, modify, and distribute this software for any purpose and without fee is hereby granted, provided that the above copyright notices appear in all copies and that both the copyright notice and this permission notice appear in supporting documentation. This software is provided "as is" without express or implied warranty.

Bonjour

This product contains the Apache Software.

Copyright © 2009 SEIKO EPSON CORPORATION

Licensed under the Apache License, Version 2.0 (the "License");
you may not use this file except in compliance with the License.

You may obtain a copy of the License at
<http://www.apache.org/licenses/LICENSE-2.0>

Unless required by applicable law or agreed to in writing, software distributed under the License is distributed on an "AS IS" BASIS, WITHOUT WARRANTIES OR CONDITIONS OF ANY KIND, either express or implied.

See the License for the specific language governing permissions and limitations under the License.

This product contains the Linux Name Service Switch code.

The Linux Name Service Switch code, contributed by National ICT Australia Ltd (NICTA) is licensed under the NICTA Public Source License version 1.0

NICTA Public Software Licence

Version 1.0

Copyright 2004 National ICT Australia Ltd

All rights reserved.

EXCEPT AS EXPRESSLY STATED IN THIS LICENCE AND TO THE FULL EXTENT PERMITTED BY APPLICABLE LAW, THE SOFTWARE IS PROVIDED “AS IS” AND NICTA MAKES NO REPRESENTATIONS, WARRANTIES OR CONDITIONS OF ANY KIND, EXPRESS OR IMPLIED, INCLUDING, WITHOUT LIMITATION, ANY REPRESENTATIONS, WARRANTIES OR CONDITIONS REGARDING THE CONTENTS OR ACCURACY OF THE SOFTWARE, OR OF TITLE, MERCHANTABILITY, FITNESS FOR A PARTICULAR PURPOSE, NONINFRINGEMENT, THE ABSENCE OF LATENT OR OTHER DEFECTS, OR THE PRESENCE OR ABSENCE OF ERRORS, WHETHER OR NOT DISCOVERABLE.

TO THE FULL EXTENT PERMITTED BY APPLICABLE LAW, IN NO EVENT WILL NICTA BE LIABLE ON ANY LEGAL THEORY (INCLUDING, WITHOUT LIMITATION, NEGLIGENCE) FOR ANY LOSS OR DAMAGE WHATSOEVER, INCLUDING (WITHOUT LIMITATION) LOSS OF PRODUCTION OR OPERATION TIME, LOSS, DAMAGE OR CORRUPTION OF DATA OR RECORDS; OR LOSS OF ANTICIPATED SAVINGS, OPPORTUNITY, REVENUE, PROFIT OR GOODWILL, OR OTHER ECONOMIC LOSS; OR ANY SPECIAL, INCIDENTAL, INDIRECT, CONSEQUENTIAL, PUNITIVE OR EXEMPLARY DAMAGES ARISING OUT OF OR IN CONNECTION WITH THIS LICENCE, THE SOFTWARE OR THE USE OF THE SOFTWARE, EVEN IF NICTA HAS BEEN ADVISED OF THE POSSIBILITY OF SUCH DAMAGES.

If applicable legislation implies warranties or conditions, or imposes obligations or liability on NICTA in respect of the Software that cannot be wholly or partly excluded, restricted or modified, NICTA's liability is limited, to the full extent permitted by the applicable legislation, at its option, to:

a. in the case of goods, any one or more of the following:

- i. the replacement of the goods or the supply of equivalent goods;
- ii. the repair of the goods;
- iii. the payment of the cost of replacing the goods or of acquiring equivalent goods;
- iv. the payment of the cost of having the goods repaired; or

b. in the case of services:

- i. the supplying of the services again; or
- ii. the payment of the cost of having the services supplied again.

WPA supplicant

Copyright © 2003-2010, Jouni Malinen <j@w1.fi> and contributors.

Redistribution and use in source and binary forms, with or without modification, are permitted provided that the following conditions are met:

1. Redistributions of source code must retain the above copyright notice, this list of conditions and the following disclaimer.
2. Redistributions in binary form must reproduce the above copyright notice, this list of conditions and the following disclaimer in the documentation and/or other materials provided with the distribution.
3. Neither the name(s) of the above-listed copyright holder(s) nor the names of its contributors may be used to endorse or promote products derived from this software without specific prior written permission.

THIS SOFTWARE IS PROVIDED BY THE COPYRIGHT HOLDERS AND CONTRIBUTORS “AS IS” AND ANY EXPRESS OR IMPLIED WARRANTIES, INCLUDING, BUT NOT LIMITED TO, THE IMPLIED WARRANTIES OF MERCHANTABILITY AND FITNESS FOR A PARTICULAR PURPOSE ARE DISCLAIMED. IN NO EVENT SHALL THE COPYRIGHT OWNER OR CONTRIBUTORS BE LIABLE FOR ANY DIRECT, INDIRECT, INCIDENTAL, SPECIAL, EXEMPLARY, OR CONSEQUENTIAL DAMAGES (INCLUDING, BUT NOT LIMITED TO, PROCUREMENT OF SUBSTITUTE GOODS OR SERVICES; LOSS OF USE, DATA, OR PROFITS; OR BUSINESS INTERRUPTION) HOWEVER CAUSED AND ON ANY THEORY OF LIABILITY, WHETHER IN CONTRACT, STRICT LIABILITY, OR TORT (INCLUDING NEGLIGENCE OR OTHERWISE) ARISING IN ANY WAY OUT OF THE USE OF THIS SOFTWARE, EVEN IF ADVISED OF THE POSSIBILITY OF SUCH DAMAGE.

Other Software Licenses

Info-ZIP copyright and license

This is version 2007-Mar-4 of the Info-ZIP license. The definitive version of this document should be available at <ftp://ftp.info-zip.org/pub/infozip/license.html> indefinitely and a copy at <http://www.info-zip.org/pub/infozip/license.html>.

Copyright © 1990-2007 Info-ZIP. All rights reserved.

For the purposes of this copyright and license, “Info-ZIP” is defined as the following set of individuals:

Mark Adler, John Bush, Karl Davis, Harald Denker, Jean-Michel Dubois, Jean-loup Gailly, Hunter Goatley, Ed Gordon, Ian Gorman, Chris Herborth, Dirk Haase, Greg Hartwig, Robert Heath, Jonathan Hudson, Paul Kienitz, David Kirschbaum, Johnny Lee, Onno van der Linden, Igor Mandrichenko, Steve P. Miller, Sergio Monesi, Keith Owens, George Petrov, Greg Roelofs, Kai Uwe Rommel, Steve Salisbury, Dave Smith, Steven M. Schweda, Christian Spieler, Cosmin Truta, Antoine Verheijen, Paul von Behren, Rich Wales, Mike White.

Permission is granted to anyone to use this software for any purpose, including commercial applications, and to alter it and redistribute it freely, subject to the above disclaimer and the following restrictions:

1. Redistributions of source code (in whole or in part) must retain the above copyright notice, definition, disclaimer, and this list of conditions.
2. Redistributions in binary form (compiled executables and libraries) must reproduce the above copyright notice, definition, disclaimer, and this list of conditions in documentation and/or other materials provided with the distribution. The sole exception to this condition is redistribution of a standard UnZipSFX binary (including SFXWiz) as part of a self-extracting archive; that is permitted without inclusion of this license, as long as the normal SFX banner has not been removed from the binary or disabled.
3. Altered versions--including, but not limited to, ports to new operating systems, existing ports with new graphical interfaces, versions with modified or added functionality, and dynamic, shared, or static library versions not from Info-ZIP--must be plainly marked as such and must not be misrepresented as being the original source or, if binaries, compiled from the original source. Such altered versions also must not be misrepresented as being Info-ZIP releases--including, but not limited to, labeling of the altered versions with the names "Info-ZIP" (or any variation thereof, including, but not limited to, different capitalizations), "Pocket UnZip," "WiZ" or "MacZip" without the explicit permission of Info-ZIP. Such altered versions are further prohibited from misrepresentative use of the Zip-Bugs or Info-ZIP e-mail addresses or the Info-ZIP URL(s), such as to imply Info-ZIP will provide support for the altered versions.
4. Info-ZIP retains the right to use the names "Info-ZIP," "Zip," "UnZip," "UnZipSFX," "WiZ," "Pocket UnZip," "Pocket Zip," and "MacZip" for its own source and binary releases.

索引

數字拉丁字母

EpsonNet Config (Macintosh).....	37
EpsonNet Config (Web Browser).....	38
EpsonNet Config (Windows).....	36
EpsonNet Print.....	42
IP 位址.....	54
RJ-45 型連接器.....	11

六畫

安裝

EpsonNet Config (Macintosh).....	38
EpsonNet Config (Windows).....	37
EpsonNet Print.....	42

七畫

作業環境.....	9
-----------	---

八畫

使用印表機

Macintosh.....	34
Windows 7.....	22
Windows 8.....	22
Windows Server 2003.....	30
Windows Server 2008.....	22
Windows Server 2012.....	22
Windows Vista.....	22
Windows XP.....	26

十一畫

設定 IP 位址.....	39, 54
通訊協定.....	9

十四畫

網路狀態表.....	53
------------	----