

All rights reserved. No part of this publication may be reproduced, stored in a retrieval system, or transmitted in any form or by any means, electronic, mechanical, photocopying, recording, or otherwise, without the prior written permission of SEIKO EPSON CORPORATION. The information contained herein is designed only for use with this EPSON printer. EPSON is not responsible for any use of this information as applied to other printers.

Neither SEIKO EPSON CORPORATION nor its affiliates shall be liable to the purchaser of this product or third parties for damages, losses, costs, or expenses incurred by the purchaser or third parties as a result of: accident, misuse, or abuse of this product or unauthorized modifications, repairs, or alterations to this product, or (excluding the U.S.) failure to strictly comply with SEIKO EPSON CORPORATION's operating and maintenance instructions.

SEIKO EPSON CORPORATION shall not be liable for any damages or problems arising from the use of any options or any consumable products other than those designated as Original EPSON Products or EPSON Approved Products by SEIKO EPSON CORPORATION.

SEIKO EPSON CORPORATION shall not be held liable for any damage resulting from electromagnetic interference that occurs from the use of any interface cables other than those designated as EPSON Approved Products by SEIKO EPSON CORPORATION.

EPSON is a registered trademark and ESC/P Raster and EPSON STYLUS are trademarks of SEIKO EPSON CORPORATION.

Microsoft and Windows are registered trademarks of Microsoft Corporation.

General Notice: Other product names used herein are for identification purposes only and may be trademarks of their respective owners. EPSON disclaims any and all rights in those marks.

Copyright © 2000 by SEIKO EPSON CORPORATION, Nagano, Japan.

Where to Find Information

This Startup Guide

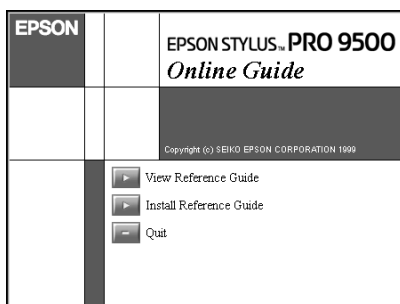
Provides you with the basic information you need to start using your EPSON STYLUS PRO 9500 and its optional and consumable products.

Reference Guide included on the CD-ROM

Provides you with detailed information about printing on roll paper or cut sheet media, the control panel, the printer software, and tips that will help you get the results you want.

Opening the Reference Guide

Insert the printer software CD in the CD-ROM drive. Double-click Online Guide in Installer dialog box (Windows) or double-click Online Guide folder in the EPSON window, EPSON STYLUS PRO 9500 (Macintosh). The dialog box shown below appears.



Click View Reference Guide to open the guide.

To install the Reference Guide on your hard disk, click Install Reference Guide and follow the on-screen instructions. When installation is complete, the ESPR9500 (Windows) or a View Reference Guide (Macintosh) icon appears in the EPSON folder. Double-click the icon to open the guide.

Note:

If your hard disk does not have enough space to install the Reference Guide, view it directly from the CD.

Online Help

Provides you with detailed information and instructions on the printer software that controls your printer. (Online help will be automatically installed when you install the printer software.) See your *Online Guide* for information on accessing online help.

System Requirements

For using your printer with a PC

To use your printer, you need Microsoft® Windows® 95, Windows® 98, Windows NT® 4.0, Windows® 2000; and a shielded, twisted-pair parallel cable. If you want to connect your printer to a USB port, you need a Windows 98 pre-installed PC equipped with a USB port; and a shielded USB cable.

Minimum system	Recommended system
i486/25 MHz for Windows 95 and NT 4.0 i486/66 MHz for Windows 98 Pentium 133 MHz for Windows 2000	Pentium II 300 MHz or higher processor
16 MB RAM for Windows 95/98, NT 4.0 64 MB RAM for Windows 2000	128 MB RAM or more
20 MB hard disk space for Windows 95 and 98 40 MB for Windows NT 4.0 and Windows 2000	400 MB or more free disk space
VGA monitor	VGA or better monitor

Your computer dealer can help you update your system if it does not meet these requirements.

For using your printer with a Macintosh

To use this printer, your Apple® Macintosh® must meet the following system requirements. You also need a USB cable to connect this printer to Apple Macintosh computers.

Minimum system	Recommended system
PowerPC	PowerPC 604e 300 MHz or higher processor
System 7.6.1	System 7.6.1 or later
9 MB of available memory 12 MB of available memory when background printing is turned on.	16 MB or more of available memory 27 MB of available memory when background printing is turned on.

Note:

- ❑ *The amount of available memory varies according to the number and kind of applications that are open. To see how much memory is available, choose About This Macintosh from the Apple menu and refer to the memory size (listed in kilobytes) under “Largest Unused Block” (1,024 K = 1 MB).*
- ❑ *The memory requirements above are for printing on A1 (594 × 841 mm) size paper. These requirements may vary depending on the size of the paper, the type of application you are using, and the complexity of the document you want to print.*

In addition to these system and memory requirements, you also need 12 MB of free hard disk space to install your printer software. To print, you need extra hard disk space amounting to about double the size of the files you want to print.

For using the Online Guide with a PC

System	Microsoft Windows 95, 98, NT 4.0 or Windows 2000
CPU	i486/25 MHz (for Windows 95/NT 4.0) i486/66 MHz (for Windows 98) (Pentium or better recommended) (Pentium 133 MHz (for Windows 2000))
Memory	16 MB (32 MB or more recommended)
Hard disk space	3 MB free to install the Reference Guide
CD-ROM drive	Double-speed (Quad-speed or better recommended)
Display	640 × 480 pixel or 800 × 600 pixel resolution, with High Color (16 bit) or True Color (32 bit) setting
Browser	Web browser (Microsoft Internet Explorer 4.0 or later recommended)

For using the Online Guide with a Macintosh

System	System 7.6.1 or later recommended
Memory	16 MB (32 MB or more recommended)
Hard disk space	3 MB free to install the Reference Guide
CD-ROM drive	Double-speed (Quad-speed or better recommended)
Display	Color monitor with 640 × 480 pixel resolution or greater (Thousands of colors recommended)
Browser	Web browser Microsoft Internet Explorer 4.0 or later recommended)

Contents

Safety Instructions

Important Safety Instructions	1
A Few Precautions	3
ENERGY STAR Compliance	5
Warnings, Cautions, and Notes	5

Taking a Look at Your Printer

Front view	6
Rear view	6

Chapter 1 Setting up the Printer with Your PC

Connecting the Printer to Your PC	1-2
Using the built-in parallel interface	1-2
Installing the Printer Software on Your PC	1-3
Printer software components	1-4
Installing on Windows 95, 98, NT 4.0, and Windows 2000	1-4
Upgrading to Windows 98	1-5
Printing on a Peer-to-Peer Network	1-6
For Windows 95 and 98	1-6
For Windows NT 4.0 and Windows 2000	1-10

Chapter 2 Setting up the Printer with Your Macintosh

Connecting the Printer to Your Macintosh	2-2
Using the built-in serial interface	2-2
Using the built-in parallel interface	2-4
Installing the Printer Software on Macintosh	2-5
Printer software components	2-5
Installing on Macintosh	2-6

Using the Chooser to select your printer	2-7
Setting up Your Printer on a Network	2-9

Chapter 3 Printing and Printer Management

Loading Paper	3-2
Loading roll paper	3-2
Loading cut sheet media	3-7
Loading cut sheet media longer than 483 mm (long edge of Super A3/B size)	3-7
Loading cut sheet with a length of A3, Super A3/B, and B3-10	
Printing From Your PC	3-11
Making the printer driver settings	3-12
Cancelling printing from your PC	3-16
Printing From Your Macintosh	3-16
Making the printer driver settings	3-16
Cancelling printing from your Macintosh	3-19

Chapter 4 Checking the Printer's Condition

Using Printer Utilities	4-2
Accessing the printer utilities	4-2
Printing the Nozzle Check Pattern	4-3
Cleaning the Print Heads	4-4
Aligning the Print Heads	4-6

Chapter 5 Using an Optional Interface Card

Available Optional Interface Cards	5-2
Installing the Optional Interface Card	5-2

Safety Instructions

Important Safety Instructions

Read all of these instructions before using your printer. Also be sure to follow all warnings and instructions marked on the printer.

- ❑ Do not block or cover the openings in the printer's cabinet.
- ❑ Do not insert objects through the slots. Take care not to spill liquid on the printer.
- ❑ Use only the type of power source indicated on the printer's label.
- ❑ Connect all equipment to properly grounded power outlets. Avoid using outlets on the same circuit as photocopiers or air control systems that regularly switch on and off.
- ❑ Avoid electrical outlets controlled by wall switches or automatic timers.
- ❑ Keep the entire computer system away from potential sources of electromagnetic interference, such as loudspeakers or the base units of cordless telephones.
- ❑ Do not use a damaged or frayed power cord.

- ❑ If you use an extension cord with the printer, make sure the total ampere rating of the devices plugged into the extension cord does not exceed the cord's ampere rating. Also, make sure the total ampere rating of all devices plugged into the wall outlet does not exceed the wall outlet's ampere rating.
- ❑ Do not attempt to service the printer yourself.
- ❑ Unplug the printer and refer servicing to qualified service personnel under the following conditions:

The power cord or plug is damaged; liquid has entered the printer; the printer has been dropped or the cabinet damaged; the printer does not operate normally or exhibits a distinct change in performance.

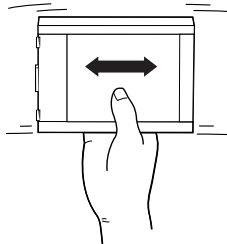
A Few Precautions

When using the printer

- ❑ Do not put your hand inside the printer or touch the ink cartridges during printing.
- ❑ Do not move the print heads by hand; otherwise you may damage the printer.
- ❑ Always turn the printer off using the Power button on the control panel. When this button is pressed, the Operate light flashes briefly then goes off. Do not unplug the printer or turn off the power to the outlet until the Operate light stops flashing.
- ❑ Before transporting the printer, make sure the print heads are in the home (far right) position, the ink cartridges are removed, and the ink valve locks are close. After transportation, open the locks as soon as possible.

When handling the ink cartridges

- ❑ Keep ink cartridges out of the reach of children and do not drink.
- ❑ If ink gets on your skin, wash it off with soap and water. If it gets in your eyes, flush them immediately with water.
- ❑ For best results, shake the ink cartridge gently before installing it.



**Caution**

Do not shake cartridges that have been installed previously.

- ❑ Once you install an ink cartridge, do not open the clamp or remove the cartridge except to replace it with a new one. The cartridge may become unusable otherwise.
- ❑ Do not use an ink cartridge beyond the date printed on the cartridge carton. For best results, use up the ink cartridges within six months of installation.
- ❑ For best results, use up the ink cartridge within six months of installation.
- ❑ Do not dismantle the ink cartridges or try to refill them. This could damage the print heads.

When choosing a place for the printer

- ❑ Place the printer on a flat, stable surface that is larger than the printer. The printer will not operate properly if it is tilted or at an angle.
- ❑ Avoid places subject to rapid changes in temperature and humidity. Also keep it away from direct sunlight, strong light, or heat sources.
- ❑ Avoid places subject to shocks and vibrations.
- ❑ Keep the printer away from the dusty areas.

- ❑ Place the printer near a wall outlet where the plug can be easily unplugged.

ENERGY STAR Compliance



As an ENERGY STAR Partner, EPSON has determined that this product meets the ENERGY STAR guidelines for energy efficiency.

The International ENERGY STAR Office Equipment Program is a voluntary partnership with the computer and office equipment industry to promote the introduction of energy-efficient personal computers, monitors, printers, fax machines, and copiers in an effort to reduce air pollution caused by power generation.

Warnings, Cautions, and Notes



Warnings must be followed carefully to avoid bodily injury.

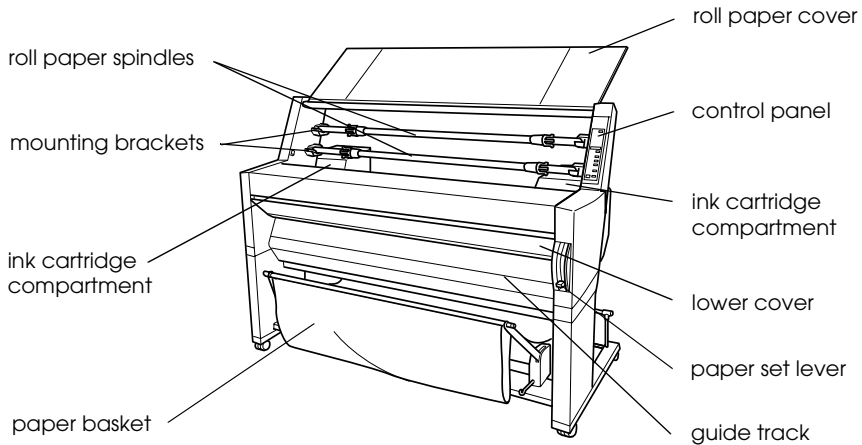


Cautions must be observed to avoid damage to your equipment.

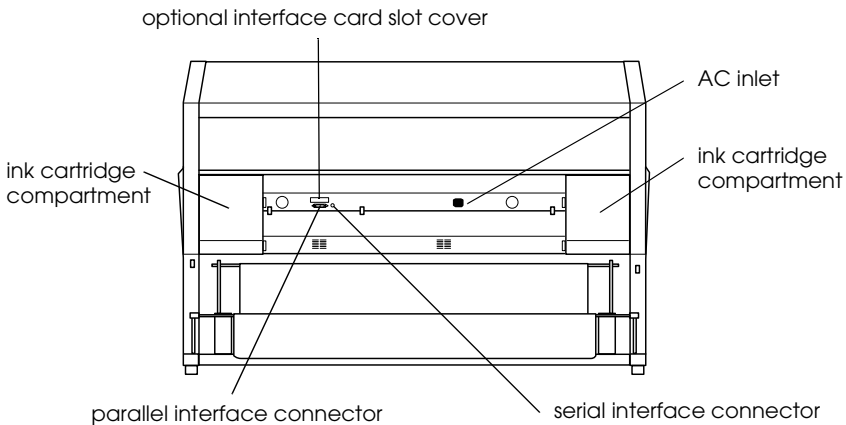
Notes contain important information and useful tips on the operation of your printer.

Taking a Look at Your Printer

Front view



Rear view



Setting up the Printer with Your PC

Connecting the Printer to Your PC	1-2
Using the built-in parallel interface	1-2
Installing the Printer Software on Your PC	1-3
Printer software components	1-4
Installing on Windows 95, 98, NT 4.0, and Windows 2000	1-4
Upgrading to Windows 98	1-5
Printing on a Peer-to-Peer Network	1-6
For Windows 95 and 98	1-6
For Windows NT 4.0 and Windows 2000	1-10

Connecting the Printer to Your PC

The method you use to connect the printer to your PC depends on whether you want to send print jobs directly to the printer using the printer's built-in parallel interface, or send print jobs to the printer over a network using an optional interface card. For information on using optional interface cards, see Chapter 5, "Using an Optional Interface Card."

To connect the printer to a Macintosh, see Chapter 2, "Setting up the Printer with Your Macintosh."

Using the built-in parallel interface

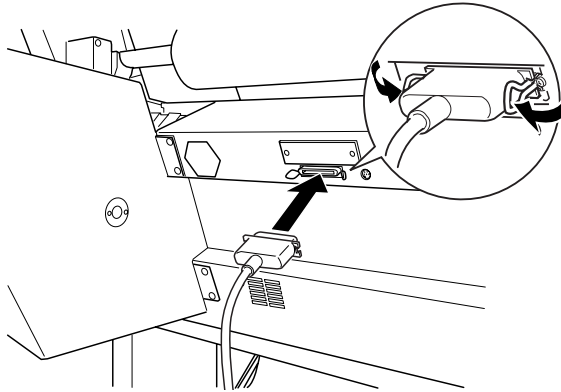
To use the printer's built-in parallel interface, you will need a shielded, twisted-pair cable. Then follow the steps below to connect the printer to your computer.

Note:

To connect the printer parallel port and USB port of your computer using the USB cable, you will need an additional conversion cable.

1. Make sure both the printer and computer are turned off.

2. Plug the cable connector securely into the printer's interface. Then squeeze the wire clips together until they lock into place on both sides. If your cable has a ground wire, connect it to the ground connector below the interface connector.



3. Plug the other end of the cable into the computer's USB port.

See the next section for instructions on installing the printer software. You must install the printer software before using your printer.

Installing the Printer Software on Your PC

After connecting the printer to your computer, you need to install the software included on the "Printer Software for EPSON Stylus PRO 9500" CD-ROM shipped with your printer.

Printer software components

Your printer software includes the following items:

- ❑ **Printer driver**
The printer driver is the software that runs your printer. With it, you can make settings such as Media Type, Print Quality, and Paper Size.
- ❑ **Utilities**
The Nozzle Check, Head Cleaning, and Print Head Alignment utilities help you keep your printer in top operating condition.
- ❑ **EPSON Status Monitor 3**
The EPSON Status Monitor 3 utility notifies you of printer errors and displays printer status information such as the amount of ink remaining. The Status Monitor also guides you when replacing ink cartridges.
- ❑ **Printer Status Page utility (for Windows 2000 only)**
The Printer Status Page Utility enables you to monitor the printer status and network settings over the Internet when using the Windows 2000 Internet Printing feature. To use this utility, you must obtain an optional network interface. See your network manual for more information.

Installing on Windows 95, 98, NT 4.0, and Windows 2000

Follow these steps to install your printer software:

Note:

If you wish to make a floppy disk version of the printer software included on your CD-ROM, insert the printer software CD-ROM, then click Create Floppy based printer driver/utility disks and follow the on-screen instructions.

1. Insert the software CD shipped with your printer in the CD-ROM drive. The Installer dialog box appears.
2. Double-click Install Printer Driver/Utility to start the printer software installation.
3. When the installation is complete, click OK.

Note:

- ❑ *If the New Hardware Found screen or any other Wizard appears when you turn on your computer, click Cancel and follow the steps above.*
- ❑ *Installation time varies depending on your computer.*

For information on opening and using the printer software, see “Printing From Your PC” on page 3-11. See also “Printer Software” in your *Online Guide*. If you use your printer on a network, see “Printing on a Peer-to-Peer Network” on page 1-6.

Upgrading to Windows 98

When you upgrade from Windows 95 to Windows 98, uninstall the current printer software, then install Windows 98 and the printer software as explained below:

1. Click Start, point to Settings, then click Control Panel.
2. Double-click the Printers icon in the Control Panel window.
3. Right-click your printer icon and click Delete in the dialog box.
4. Follow the messages on your screen.
5. Install the printer driver again. See “Installing on Windows 95, 98, NT 4.0, and Windows 2000” on page 1-4.

Printing on a Peer-to-Peer Network

For Windows 95 and 98, see below. For Windows NT 4.0 and Windows 2000, see “For Windows NT 4.0 and Windows 2000” on page 1-10.

For Windows 95 and 98

This section tells you how to set up your printer so that other computers on a network can use it.

First, you need to set up the printer as a shared printer on the computer to which the printer is connected. Then, you must signify the network path to the printer from each computer to use the printer, and install the printer software on those computers.

Note:

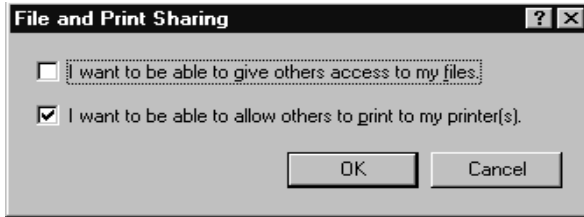
This section describes how to use your printer as a shared printer on a network. To connect your printer directly to a network without setting it up as a shared printer, consult your network administrator.

Setting up your printer as a shared printer

Follow these steps to share a printer connected directly to your computer with other computers on a network:

1. Click Start, point to Settings, then click Control Panel.
2. Double-click Network.
3. Click File and Print Sharing button.

4. Click the I want to be able to allow others to print to my printer(s) check box and click OK.

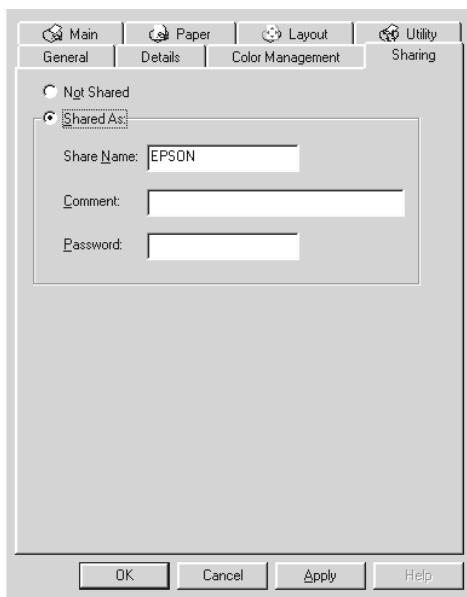


5. In the Network window, click OK.
6. In the Control Panel, double-click Printers.

Note:

- ❑ *If a dialog box requesting the Windows 95 or 98 CD-ROM appears, insert the CD-ROM in the CD-ROM drive, then follow the messages on the screen.*
 - ❑ *If a dialog box appears requesting you to restart your computer, do so. Then open the Printer folder, and continue from step 7.*
7. Select your printer, and choose Sharing from the File menu.

8. Click Shared As, enter the printer information as needed, then click OK.



Accessing the printer through a network

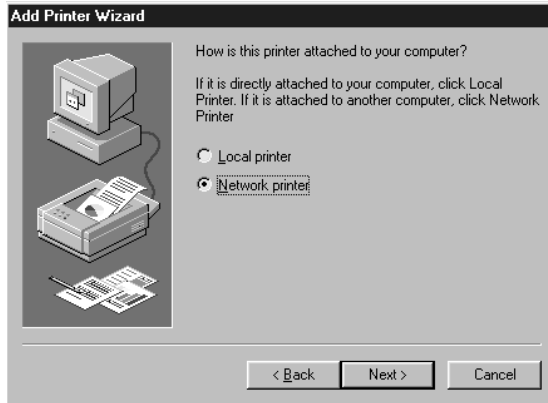
To access your printer from another computer on a network, follow these steps.

Note:

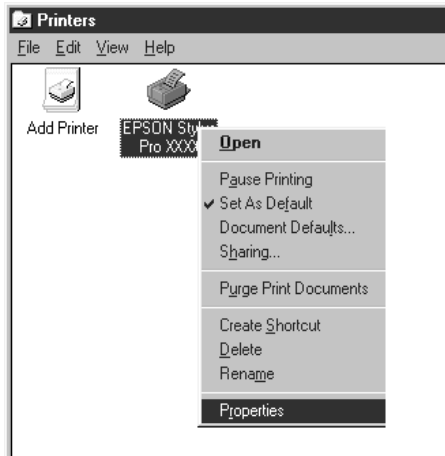
Your printer must be set up as a shared resource on the computer to which it is directly connected before you can access it from another computer. For instructions, see “Setting up your printer as a shared printer” on page 1-6.

1. On the computer you want to access the printer from, click Start, point to Settings, and click Printers.
2. Double-click the Add Printer icon.
3. The Add Printer Wizard screen appears. Click Next.

4. Click Network printer, then click Next.



5. Click Browse.
6. Double-click the icon of the computer that is directly connected to the printer. Then click the printer's icon.



7. Click OK and follow the messages on the screen.

For Windows NT 4.0 and Windows 2000

Note:

This section is written for small network users only. If you are on a large network and would like to share your printer, consult your network administrator.

This section tells you how to set up your printer so that other computers on the network can use it.

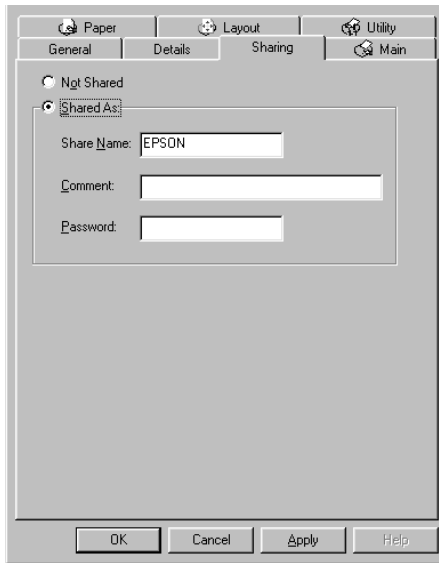
First, you need to set up the printer as a shared printer on the computer to which the printer is connected. Then, you must signify the network path to the printer from each computer to use the printer, and install the printer software on those computers.

Setting up your printer as a shared printer

Follow these steps to share a printer that is connected directly to your computer with others on a network.

1. Click Start, point to Settings, and click Printers.
2. Select your printer, then click Sharing on the File menu.

3. Click the Shared radio button and enter the Share Name.



4. Click OK.

Note:

Do not choose any drivers from the Alternate Drivers list.

Accessing the printer through a network

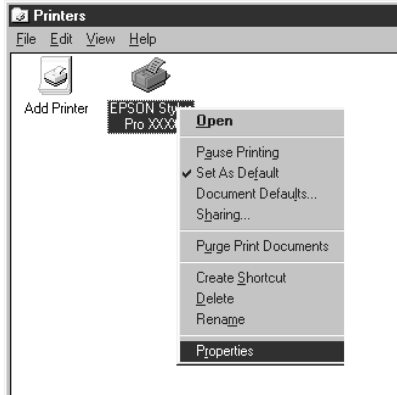
To access your printer from another computer on a network, follow these steps.

Note:

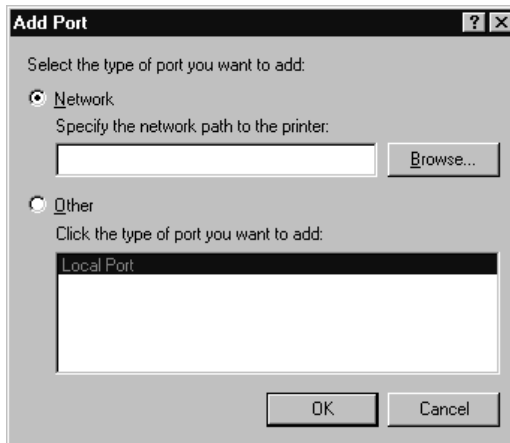
Your printer must be set up as a shared resource on the computer to which it is directly connected before you can access it from another computer. For instructions, see "Setting up your printer as a shared printer" on page 1-10.

1. Install the printer driver to the client computer from the software CD-ROM.

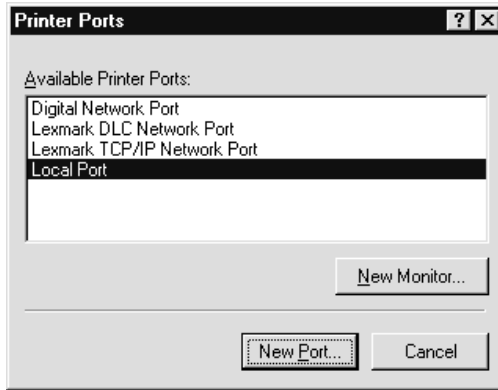
2. Open the Printer folder from the Control Panel, right-click your printer's icon, then open the Properties for your printer.



3. Click the Ports tab, then click Add Port.



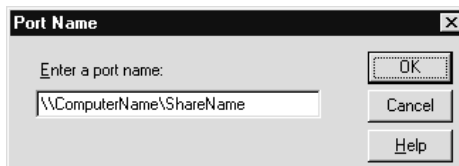
4. The following dialog appears. Select Local Port, then click New Port.



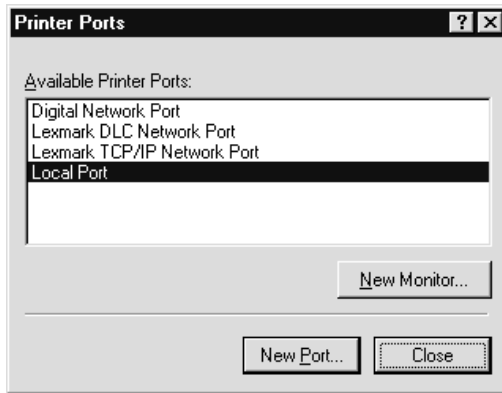
5. The following dialog appears. In the text box, type the following information:

\\name of computer that is connected to the printer\name of the shared printer

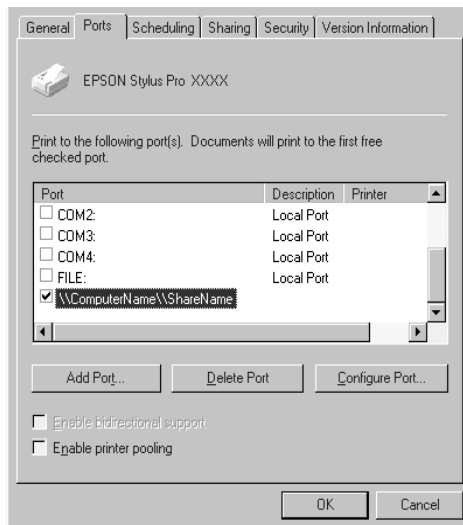
Then click OK.



6. In the Printer Ports dialog box, click Close to return to the Ports menu.



7. On the Ports menu, make sure that the new port is added and the check box is selected. Click OK to close the printer driver.



Setting up the Printer with Your Macintosh

Connecting the Printer to Your Macintosh	2-2
Using the built-in serial interface	2-2
Using the built-in parallel interface	2-4
Installing the Printer Software on Macintosh	2-5
Printer software components	2-5
Installing on Macintosh	2-6
Using the Chooser to select your printer	2-7
Setting up Your Printer on a Network	2-9

Connecting the Printer to Your Macintosh

The method you use to connect the printer to your Macintosh depends on whether you want to send print jobs directly to the printer using the printer's built-in serial interface, or send print jobs to the printer over a network using an optional interface card. For information on using an optional interface card, see Chapter 5, "Using an Optional Interface Card."

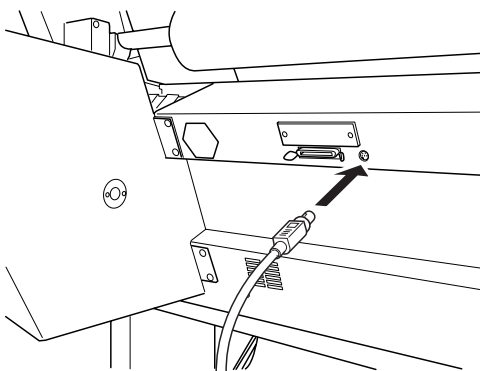
Using the built-in serial interface

To use the printer's built-in serial interface, you will need an Apple System Peripheral-8 cable. Then follow the steps below to connect the printer to your Macintosh.

Note:

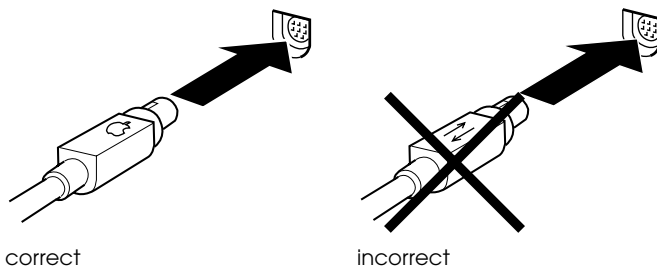
To connect the printer parallel port and USB port of your computer using the USB cable, you will need an additional conversion cable.

1. Make sure both your printer and Macintosh are turned off.
2. Connect one end of the interface cable to the serial connector on the back of the printer.



Note:

Use only an Apple System Peripheral-8 cable to connect the printer to your Macintosh. Do not use a LocalTalk cable.



3. Connect the other end of the interface cable to either the modem port or printer port on the Macintosh. The ports are marked with the following icons. (Some Macintosh PowerBook models have only one serial port.)



modem port



printer port

Note:

If your Macintosh has a built-in modem, connect the interface cable to the printer port.

4. Turn on the printer by pressing the Power button.
5. Turn on your Macintosh.

Now see “Installing the Printer Software on Macintosh” on page 2-5. You must install the printer software before using your printer.

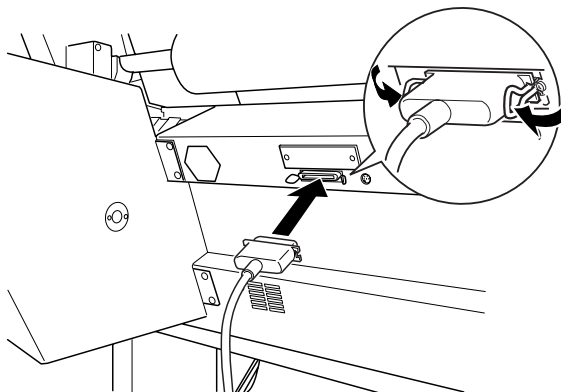
Using the built-in parallel interface

To use the printer's built-in parallel interface, you will need a shielded, USB Conversion cable. Then follow the steps below to connect the printer to your computer.

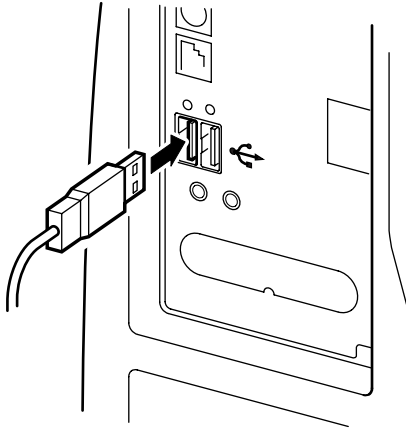
Note:

To connect the printer parallel port and USB port of your computer using the USB cable, you will need an additional conversion cable.

1. Make sure both the printer and computer are turned off.
2. Plug the cable connector securely into the printer's interface. Then squeeze the wire clips together until they lock into place on both sides. If your cable has a ground wire, connect it to the ground connector below the interface connector.



3. Plug the other end of the cable into the computer's USB port on the back of the Macintosh.



Now see “Installing the Printer Software on Macintosh” on page 2-5. You must install the printer software before using your printer.

Installing the Printer Software on Macintosh

After connecting the printer to your Macintosh, you are ready to install the printer software included in the “Printer Software for EPSON Stylus PRO 9500” CD-ROM shipped with your printer.

Printer software components

Your printer software includes the following items:

EPSON Printer Driver Package

- ❑ SPro 9500
This is the printer driver software that runs your printer. With it, you can make settings such as Media Type, Print Quality, and Paper Size.
- ❑ EPSON Monitor3
Monitors and manages background printing jobs. You must turn on background printing in the Chooser to use this utility.
- ❑ EPSON StatusMonitor
Keeps track of the current status of your printer, and alerts you when printer errors occur.
- ❑ Nozzle Check
Checks for clogged nozzles.
- ❑ Head Cleaning
Cleans the print heads to maintain the best print quality.
- ❑ Print Head Alignment
Adjusts the print heads so that vertical and horizontal lines are aligned.

Installing on Macintosh



Caution:

Turn off all virus protection programs before you install your printer software.

Follow these steps to install your printer software.

1. Insert the software CD-ROM shipped with your printer in the CD-ROM drive. The EPSON printer software disk opens automatically.

2. If a single Installer icon appears, double-click the icon. If separate folders containing installer icons for several languages appear, double-click the folder for your preferred language, then double-click the Installer icon inside it.
3. At the initial screen, click Continue. The following dialog box appears.

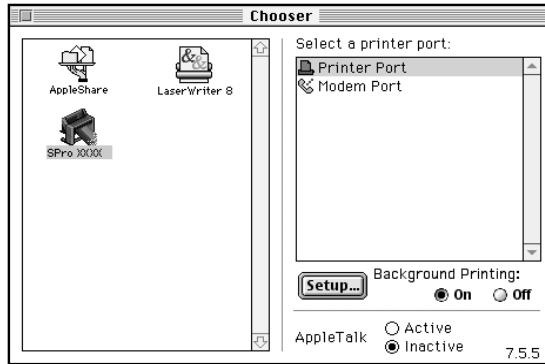


4. To install the printer software included on your printer software CD-ROM, make sure the Install Location box displays the correct disk drive, then click Install.
5. When a message appears informing you that the installation is complete, click Restart to restart your computer.

Using the Chooser to select your printer

After you have installed the printer software on your Macintosh, you need to open the Chooser and select your printer. You must select a printer the first time you use it or whenever you want to switch to another printer. Your Macintosh will always print using the last printer selected.

1. Select Chooser from the Apple menu. Then click your printer's icon and the port your printer is connected to.



2. Select the appropriate Background Printing radio button to turn background printing on or off.

With background printing on, you can use your Macintosh while it is preparing a document for printing. In order to use the EPSON Monitor3 utility to manage print jobs, background printing must be turned on.

3. Close the Chooser.

For information on opening and using the printer software, see "Printing From Your Macintosh" on page 3-16. If you use your printer on a network, see "Setting up Your Printer on a Network" on page 2-9.

Setting up Your Printer on a Network

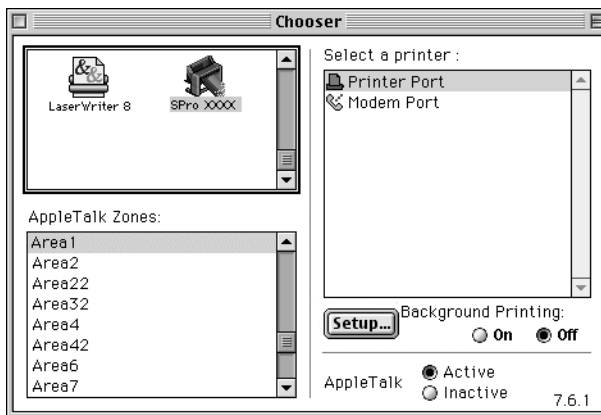
This section tells you how to set up the printer for use on an AppleTalk network. By setting up your local printer as a shared printer, it becomes connected to the network and can be used by other computers.

First, you need to setup the printer as a shared printer on the computer to which it is connected. Then, you must specify the network path to the printer from each computer that will use it, and install the printer software on those computers.

Setting up your printer as a shared printer

Follow these steps to share a printer connected directly to your computer with other computers on an AppleTalk network.

1. Turn on the printer.
2. Select Chooser from the Apple menu and click the printer's icon. Then select the port to which the printer is connected.



3. Click the Setup button. The following dialog box appears.



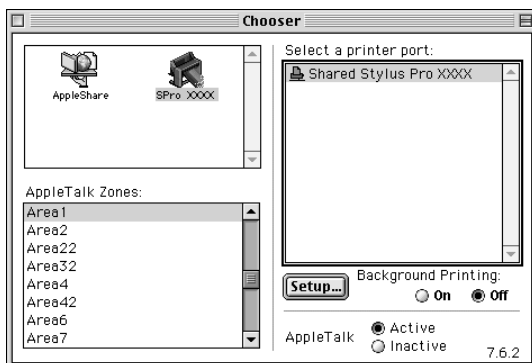
4. Select the Share this Printer check box, then type the printer name and password information as needed.
5. Click OK. The name of the shared printer appears in the port list in the Chooser.
6. Close the Chooser.

Accessing the printer through a network

To access your printer from another computer on the network, follow these steps.

1. Turn on your printer.

2. On each computer from which you want to access the printer, select **Chooser** from the Apple menu. Then click your printer's icon and select the printer port you want to use from the **Select a printer port** box on the right. You can only select from the printers connected to your current AppleTalk zone.



3. If the following dialog box appears, enter the password for the printer, then click **OK**.



4. Select the appropriate **Background Printing** option button to turn background printing on or off.
5. Close the **Chooser**.

Printing and Printer Management

Loading Paper	3-2
Loading roll paper	3-2
Loading cut sheet media	3-7
Loading cut sheet media longer than 483 mm (long edge of Super A3/B size)	3-7
Loading cut sheet with a length of A3, Super A3/B, and B.....	3-10
Printing From Your PC.....	3-11
Making the printer driver settings.....	3-12
Cancelling printing from your PC.....	3-16
Printing From Your Macintosh	3-16
Making the printer driver settings.....	3-16
Cancelling printing from your Macintosh	3-19



Loading Paper

Loading roll paper

To load the roll paper, follow the steps below.

1. Open the roll paper cover. Make sure that the roll paper is attached to the printer properly.

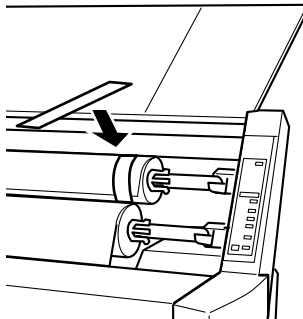


Caution:

Keep your fingers off the printable surface of the media, as fingerprints may reduce printout quality. Whenever possible, use gloves to load paper into the printer.

Note:

If two roll paper spindles are attached to the printer, keep the unused roll wound up using the roll paper belt, to avoid paper jams. To secure the roll paper, tap the end of the roll paper belt lightly on the roll paper. To remove the roll paper belt from the roll paper, simply take off the belt.



2. Make sure that the printer is on.
3. Press the Paper Source button repeatedly until the Roll Auto Cut light or Roll Cutter Off light is on.

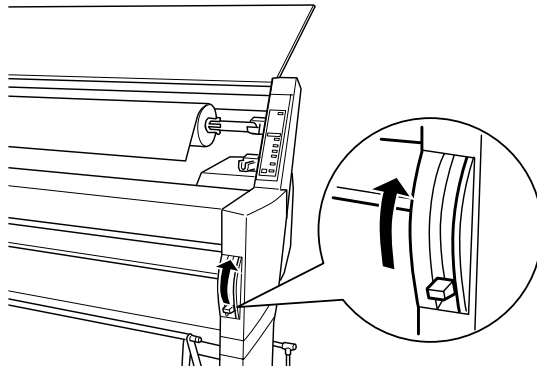
**Caution:**

If you are loading thick roll paper, select Roll Cutter Off. Paper that is too thick may damage the paper cutter.

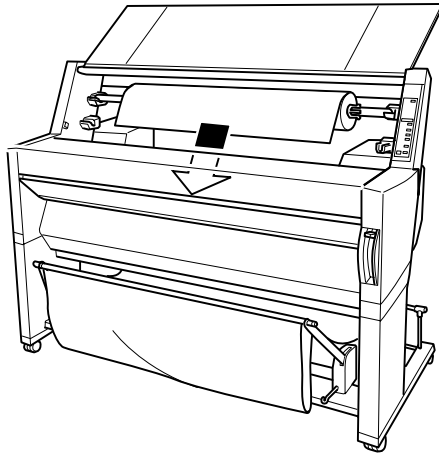
4. Make sure the Operate light or Pause light is not flashing, then pull the paper set lever all the way up. The Paper Out light turns on and LOAD PAPER appears on the LCD panel.

**Caution:**

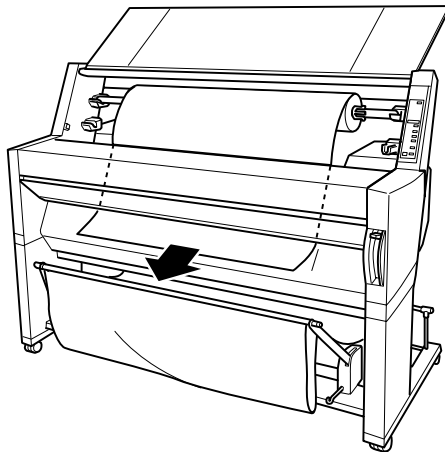
Do not move the paper set lever up while the Operate light or Pause light is flashing. Otherwise, damage may occur.



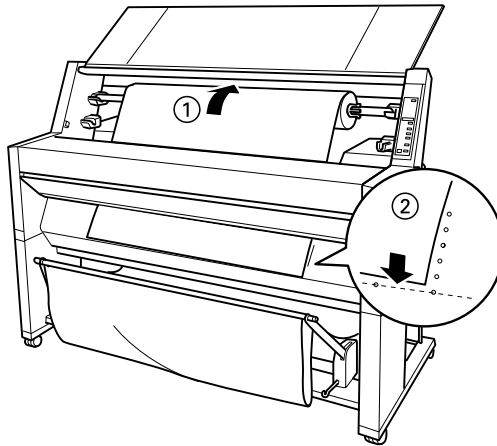
5. Load the paper into the paper insertion slot.



6. Pull the paper down through the paper insertion slot a small way.



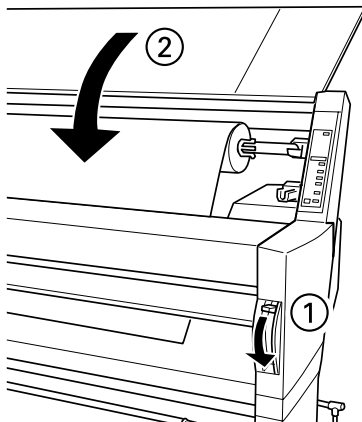
7. Roll back the roll paper to remove the slack. Make sure that the bottom edge of the paper is positioned straightly and in line with the rows of punch holes.



8. Push the paper set lever all the way down, then close the roll paper cover. `PRESS PAUSE BUTTON` appears.

Note:

If the Roll Auto Cut light is on, and the bottom edge of the roll paper was not cut properly after the previous print job, press the Cut/Eject button to recut the edge.



9. Press the Pause button.

The print heads move and the paper feeds into the printing position. **READY** appears on the LCD panel.

Note:

Even if you do not press the Pause button, the print heads move and paper feeds into the printing position automatically. **READY** appears on the LCD panel.

Now you are ready to print on roll paper. Make the printer driver settings, then send the print job. See “Printing From Your PC” on page 3-11 or “Printing From Your Macintosh” on page 3-16.

Note:

Allow time for the ink to dry thoroughly after printing to ensure the printout quality.

Loading cut sheet media

To load cut sheet media longer than 483 mm long edge of Super A3/B size), see the next section. To load paper with a length of A3, Super A3/B, B, see “Loading cut sheet with a length of A3, Super A3/B, and B” on page 3-10.

If you are printing on thick paper (0.5 to 1.5 mm), see your *Online Guide*.

Loading cut sheet media longer than 483 mm (long edge of Super A3/B size)

To load cut sheet media longer than 483 mm, follow the steps below.

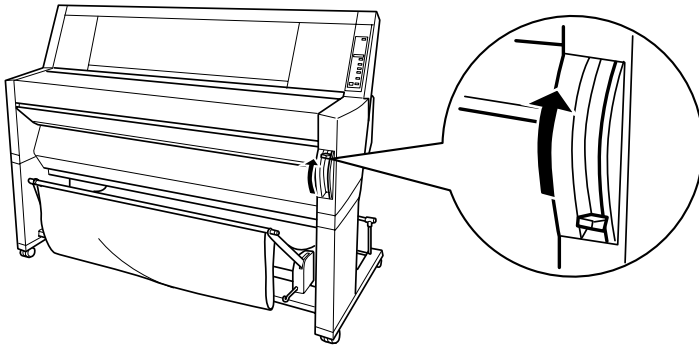


Caution:

As much as possible, keep your fingers off the printable surface of the media, as fingerprints may reduce printout quality.

1. Make sure that the printer is on and the roll paper cover is closed.
2. Press the Paper Source button repeatedly until the Sheet light comes on.

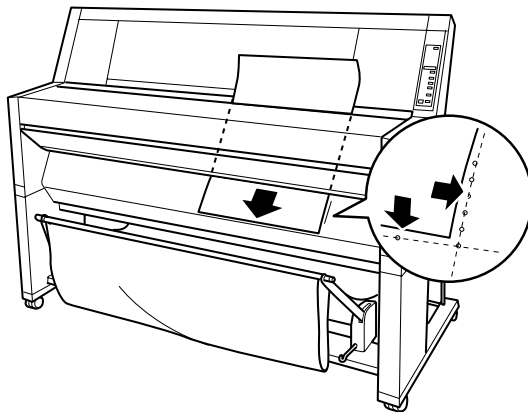
3. Make sure the Operate light and Pause light is not flashing, then pull the paper set lever all the way up. The Paper Out light turns on and LOAD PAPER appears on the LCD panel.



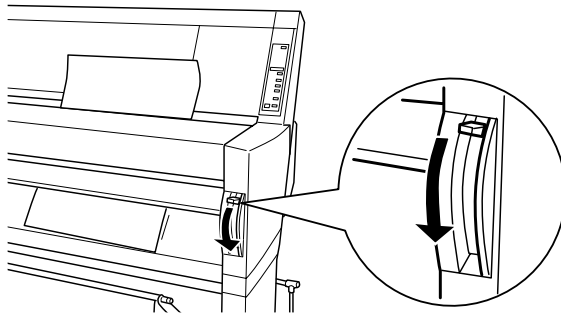
Caution:

Do not move the paper set lever while the Operate light or Pause light is flashing. Doing so may damage the printer.

4. Load the sheet into the paper insertion slot until it comes out below. Make sure that the right and bottom edges of the paper are straight and in line with the rows of punch holes.



5. Push the paper set lever all the way down, **PRESS PAUSE BUTTON** appears.



6. Press the Pause button.

The print heads move and the sheet feeds automatically into the printing position. **READY** appears on the LCD panel.

Note:

*Even if you do not press the **PAUSE** button, the print heads move and paper feeds into the printing position automatically. **READY** appears on the LCD panel.*

Now you are ready to print on cut sheet media. Make the printer driver settings, then send the print job. See “Printing From Your PC” on page 3-11 or “Printing From Your Macintosh” on page 3-16.

Note:

Allow time for the ink to dry thoroughly after printing to ensure the printout quality.

Loading cut sheet with a length of A3, Super A3/B, and B

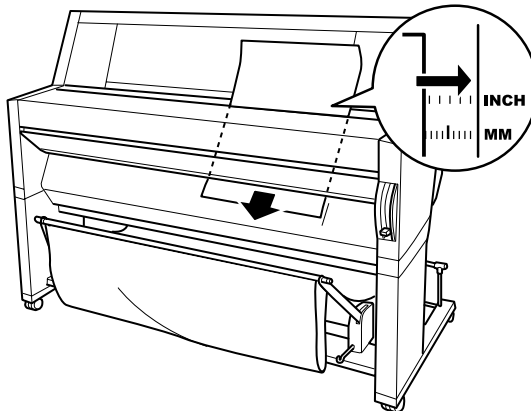
To load cut sheet media with a length of A3, Super A3/B, and B, follow the steps below.



Caution:

As much as possible, keep your fingers off the printable surface of the media, as fingerprints may reduce printout quality.

1. Make sure that the printer is on and the roll paper cover is closed.
2. Press the Paper Source button repeatedly until the Sheet light comes on.
3. Make sure that the paper set lever is all the way up. Then load the sheet into the paper insertion slot until it meets resistance. Make sure that the right edge of the paper is straight and in line with the right edge of the scale on the roll paper cover. **PRESS PAUSE BUTTON** appears on the LCD panel.



4. Press the PAUSE button.
The print heads move and the sheet automatically feeds into the printing position. READY appears on the LCD panel.

Now you are ready to print on the cut sheet media. Make the printer driver settings, then send a print job. See “Printing From Your PC” on page 3-11 or “Printing From Your Macintosh” on page 3-16.

When printing is complete, the printer supports the printed media, and PAPER OUT is displayed on the LCD panel. To remove the paper, hold it while pressing the Paper Feed button. The paper can be removed from the printer.

Printing From Your PC

After loading the paper, you are ready to print your document from your PC.

Note:

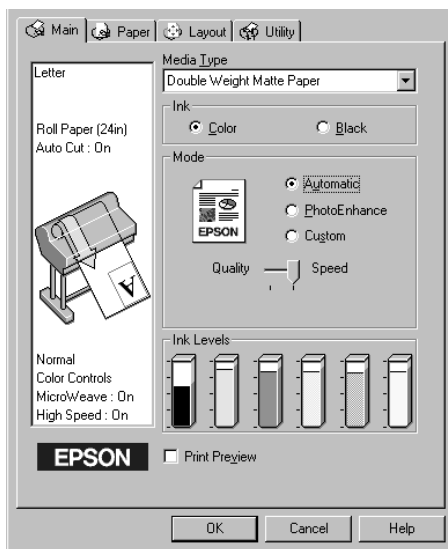
To ensure the print quality, you may need to check the printer's condition before you start printing. See Chapter 4, “Checking the Printer's Condition.”

Making the printer driver settings

To make the basic settings to print your documents, access the Main menu and Paper menu in the printer driver. In the Paper menu, you can set particular settings for printing on roll paper; Auto Rotate, Auto Cut, and Print Page Line.

For details about the printer software, see online help by pressing the Help button in the driver settings window.

1. Click Print on the File menu. The Print dialog box appears.
2. Make sure your printer is selected and then click Properties, or Options. You may need to click a combination of these buttons. The driver settings window appears.



3. Click the Main tab to display the Main menu.
4. Select the media you loaded in the printer from the Media Type list.

Note:

The Media Type setting determines what other settings are available, so you should always make this setting first.

5. In the Ink box, select Color to print in color, or Black to print in black and white.
6. Make sure the Automatic radio button in the Mode box is selected.

Note:

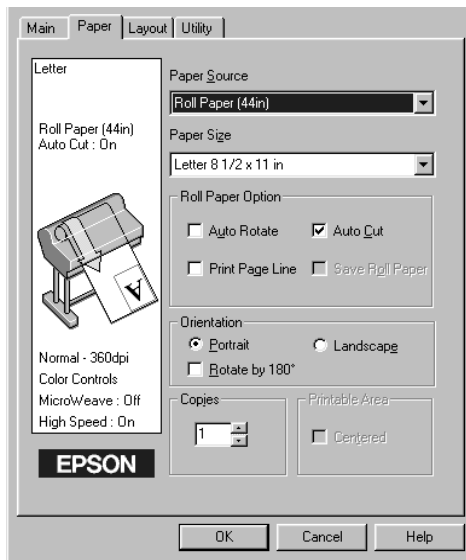
When Automatic is selected, the printer driver takes control of all detailed settings based on the current Media Type setting and Ink setting.

7. Adjust Speed and Quality in the Mode box if a slider appears. Drag the slider left or right depending on which is more important. This setting is usually automatically decided in accordance with your Media Type setting.

Note:

Depending on the Media Type you choose, a slider appears in the Mode box.

- Click the Paper tab to display the Paper menu.



- Select the paper size you loaded in the printer from the Paper Size list.

Note:

Most Windows applications feature paper size settings that override similar settings in the printer driver.

- Select the type of paper you loaded in the printer from the Paper Source list.
- When roll paper is used, set the Roll Paper Settings as required.

Auto Rotate

If your document length is shorter than the printable width of the roll paper, the document will be turned automatically by 90 degrees and printed crosswise when you select Auto Rotate. You can save paper by using this function.

Auto Cut

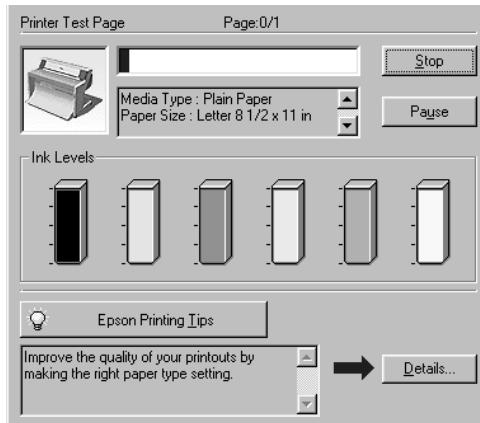
Roll paper will be cut automatically after printing one page when you select Auto Cut.

Print Page Line

Page lines will be printed on the right side and below the document for manual cutting when you select Print Page Line.

12. Make settings for Copies, Orientation, Printable Area, and Reduce/Enlarge boxes.
13. Click the OK button at the bottom of the window. You return to the Print dialog box (or a similar dialog box).
14. Click Close, OK, or Print to print. You may need to click a combination of these buttons.

While printing, the EPSON Progress Meter will appear, showing the printing progress and the status of your printer.



For details, see “Printer Software” in your *Online Guide*.

Cancelling printing from your PC

To cancel the printing in progress, press the Stop button on the EPSON Progress Meter.

You can also pause or restart printing. To pause printing, press the Pause button. To resume printing, press this button again.



Caution:

When you stop printing in progress, you may need to start printing again from the beginning for best result. Otherwise misalignment or banding may appear on the printed image.

Printing From Your Macintosh

After loading the paper, you are ready to print your document from your Macintosh.

Note:

To ensure the print quality, you may need to check the printer's condition before you start printing. See Chapter 4, "Checking the Printer's Condition."

Making the printer driver settings

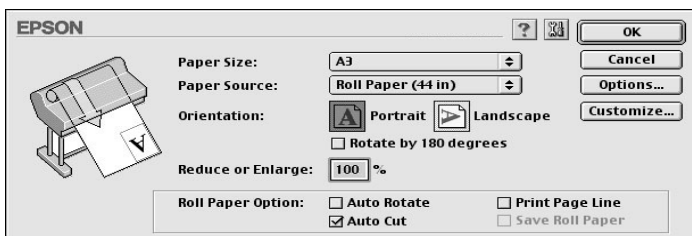
To make the printer driver settings, follow the steps below.

For details about the printer software, see online help by pressing the Help (marked with "?") icon button in the driver setting dialog boxes.

Note:

While many Macintosh applications override the settings made in the printer driver, some do not, so you must verify the settings to get the results you expect.

1. Choose PAGE SETUP from the File menu. This brings up the Page Setup dialog box shown below.



2. Select the paper size you loaded in the printer from the Paper Size list.
3. Select the type of paper you loaded in the printer from the Paper Source list.
4. When roll paper is used, set the Roll Paper Settings as required.

Auto Rotate

If your document length is shorter than the printable width of the roll paper, the document will be turned automatically by 90 degrees and printed crosswise when you select Auto Rotate. You can save paper by using this function.

Auto Cut

Roll paper will be cut automatically after a document is printed when you select Auto Cut.

Print Page Line

Page lines will be printed on the right side and below the document for manual cutting when you select Print Page Line.

Save Roll Paper (available only for Roll Paper (Banner))

Select this check box when you wish to save roll paper. The blank portion of the last page of your document is not fed through the printer.

5. Make settings for Orientation, Reduce or Enlarge, and Printable Area.
6. After making your settings, click the OK button to close the Page Setup dialog box.

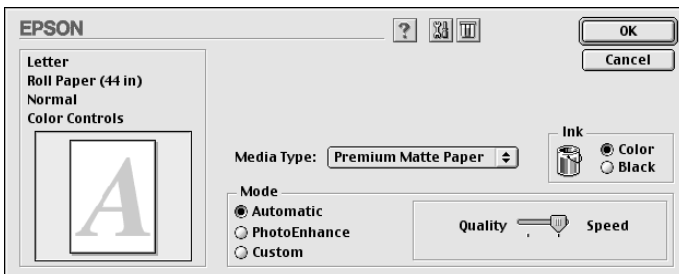
Note:

You cannot print from the Page Setup dialog box. You can only print from the Print dialog box.

7. Choose Print from the File menu. The Print dialog box appears as shown below.

Note:

You can also open the Print dialog box by pressing the Options button in the Page Setup dialog box.



8. Select the media you loaded in the printer from the Media Type list.

Note:

The Media Type setting determines what other settings are available, so you should always make this setting first.

9. In the Ink box, select **COLOR** to print in color, or **Black** to print in black and white.
10. Make sure the Mode option is set to **Automatic**.

Note:

When Automatic is selected, the printer driver takes control of all detailed settings based on the current Media Type setting and Ink settings.

11. Adjust **Speed** and **Quality** in the Mode box if a slider appears. Drag the slider left or right depending on which is more important. This setting is usually automatically decided in accordance with your Media Type setting.

Note:

Depending on the Media Type you choose, a slider appears in the Mode box.



12. Be sure to make the settings for **Copies** and **Pages**, then click the **Print** button to start printing.

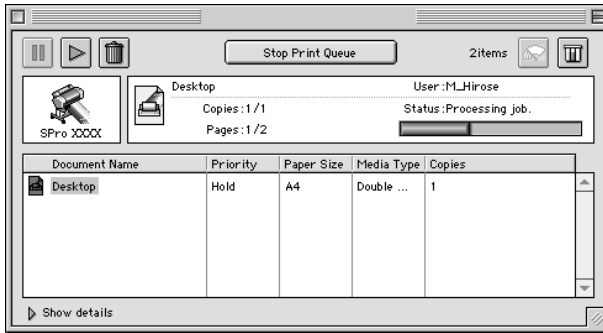
Cancelling printing from your Macintosh

When background printing is on

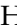
1. Press the **Power** button to turn off the printer.
2. Select **EPSON Monitor3** from the application menu.



3. Click the  button, then click the  stop button to cancel the print job.



When background printing is off

1. Press the Power button to turn off the printer.
2. Hold down the  key on your keyboard and press the [.] period key to cancel the print job.

Chapter 4

Checking the Printer's Condition

Using Printer Utilities	4-2
Accessing the printer utilities	4-2
Printing the Nozzle Check Pattern	4-3
Cleaning the Print Heads	4-4
Aligning the Print Heads	4-6

Using Printer Utilities

To ensure the print quality, you may need to check the printer's condition using the following utilities from the printer software.

Note:

You can also check from the printer's control panel. See "The Control Panel" in your Online Guide.

- Nozzle Check
- Print Head Cleaning
- Print Head Alignment


Accessing the printer utilities

To access the printer utilities, follow the steps below.

For Windows

1. Double-click the My Computer icon, then double-click the Printers folder.
2. For Windows 95 and 98, right-click your Printer icon, then click Properties. For Windows NT 4.0, right-click your Printer icon, then click Document Defaults. For Windows 2000, right-click your printer icon, then click Printing Preferences. You see the printer software window.

For Macintosh

Click Print on the File menu of your application. Then click the  utility icon in the Print dialog box.

Printing the Nozzle Check Pattern

You can check the print head nozzles from your computer with the Nozzle Check utility in the printer software.

Note:

Do not start the Nozzle Check utility while printing is in progress; otherwise, your printout may be marred.

Follow the steps below:

1. Make sure the printer is turned on and paper is loaded in the printer. (A3 or wider paper)
2. Access the printer software. See “Accessing the printer utilities” on page 4-2.
3. Click the Nozzle Check button.
4. Follow the messages on your screen.

The printer prints an operational check page including firmware (ROM) version information and a nozzle check pattern. The nozzle check pattern will resemble one of the two samples shown below:

Nozzle Check Pattern

Good condition: Print heads do not require cleaning.



Poor condition: Print heads require cleaning.



Note:

Actual tests are printed in color.

If any segments of printed lines are missing in your nozzle check pattern, ink nozzles are clogged and the print heads require cleaning.



Caution:

Make sure that the nozzle check pattern printing is complete before you start printing. Otherwise, print quality may decline.

Cleaning the Print Heads

You can execute the head clean from your computer using the Head Cleaning utility in the printer software, as explained in the following steps.

Note:

- ❑ *Print head cleaning uses ink. To avoid wasting ink, clean the print heads only if print quality declines.*
- ❑ *Use the Nozzle Check utility to confirm that the print heads need to be cleaned, as this uses only a little ink.*
- ❑ *When an Ink Out light is flashing (ink low) or on (ink out) in the printer, you cannot clean the print heads before replacing the appropriate ink cartridge first.*
- ❑ *Do not start the Head Cleaning or Nozzle Check utilities while printing is in progress; otherwise, your printout may be marred.*

Follow the steps below:

1. Make sure the lights on the control panel do not indicate that ink is low or ink is out.
2. Access the printer software. See “Accessing the printer utilities” on page 4-2.

3. Click the Head Cleaning button.
4. Follow the messages on your screen.

The Pause light of the printer flashes during the cleaning cycle, which takes about one minute to complete.



Caution:

Never turn off the printer until the cleaning cycle is finished and the Pause light has stopped flashing. Doing so may damage the printer.

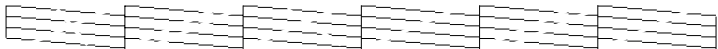
5. When the Pause light is on, click Print nozzle check pattern (Windows) or the Confirmation button (Macintosh) in the Head Cleaning dialog box, or print a few lines from a document, to confirm that the heads are clean.

Nozzle Check Pattern

Good Condition: Print head cleaning was successful.



Poor condition: Print heads require further cleaning.



Note:

Actual tests are printed in color.

In the check pattern, if you find that segments are still missing from the test lines, you may need to repeat head cleaning and print the nozzle check pattern again.

If print quality does not improve even after repeating this procedure several times, turn the printer off leave it alone overnight. Then, clean the head again.

If print quality remains a problem after replacing the ink cartridges, contact your dealer.

Aligning the Print Heads

You can align the print heads using the Print Head Alignment utility in the printer software.

Note:


- ❑ *Do not start the Print Head Alignment utility while printing is in progress; otherwise, your printout may be marred.*
- ❑ *Alignment pattern printing requires 0.5 m roll paper.*

Follow the steps below:

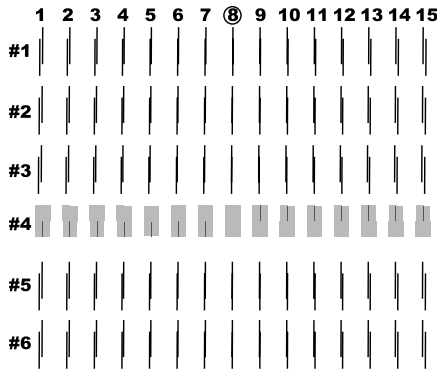
1. Make sure the printer is turned on, and the EPSON special roll paper you plan to use is loaded in the printer. (297 mm or wider roll paper)

Note:

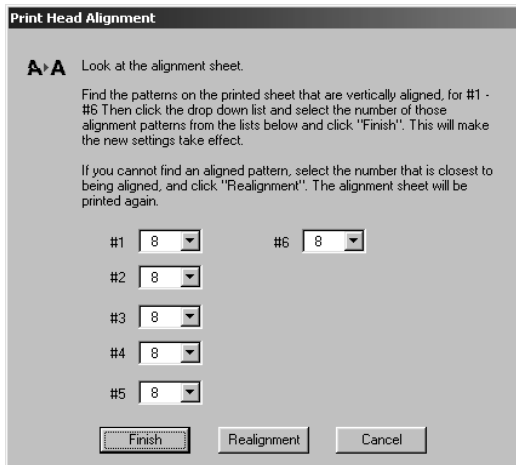
If you plan to use paper other than EPSON special paper, you may need to align the print heads using the SelectType settings. See "Paper Handling" in your Online Guide.

2. Access the printer software. See "Accessing the printer utilities" on page 4-2, depending on your system.
3. Click the Utility tab in the printer software window (Windows) or the  utility icon in the Print or Page Setup dialog box (Macintosh), then click the Print Head Alignment button.
4. Follow the messages on your screen. The printer prints the head alignment patterns.

5. Choose the set number that has the smallest gap in each alignment pattern. In the example below, set number 8 has the smallest gaps.



6. Select the number you chose in step 5 (for example, number 8), then click Finish.



Note:
If the set with the smallest gap is unclear and cannot be selected, click the Realignment button and repeat from step 5.

Chapter 5

Using an Optional Interface Card

Available Optional Interface Cards	5-2
Installing the Optional Interface Card	5-2

Available Optional Interface Cards

The optional Ethernet Interface Cards shown below let you use your printer on a network. The Ethernet card automatically detects the protocols on your network, so you can print from Windows 95, 98, NT 4.0, and Windows 2000, and Macintosh on an AppleTalk network.

Type B Ethernet Interface Card (100BASE-TX)	C82362*
Type B Ethernet Interface Card (100BASE-TX)	C82363*

Note:

The asterisk in the product number is a substitute for the last digit which varies by country.

Installing the Optional Interface Card

To install an optional interface card, follow these steps:

Note:

Before you install the optional interface card, see the documentation that comes with the card for setup information.

1. Make sure the printer is turned off.
2. Make sure that the power cord is unplugged from the electrical outlet.



Warning:

Do not install the interface card when the printer is connected to an electrical outlet, as damage may occur.

3. Disconnect the existing interface cable, if necessary.

4. Use a cross-head screwdriver to remove the two screws securing the shield plate to the optional interface slot; then lift off the plate. Be sure to keep the screws; you may need to use them again when you re-install the shield plate.
5. Slide the interface card along the slots on both sides of the interface compartment. Push it in firmly to fully insert the connector at the rear of the interface card into the printer's internal socket.
6. Secure the interface card in the slot with the two screws included with the interface card.
7. Connect a compatible interface cable to the interface card and to your computer. If the cable has a ground wire, secure it with one of the screws.

Also, if you are using more than one computer, reconnect the other interface cable.

8. Make sure the printer is turned off. Then plug in the power cord.

To remove an interface card, follow the above steps in reverse order.

