

# Where to Find Information


## Daily Use guide

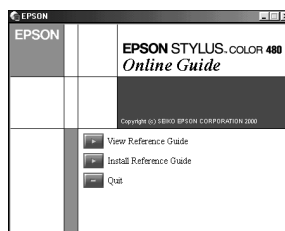
"Setup Guide" of this guide will help you set up and begin using your printer. It includes information on setting up your printer and installing the printer software. And this guide provides information on normal printer operation. It also contains troubleshooting tips and customer support information.

## Reference Guide included on the CD-ROM

The Reference Guide contained on the CD-ROM included with your printer provides detailed information about printer software settings, printing on special paper, maintenance, and problem solving.

### *Opening the Reference Guide:*

Insert the printer software CD in the CD-ROM drive. Select Online Guide from the Installer dialog box and click . Then click View Reference Guide to open the guide.



### *Installing the Reference Guide:*

To install the Reference Guide on your hard disk, click Install Reference Guide and follow the on-screen instructions. When installation is complete, an ESC480 Guide icon appears in the EPSON folder. Double-click the icon to open the guide.

### **Note:**

*If your hard disk does not have enough space to install the Reference Guide, view it directly from the CD.*

All rights reserved. No part of this publication may be reproduced, stored in a retrieval system, or transmitted in any form or by any means, electronic, mechanical, photocopying, recording, or otherwise, without the prior written permission of SEIKO EPSON CORPORATION. The information contained herein is designed only for use with this EPSON printer. EPSON is not responsible for any use of this information as applied to other printers.

Neither SEIKO EPSON CORPORATION nor its affiliates shall be liable to the purchaser of this product or third parties for damages, losses, costs, or expenses incurred by the purchaser or third parties as a result of: accident, misuse, or abuse of this product or unauthorized modifications, repairs, or alterations to this product, or (excluding the U.S.) failure to strictly comply with SEIKO EPSON CORPORATION's operating and maintenance instructions.

SEIKO EPSON CORPORATION shall not be liable for any damages or problems arising from the use of any options or any consumable products other than those designated as Original EPSON Products or EPSON Approved Products by SEIKO EPSON CORPORATION.

SEIKO EPSON CORPORATION shall not be held liable for any damage resulting from electromagnetic interference that occurs from the use of any interface cables other than those designated as EPSON Approved Products by SEIKO EPSON CORPORATION.

EPSON is a registered trademark and EPSON Stylus is a trademark of SEIKO EPSON CORPORATION.

Microsoft and Windows are registered trademarks of Microsoft Corporation.

*General Notice: Other product names used herein are for identification purposes only and may be trademarks of their respective owners. EPSON disclaims any and all rights in those marks.*

Copyright © 2000 by SEIKO EPSON CORPORATION, Nagano, Japan.



Printed on Recycled Paper.

---

# Contents

<b><i>Safety Instructions</i></b> .....	<b>1</b>
Important Safety Instructions .....	1
A Few Precautions .....	2
ENERGY STAR Compliance .....	4
Warnings, Cautions, and Notes .....	4
<b><i>Setup Guide</i></b> .....	<b>5</b>
Checking the Package Contents .....	5
Unpacking the printer .....	6
Attaching the Paper Support .....	6
Connecting the Printer .....	7
Installing the Printer Software .....	7
Installing and Checking the Ink Cartridges .....	9
Printing Your First Page .....	12
<b><i>Printer Parts and Functions</i></b> .....	<b>15</b>
Printer Parts .....	15
<b><i>Loading Special Paper, Envelopes, and Other Media</i></b>	<b>17</b>
Loading Special Paper and Other Media .....	17
Loading Envelopes .....	19
<b><i>Using the Printer Software</i></b> .....	<b>21</b>
Printer Software Introduction .....	21
Making Changes to Printer Settings .....	22
Previewing your printout .....	30
Getting Information Through Online Help .....	33
<b><i>Checking Printer Status</i></b> .....	<b>35</b>
Using EPSON Status Monitor 3 .....	35

*Replacing Ink Cartridges* ..... **37**

*Maintenance* ..... **41**

Checking the Print Head Nozzles ..... 41

Cleaning the Print Head ..... 42

Aligning the Print Head ..... 43

*Troubleshooting* ..... **45**

Error Messages ..... 45

Typical Problems and Solutions ..... 45

Cancelling Printing ..... 47

Where to Get Help ..... 48

*Consumable Products* ..... **49**

Consumable Products ..... 49

*Printer Specifications* ..... **51**

System Requirements ..... 51

# ***Safety Instructions***

---

## ***Important Safety Instructions***

Read all of these instructions before using your printer. Also, be sure to follow all warnings and instructions marked on the printer.

- ❑ Do not block or cover the openings in the printer's cabinet. Do not insert objects through the slots.
- ❑ Take care not to spill liquid on the printer.
- ❑ Use only the type of power source indicated on the printer's label.
- ❑ Connect all equipment to properly grounded power outlets. Avoid using outlets on the same circuit as photocopiers or air control systems that regularly switch on and off.
- ❑ Avoid electrical outlets controlled by wall switches or automatic timers.
- ❑ Keep the entire computer system away from potential sources of electromagnetic interference, such as loudspeakers or the base units of cordless telephones.
- ❑ Do not use a damaged or frayed power cord.
- ❑ Unplug the printer's power cord from the electrical outlet when you do not use the printer for a long period of time.
- ❑ If you use an extension cord with the printer, make sure the total ampere rating of the devices plugged into the extension cord does not exceed the cord's ampere rating. Also, make sure the total ampere rating of all devices plugged into the wall outlet does not exceed the wall outlet's ampere rating.

- ❑ Do not attempt to service the printer yourself.
- ❑ Unplug the printer and refer servicing to qualified service personnel under the following conditions:

The power cord or plug is damaged; liquid has entered the printer; the printer has been dropped or the cabinet damaged; the printer does not operate normally or exhibits a distinct change in performance.

---

## ***A Few Precautions***

Take note of the following when using the printer, handling the ink cartridges, or choosing a location for the printer.

### ***When using the printer***

- ❑ Do not put your hand inside the printer or touch the ink cartridges during printing.
- ❑ Do not move the print head by hand; otherwise, you may damage the printer.
- ❑ Before transporting the printer, make sure the print head is in the home (far right) position and the ink cartridges are in place.

### ***When handling the ink cartridges***

- ❑ Keep ink cartridges out of the reach of children. Do not allow children to drink from or otherwise handle the cartridges.
- ❑ If ink gets on your skin, wash it off with soap and water. If it gets in your eyes, flush them immediately with water.
- ❑ Do not shake an ink cartridge; this can cause leakage.

- ❑ Install the ink cartridge immediately after you remove it from its package. Leaving the cartridge unpacked for a long time before use may result in reduced print quality.
- ❑ Once you install an ink cartridge, do not open the clamp or remove the cartridge except to replace it with a new one. Otherwise, the cartridge may become unusable.
- ❑ Do not use an ink cartridge beyond the date printed on the cartridge carton. For best results, use up the ink cartridges within six months of installing them.
- ❑ Do not dismantle the ink cartridges or try to refill them. This could damage the print head.

### ***When choosing a place for the printer***

- ❑ Place the printer on a flat, stable surface that extends beyond the printer base in all directions. The printer will not operate properly if it is tilted or at an angle.
- ❑ Leave enough space in front of the printer for paper to be ejected smoothly.
- ❑ Avoid places subject to rapid changes in temperature and humidity. Also, keep the printer away from direct sunlight, strong light, or heat sources.
- ❑ Avoid places subject to shocks and vibrations.
- ❑ Leave enough room around the printer to allow for sufficient ventilation.
- ❑ Place the printer near a wall outlet where the plug can be easily unplugged.
- ❑ Avoid places subject to dust.

---

## **ENERGY STAR Compliance**



As an ENERGY STAR Partner, EPSON has determined that this product meets the ENERGY STAR guidelines for energy efficiency.

The International ENERGY STAR Office Equipment Program is a voluntary partnership with the computer and office equipment industry to promote the introduction of energy-efficient personal computers, monitors, printers, fax machines, and copiers in an effort to reduce air pollution caused by power generation.

---

## **Warnings, Cautions, and Notes**



### **Warnings**

*must be followed carefully to avoid bodily injury.*



### **Cautions**

*must be observed to avoid damage to your equipment.*

### **Notes**

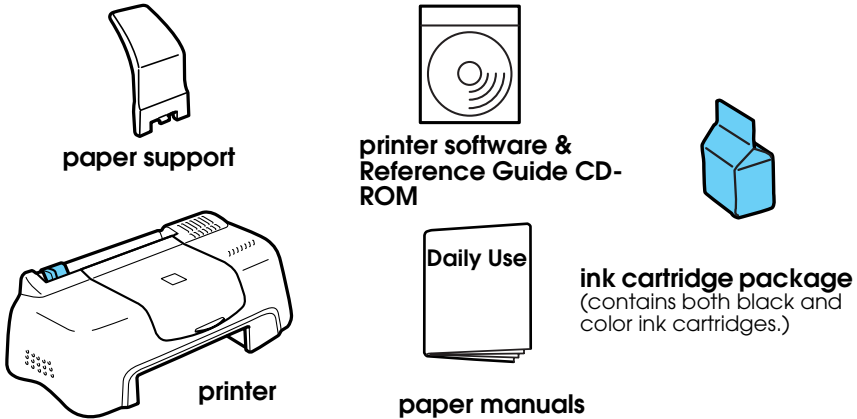
*contain important information and useful tips on the operation of your printer.*



# Setup Guide

---

## Checking the Package Contents



The package contents may vary in certain locations.

The ink cartridges packed with your printer are for initial setup. In order to maintain high quality printouts, your printer will use large quantities of ink during the setup process. As a result, the ink cartridges used for setup will empty faster than normal.

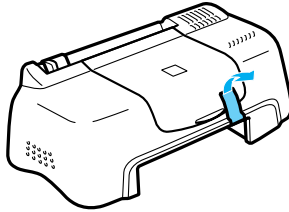
Follow "Checking the Package Contents" section through "Installing the Printer Software" section in this manual to install the printer software. After the software installation is complete, follow the on-screen messages and proceed to "Installing and Checking the Ink Cartridges" section. To ensure that your printer is operating correctly, proceed to "Printing Your First Page" section after an on-screen message informs you that the setup is complete.

---

## ***Unpacking the printer***

Remove all tape and protective materials attached to the printer.

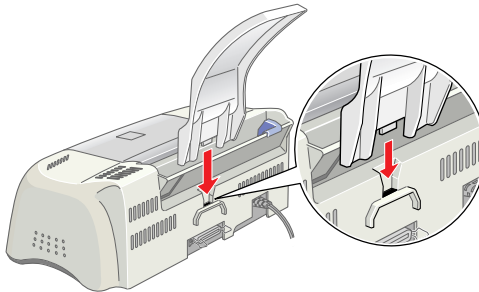
\*The number of tape strip used may vary from what is shown.



---

## ***Attaching the Paper Support***

Insert the paper support into the slots at the rear of the printer and place the printer on a flat, stable surface. Leave enough space in front of the printer for paper to be ejected smoothly.

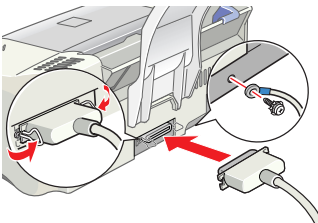


---

## Connecting the Printer

Your printer connects to your computer via a shielded, twisted-pair parallel interface. Make sure that the parallel cable supports bidirectional communication. Otherwise, the printer will not work. Depending upon your geographic location, you may need to obtain the appropriate cable. See "Options and Consumable Products" in the *Daily Use* guide for details.

Follow these steps to connect the printer to your PC.

1. Make sure that the computer is turned off, and the printer's power cord is unplugged.
2. Plug the cable connector securely into the printer's interface connector. Then squeeze the wire clips together until they lock in place on both sides. If your cable has a ground wire, connect it to the ground connector below the interface connector.
3. Plug the other end of the cable into the computer's parallel interface. If there is a ground wire at the computer end of the cable, connect it to the ground connector at the back of the computer.

---

## Installing the Printer Software


After connecting the printer to your computer, you need to install the software included on the "Printer Software for EPSON Stylus COLOR 480" CD-ROM shipped with your printer.

If you wish to make a floppy disk version of the printer software on your CD-ROM, you can use the driver disk creation utility included on the CD.

**Note:**

- ❑ *When using Windows 2000, if you do not follow the steps below to install the printer software, Microsoft's Universal driver may be installed instead. To see if the Universal driver has been installed, right click anywhere in the printer driver window and then click About in the list that appears. If a screen containing the words Unidrv Printer Driver is displayed, follow the steps below to reinstall the printer driver.*
  
- ❑ *If the Digital Signature Not Found dialog box appears during the installation process, click Yes. If you click NO, you must reinstall the printer software as described below.*

Follow these steps to install your printer software.

1. Make sure that your printer is unplugged.
2. Turn on your computer and start Windows. If the New Hardware Found dialog box or any other Wizard appears, click Cancel.
3. Insert the printer software CD shipped with your printer in the CD-ROM drive. The Installer dialog box appears. If it does not, double-click the My Computer icon. Click the CD-ROM icon, then select open from the File menu. Then double-click Epsetup.exe. (For floppy disk users, insert the disk in a disk drive and double-click the My Computer icon, then the floppy disk drive icon, and then Setup.exe.)
4. Select Install Printer Driver/Utility, and click . Then click OK in the dialog box that appears to start the printer software installation.



5. Follow the on-screen instructions to plug the power cord into a properly grounded electrical outlet. Before plugging in the cord, check the label on the back of the printer to make sure the voltage required by the printer matches that of the electrical outlet you will plugging it into. Also, make sure that you have the correct power cable for your power source.



**Caution:**

*It is not possible to change the printer's voltage. If the rated voltage and your outlet voltage do not match, contact your dealer for assistance. Do not plug in the power cord.*

**Note:**

*If the power cord is not attached to the printer, connect it to the AC inlet on the back of the printer.*

6. After plugging in the power cord, the Setup utility opens automatically. If a message informs you to restart your computer, follow the instructions.



---

## ***Installing and Checking the Ink Cartridges***

When your printer software installation is complete, the Setup utility opens automatically. The Setup utility leads you through the ink cartridge installation process and then prints nozzle and print head alignment check patterns to ensure that your printer is operating correctly. Follow the on-screen instructions. When an on-screen message informs you that the ink cartridge installation is complete, click OK and proceed to "Printing Your First Page" section.

**Note:**

- ❑ *After the setup process is complete, a printer-shaped shortcut icon appears on the Windows taskbar. For details on how to use this icon see "Monitoring Preferences" in your online Reference Guide.*
- ❑ *If you did not use the Setup utility to install ink cartridges, use EPSON Status Monitor3 to install them. To access EPSON Status Monitor3, right click the printer shortcut icon on the taskbar, and choose EPSON Stylus COLOR 480. Then click the How to button.*

## **Installing the Ink Cartridges**

Please pay attention to the following information when installing the ink cartridges.



**Warning:**

*The ink cartridges are self-contained units. Under ordinary use, ink will not leak from a cartridge. If ink does get on your hands, wash them thoroughly with soap and water. If ink gets into your eyes, flush them immediately with water.*



**Caution:**

- ❑ *You must remove the yellow tape seals from the cartridges before installing them; otherwise, the cartridges will become unusable.*
- ❑ *Do not remove the blue portion of the tape seals from the cartridges; otherwise, the cartridges may become clogged and unable to print.*
- ❑ *Do not remove the tape seals from the bottom of the cartridges; otherwise, ink will leak.*
- ❑ *Once you install the ink cartridges, do not open their clamps again until you replace the ink cartridges; otherwise, the cartridges may become unusable.*
- ❑ *Do not move the print head by hand; otherwise, you may damage the printer.*

**Note:**

- ❑ *Do not open the ink cartridge packages until just before you install them, or the ink may dry up.*
  
- ❑ *Install both ink cartridges. If either of the cartridges is not installed, the printer will not work.*

## **Checking the printer**

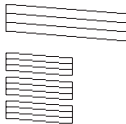
After installing the ink cartridges, the Setup utility automatically guides you through the nozzle check and print head alignment check. Follow the on-screen instructions.

### **Nozzle check**

The printer will print a test pattern, allowing you to check if any nozzles are clogged.

Here are sample printouts.

Good sample



Print head needs to be cleaned.



If the printout is satisfactory, proceed to the next section, “Print head alignment.”

If the nozzle check page does not print satisfactorily (for example, if any segment of the printed lines is missing), click **Cleaning** to clean the print heads.

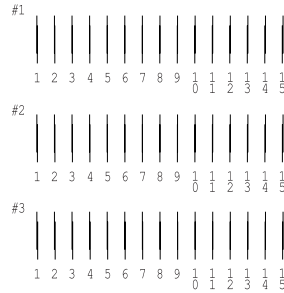
If print quality hasn’t improved after repeating the nozzle checking and cleaning procedures four or five times, contact your dealer.

## Print head alignment

The printer will print test patterns, allowing you to check if the print head is aligned.

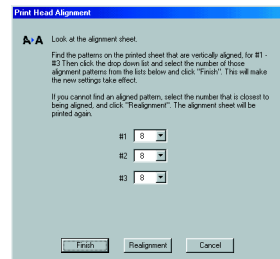
Here are sample printouts.

From each pattern on the printed test sheet, choose the vertical line that is aligned best. For each pattern, select the corresponding line number from the appropriate drop-down list box in the Print Head Alignment dialog box, then click Finish to put the new settings into effect.



### Note:

*If you cannot find a line which is aligned correctly, select the number of the line which is the closest to being correct and click Realignment. The alignment test sheet will be printed again.*



---

## Printing Your First Page

After making sure your printer is operating correctly, you are ready to print your first page. To familiarize yourself with the printer software, we recommend printing one of the sample files provided with your printer software. To print a sample file, follow the instructions in this section.

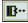
If you choose to print your own document instead, open the document in your application, then proceed to step 4 in the relevant section below, making changes where appropriate.

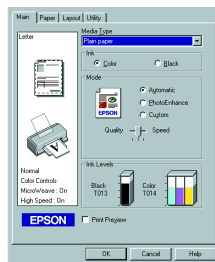


**Note:**

- ❑ See your software manual for details on how to use your application software.
- ❑ Depending on the type of document you are printing and the type of paper you are using, you may have to make settings different from those described in this section.

Follow these steps to print the sample file.

1. Make sure A4 or letter size plain paper is loaded in the printer.
2. Insert the printer driver CD-ROM. If the Installer dialog box appears, click  Quit.
3. Double-click the My Computer icon. Right-click the CD-ROM icon and click Open.
4. Double-click the sample.bmp file to open it.
5. To change the printer driver settings, open the File menu and click Print. A Print dialog box similar to the one below opens (This example is from Paint).



6. Make sure EPSON Stylus COLOR 480 is selected in the Name list box, then click Properties. The printer driver opens.
7. Click the Main tab, then click anywhere in the Media Type box and select Plain Paper.

**Note:**

*The printer driver lets you choose from a wide variety of settings to get the best results. See your online Reference Guide for detailed information.*

8. Click Close, Print, or OK to print. You may need to click a combination of these buttons.

While printing, the EPSON Progress Meter will appear, showing the printing progress and the status of your printer.

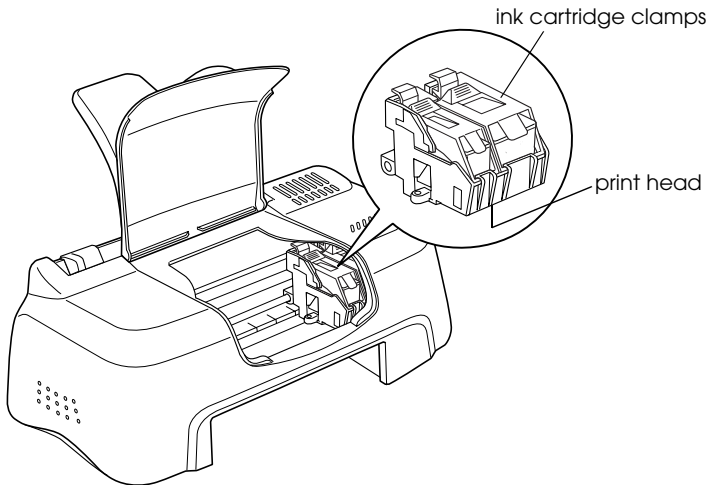
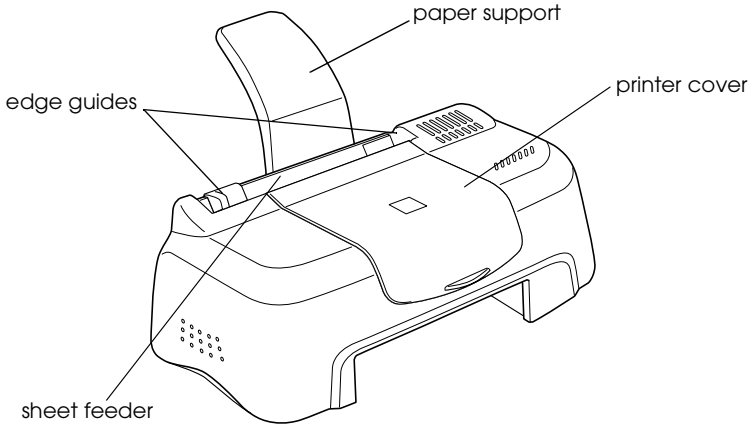
The setup process for this printer is now complete.

See the *Daily Use* guide when you want information on regular printer operations. See the *Reference Guide* included on the printer software CD-ROM for detailed information on making printer driver settings, printing on special paper, and troubleshooting.

# Printer Parts and Functions

---

## Printer Parts





# Loading Special Paper, Envelopes, and Other Media

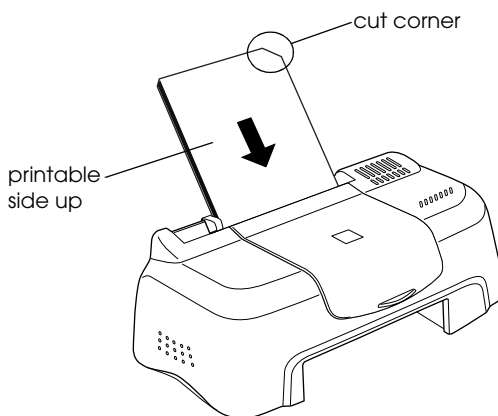
---

## Loading Special Paper and Other Media

You can print on a wide variety of special media, including ink jet paper, photo quality glossy film, photo paper, transparencies, index cards, and adhesive sheets.

When loading special media distributed by EPSON, read the instruction sheets packed with the media first and keep the following points in mind. For more details on using such media, see “Paper Handling” in the online *Reference Guide*.

- ❑ Make sure the printable side of the paper is facing up when loading media into the sheet feeder. See the instruction sheets packed with the media to determine which side is the printable surface. Some media have cut corners to help identify the correct loading direction, as shown in the illustration.



- ❑ Make sure the paper stack fits under the arrow mark located on the inside surface of the left edge guide.
- ❑ The loading capacity for EPSON special media is explained below.

360 dpi Ink Jet Paper and Photo Quality Ink Jet Paper	Up to 30 sheets.
Photo Quality Ink Jet Cards, Ink Jet Note Cards, and Ink Jet Greeting Cards	Up to 30 index cards. Always place the included support sheet* under the cards.
Photo Quality Glossy Film	One sheet at a time. For A4 or Letter size glossy film, always put a sheet of plain paper under the film. For A6 size glossy film, always put the included support sheet* under the film.
Ink Jet Transparencies	One sheet at a time. Always put a sheet of plain paper under the transparency.
Photo Quality Self Adhesive Sheets	One sheet at a time.
Photo Paper	One sheet at a time.
Photo Stickers 16 and Photo Stickers 4	One sheet at a time.
Panoramic Photo Paper and Iron-On Cool Peel Transfer Paper	One sheet at a time.
Matte Paper-Heavyweight	One sheet at a time.

\*Take care not to print on support sheets loaded under special media.

## ***About special media cleaning sheets***

Cleaning sheets packaged with EPSON special media should not be used with this printer. The cleaning function performed by these sheets is not necessary with this type of printer, and the sheets could jam in the printer.

---

## Loading Envelopes

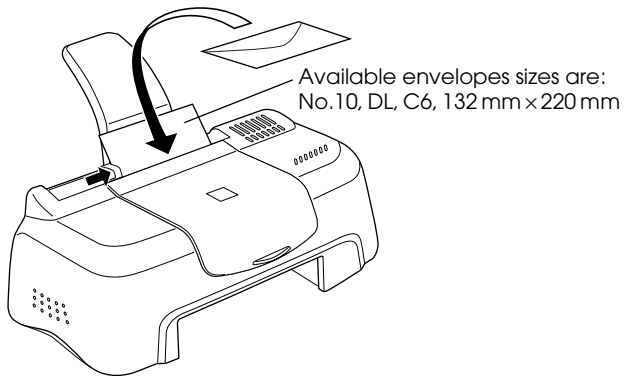
When printing on envelopes, please note the following:

- ❑ You can load up to 10 envelopes into the sheet feeder.

**Note:**

*The folding quality and thickness of envelopes varies widely. If the total thickness of the stack of envelopes exceeds 10 mm, press each envelope in the stack flat before loading. If print quality declines when a stack of envelopes is loaded, load one envelope at a time.*

- ❑ Load envelopes flap edge first with the flap side down, as shown in the illustration.



- ❑ Do not use envelopes that are curled or folded. Make sure to flatten the envelope flaps before loading. Avoid using envelopes that are too thin; they may curl during printing.
- ❑ Select Plain Paper as the Media Type setting in the printer driver.





# Using the Printer Software

---

## Printer Software Introduction

The printer software which comes with your printer includes a printer driver and printer utilities. The printer driver lets you choose from a wide variety of settings to get the best results from your printer. The printer utilities help you check the printer and keep it in top operating condition.

## Getting more information

For information on using the printer driver, see “Making Changes to Printer Settings” on page 22.

For information on using the printer utilities, see “Using the Printer Utilities” in the online *Reference Guide*.

**Note:**

*The specific features available in the printer software vary depending on the version of Windows you are using.*

Online help provides more information about the printer software. See “Getting Information Through Online Help” on page 33 for instructions on accessing help.

## Accessing the printer software

You can access the printer software from most Windows applications, or from the Windows Start menu (Windows 98, 95, 2000 and NT 4.0).

When you access the printer software from a Windows application, the settings you make apply only to the application you are using.

When you access the printer software from the Start menu, the settings you make apply to all of your Windows applications.

### ***From Windows applications***

1. From the File menu, click Print or Print Setup.
2. In the dialog box that appears, click Printer, Setup, Options, or Properties. (Depending on your application, you may need to click a combination of these buttons.) The printer driver opens.

### ***From the Windows Start menu***

1. Click Start, point to Settings, then click Printers.
2. For Windows 95 and 98, select your printer, then click Properties on the File menu. For Windows 2000, select your printer, then click Printing Preferences on the File menu. For NT 4.0, select your printer, then click Document Defaults on the File menu. The printer driver opens.

---

## ***Making Changes to Printer Settings***

The printer driver features the following menus and settings.

Main: Media Type, Ink, Mode

Paper: Paper Size, Copies, Orientation, Printable Area

Layout: Reduce/Enlarge, Multi-Page, Watermark

The Mode settings on the Main menu are arranged to give you four levels of control over the printer driver, as explained below.

<b>Automatic</b>	This mode provides the quickest and easiest way to start printing. See "Using the Automatic mode" on page 26.
<b>PhotoEnhance</b>	This mode lets you choose from a variety of image-correction settings specially designed for photos. See "Using the PhotoEnhance mode" on page 27.
<b>Custom</b>	This mode lets you choose from a list of ready-made or personalized settings suited to the kind of document you want to print. When Custom is selected, the Advanced button is enabled, allowing you to access the Advanced dialog box. See "Using the Custom mode" on page 28.
<b>Advanced</b>	This button opens the Advanced dialog box, where you can make detailed settings to fit your individual needs. From the Advanced dialog box, you can add your personalized settings to the Custom Settings list.

In addition to making comprehensive Mode settings that affect overall print quality, you can also modify individual aspects of your printout using the Paper and Layout menus. For more information about the Paper and Layout menus, see your online *Reference Guide*.

## ***Making the Media Type setting***

The Media Type setting determines what other settings are available, so you should always make this setting first.

On the Main menu, select the Media Type setting that matches the media which is loaded in the printer. To find out what Media Type you are using, find your media in the list below, and refer to the corresponding Media Type under which it is grouped (shown in larger type). For some media, there are several Media Type settings to choose from.

#### Plain Paper

##### Plain paper

##### Envelopes

EPSON Premium Ink Jet Plain Paper (A4)	S041214
--	---------

#### 360 dpi Ink Jet Paper

EPSON 360 dpi Ink Jet Paper (A4)	S041059
----------------------------------	---------

EPSON Iron-On Cool Peel Transfer Paper (A4)	S041154
---	---------

#### Photo Quality Ink Jet Paper

EPSON Photo Quality Ink Jet Paper (A4)	S041061
--	---------

EPSON Photo Quality Ink Jet Cards (A6)	S041054
--	---------

EPSON Photo Quality Ink Jet Cards (5 × 8")	S041121
--	---------

EPSON Photo Quality Ink Jet Cards (8 × 10")	S041122
---	---------

EPSON Photo Quality Self Adhesive Sheets (A4)	S041106
---	---------

EPSON Ink Jet Note Cards A6 (with envelopes)	S041147
--	---------

EPSON Ink Jet Greeting Cards 5 × 8" (with envelopes)	S041148
---	---------

EPSON Ink Jet Greeting Cards 8 × 10" (with envelopes)	S041149
--	---------

Matte Paper-Heavyweight

EPSON Matte Paper-Heavyweight (A4) S041259

Photo Paper

EPSON Photo Paper (A4) S041140

EPSON Photo Paper (4 × 6") S041134

EPSON Panoramic Photo Paper (210 × 594 mm) S041145

EPSON Photo Paper Cards (A4) S041177

Photo Quality Glossy Film

EPSON Photo Quality Glossy Film (A4) S041071

EPSON Photo Quality Glossy Film (A6) S041107

EPSON Photo Stickers 16 (A6) S041144

EPSON Photo Stickers 4 (A6) S041176

Ink Jet Transparencies

EPSON Ink Jet Transparencies (A4) S041063

**Note:**

*The availability of special media varies by location.*

## Using the Automatic mode

When Automatic is selected as the Mode setting on the Main menu, the printer driver takes care of all detailed settings based on the current Media Type and Ink settings. To make the Ink setting, click **Color** to print in color, or **Black** to print in black-and-white or grayscale. To make the Media Type setting, see “Making the Media Type setting” on page 23.



### Note:

- ❑ Depending on the media selected in the Media Type list (while Automatic is selected), a slider appears under the Custom radio button that lets you choose from Quality or Speed settings. Select Quality when print quality is more important than speed.
- ❑ Most Windows applications feature paper size and page layout settings that override similar settings on the printer driver. However, if your application does not have these settings, verify the settings on the printer driver's Paper menu.

## Using the PhotoEnhance mode

The PhotoEnhance mode provides a variety of image-correction settings that you can apply to your photo images before printing. PhotoEnhance does not affect your original data.



### Note:

- This mode is only available when printing 16-, 24-, or 32-bit color data.
- Printing with PhotoEnhance selected may increase the time required for printing, depending on your computer system and the amount of data contained in your image.

You can select from the following settings.

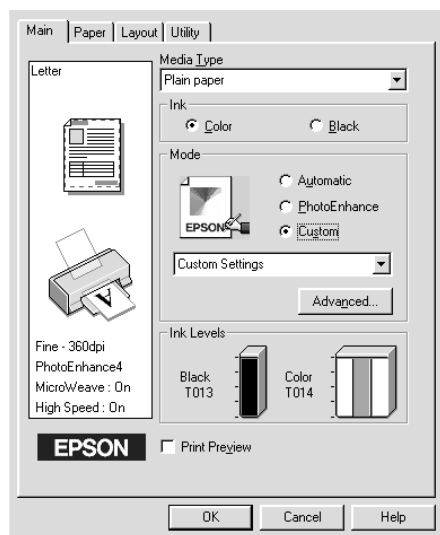
<b>Standard</b>	This setting provides standard image correction for most photos. Try this first.
<b>People</b>	This setting is best for photos of people.
<b>Nature</b>	This setting is best for outdoor scenery such as mountains, sky, and oceans.

<b>Soft Focus</b>	This setting makes your photos look as if they were taken with a soft-focus lens.
<b>Sepia</b>	This setting applies a sepia tone to your photos.

Selecting PhotoEnhance also enables the Digital Camera Correction check box. Select this check box when you are printing photos taken with a digital camera to give your printed images the smooth, natural appearance of photographs taken with a film camera.

## Using the Custom mode

The Custom mode offers ready-made settings designed for printing text and graphs and for applying a color-matching method. You can also create and save your own custom settings.





You can select from the following ready-made settings.

<b>ICM</b> (For Windows 98, 95 and 2000)	This setting automatically adjusts printout colors to match colors on your screen. ICM stands for Image Color Matching.
<b>sRGB</b>	This setting is best for color matching with other sRGB devices.

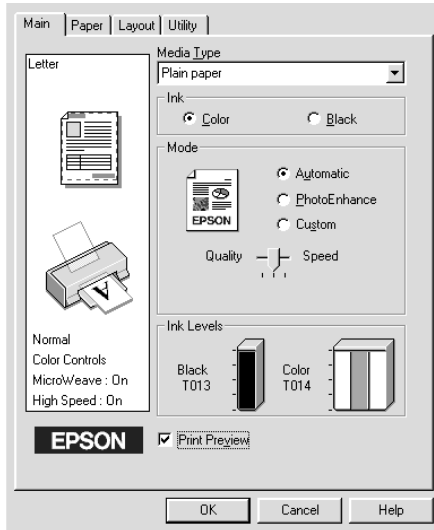
Follow the steps below to select a Custom setting.

1. Select Custom as the Mode setting on the Main menu.
2. Click anywhere in the list box to open it, then select the most appropriate setting for the type of document or image you wish to print.
3. When you select a Custom setting, other settings such as Print Quality and Color Adjustment are made automatically. Changes to these settings are reflected in the display on the left side of the Main menu.
4. Before printing, be sure to verify the Media Type and Ink settings, as they may be affected by the Custom setting you select. See “Making the Media Type setting” on page 23.

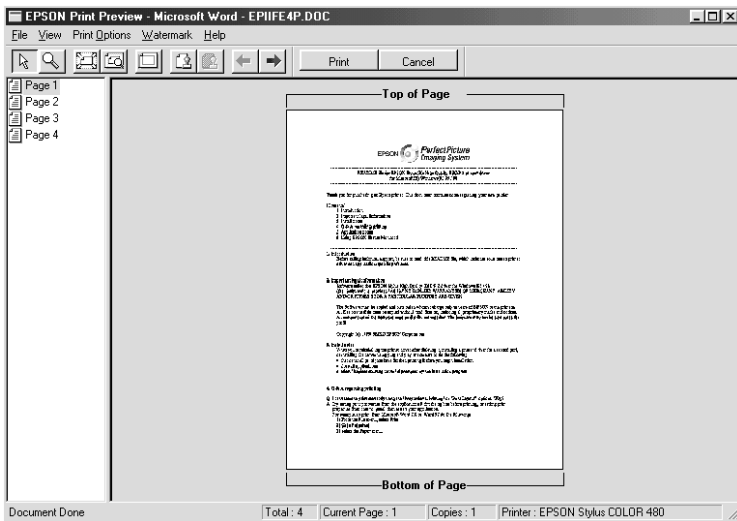
---

## Previewing your printout






Select the Print Preview check box on the Main menu when you wish to view a preview of your document before printing.







When you send a print job to the printer, the Print Preview window opens, allowing you to make changes before printing.




The Preview dialog box contains several icon buttons which you can use to perform the following functions:


	Drag 'n' Drop	This button lets you select and move watermarks.
	Zoom	This button enlarges or reduces the size of the previewed page.
	Fit-to-screen	This button scales the previewed page so that it fits the size of the window. Select this option if you want to see the entire page at one time.
	Maximum zoom	This button displays the previewed page at the maximum possible zoom ratio.
	Printable area on/off	This button displays a rectangle on the page being previewed. This rectangle is the printable area for the page. The printer cannot print anything which exceeds this rectangle. Press the icon button again to turn this feature off.

	Watermark	This button opens the watermark settings dialog box, where you can change any of the current watermark settings.
	Reset watermark settings	This button returns all watermark settings to what they were when the Print Preview window was first opened. If nothing has been changed, this feature is not available.
	Previous page	This button displays the page previous to the one currently being previewed. If there is no previous page then this feature is not available.
	Next page	This button displays the next page in the document. If there is no next page then this feature is not available.

You can also manipulate the previewed document in the following ways:

- Select and preview individual pages.
- Reduce or enlarge the size of the preview.
- Select and print any or all pages.
- Apply watermarks. The watermark you select will appear in the previewed image. For detailed information on customizing watermarks, see “Printing a watermark on your document” in the online *Reference Guide*.
- Specify which pages in the document you would like printed using the Add and Remove features. To add or remove a page, you must first click the page icon in the list appearing on the left side of the preview window. Then add or remove it using the commands in the Print Options menu.

	Add page	This button will add the highlighted pages to the list of pages to be printed.
---	----------	--

	Remove page	This button will remove the highlighted pages from the list of pages to be printed.
---	-------------	---

After you have previewed the document, click Print to print the document, or click Cancel to cancel printing.

---

## ***Getting Information Through Online Help***

Your printer software has an extensive online help feature, which provides you with instructions on printing, making printer driver settings, and using printer utilities.

### ***Accessing help from your application***

Open the File menu and choose Print or Print Setup. Then click Printer, Setup, Options, or Properties. (Depending on your application, you may need to click a combination of these buttons.) Click Help at the bottom of the Main, Paper, Layout, and Utility menus for help related to the items on that menu.

You can get specific help related to any item on a menu by right-clicking the item, then clicking the What's This? command.

### ***Accessing help from the Windows Start menu***

Click the Start button, point to Programs and Epson (for Windows 98 and 95) or EPSON Printers (for Windows 2000 and NT 4.0), then click EPSON Stylus COLOR 480 Help. The help contents window opens.



# Checking Printer Status

---

## Using EPSON Status Monitor 3

EPSON Status Monitor 3 displays detailed information on the printer status.

**Note:**

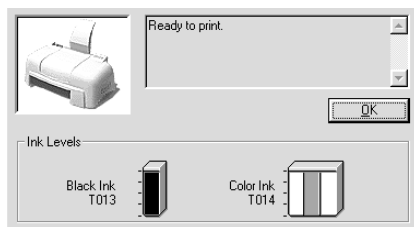
*Before using EPSON Status Monitor 3, be sure to read its README file. To open this file, click Start, point to Programs and then EPSON or EPSON Printers, then click EPSON Stylus COLOR 480 Readme.*

## Accessing EPSON Status Monitor 3

There are two ways to access EPSON Status Monitor 3.

- ❑ Double-click the printer-shaped shortcut icon on the Windows taskbar. See “Monitoring Preferences” on page 61.
- ❑ Open the printer driver, click the Utility tab, then click EPSON Status Monitor 3.

When you access EPSON Status Monitor 3, the following window appears.



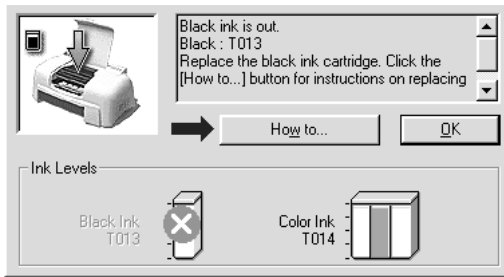




# Replacing Ink Cartridges

The Status Monitor 3 utility lets you monitor the remaining ink levels from your computer and view on-screen instructions for replacing a low or empty ink cartridge.

When an ink cartridge is low or empty, click the How to button in the Status Monitor's Printer Status window; the print head moves to the ink cartridge replacement position. Follow the on-screen instructions to replace the cartridge.



For more information on using the Status Monitor, see "Using EPSON Status Monitor 3" in the online *Reference Guide*.

**Note:**

*If you need to replace an ink cartridge before it is empty, use the Ink Cartridge Replacement utility from the Utilities menu in your EPSON printer driver.*

Please read the following information regarding ink cartridges and the print head before replacing the ink cartridges.

**Warning:**

- ❑ *Keep ink cartridges out of reach of children. Do not allow children to drink from or otherwise handle the cartridges.*
- ❑ *If ink gets on your hands, wash them thoroughly with soap and water. If ink gets into your eyes, flush them immediately with water. If discomfort or vision problems remain after a thorough flushing, see a doctor immediately.*

**Caution:**

- ❑ *EPSON recommends the use of genuine EPSON ink cartridges. Other products not manufactured by EPSON may cause damage to your printer not covered by EPSON's warranties.*
- ❑ *Do not remove the used cartridge from the printer until you have obtained a replacement. Otherwise, the ink remaining in the print head nozzles may dry out.*
- ❑ *You must remove the yellow tape seal from the cartridge before installing it; otherwise, a fatal error will occur and the cartridge will become unusable.*
- ❑ *Do not remove the blue portion of the tape seal from the top of the cartridge; otherwise, the print head may become clogged and unable to print.*
- ❑ *Do not remove the tape seals from the bottom of the cartridge; otherwise, ink will leak.*
- ❑ *Once you install the ink cartridges, do not open the ink cartridge clamps again until you replace the cartridges; otherwise, the cartridges may become unusable.*
- ❑ *Do not move the print head by hand; otherwise, you may damage the printer.*

**Note:**

- ❑ *Do not continue to print when one ink cartridge is empty, even if the other cartridge still contains ink. Before printing, replace the empty cartridge.*

- *In addition to the ink used during document printing, ink is consumed during print head cleaning, ink cartridge replacement, and the self-cleaning cycle which is performed when the printer is turned on.*



# Maintenance

---

## Checking the Print Head Nozzles

If you find that the printed image is unexpectedly faint or dots in the printed image are missing, you may be able to identify the problem by checking the print head nozzles.

You can check the print head nozzles from your computer with the Nozzle Check utility, accessed through the printer software or the shortcut icon.

### Using the Nozzle Check utility

**Note:**

- ❑ *Before using the utility, make sure that A4 or Letter size paper is loaded in the sheet feeder.*
- ❑ *Do not use the Nozzle Check utility while printing is in progress; otherwise, your printout may be marred.*

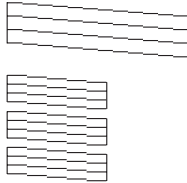
There are two ways to access the utility:

- ❑ Right-click the printer-shaped icon on the Windows taskbar and select Nozzle Check.
- ❑ Access the printer software and click the Utility tab, then click the Nozzle Check button.

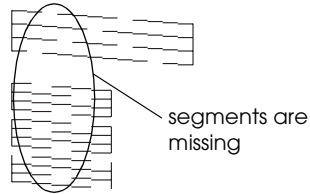
After opening the utility, follow the on-screen instructions.

The printer prints a nozzle check page. Below are sample printouts.

Good sample



Print head needs to be cleaned



The above sample is in black and white, but the actual test prints in color (CMYK).

If the nozzle check page does not print satisfactorily (for example, if any segment of the printed lines is missing) there is a problem with the printer. This could be a clogged ink nozzle or a misaligned print head. See the next section for details on cleaning the print head. For information on aligning the print head, see “Aligning the Print Head” on page 43.

---

## ***Cleaning the Print Head***

If you find that the printed image is unexpectedly faint or dots in the printed image are missing, you may be able to solve these problems by cleaning the print head, which ensures that the nozzles are delivering ink properly.

You can clean the print head from your computer using the Head Cleaning utility, accessed through the printer software or the shortcut icon.

**Note:**

- ❑ *Print head cleaning uses both color and black ink. To avoid wasting ink, clean the print head only if print quality declines; for example, if the printout is blurry or the color is incorrect or missing.*

- ❑ *Use the Nozzle Check utility first to confirm that the print head needs to be cleaned. This saves ink.*
- ❑ *Do not start the Head Cleaning or Nozzle Check utility while printing is in progress; otherwise, your printout may be marred.*

## **Using the Head Cleaning utility**

**Note:**

*If the Status Monitor or Progress Meter displays a message indicating that the ink cartridges need replacing, you cannot clean the print head. Replace the appropriate ink cartridge first.*

There are two ways to access the utility:

- ❑ *Right-click the printer-shaped icon on the Windows taskbar and select Head Cleaning.*
- ❑ *Access the printer software and click the Utility tab, then click the Head Cleaning button.*

After opening the utility, follow the on-screen instructions.

---

## **Aligning the Print Head**

If you notice a misalignment of vertical lines, you may be able to solve this problem from your computer with the Print Head Alignment utility, accessed through your printer software or the shortcut icon.

**Note:**

*Do not start the Print Head Alignment utility while printing is in progress; otherwise, your printout may be marred.*

There are two ways to access the utility:

- ❑ Right-click the printer-shaped icon on the Windows taskbar and select Print Head Alignment.
- ❑ Access the printer software and click the Utility tab, then click the Print Head Alignment button.

After opening the utility, follow the on-screen instructions.



# Troubleshooting

---

## **Error Messages**

The Status Monitor 3 utility provides status messages and a graphic display showing the current state of the printer.

If a problem occurs while printing, an error message appears in the Progress Meter window. Click the How To button to have the Status Monitor provide instructions for dealing with the problem.

---

## **Typical Problems and Solutions**

Most printer problems have simple solutions. Find the problem in the list below and apply the recommended solution. For more information, see “Troubleshooting” in the online *Reference Guide*.

### **Print quality problems**

If you are having print quality problems, try the solutions offered here.

#### *Horizontal banding*

Try one or more of these solutions:

- Make sure the printable side of the paper is face up in the sheet feeder.
- Run the Nozzle Check utility. If any segments are missing in the nozzle check pattern, run the Head Cleaning utility to clear any clogged ink nozzles.

### *Vertical misalignment*

Try one or more of these solutions:

- Make sure the printable side of the paper is face up in the sheet feeder.
- Run the Print Head Alignment utility.
- Clear the High Speed check box in the Advanced dialog box of your printer driver. For instructions, see the printer driver's online help.

### *Color gaps*

Try one or more of these solutions:

- Make sure your paper is not damaged, dirty, or too old.
- Run the Head Cleaning utility to clear any clogged ink nozzles.
- Make sure there are no error messages displayed. If an error message indicates that the ink cartridges need replacing, click the HOW TO button and follow the on-screen instructions.

### *Blurry or smeared printout*

Try one or more of these solutions:

- Make sure the printable side of the paper is face up in the sheet feeder.
- Make sure your paper is not damaged, dirty, or too old.

## ***Paper feed or paper jam problems***

If the printer doesn't feed paper, feeds multiple pages, or the paper is jammed, an error message appears. Click the Eject button to eject any jammed paper. Also make sure of the following:

- ❑ The paper isn't too old or creased.
- ❑ Paper isn't loaded above the arrow on the left edge guide.
- ❑ The edge guides are set correctly.
- ❑ The paper isn't too thin or rough. Use paper that meets the paper requirements for the printer. See the online *Reference Guide* for paper specifications.

**Note:**

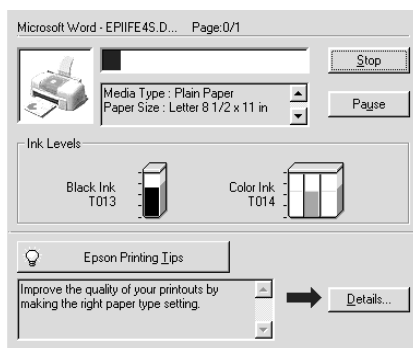
*Print quality may not be what you expect on the first page printed after a paper jam. If print quality is a problem, try printing the page again.*

---

## Cancelling Printing

If the printouts are not what you expected and contain incorrect or garbled characters or images, you may need to cancel printing. To cancel printing, follow the instructions below.

When you send a print job to the printer, the Progress Meter appears on your computer screen.



Click the Stop button to cancel printing.

---

## ***Where to Get Help***

If your printer is not operating properly and you cannot solve the problem using the troubleshooting information in your printer documentation, contact customer support services for assistance.

Customer support will be able to help you much more quickly if you provide them with the following information.

- Serial number of your printer  
(The serial number label is on the back of the printer)
- Printer model
- Brand and model of your computer
- Printer software version  
(Click ABOUT in your printer driver)
- Windows version you are using
- Software application(s) you normally use with your printer and their version number(s)

# Consumable Products

---

## Consumable Products

The following ink cartridges and EPSON special media are available for your printer.

### ***Ink cartridges***

You can use the following cartridges with your printer.

Black ink cartridge	T013051
Color ink cartridge	T014051

***Note:***

*The product numbers of ink cartridges may vary by location.*

### ***EPSON special media***

EPSON offers specifically designed media for ink jet printers to meet most high-quality printing needs.

EPSON Premium Ink Jet Plain Paper (A4)	S041214
EPSON 360 dpi Ink Jet Paper (A4)	S041059
EPSON Photo Quality Ink Jet Paper (A4)	S041061
EPSON Photo Quality Ink Jet Cards (A6)	S041054
EPSON Photo Quality Ink Jet Cards (5 × 8")	S041121
EPSON Photo Quality Ink Jet Cards (8 × 10")	S041122
EPSON Photo Quality Self Adhesive Sheets (A4)	S041106
EPSON Ink Jet Note Cards A6 (with envelopes)	S041147
EPSON Ink Jet Greeting Cards 5 × 8" (with envelopes)	S041148
EPSON Ink Jet Greeting Cards 8 × 10" (with envelopes)	S041149

EPSON Photo Quality Glossy Film (A4)	S041071
EPSON Photo Quality Glossy Film (A6)	S041107
EPSON Ink Jet Transparencies (A4)	S041063
EPSON Photo Paper (A4)	S041140
EPSON Photo Paper (4 × 6")	S041134
EPSON Photo Paper Cards (A4)	S041177
EPSON Photo Stickers 16 (A6)	S041144
EPSON Photo Stickers 4 (A6)	S041176
EPSON Panoramic Photo Paper (210 × 594 mm)	S041145
EPSON Iron-On Cool Peel Transfer Paper (A4)	S041154
EPSON Matte Paper-Heavyweight (A4)	S041259

**Note:**

*The availability of special media varies by location.*

# Printer Specifications

---

## System Requirements

### For using the printer

To use your printer, you need Microsoft® Windows® 98, Windows® 95, Windows® 2000 or Windows NT® 4.0 installed and a shielded, twisted-pair parallel cable connected.

Your computer should also meet the following system requirements.

Minimum System Requirements	Recommended System
i486/25 MHz for Windows 95 and NT 4.0 i486/66 MHz for Windows 98 Pentium 133 MHz for Windows 2000	Pentium or higher processor for Windows 98, 95 and NT 4.0 133 MHz or higher processor for Windows 2000
16 MB RAM for Windows 98, 95 and NT 4.0 32 MB RAM for Windows 2000	32 MB RAM or more for Windows 98 and 95 64 MB or more for Windows 2000 and NT 4.0
20 MB hard disk space for Windows 98 and 95 40 MB for Windows 2000 and NT 4.0	50 MB or more hard disk space for Windows 98 and 95 100 MB or more for Windows 2000 and NT 4.0
VGA monitor	VGA or better monitor

Your computer dealer can help you update your system if it does not meet these requirements.

## ***For using the online Reference Guide***

System	Microsoft Windows® 95, 98, 2000 or NT 4.0
CPU	i486/25 MHz (for Windows 95 and NT 4.0) i486/66 MHz (for Windows 98) (Pentium or better recommended) Pentium 133 MHz for Windows 2000
Memory	16 MB for Windows 95, 98, and NT 4.0 (32 MB or more recommended) 32 MB for Windows 2000
Hard disk space	2 MB to install the Reference Guide
CD-ROM drive	Double-speed (Quad-speed or better recommended)
Display	640 × 480 pixel or 800 × 600 pixel resolution, with High Color (16 bit) or True Color (32 bit) setting
Browser	Web browser (Microsoft Internet Explorer 4.0 or later recommended)