

# Where to Find Information

## Setup Guide

This guide will help you set up and begin using your printer. It includes information on setting up your printer and installing the printer software.

## Daily Use guide

This guide provides information on normal printer operation. It also contains troubleshooting tips and customer support information.

## Reference Guide included on the CD-ROM

The Reference Guide contained on the CD-ROM included with your printer provides detailed information about printer software settings, printing on special paper, maintenance, and problem solving.

To open the *Reference Guide*, insert the printer software CD in the CD-ROM drive.

For Windows, select Online Guide in the Installer dialog box and click . Then, click View Reference Guide to open the guide.

For Macintosh, double-click the Online Guide icon in the EPSON window and then the EPSON STYLUS COLOR 680 icon. Then, click View Reference Guide to open the guide.

### **Note:**

*It is possible to install the Reference Guide on your hard disk. See "Installing in Windows" or "Installing in Macintosh" in your Setup Guide for instructions.*

All rights reserved. No part of this publication may be reproduced, stored in a retrieval system, or transmitted in any form or by any means, electronic, mechanical, photocopying, recording, or otherwise, without the prior written permission of SEIKO EPSON CORPORATION. The information contained herein is designed only for use with this EPSON printer. EPSON is not responsible for any use of this information as applied to other printers.

Neither SEIKO EPSON CORPORATION nor its affiliates shall be liable to the purchaser of this product or third parties for damages, losses, costs, or expenses incurred by the purchaser or third parties as a result of: accident, misuse, or abuse of this product or unauthorized modifications, repairs, or alterations to this product, or (excluding the U.S.) failure to strictly comply with SEIKO EPSON CORPORATION's operating and maintenance instructions.

SEIKO EPSON CORPORATION shall not be liable for any damages or problems arising from the use of any options or any consumable products other than those designated as Original EPSON Products or EPSON Approved Products by SEIKO EPSON CORPORATION.

SEIKO EPSON CORPORATION shall not be held liable for any damage resulting from electromagnetic interference that occurs from the use of any interface cables other than those designated as EPSON Approved Products by SEIKO EPSON CORPORATION.

EPSON is a registered trademark and EPSON Stylus is a trademark of SEIKO EPSON CORPORATION.

Microsoft and Windows are registered trademarks of Microsoft Corporation.

General Notice: Other product names used herein are for identification purposes only and may be trademarks of their respective owners. EPSON disclaims any and all rights in those marks.

Copyright © 2000 by SEIKO EPSON CORPORATION, Nagano, Japan.



**Printed on Recycled Paper.**

---

# Contents

<b>Safety Instructions</b> .....	1
Important Safety Instructions .....	1
A Few Precautions .....	2
ENERGY STAR Compliance .....	5
Warnings, Cautions, and Notes .....	5
<b>Setup Guide</b> .....	7
Checking the Package Contents .....	7
Unpacking the printer .....	8
Attaching the Paper Support .....	9
Connecting the Printer .....	9
Installing the Printer Software .....	11
Installing and Checking the Ink Cartridges .....	18
Printing Your First Page .....	25
<b>Printer Parts and Functions</b> .....	29
Printer Parts and Control Panel Functions .....	29
<b>Loading Special Paper, Envelopes, and Other Media</b> 33	
Loading Special Paper and Other Media .....	33
Loading Envelopes .....	36
<b>Printing with Windows</b> .....	37
Printer Software Introduction .....	37
Making Changes to Printer Settings .....	39
Previewing your printout .....	42
Getting Information Through Online Help .....	44
<b>Printing with Macintosh</b> .....	47
Printer Software Introduction .....	47

Making Changes to Printer Settings .....	47
Previewing your printout .....	49
<b>Replacing Ink Cartridges</b> .....	<b>51</b>
Replacing an Ink Cartridge .....	51
<b>Maintenance</b> .....	<b>55</b>
Checking the Print Head Nozzles .....	55
Cleaning the Print Head .....	57
Aligning the Print Head .....	59
<b>Troubleshooting</b> .....	<b>61</b>
Online Problem Solving (not available for Windows 3.1) .....	61
Correcting USB Problems .....	62
Error Indicators .....	66
Typical Problems and Solutions .....	67
Cancelling Printing .....	69
<b>Consumable Products</b> .....	<b>75</b>
<b>Printer Specifications</b> .....	<b>79</b>
System Requirements .....	79

# Safety Instructions

---

## Important Safety Instructions

Read all of these instructions before using your printer. Also, be sure to follow all warnings and instructions marked on the printer.

- ❑ Do not block or cover the openings in the printer's cabinet. Do not insert objects through the slots.
- ❑ Take care not to spill liquid on the printer.
- ❑ Use only the type of power source indicated on the printer's label.
- ❑ Connect all equipment to properly grounded power outlets. Avoid using outlets on the same circuit as photocopiers or air control systems that regularly switch on and off.
- ❑ Avoid electrical outlets controlled by wall switches or automatic timers.
- ❑ Keep the entire computer system away from potential sources of electromagnetic interference, such as loudspeakers or the base units of cordless telephones.
- ❑ Do not use a damaged or frayed power cord.
- ❑ If you use an extension cord with the printer, make sure that the total ampere rating of the devices plugged into the extension cord does not exceed the cord's ampere rating. Also, make sure that the total ampere rating of all devices plugged into the wall outlet does not exceed the wall outlet's ampere rating.
- ❑ Do not attempt to service the printer yourself.

- ❑ Unplug the printer and refer servicing to qualified service personnel under the following conditions:

The power cord or plug is damaged; liquid has entered the printer; the printer has been dropped or the cabinet damaged; the printer does not operate normally or exhibits a distinct change in performance.

- ❑ If you plan to use the printer in Germany, the building installation must be protected by a 10 or 16 amp circuit breaker to provide adequate short-circuit protection and over-current protection for this printer.

**Note for German-speaking users:**

Bei Anschluß des Druckers an die Stromversorgung muss sichergestellt werden, dass die Gebäudeinstallation mit einer 10 A- oder 16 A-Sicherung abgesichert ist.

---

## ***A Few Precautions***

Take note of the following when using the printer, handling the ink cartridges, or choosing a location for the printer.

### ***When using the printer***

Observe the following:

- ❑ Do not put your hand inside the printer or touch the ink cartridges during printing.
- ❑ Do not move the print head by hand; otherwise, you may damage the printer.
- ❑ Remove your printouts from the output tray shortly after printing; otherwise, the output tray may warp.

- ❑ Always turn the printer off using the ⏻ power button. When this button is pressed, the ⏻ power light flashes briefly and then goes out. Do not unplug the printer or turn off the power to the outlet until the ⏻ power light stops flashing.
- ❑ Before transporting the printer, make sure that the print head is in the home (far right) position and the ink cartridges are in place.

## *When handling the ink cartridges*

Observe the following:

- ❑ Keep ink cartridges out of the reach of children. Do not allow children to drink from or otherwise handle the cartridges.
- ❑ Be careful when you handle the used ink cartridges, as there may be some ink remaining around the ink supply port. If ink gets on your skin, wash the area thoroughly with soap and water. If discomfort or vision problems remain after a thorough flushing, see a doctor immediately.
- ❑ Do not shake an ink cartridge; this can cause leakage.
- ❑ Install the ink cartridge immediately after you remove it from its package. Leaving the cartridge unpacked for a long time before use may result in reduced print quality.
- ❑ Do not use an ink cartridge beyond the date printed on the cartridge carton. For best results, use up the ink cartridges within six months of installing them.
- ❑ Do not dismantle the ink cartridges or try to refill them. This could damage the print head.
- ❑ After bringing an ink cartridge inside from a cold storage site, allow it to warm up at room temperature for at least three hours before using it.

- ❑ Store ink cartridges in a cool, dark place.
- ❑ Do not touch the green IC chip on the side of the cartridge. This may affect normal operation and printing.
- ❑ In this ink cartridge, the IC chip retains a variety of cartridge related-information, such as the amount of ink remaining, so that a cartridge may be removed and reinserted freely. However, each time the cartridge is inserted, some ink is consumed because the printer automatically performs a reliability check.
- ❑ If you remove an ink cartridge for later use, protect the ink supply area from dirt and dust and store it in the same environment as the printer. Note that there is a valve in the ink supply port, making covers or plugs unnecessary, but care is needed to prevent the ink from staining items that the cartridge touches. Do not touch the ink cartridge ink supply port or surrounding area.

## *When choosing a place for the printer*

Observe the following:

- ❑ Place the printer on a flat, stable surface that extends beyond the printer base in all directions. The printer will not operate properly if it is tilted or at an angle.
- ❑ Leave enough space in front of the printer for paper to be fully ejected.
- ❑ Avoid places subject to rapid changes in temperature and humidity. Also, keep the printer away from direct sunlight, strong light, or heat sources.
- ❑ Avoid places subject to shocks and vibrations.
- ❑ Avoid places subject to dust.



- ❑ Leave enough room around the printer to allow for sufficient ventilation.
- ❑ Place the printer near a wall outlet where the plug can be easily unplugged.

**Note for French-speaking users:**

Placez l'imprimante près d'une prise de contact où la fiche peut être débranchée facilement.

---

## ENERGY STAR Compliance



As an ENERGY STAR Partner, EPSON has determined that this product meets the ENERGY STAR guidelines for energy efficiency.

The International ENERGY STAR Office Equipment Program is a voluntary partnership with the computer and office equipment industry to promote the introduction of energy-efficient personal computers, monitors, printers, fax machines, copiers, and scanners in an effort to reduce air pollution caused by power generation.

---

## Warnings, Cautions, and Notes



### **Warnings**

*must be followed carefully to avoid bodily injury.*



### **Cautions**

*must be observed to avoid damage to your equipment.*

### **Notes**

*contain important information and useful tips on the operation of your printer.*



# Setup Guide

---

## Checking the Package Contents



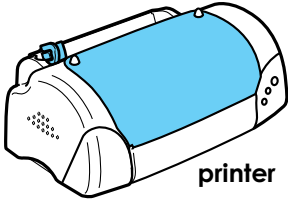
**paper support**



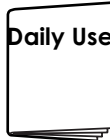
**printer software &  
Reference Guide  
CD-ROM**



**ink cartridge package  
(contains both black and  
color ink cartridges.)**



**printer**



**paper manuals**

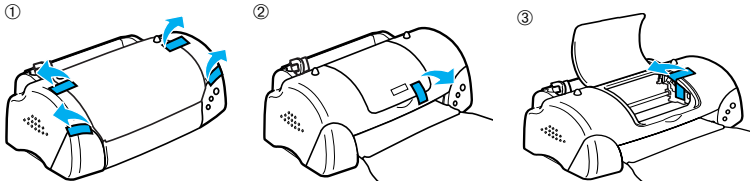
The package contents may vary in certain locations.

The ink cartridges packaged with your printer are for initial setup. In order to maintain high quality printouts, your printer will use large quantities of ink during the setup process. As a result, the ink cartridges used for setup will empty faster than normal.

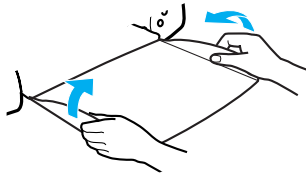
---

## Unpacking the printer

Remove all tape and protective materials from the printer and lift the top corners of the output tray off of the knobs on the top of the printer to lower it.



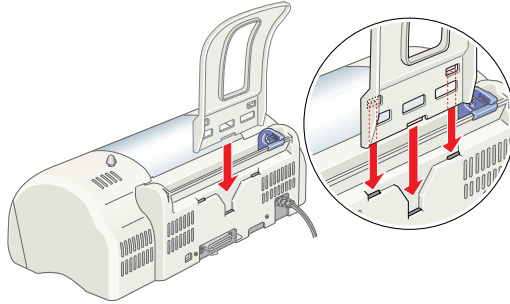
If the output tray is curled, bend both sides of the tray upwards at the seams.



---

## Attaching the Paper Support

Insert the paper support into the slots at the rear of the printer and place the printer on a flat, stable surface.



---

## Connecting the Printer

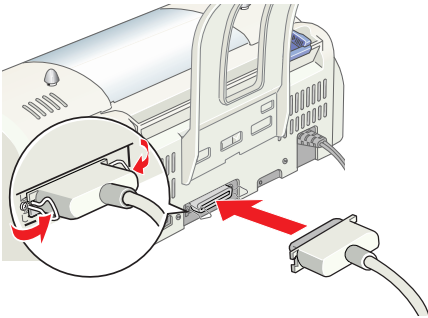
Your printer connects to your computer via the parallel or USB interface. Macintosh computers can only be connected via the USB interface. Depending upon your geographic location, you may need to obtain the appropriate cable. See “Options and Consumable Products” in the *Daily Use* guide for details.

**Note:**

- ❑ *In order to connect your PC via the USB interface, your computer must be a Windows 98 or Windows 2000 pre-installed model that is equipped with a USB port.*
  
- ❑ *If you use a USB hub, we recommend that you connect the printer to the first tier of the hub, or connect the printer directly to the computer’s USB port.*

## Using a parallel interface for Windows users

To connect the printer to your PC, you need a shielded, twisted-pair parallel cable. Follow the directions below.

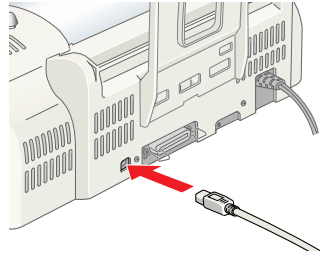
1. Make sure that both the printer and the computer are turned off.
2. Plug the cable connector securely into the printer's interface connector. Then squeeze the wire clips together until they lock in place on both sides. If your printer has a ground connector screw to the right of the interface connector, connect the ground wire to the ground connector screw.
3. Plug the other end of the cable into the computer's parallel interface. If there is a ground wire at the computer end of the cable, connect it to the ground connector at the back of the computer.

## Using a USB interface for Windows and Macintosh users

To connect the printer to a USB port, you need a standard shielded USB cable. Follow these steps.

1. Make sure that both the printer and the computer are turned off.

2. Plug the appropriate end of the cable into the USB port on the back of the printer. (The end that fits the printer has a different shape from the end that fits the computer.)
3. Connect the other end of the cable to the computer's USB port.



---

## Installing the Printer Software

After connecting the printer to your computer, you need to install the software included on the “Printer Software for EPSON Stylus COLOR 680” CD-ROM shipped with your printer.

Your printer software includes:

- ❑ **Printer driver and utilities**  
The printer driver runs, or “drives,” your printer; use it to make settings such as print quality, speed, media type, and paper size. The Nozzle Check, Head Cleaning, and Print Head Alignment utilities help you keep your printer in top operating condition. EPSON Status Monitor 3 (for Windows 98, 95, 2000, and NT 4.0) or EPSON StatusMonitor (for Macintosh) notifies you of printer errors and displays printer status information such as the amount of ink remaining. The Status Monitor also guides you through the ink replacement process.
- ❑ **Online guides**  
The online *Reference Guide* helps you learn more about your printer.

If you are using the floppy disk version of the software, make a backup copy of the EPSON printer software disk before you begin installation. If you wish to make a floppy disk version of the printer software on your CD-ROM, you can use the driver disk creation utility included on the CD.

Refer to the appropriate section below.

## ***Installing in Windows 98, 95, 2000, and NT 4.0***

Follow the instructions in this section to install the printer software and then, for Windows 98 and Windows 2000 USB users, to ensure that the USB driver is installed correctly.

### **Note:**


- ❑ *When using Windows 2000, you must follow the steps below to install the printer software; otherwise, Microsoft's Universal driver may be installed instead. To check if the Universal driver has been installed, open the Printers folder and right-click the icon for your printer. To open the printer driver, click Printer Preferences on the shortcut menu that appears, then right-click anywhere in the driver. If ABOUT is displayed in the shortcut menu that appears, click it. A message box with the words "Unidrv Printer Driver" appears. You must reinstall the printer software as described below. If ABOUT is not displayed, the printer software has been installed correctly.*
  
- ❑ *If the Digital Signature Not Found dialog box appears during the installation process, click Yes. If you click NO, you will have to return to step 1 and install the printer software again.*

## **Installing the printer software**

Follow these steps to install the printer software.


1. Make sure that your printer is turned off.



2. Turn on your computer and start Windows. If the New Hardware Found dialog box or any other Wizard appears, click Cancel.
3. Insert the printer software CD shipped with your printer in the CD-ROM drive. The Installer dialog box appears. (For floppy disk users, insert the disk in the floppy-disk drive and double-click the My Computer icon, the floppy disk drive icon, and then Setup.exe.)
4. Select Install Printer Driver/Utility, and click . Then, click OK in the dialog box that appears to start the printer software installation. After the printer software installation is complete, the Problem Solver is automatically installed on your hard drive.



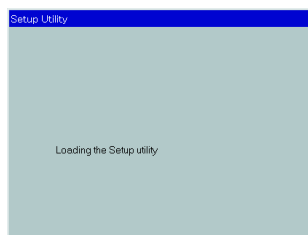
**Note:**

- It is possible to install the Reference Guide on your hard drive from the Installer dialog box, as shown above. To install the guide, click Online Guide and then . Then, click Install Reference Guide and follow the on-screen instructions. When the installation is complete, an ESC680 Guide icon appears in the EPSON folder. Double-click the icon to open the guide.*
  - The Problem Solver provides tips and instructions to help you solve most problems that you may encounter when printing. The Problem Solver can be accessed through the Epson folder, Status Monitor 3, or the printer driver. For details, see the “Troubleshooting” section of your Daily Use guide.*
5. Follow the on-screen instructions to turn on your printer.

For Windows 98 users, the printer port configuration starts automatically.

For printers connected via the USB cable, the USB device driver installation starts automatically at this point. When a message appears asking you to restart your computer, do so.

6. After turning on the printer, the Setup utility opens automatically. Follow the on-screen instructions to install the ink cartridges, check the print head nozzles, and clean the print head. When a message appears informing you that the setup is complete, click OK.



**Note:**

*If the Setup utility does not start, proceed to "Installing and Checking the Ink Cartridges" to install the ink cartridges using the printer's control panel.*

7. When a message appears informing you that the installation is complete, click OK.

**Note:**

*If an error message appears, either the printer driver or the EPSON USB printer device driver is not installed correctly. See "Troubleshooting" in the Daily Use guide for details.*

After the setup is complete, proceed to "Printing Your First Page" to print your first page.

### **Ensuring that the USB driver is installed correctly for Windows 98 and Windows 2000 users**

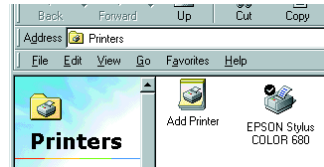
Follow the directions below to confirm that the USB driver is installed correctly.

**Note:**

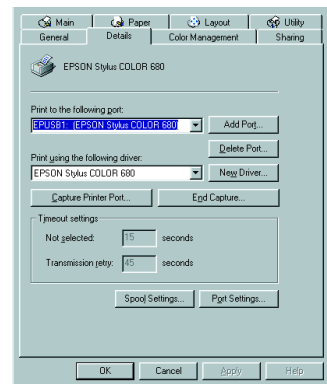
*The illustrations used in this section show the procedure for Windows 98.*

1. Click the Start button, point to Settings, and click Printers. Make sure that the icon for your printer appears in the Printers window.

Select the icon for your printer, then click Properties on the File menu.



2. For Windows 98 users, click the Details tab and make sure that EPUSBx: (EPSON Stylus COLOR 680) is displayed in the Print to the following port list box. For Windows 2000 users, click the Ports tab and make sure that USBxxx, EPSON Stylus COLOR 680 is displayed in the Print to the following port(s) list box.



**Note:**

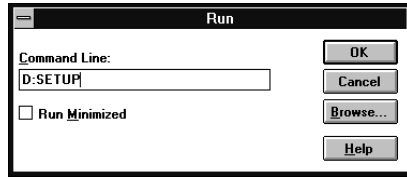
*If the correct port is not displayed, refer to the "Troubleshooting" section of the Daily Use guide or the online Reference Guide.*

## Installing in Windows 3.1

Follow the steps below to install the printer software.

1. Make sure that Windows 3.1 is running and that the Program Manager window is open.
2. Insert the printer software CD that is shipped with your printer in the CD-ROM drive. (If you use the floppy disk version, insert it in the floppy-disk drive.)

3. Click RUN on the File menu. The Run dialog box opens. In the Command Line box, type D:SETUP and click OK. If the CD-ROM drive has a drive letter other than "D", or if you are using the floppy disk version, substitute the appropriate letter.
4. The installation program begins copying the printer software files.
5. When the installation is complete, click OK to exit the installation program.



The installation program automatically selects this printer as the default printer for Windows applications.

For information on opening and using the software, see "Using the Printer Software for Windows" in the *Daily Use* guide.

## ***Installing in Macintosh***

Follow the instructions in this section to install the printer software and then to select your printer in the Chooser.



### ***Caution:***

*Turn off all virus protection programs before you install the printer software.*

## ***Installing the printer software***

Follow these steps to install your printer software.

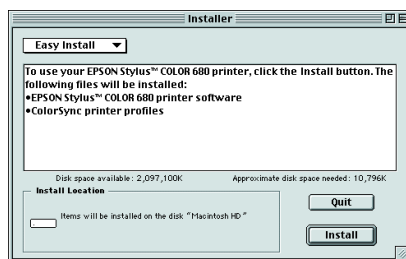
1. Turn on your Macintosh and insert the software CD in the CD-ROM drive. The EPSON printer software CD-ROM opens automatically.

2. If a single Installer icon appears, double-click the icon. If separate folders containing Installer icons for several languages appear, double-click the folder for your preferred language, then double-click the Installer icon inside it.

**Note:**

- ❑ *It is possible to install the Reference Guide on your hard drive from the printer software CD-ROM. To install the guide, click Install Reference Guide and follow the on-screen instructions. When the installation is complete, a View Reference Guide icon appears in the EPSON folder. Double-click the icon to open the guide.*
- ❑ *It is possible to access Technical Support from the printer software CD-ROM. Insert the CD in the CD-ROM drive and double-click the Technical Support Web Site icon in the EPSON folder.*

3. At the initial screen, click Continue. The Installer dialog box appears.

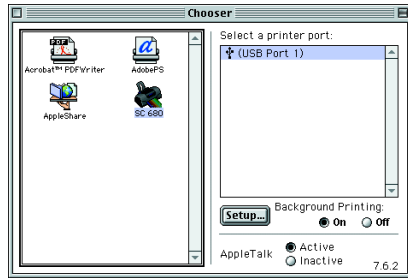


4. To install the printer software that is included on your printer software CD-ROM, make sure that the Install Location box displays the correct drive, then click Install.
5. When a message appears informing you that the installation is complete, click Restart to restart your computer.

## Selecting your printer in the Chooser

After you have installed the printer software on your Macintosh, you need to open the Chooser and select your printer. You must select a printer the first time you use it or whenever you want to switch to another printer. Your Macintosh will always print using the last printer selected. Follow the steps below to select your printer in the Chooser.

1. Choose Chooser from the Apple menu. Then, select the icon for your printer and the port that your printer is connected to.
2. Select the appropriate Background Printing radio button to turn background printing on or off.



When background printing is on, you can use your Macintosh while it is preparing a document for printing. In order to use the EPSON Monitor3 utility to manage print jobs, background printing must be turned on.

3. Close the Chooser.

---

## Installing and Checking the Ink Cartridges

This printer uses ink cartridges equipped with IC chips. The IC chip accurately monitors the amount of ink used by each cartridge, so even if a cartridge is removed and inserted again, all of its ink can be used. However, some ink from both color and black ink cartridges is consumed each time a cartridge is inserted because the printer automatically checks reliability.

Be sure to use the ink cartridges packed with your printer the first time that you install ink cartridges.

Refer to the appropriate section below.

## ***Using the Setup utility for Windows 98, 95, 2000, and NT 4.0 users***

The Setup utility should open automatically when your printer software installation is complete. Follow the on-screen instructions. If you cannot access the Setup utility, refer to the next section.

## ***Using the printer's control panel***

If you are a Macintosh or Windows 3.1 user, or cannot access the Setup utility, use the printer's control panel to install the ink cartridges.

Before installing the ink cartridges, note the following.



### ***Warning:***

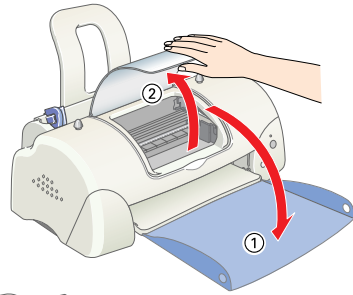
*The ink cartridges are self-contained units. Under ordinary use, ink will not leak from a cartridge. If ink does get on your hands, wash them thoroughly with soap and water. If ink gets into your eyes, flush them immediately with water.*

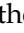
### ***Note:***

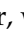
*Do not open the ink cartridge packages until just before you install them; otherwise, the ink may dry up.*

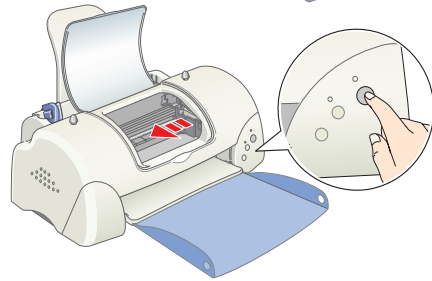
Follow the steps below to install the ink cartridges.

1. Lower the output tray, then open the printer cover.



2. Turn on the printer by pressing the  power button.

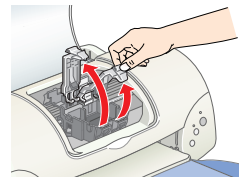
The print head moves to the center, which is the ink cartridge installation position. The  power light flashes and the error light comes on.



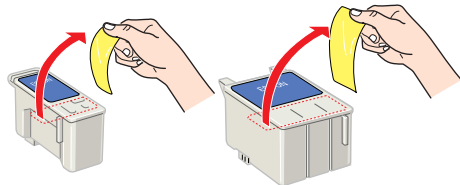
**Caution:**

*Do not move the print head by hand. Doing so may damage the printer.*

3. Push back the release tabs and lift up the ink cartridge clamps.



4. Open the ink cartridge packages. Next, remove only the yellow tape seals from each cartridge.

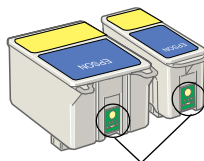






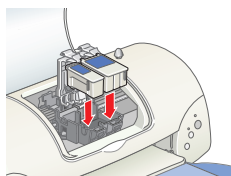
**Caution:**

- ❑ *You must remove the yellow tape seals from the cartridges before installing them; otherwise, the cartridges will become unusable and you will be unable to print.*
- ❑ *If you have installed an ink cartridge without removing the yellow tape seal, you must remove the cartridge and install a new one. Prepare the new cartridge by removing the yellow tape seal, then install it in the printer.*
- ❑ *Do not remove the blue portion of the tape seal from the cartridges; otherwise, the cartridges may become unusable.*
- ❑ *Do not remove the tape seals from the bottom of the cartridges; otherwise, ink will leak.*
- ❑ *Do not touch the green IC chip on the side of the cartridge. Doing so may prevent normal operation and printing.*
- ❑ *Do not remove the green IC chip from the side of the cartridge. If you install an ink cartridge without a chip, the printer may be damaged.*



Do not touch this part.

5. Align the tabs on each ink cartridge so that they are resting on the tabs protruding from the base of the opened ink cartridge clamps. Do not apply excessive force to the cartridges.



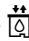
**Caution:**

*Make sure that the ink cartridge tabs are not under the tabs protruding from the base of the opened ink cartridge clamps, as this can damage the clamps.*




**Note:**

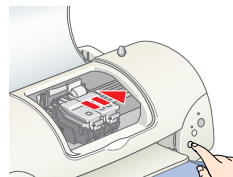
Install both ink cartridges. If either of the cartridges is not installed, the printer will not work.

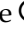

6. Lower the ink cartridge clamps until they lock into place.
7. Press the  ink cartridge replacement button. The printer moves the print head and begins charging the ink delivery system. This process takes about two and a half minutes.



**Caution:**

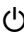
Always press the  ink cartridge replacement button to move the print head. Do not move the print head by hand. Doing so may damage the printer.



While the ink is charging, the  power light flashes and the printer produces a variety of mechanical sounds. These sounds are normal. When the ink delivery system has been charged, the print head returns to the home (far right) position and the  power light comes on.



**Caution:**

Never turn off the printer while the  power light is flashing.

8. Close the printer cover.

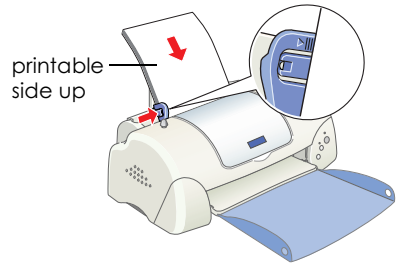
## Checking the printer

Before printing your first page, you need to make sure that the printer is working correctly by loading paper, then printing a nozzle check page and, if necessary, cleaning the print head. Refer to the appropriate section below.

### Loading paper

Follow the steps below to load plain paper in the printer.


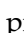

1. Lower the output tray and slide the left edge guide so that the distance between the edge guides is slightly wider than the width of your paper.
2. Fan a stack of paper, then tap it on a flat surface to even the edges.
3. Load the stack of paper in the sheet feeder with the printable side up and the right edge of the paper resting against the right edge guide. Then, slide the left edge guide against the left edge of the paper.

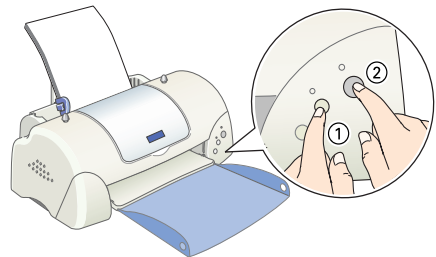


**Note:**

- ❑ Always load paper into the sheet feeder short edge first.
- ❑ Make sure that the paper stack fits under the arrow mark inside the edge guide.

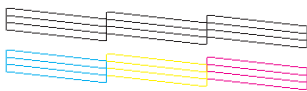
### Checking the print head nozzles

Make sure that the printer is turned off. Hold down the  maintenance button (① in the illustration) and press the  power button (② in the illustration) to turn on the printer. Then release only the power button first. When the printer starts the nozzle check, release the  maintenance button.



Below are sample printouts.

Good sample




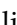

Print head needs to be cleaned




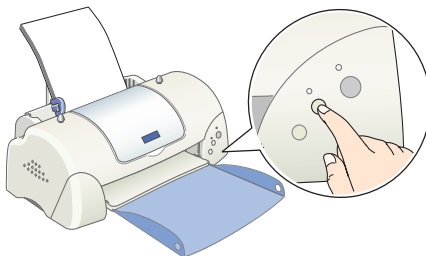
If the nozzle check page does not print satisfactorily (for example, if any segment of the printed lines is missing), then you should clean the print head as explained below. If the printout is satisfactory, you are ready to print your first page. See “Printing Your First Page” for instructions.

## ***Cleaning the print head***


Follow the steps below to clean the print head.


1. Make sure that the  power light is on and that the  error light is off.
2. Hold down the  maintenance button for three seconds.

The printer starts cleaning the print head and the  power light begins flashing. Print head cleaning takes about thirty seconds to complete.



### ***Caution:***

*Never turn off the printer while the  power light is flashing. Doing so may damage the printer.*

3. When the  power light stops flashing, print a nozzle check pattern to confirm that the head is clean and to reset the cleaning cycle.

If print quality hasn't improved after repeating the nozzle checking and cleaning procedures four or five times, contact your dealer.

---

## Printing Your First Page

After making sure that your printer is operating correctly, you are ready to print your first page. To familiarize yourself with the printer software, we recommend printing one of the sample files provided with your printer software. To print a sample file, follow the instructions for Windows or Macintosh in this section.


If you choose to print your own document instead, open the document in your application, then proceed to step 4 in the relevant section below, making changes where appropriate.

### **Note:**

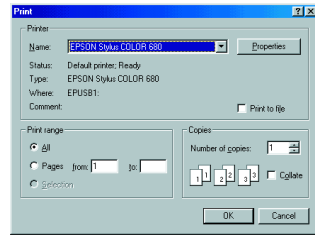
- ❑ *See your software manual for details on how to use your application.*
- ❑ *Depending on the type of document you are printing and the type of paper you are using, you may have to make settings different from those described in this section.*

## For Windows users

Follow these steps to print the sample file.

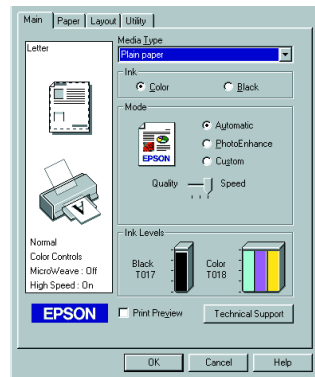
1. Make sure that A4 or Letter size EPSON Photo Quality Ink Jet Paper is loaded in the printer.
2. Insert the printer driver CD in the CD-ROM drive. If the Installer dialog box appears, click  Quit.
3. Double-click the My Computer icon and then the CD-ROM icon. Then double-click the sample.bmp file to open it.

- To change the printer driver settings, click Print on the File menu. A Print dialog box similar to the one on the right opens. (This example is from Paint).



- Make sure your printer is selected in the Name list box, then click Properties. The printer driver opens.

- Click the Main tab, then click anywhere in the Media Type box and select Photo Quality Ink Jet Paper.



- Select Color as the Ink setting.

- Select Automatic as the Mode setting. When Automatic is selected, the printer software optimizes other settings according to the Media Type and Ink settings you make.

- Click the Paper tab, then click anywhere in the Paper Size box and select the paper size that is loaded in the printer.

- Click OK at the bottom of the printer driver window. You return to the Print dialog box (or a similar dialog box).

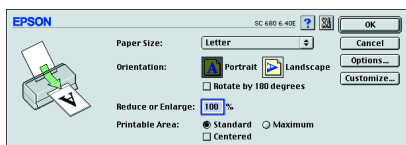
- Click Close, Print, or OK to print. You may need to click a combination of these buttons.


While printing, the EPSON Progress Meter (in Windows 98, 95, 2000 and NT 4.0) or the EPSON Despooler dialog box (in Windows 3.1) is displayed, showing the printing progress and the status of your printer.

## For Macintosh users

Follow these steps to print the sample file.

1. Make sure that A4 or Letter size paper is loaded in the printer.
2. Insert the printer software CD in the CD-ROM drive.
3. Open the EPSON folder and then double-click the README file.
4. Click Page Setup on the File menu. The following dialog box appears.

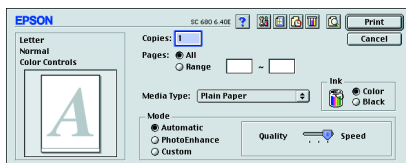


5. Select the paper size that is loaded in the printer from the Paper Size list.
6. Select  Portrait as the Orientation setting.
7. After making your settings, click OK to close the Page Setup dialog box.

### **Note:**

*You cannot print from the Page Setup dialog box. You can only print from the Print dialog box.*

8. Click Print on the File menu. The Print dialog box appears.



9. Select Plain Paper from the Media Type list.
10. Select Color as the Ink option.
11. Select Automatic as the Mode setting. This causes the printer software to optimize other settings according to the Media Type and Ink settings that you make.
12. Click Print to start printing.

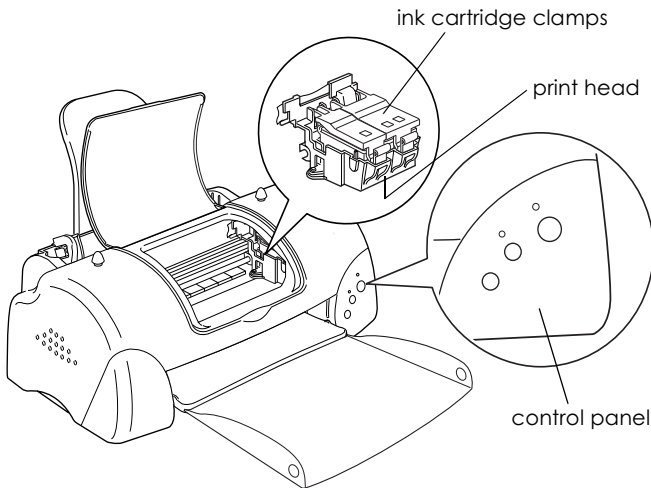
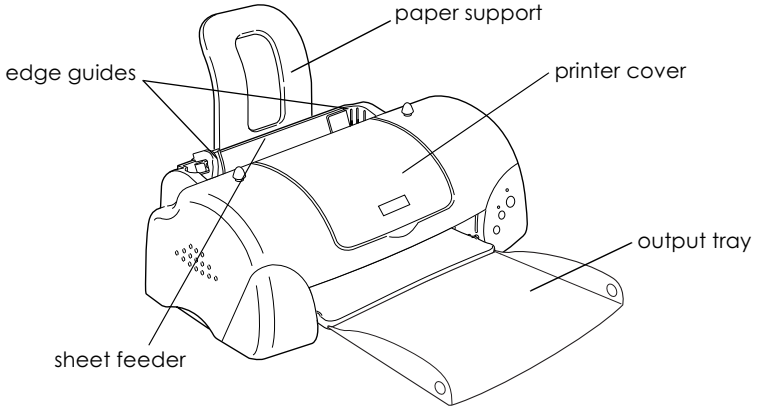
While printing is in progress, the EPSON Progress Meter is displayed, showing the printing progress and the status of your printer.




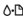


# Printer Parts and Functions

---


## Printer Parts and Control Panel Functions



## Buttons

Button	Function
 power	<p>Turns the printer on and off.</p> <p>Clears the printer's memory if pressed twice while the power is on.</p>
 maintenance	<p>Loads or ejects paper if pressed and released within two seconds.</p> <p>Resumes printing if pressed and released after a paper out error.</p> <p>Performs print head cleaning if pressed for 3 seconds when the  error light is off.</p> <p>Moves the print head to the ink cartridge replacement position and charges ink to the printer when ink is out.</p>
 ink cartridge replacement	<p>Moves the print head to the ink cartridge replacement position and charges ink to the printer.</p>

## Lights

Light	Description
 power	<p>On when the printer is on.</p> <p>Flashing when printer is receiving data, printing, replacing an ink cartridge, charging ink, or cleaning the print head.</p>

<p>⚠ error</p>	<p>On when the printer is out of paper. Load paper in the sheet feeder, then press the ⚠ maintenance button to resume printing.</p> <p>On when the paper is jammed. Take all of the paper out of the feeder, then reload the paper. If the light continues to flash, turn off the printer and gently pull all of the paper out of the printer.</p> <p>Flashing when the black or color ink cartridge is nearly empty.</p> <p>On when the black or color ink cartridge is empty. Replace the black ink cartridge (T017) or color ink cartridge (T018).</p> <p>Flashing when the print head moves to the ink cartridge replacement position. The light will flash faster if the color ink is out than if the black ink is out.</p>
--------------------	--



# Loading Special Paper, Envelopes, and Other Media

---

## Loading Special Paper and Other Media

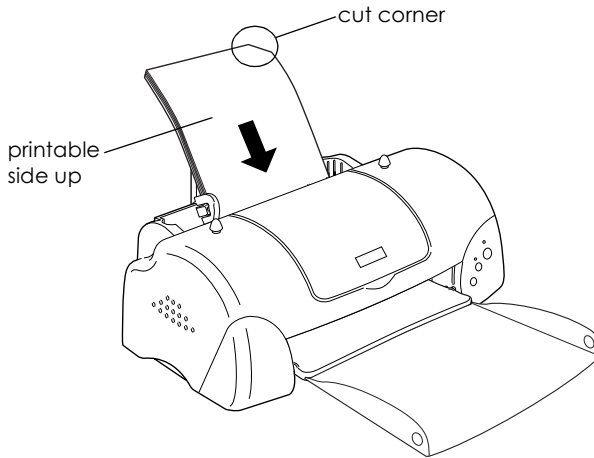
You can print on a wide variety of special media, including ink jet paper, photo quality glossy film, photo paper, transparencies, index cards, and adhesive sheets.

When loading special media distributed by EPSON, read the instruction sheets packed with the media first and keep the following points in mind.

**Note:**

*For more details on using special media, see “Paper Handling” in the online Reference Guide.*

- ❑ Make sure that the printable side of the paper is facing up when loading media into the sheet feeder. See the instruction sheets packed with the media to determine which side is the printable surface. Some types of media have cut corners to help identify the correct loading direction, as shown in the illustration.



- ❑ Make sure that the paper stack fits under the arrow mark located on the inside surface of the left edge guide.

- See below for the loading capacities for EPSON special media.

360 dpi Ink Jet Paper and Photo Quality Ink Jet Paper	Up to the arrow mark on the left edge guide.
Photo Quality Ink Jet Cards, Ink Jet Note Cards, and Ink Jet Greeting Cards	Up to 30 index cards. Always place the included support sheet* under the cards.
Photo Quality Glossy Film	One sheet at a time for best results. Always place a support sheet* or a sheet of plain paper under the glossy film.
Ink Jet Transparencies	One sheet at a time.
Photo Quality Self Adhesive Sheets	One sheet at a time.
Photo Paper	Up to 20 sheets. Always put a support sheet* under the stack of Photo Paper. 200 × 300 mm Photo Paper can only be loaded 1 sheet at a time.
Photo Stickers 16 and Photo Stickers 4	One sheet at a time.
Panoramic Photo Paper and Iron-On Cool Peel Transfer Paper	One sheet at a time.
Matte Paper-Heavyweight	Up to 20 sheets. Always place a support sheet* under the stack of Matte Paper-Heavyweight.
Premium Glossy Photo Paper	One sheet at a time.

\* Take care not to print on a support sheet that is loaded under special media.

## ***About special media cleaning sheets***

Cleaning sheets packaged with EPSON special media should not be used with this printer. The cleaning function performed by these sheets is not necessary with this type of printer, and the sheets could jam in the printer.

---

## Loading Envelopes

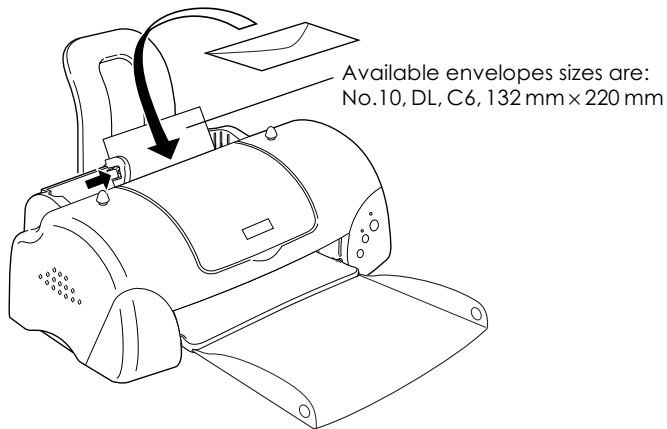
When printing on envelopes, please note the following:

- ❑ You can load up to 10 envelopes at a time in the sheet feeder.

**Note:**

*The folding quality and thickness of envelopes varies widely. If the total thickness of the stack of envelopes exceeds 10 mm, press each envelope in the stack flat before loading. If print quality declines when a stack of envelopes is loaded, load one envelope at a time.*

- ❑ Load envelopes flap edge first with the flap side down, as shown in the illustration.



- ❑ Do not use envelopes that are curled or folded. Flatten the envelope flaps before loading. Avoid using envelopes that are too thin as they may curl during printing.
- ❑ Select Plain Paper as the Media Type setting in the printer driver.



# Printing with Windows

---

## Printer Software Introduction

The printer software which comes with your printer includes a printer driver and printer utilities. The printer driver lets you choose from a wide variety of settings to get the best results from your printer. The printer utilities help you check the printer and keep it in top operating condition.

If you encounter any problems, refer to the Problem Solver HTML manual for help by clicking Technical Support on the Main menu of the printer driver.

## Getting more information

For information on using the printer driver, see “Making Changes to Printer Settings” on page 39.

For information on using the printer utilities, see “Using the Printer Utilities” in the online *Reference Guide*.

**Note:**

*The specific features available in the printer software vary depending on the version of Windows that you are using.*

Online help provides more information about the printer software. See “Getting Information Through Online Help” on page 44 for instructions on accessing help.

## Accessing the printer software

You can access the printer software from most Windows applications, from the Windows Start menu (Windows 98, 95, 2000 and NT 4.0), or from the Control Panel (Windows 3.1).

When you access the printer software from a Windows application, the settings that you make apply only to the application you are using.

When you access the printer software from the Start menu, the settings that you make apply to all of your Windows applications.

Refer to the appropriate section below.

### ***From Windows applications***

Follow the steps below to access the printer software.

1. From the File menu, click Print or Print Setup.
2. In the dialog box that appears, click Printer, Setup, Options, or Properties. (Depending on your application, you may need to click a combination of these buttons.) The printer driver opens.

### ***From the Start menu (Windows 98, 95, 2000, and NT 4.0)***

Follow the steps below to access the printer software.

1. Click Start, point to Settings, then click Printers.
2. For Windows 98 and 95 users, select your printer, then click Properties on the File menu.

For Windows 2000 users, select your printer, then click Printing Preferences on the File menu.

For Windows NT 4.0 users, select your printer, then click Document Defaults on the File menu.

The printer driver opens.

### ***From the Control Panel (Windows 3.1)***

Follow the steps below to access the printer software.

1. Double-click the Control Panel icon in the Main program group.
2. Double-click the Printer icon.
3. Select your printer in the Installed Printer list.
4. Click Setup. The printer driver opens.

---

## *Making Changes to Printer Settings*

The printer driver features the following menus and settings.

Main:      Media Type, Ink, Mode, Print Preview

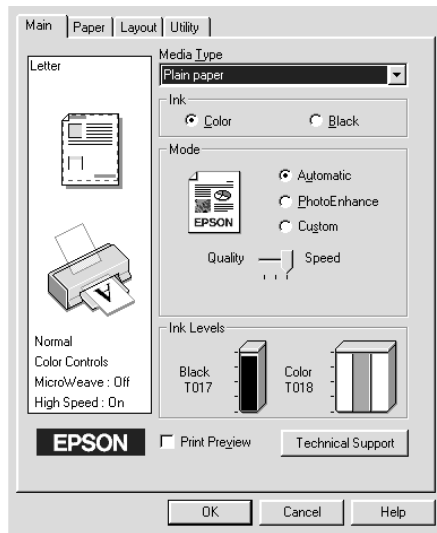
Paper:     Paper Size, Copies, Orientation, Printable Area

Layout:    Reduce/Enlarge, Multi-Page, Watermark

**Note:**

*The Layout menu is available for Windows 98, 95, 2000, and NT 4.0 users.*

The Mode settings on the Main menu are arranged to give you three levels of control over the printer driver, as explained below.



<p><b>Automatic</b></p>	<p>When this mode is selected, the printer driver takes care of all detailed settings based on the current Media Type and Ink settings. To make the Ink setting, click Color to print in color, or Black to print in black-and-white or grayscale.</p> <p>Depending on the media selected in the Media Type list (while Automatic is selected), a slider appears under the Custom radio button that lets you choose from Quality or Speed settings. Select Quality when print quality is more important than speed.</p>
<p><b>PhotoEnhance</b></p>	<p>This mode provides a variety of image-correction settings that you can apply to your photos before printing. PhotoEnhance does not affect your original data. This mode is only available when printing 16-, 24-, or 32-bit color data.</p>

<b>Custom</b>	This mode offers ready-made settings designed for printing text and graphs and for applying a color-matching method. You can also create and save your own custom settings using the Advanced settings.
---------------	---

In addition to making comprehensive Mode settings that affect overall print quality, you can also modify individual aspects of your printout using the Paper and Layout menus. For more information about the Paper and Layout menus, see your online *Reference Guide*.

## Making *the* Media Type setting

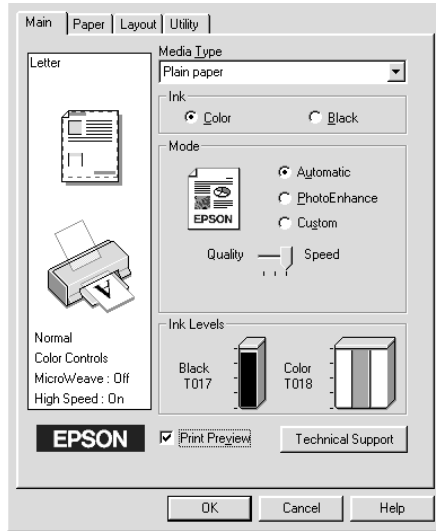
The Media Type setting determines what other settings are available, so you should always make this setting first.

On the Main menu, select the Media Type setting that matches the media that is loaded in the printer. To find out what Media Type you are using, find your media in the list found under “Plain Paper” on page 76, and refer to the corresponding Media Type under which it is grouped (shown in larger type). For some media, there are several Media Type settings to choose from.

---

## Previewing your printout

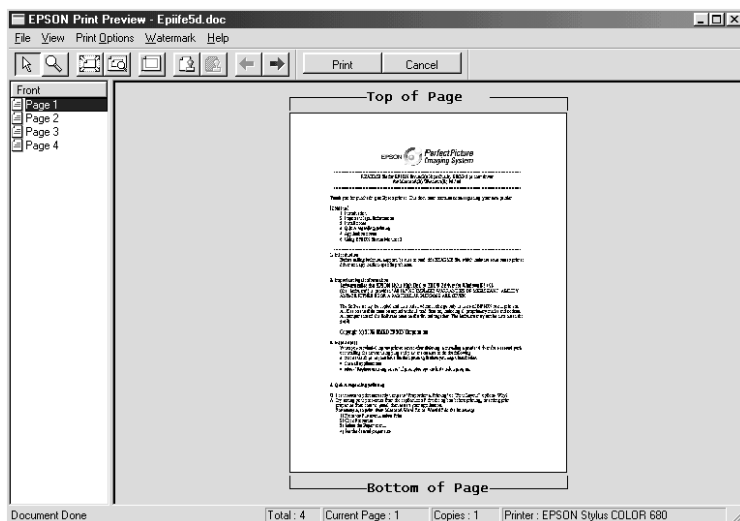
Select the Print Preview check box on the Main menu when you wish to view a preview of your document before printing.



### **Note:**

*This feature is not available for Windows 3.1.*

When you send a print job to the printer, the Print Preview window opens, allowing you to make changes before printing.



The Preview dialog box contains several icon buttons which you can use to perform a number of functions. See online help for details.

You can also manipulate the previewed document in the following ways:

- Select and preview individual pages.
- Reduce or enlarge the size of the preview.
- Select and print any or all pages.
- Magnify the previewed document. To do this, click View and then Magnify to open the Magnify window, which magnifies the area of the previewed document that is outlined by the red box. By dragging the red box, you can change which part of the document is magnified.

- ❑ View the individual pages that comprise a poster. The Poster window opens automatically when you send a print job while Poster is selected as the Multi-Page option on the Layout menu. From this window, you can view the individual pages which make up a poster. You can also open this dialog box by clicking View and then Poster.
- ❑ Apply watermarks. The watermark that you select will be displayed on the previewed image. For detailed information on customizing watermarks, see “Printing a watermark on your document” in the online *Reference Guide*.
- ❑ Specify which pages in the document you would like to print using the Add and Remove features. To add or remove a page, click the page icon in the list at the left side of the preview window. Then, add or remove it using the commands on the Print Options menu.

After you have previewed the document, click Print to print the document, or click Cancel to cancel printing.

---

## **Getting Information Through Online Help**

Your printer software has an extensive online help feature, which provides you with instructions on printing, making printer driver settings, and using printer utilities.

Refer to the appropriate section below.

### **Accessing help from your application**

Open the File menu and choose Print or Print Setup. Then, click Printer, Setup, Options, or Properties. (Depending on your application, you may need to click a combination of these buttons.) Click Help at the bottom of the Main, Paper, Layout, or Utility menu for help related to the items on that menu.



For Windows 98, 95, 2000, and NT 4.0 users, you can get specific help related to any item on a menu by right-clicking the item and then clicking the What's This? command.

### ***Accessing help from the Windows Start menu***

Click the Start button, point to Programs and Epson (for Windows 98 and 95) or EPSON Printers (for Windows 2000 and NT 4.0), then click EPSON Stylus COLOR 680 Help. The help contents window opens.

### ***Accessing help from Windows 3.1***

Open the EPSON program group and click the EPSON Stylus COLOR 680 Help icon. The help contents window opens.



# Printing with Macintosh

---

## Printer Software Introduction

The printer software which comes with your printer includes a printer driver and printer utilities. The printer driver lets you choose from a wide variety of settings to get the best results from your printer. The printer utilities help you check the printer and keep it in top condition.

For information on using the printer driver, see “Making Changes to Printer Settings” on page 47.


For information on using the printer utilities, see “Using the Printer Utilities” in the online *Reference Guide*.



You can also get more information about the printer software by clicking the help icon in any of the dialog boxes in the printer driver.

---

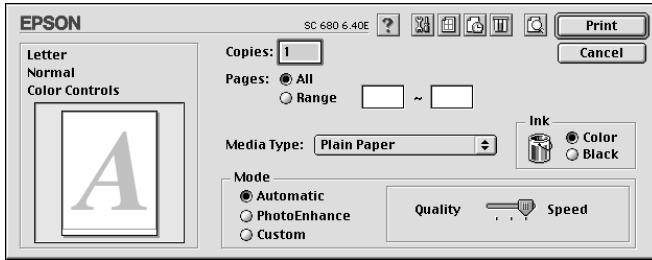
## Making Changes to Printer Settings

You will find the printer driver settings in the following dialog boxes.

- Print dialog box (click Print on the File menu of your application or click Options in the Page Setup dialog box)
- Page Setup dialog box (click Page Setup on the File menu of your application)
- Layout dialog box (click the  Layout icon button in the Print dialog box)

- ❑ Background Printing dialog box (click the  Background Printing icon button located in the Print dialog box)
- ❑ Preview dialog box (click the  Preview icon button and then click Preview in the Print dialog box)

The Mode settings in the Print dialog box are arranged to give you three levels of control over the printer driver, as explained below.



The Mode settings are explained below:

<p><b>Automatic</b></p>	<p>When this mode is selected as the Mode setting in the Print dialog box, the printer driver takes care of all detailed settings based on the current Media Type and Ink settings. To make the Ink setting, click Color to print in color, or Black to print in black-and-white or grayscale. Depending on the media you choose in the Media Type list (while Automatic is selected), a slider appears to the right of the Mode options that lets you choose Quality or Speed. Select Quality when print quality is more important than speed.</p>
<p><b>PhotoEnhance</b></p>	<p>This mode provides a variety of image-correction settings that you can apply to your photos before printing. PhotoEnhance does not affect your original data. This mode is only available when printing 32-bit color data.</p>

<b>Custom</b>	The Custom mode offers ready-made settings designed for printing text and graphs and for applying a color-matching method. You can also create and save your own custom settings using the Advanced settings.
---------------	---

In addition to making comprehensive Mode settings that affect overall print quality, you can also modify individual aspects of your printout using the settings contained in the Page Setup and the Layout dialog boxes.

## *Making the Media Type setting*


The Media Type setting determines what other settings are available, so you should always make this setting first.

In the Print dialog box, select the Media Type setting that matches the paper you loaded in the printer. To find out what media type you are using, find your media in the list from “Plain Paper” on page 76, and refer to the corresponding media type under which it is grouped (shown in larger type). For some media, there are several Media Type settings to choose from.




---

## *Previewing your printout*

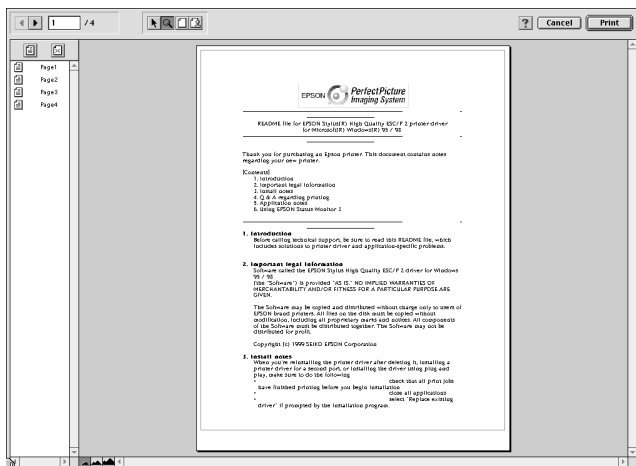
The Preview feature allows you to see how your document will look before actually printing it. Follow these steps to preview your document.

1. Make your printer driver settings.
2. Click the  Preview icon button in the Print dialog box. The Print button changes into a Preview button.

**Note:**

Use the  Print,  Preview, and  Save File modes. Click the icon to select the mode you want. For information on the Save File mode, see “Saving spool data as a file” in the online Reference Guide.

3. Click the Preview button. The Preview dialog box appears and displays a preview of your document.



The Preview dialog box contains six icon buttons that you can use to perform various functions. See online help for more details.

4. If you are satisfied with the previewed image, click Print.

If you are not satisfied with the appearance of the image, click Cancel. The Preview and Print dialog boxes close with the current print settings preserved. Open the Print dialog box again to make additional changes to the print settings.

# Replacing Ink Cartridges

---

## Replacing an Ink Cartridge

This printer uses ink cartridges equipped with IC chips. The IC chip accurately monitors the amount of ink used by each cartridge, so even if a cartridge is removed and later inserted again, all of its ink can be used. However, some ink is consumed each time the cartridge is inserted because the printer automatically checks reliability.

Refer to the appropriate section below for instructions.


## Using the printer's control panel


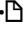
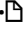

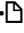
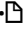


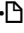
The printer's indicator lights will inform you when it is time to obtain a replacement ink cartridge and when it is time to replace an empty cartridge. You can also check ink levels and start the ink cartridge replacement procedure from your computer using the Status Monitor utility. See the online *Reference Guide* for more information.

This table describes the status of the lights on your printer and the actions you need to take.

Lights	Action
○ △ □	Obtain a replacement black (T017) or color (T018) ink cartridge.
● △ □	Replace the empty black or color ink cartridge.

● = on, ○ = flashing

To find out which ink cartridge is empty, check EPSON Status Monitor 3 (for Windows 98, 95, 2000, and NT 4.0) or EPSON StatusMonitor (for Macintosh). You can also tell which cartridge is empty by checking the speed at which the  error light flashes when the print head moves to the ink cartridge replacement position. See the table below.

Lights	Action
 	Replace the black ink cartridge if the  error light flashes at the same speed as the power light.
 	Replace the color ink cartridge if the  error light flashes at twice the speed of the  power light.
 	Replace both the black and the color ink cartridges if this light remains on.



**Warning:**

- ❑ *Keep ink cartridges out of the reach of children. Do not allow children to drink from or otherwise handle the cartridges.*
- ❑ *Be careful when you handle the used ink cartridges, as there may be some ink around the ink supply port. If ink gets on your skin, wash the area thoroughly with soap and water. If ink gets into your eyes, flush them immediately with water. If discomfort or vision problems remain after a thorough flushing, see a doctor immediately.*






**Caution:**

- ❑ *EPSON recommends the use of genuine EPSON ink cartridges. Other products not manufactured by EPSON may cause damage to your printer not covered by EPSON's warranties.*
- ❑ *Leave the old cartridge installed in the printer until you have obtained a replacement; otherwise, ink remaining in the print head nozzles may dry out.*
- ❑ *Do not refill the ink cartridges. The printer calculates the amount of ink remaining using an IC chip on the ink cartridge. Even if the cartridge is refilled, the amount of ink remaining will not be recalculated by the IC chip and the amount of ink available for use will not change.*

**Note:**

- ❑ *You cannot continue printing with one ink cartridge empty, even if the other cartridge still contains ink. Before printing, replace the empty cartridge.*
- ❑ *In addition to the ink used during document printing, ink is consumed during the print head cleaning operation and during the self-cleaning cycle which is performed when the printer is turned on, and during ink charging when the ink cartridge is installed in the printer.*

For more information about ink cartridges, see “When handling the ink cartridges” on page 3.

To replace an ink cartridge using the  ink cartridge replacement button, see the online *Reference Guide*.

**Note:**

*You can also view on-screen instructions for replacing an ink cartridge from your computer using EPSON Status Monitor. Click the HOW to button in the Status Monitor's Printer Status window, then follow the on-screen instructions.*



# Maintenance

---

## Checking the Print Head Nozzles

If you find that the printed image is unexpectedly faint or dots in the printed image are missing, you may be able to identify the problem by checking the print head nozzles.

You can check the print head nozzles from your computer using the Nozzle Check utility in the printer software, or from the printer itself by using the printer's control panel buttons. For more information about how to use the control panel buttons, see your online *Reference Guide*.

## Using the Nozzle Check utility

Refer to the appropriate section below to use the Nozzle Check utility.

**Note:**

*Do not use the Nozzle Check utility while printing is in progress; otherwise, your printout may be marred.*


### For Windows users

Follow the steps below to use the Nozzle Check utility.

1. Make sure that A4 or Letter size paper is loaded in the sheet feeder.
2. Click the Utility tab in the printer software, then click the Nozzle Check button.
3. Follow the on-screen instructions.

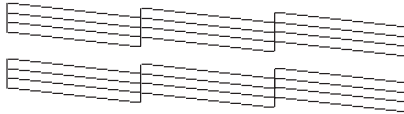
## For Macintosh users

Follow the steps below to use the Nozzle Check utility.

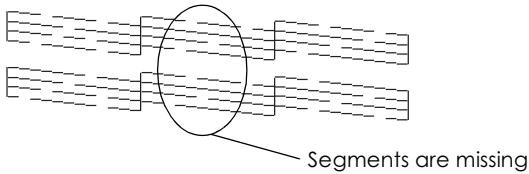
1. Access the Print or Page Setup dialog box and click the  Utility icon button, then click the Nozzle Check button in the Utility dialog box.
2. Follow the on-screen instructions.

The printer prints an operation check page that includes your printer's ROM version information, the ink counter code, and a nozzle check pattern. Below are sample printouts.

Good sample



Print head needs to be cleaned



The above sample is in black and white, but the actual test prints in color (CMYK).

If the nozzle check page does not print satisfactorily (for example, if any segment of the printed lines is missing), there is a problem with the printer. This could be a clogged ink nozzle or a misaligned print head. See the next section for details on cleaning the print head. For information on aligning the print head, see "Aligning the Print Head" on page 59.

---

## Cleaning the Print Head

If you find that the printed image is unexpectedly faint or dots in the printed image are missing, you may be able to solve these problems by cleaning the print head, which ensures that the nozzles are delivering ink properly.

You can clean the print head from your computer using the Head Cleaning utility in the printer software, or from the printer itself by using the printer's control panel buttons. For more information about how to use the control panel buttons, see your online *Reference Guide*.

### **Note:**

- ❑ *Print head cleaning uses both color and black ink. To avoid wasting ink, clean the print head only if print quality declines; for example, if the printout is blurry or the color is incorrect or missing.*
- ❑ *Use the Nozzle Check utility first to confirm that the print head needs to be cleaned. This saves ink.*
- ❑ *When the  $\Delta$  error light is flashing or on, you cannot clean the print head. Replace the appropriate ink cartridge first.*
- ❑ *Do not start the Head Cleaning or Nozzle Check utility while printing is in progress; otherwise, your printout may be marred.*

## Using the Head Cleaning utility

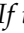
Refer to the appropriate section below to use the Head Cleaning utility.

### **For Windows users**

Follow the steps below to clean the print head using the Head Cleaning utility.

1. Make sure that the printer is on and the  $\Delta$  error light is off.



**Note:**

*If the  error light is flashing, you cannot clean the print head. Replace the appropriate ink cartridge first.*

2. Click the Utility tab in the printer software, then click the Head Cleaning button.
3. Follow the on-screen instructions.

### **For Macintosh users**

Follow the steps below to clean the print head using the Head Cleaning utility.

1. Make sure that the printer is on and the  error light is off.
2. Access the printer software and click the  Utility icon button in the Print or Page Setup dialog box, then click the Head Cleaning button.
3. Follow the on-screen instructions.

If the print quality still has not improved, one or both of your ink cartridges may be old or damaged and may need to be replaced. To replace an ink cartridge before it is empty, see “Replacing Ink Cartridges” in the online *Reference Guide*.

If print quality remains a problem after replacing the ink cartridges, contact your dealer.

**Note:**

*To maintain print quality, we recommend turning on the printer for at least one minute every month.*

---

## Aligning the Print Head

If you notice a misalignment of vertical lines, you may be able to solve this problem from your computer using the Print Head Alignment utility in your printer software. Refer to the appropriate section below.

**Note:**

*Do not start the Print Head Alignment utility while printing is in progress; otherwise, your printout may be marred.*


### For Windows users

Follow the steps below to align the print head using the Print Head Alignment utility.

1. Make sure that A4 or Letter size plain paper is loaded in the sheet feeder.
2. Click the Utility tab in the printer software, then click the Print Head Alignment button.
3. Follow the on-screen instructions to align the print head.

### For Macintosh users

Follow the steps below to align the print head using the Print Head Alignment utility.

1. Make sure that A4 or Letter size plain paper is loaded in the sheet feeder.
2. Access the printer software and click the  Utility icon button in the Print or Page Setup dialog box, then click the Print Head Alignment button.
3. Follow the on-screen instructions to align the print head.





# Troubleshooting

---

## **Online Problem Solving (not available for Windows 3.1)**

### **For Windows users**

The Problem Solver HTML manual provides you with tips to help solve any problems you may encounter when using your printer.

If you encounter a problem, access the Problem Solver in one of the following ways:

- From the Windows Start menu.

Click Start, point to Programs and then to Epson, then click ESC680 Problem Solver.

- From Status Monitor 3

Click Technical Support in the Status Monitor 3 dialog box.

- From your printer driver

Click Technical Support on the Main menu of the printer driver.

If you cannot solve your problem using the Problem Solver, contact Technical Support for assistance by clicking the Technical Support Web Site link in the Problem Solver.

## *For Macintosh users*

EPSON's Technical Support Web Site provides help with problems that cannot be solved using the troubleshooting information in your printer documentation.

To access Technical Support, insert the CD in the CD-ROM drive and double-click the Technical Support Web Site icon in the EPSON window.

---

## **Correcting USB Problems**

If you are having difficulty using your printer with a USB connection, read the information in this section.

### **Make sure that your computer is a Windows 98 or Windows 2000 pre-installed model**

Your computer must be a Windows 98 or Windows 2000 pre-installed model. You may not be able to install or run the USB Printer Driver on a computer which is not equipped with a USB port or which has been upgraded from Windows 95 to Windows 98 or 2000.

For details about your computer, contact your dealer.

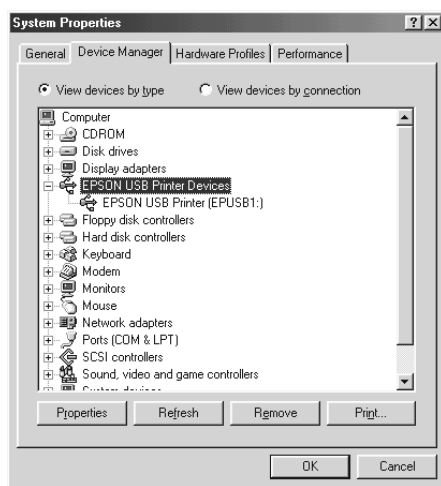
### **Make sure that EPSON USB Printer Devices appears on the Device Manager menu (for Windows 98 only)**

If you canceled the plug-and-play driver installation before the procedure was complete, either the USB printer device driver or the printer driver may be incorrectly installed.

Follow the steps below to check the installation and reinstall the drivers.

1. Turn the printer on. Plug the USB cable into the printer and the computer.
2. Right-click the My Computer icon on your desktop, then click Properties.
3. Click the Device Manager tab.

If your drivers are correctly installed, EPSON USB Printer Devices should appear on the Device Manager menu.



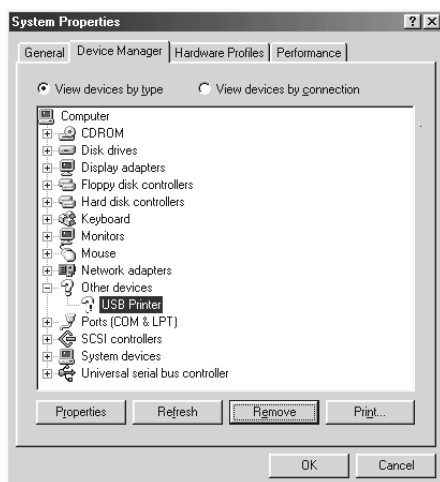
If EPSON USB Printer Devices does not appear on the Device Manager menu, click the plus (+) sign beside Other devices to view the installed devices.



If USB Printer appears under Other devices, the USB printer device driver is not installed correctly. If EPSON Stylus COLOR 680 appears, the printer driver is not installed correctly.

If neither USB Printer nor EPSON Stylus COLOR 680 appears under Other devices, click Refresh or unplug the USB cable from the printer, then plug it into the printer again.

4. Under Other devices, select USB Printer or EPSON Stylus COLOR 680 and click Remove. Then, click OK.



5. When the following dialog box appears, click OK. Then click OK to close the System Properties dialog box.



6. Turn off the printer and restart your PC. Then, reinstall the drivers from the beginning, following the instructions in the *Setup Guide*.

## **Printer does not work correctly with the USB cable**

If your printer does not work correctly with the USB cable, try one or more of these solutions:




- ❑ Use the USB cable (C83623\*) recommended in “System Requirements” on page 79.
- ❑ If you use a USB hub, connect the printer to the first tier of the hub, or connect the printer directly to the computer’s USB port.
- ❑ For Windows 98, try reinstalling the USB printer device driver and the printer software. First, uninstall EPSON Printer Software using the Add/Remove Programs utility in the Control Panel, then uninstall EPSON USB Printer Devices. Next, reinstall the software as described in *Setup Guide*. If EPSON USB Printer Devices is not registered in the Add/Remove Programs list, access the CD-ROM and double-click `epusbun.exe` in Win9x folder. Then follow the on-screen instructions.

---

## Error Indicators

You can identify many common printer problems using the lights on your printer's control panel. If your printer stops working and the lights are on or flashing, use the following table of panel light patterns to diagnose the problem, then follow the recommended corrective measures.

Lights	Problem and Solution	
● ◊ ◻	<b>Paper out</b>	
	No paper is loaded in the printer.	Check EPSON Status Monitor 3 or EPSON StatusMonitor. Load paper in the sheet feeder, then press the ◊ ◻ maintenance button. The printer resumes printing and the light goes out.
● ◊ ◻	<b>Paper jam</b>	
	Paper has jammed in the printer.	Check EPSON Status Monitor 3 or EPSON StatusMonitor. Press the ◊ ◻ maintenance button to eject the jammed paper. If the error does not clear, open the printer cover and remove all of the paper inside, including any torn pieces. Then, reload the paper in the sheet feeder and press the ◊ ◻ maintenance button to resume printing.
◊ ◻	<b>Ink low</b>	
	The black or color ink cartridge is nearly empty.	Obtain a replacement black (T017) or color (T018) ink cartridge. To see which cartridge is nearly empty, check the ink level using EPSON Status Monitor 3 or EPSON StatusMonitor.

	<b>Ink out</b>	
	The black or color ink cartridge is empty or not installed.	Replace the black (T017) or color (T018) ink cartridge with a new one. See "Replacing Ink Cartridges" on page 51 for details.
	<b>Wrong cartridge (black ink cartridge)</b>	
	<b>Carriage error</b>	
	The print head carriage is obstructed by jammed paper or other foreign material and cannot return to the home position.	Turn off the printer. Open the printer cover and remove any paper from the paper path by hand. Then, turn the printer back on.  If the error does not clear, contact your dealer.
	<b>Unknown printer error</b>	
	An unknown printer error has occurred.	Turn off the printer and contact your dealer.

● = on, ○ = off, ◌ = flashing

---

## Typical Problems and Solutions

Most printer problems have simple solutions. Find the problem in the list below and apply the recommended solution. For more information, see "Troubleshooting" in the online *Reference Guide*.

### Print quality problems

If you are having print quality problems, try the solutions offered for the problems listed below.

## ***Horizontal banding***

Try one or more of these solutions:

- Make sure the printable side of the paper is face up in the sheet feeder.
- Run the Nozzle Check utility. If any segments are missing in the nozzle check pattern, run the Head Cleaning utility to clear any clogged ink nozzles.

## ***Vertical misalignment***

Try one or more of these solutions:

- Make sure the printable side of the paper is face up in the sheet feeder.
- Run the Print Head Alignment utility.
- Clear the High Speed check box in the Advanced dialog box of your printer driver. For instructions, see the printer driver's online help.

## ***Color gaps***

Try one or more of these solutions:

- Make sure your paper is not damaged, dirty, or too old.
- Run the Head Cleaning utility to clear any clogged ink nozzles.
- Make sure there are no error messages displayed. If an error message indicates that the ink cartridges need replacing, click the How To button and follow the on-screen instructions.

## ***Blurry or smeared printout***

Try one or more of these solutions:



- ❑ Make sure the printable side of the paper is face up in the sheet feeder.
- ❑ Make sure your paper is not damaged, dirty, or too old.

## *Paper feed or paper jam problems*

If the printer does not feed paper, feeds multiple pages, or the paper is jammed, remove and reload the stack of paper, then press the  $\Delta$  button maintenance button. Also make sure the following:

- ❑ The paper isn't too old or creased.
- ❑ Paper isn't loaded above the arrow on the left edge guide.
- ❑ The edge guides are set correctly.
- ❑ The paper isn't too thin or rough. Use paper that meets the paper requirements for the printer. See the online *Reference Guide* for paper specifications.

### **Note:**

*The print quality of the first page printed after a paper jam may not be what you expect. If print quality is a problem, try printing the page again.*

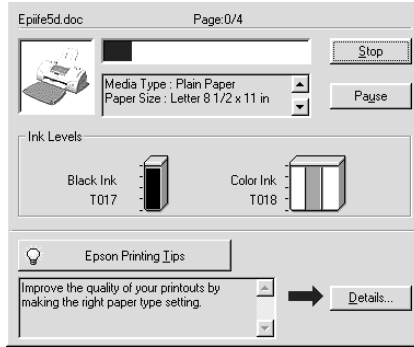
---

## **Canceling Printing**

If the printouts are not what you expected and contain incorrect or garbled characters or images, you may need to cancel printing. To cancel printing, follow the instructions in the appropriate section below.

## For Windows 98, 95, 2000, and NT 4.0 users

When you send a print job to the printer, the Progress Meter appears on your computer screen.




Click the Stop button to cancel printing.

## For Windows 3.1 users

When you send a print job to the printer, the Despooler appears on your computer screen.




Click the  Stop button to cancel printing.

## For Macintosh users


The procedure for canceling printing for Macintosh varies, depending upon whether background printing is on or off. Refer to the appropriate section below.

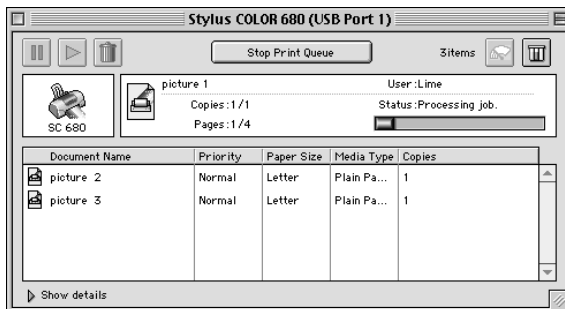
### When background printing is on

Follow the steps below to cancel a print job.

1. Select EPSON Monitor3 from the application menu.
2. Press the  power button to turn off the printer.





3. In the Document Name list, select the document which is printing, then click the  Stop icon button to cancel the print job.



### When background printing is off

Follow the steps below to cancel a print job.

1. Press the  power button to turn off the printer.
2. Hold down the  command key on your keyboard and press the period (.) key to cancel the print job.

## Using EPSON Spool Manager

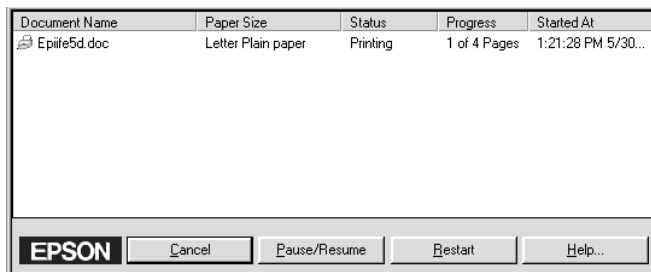
EPSON Spool Manager is similar to Windows Print Manager. If it receives two or more print jobs at one time, it holds them in the order that they were received (with printers on a network this may be called a print queue). When a print job reaches the top of the line, the EPSON Spool Manager sends the job to the printer. From the Spool Manager, you can view print status information about the print jobs which have been sent to your printer. You can also cancel, pause and resume, or restart selected print jobs.

### **Note:**

*EPSON Spool Manager is not available for Windows 2000, Windows NT, or Macintosh.*

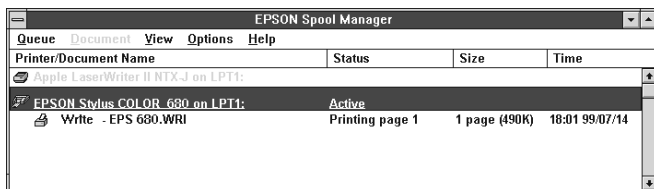
### For Windows 98 and 95

After you send a print job, an EPSON Stylus COLOR 680 button appears on the taskbar. Click this button to open the EPSON Spool Manager.



## For Windows 3.1

After you send a print job, the EPSON Spool Manager icon appears at the bottom of your desktop. Double-click this icon or the Spool Manager icon in the EPSON group to open EPSON Spool Manager. For more information, see online help.





# Consumable Products

## Consumable products

The following ink cartridges and EPSON special media are available for your printer.

### *Ink cartridges*

You can use the following cartridges with your printer.

Black ink cartridge	T017051
Color ink cartridge	T018051

**Note:**

*The product numbers of ink cartridges may vary by location.*

### *Media types*

EPSON offers specially-designed media for ink jet printers to meet most high-quality printing needs.

To make the Media Type setting in your printer driver, select the Media Type setting that matches the media that is loaded in the printer. To find out what media type you are using, find your media in the list below, and refer to the corresponding media type under which it is grouped (shown in larger type). For some media, there are several Media Type settings to choose from.

The available media types are listed below.

## Plain Paper

### Plain paper

#### Envelopes

EPSON Premium Ink Jet Plain Paper (A4) S041214

## 360 dpi Ink Jet Paper

EPSON 360 dpi Ink Jet Paper (A4) S041059

EPSON Iron-On Cool Peel Transfer Paper (A4) S041154

## Photo Quality Ink Jet Paper

EPSON Photo Quality Ink Jet Paper (A4) S041061

EPSON Photo Quality Ink Jet Cards (A6) S041054

EPSON Photo Quality Ink Jet Cards (5 × 8") S041121

EPSON Photo Quality Ink Jet Cards (8 × 10") S041122

EPSON Photo Quality Self Adhesive Sheets (A4) S041106

EPSON Ink Jet Note Cards A6 (with envelopes) S041147

EPSON Ink Jet Greeting Cards 5 × 8"  
(with envelopes) S041148

EPSON Ink Jet Greeting Cards 8 × 10"  
(with envelopes) S041149

## Matte Paper-Heavyweight

EPSON Matte Paper-Heavyweight (A4) S041259



Photo Paper

EPSON Photo Paper (A4)	S041140
EPSON Photo Paper (4 × 6")	S041134
EPSON Panoramic Photo Paper (210 × 594 mm)	S041145
EPSON Photo Paper Cards (A4)	S041177

Photo Quality Glossy Film

EPSON Photo Quality Glossy Film (A4)	S041071
EPSON Photo Quality Glossy Film (A6)	S041107
EPSON Photo Stickers 16 (A6)	S041144
EPSON Photo Stickers 4 (A6)	S041176

Ink Jet Transparencies

EPSON Ink Jet Transparencies (A4)	S041063
-----------------------------------	---------

Premium Glossy Photo Paper

EPSON Premium Glossy Photo Paper (A4)	S041297
---------------------------------------	---------

**Note:**

*The availability of special media varies by location.*



# Printer Specifications

---

## System Requirements

### Using the printer

Refer to the appropriate section below for the minimum and recommended computer system requirements necessary to use this printer.

### For Windows computers

To use your printer, you need Microsoft® Windows® 98, Windows® 95, Windows® 3.1, Windows® 2000, or Windows® NT 4.0 installed and the printer must be connected via a shielded, twisted-pair parallel cable. If you want to connect your printer to a USB port, you need a Windows 98 or Windows 2000 pre-installed PC equipped with a USB port and the printer must be connected via a standard, shielded USB cable.

Your computer should also meet the following system requirements.

Minimum System Requirements	Recommended System
i486/66 MHz for Windows 98 i486/25 MHz for Windows 95 and NT 4.0 i386/25 MHz for Windows 3.1 Pentium 133 MHz for Windows 2000	Pentium or higher processor for Windows 98, 95, 3.1, and NT 4.0 133 MHz or higher processor for Windows 2000
16 MB RAM for Windows 98, 95, 3.1, and NT 4.0 32 MB RAM for Windows 2000	32 MB RAM or more for Windows 98, 95, and 3.1 64 MB or more for Windows 2000 and NT 4.0

20 MB hard disk space for Windows 98, 95, and 3.1 40 MB for Windows 2000 and NT 4.0	50 MB or more hard disk space for Windows 98, 95, and 3.1 100 MB or more for Windows 2000 and NT 4.0
VGA monitor	VGA or better monitor

Your computer dealer can help you update your system if it does not meet these requirements.

### For Macintosh computers

To connect this printer to Apple® Macintosh® computers, you must use a USB cable.

Your Macintosh must also meet the following system requirements.

Minimum System Requirements	Recommended System
Mac OS 8.1	Mac OS 8.5.1 or later
8 MB of available memory 8 MB of available memory when background printing is turned on.	19 MB or more of available memory 32 MB of available memory when background printing is turned on.

#### Note:

- ❑ *The amount of available memory varies according to the number and kind of applications that are open. To see how much memory is available, choose About This Computer from the Apple menu and refer to the memory size (listed in kilobytes) under "Largest Unused Block" (1,024K=1 MB).*
- ❑ *The memory requirements above are for printing on Letter size paper. These requirements may vary depending on the size of the paper, the type of application you are using, and the complexity of the document that you want to print.*

In addition to these system and memory requirements, you need 10 MB of free hard disk space to install your printer software. To print, you also need extra hard disk space amounting to about twice the size of the file that you want to print.

## ***Using the online Reference Guide***

Refer to the appropriate section below for the minimum system requirements necessary to use the online *Reference Guide*.

### ***For Windows computers***

System	Microsoft Windows® 98, 95, 3.1, 2000 or NT 4.0
CPU	i486/66 MHz (for Windows 98) i486/25 MHz (for Windows 95 and NT 4.0) i386/25 MHz (for Windows 3.1) (Pentium or better recommended) Pentium 133 MHz for Windows 2000
Memory	16 MB for Windows 98, 95, 3.1, and NT 4.0 (32 MB or more recommended) 32 MB for Windows 2000
Hard disk space	5 MB to install the Reference Guide 45 MB to install Microsoft Internet Explorer
CD-ROM drive	Double-speed (quad-speed or faster recommended)
Display	640 × 480 pixel or 800 × 600 pixel resolution, with High Color (16 bit) or True Color (32 bit) setting
Browser	Web browser (Microsoft Internet Explorer 4.0 or later recommended)

*For Macintosh computers*

System	System 7.5.1 (System 7.6 or later recommended)
Memory	16 MB (32 MB or more recommended)
Hard disk space	4 MB to install the Reference Guide 15 MB to install Microsoft Internet Explorer
CD-ROM drive	Double-speed (quad-speed or faster recommended)
Display	640 × 480 pixel or 800 × 600 pixel resolution, with High Color (16 bit) or True Color (32 bit) setting
Browser	Web browser (Microsoft Internet Explorer 4.0 or later recommended)