

Where to Find Information

Setup Guide

This guide will help you set up and begin using your printer. It includes information on setting up your printer and installing the printer software.

Daily Use guide

This guide provides information on normal printer operation. It also contains troubleshooting tips and customer support information.

Reference Guide included on the CD-ROM

The Reference Guide contained on the CD-ROM included with your printer provides detailed information about printer software settings, printing on special paper, maintenance, and problem solving.

To open the *Reference Guide*, insert the printer software CD in the CD-ROM drive.

For Windows, select Online Guide in the Installer dialog box and click . Then, click View Reference Guide to open the guide.

Note:

It is possible to install the Reference Guide on your hard disk. See "Installing in Windows" in your Setup Guide for instructions.

All rights reserved. No part of this publication may be reproduced, stored in a retrieval system, or transmitted in any form or by any means, electronic, mechanical, photocopying, recording, or otherwise, without the prior written permission of SEIKO EPSON CORPORATION. The information contained herein is designed only for use with this EPSON printer. EPSON is not responsible for any use of this information as applied to other printers.

Neither SEIKO EPSON CORPORATION nor its affiliates shall be liable to the purchaser of this product or third parties for damages, losses, costs, or expenses incurred by the purchaser or third parties as a result of: accident, misuse, or abuse of this product or unauthorized modifications, repairs, or alterations to this product, or (excluding the U.S.) failure to strictly comply with SEIKO EPSON CORPORATION's operating and maintenance instructions.

SEIKO EPSON CORPORATION shall not be liable for any damages or problems arising from the use of any options or any consumable products other than those designated as Original EPSON Products or EPSON Approved Products by SEIKO EPSON CORPORATION.

SEIKO EPSON CORPORATION shall not be held liable for any damage resulting from electromagnetic interference that occurs from the use of any interface cables other than those designated as EPSON Approved Products by SEIKO EPSON CORPORATION.

EPSON is a registered trademark and EPSON Stylus is a trademark of SEIKO EPSON CORPORATION.

Microsoft and Windows are registered trademarks of Microsoft Corporation.

General Notice: Other product names used herein are for identification purposes only and may be trademarks of their respective owners. EPSON disclaims any and all rights in those marks.

Copyright © 2000 by SEIKO EPSON CORPORATION, Nagano, Japan.



Printed on Recycled Paper.

Contents

Safety Instructions	1
Important Safety Instructions	1
A Few Precautions	2
ENERGY STAR Compliance	4
Warnings, Cautions, and Notes	5
Setup Guide	7
Checking the Package Contents	7
Unpacking the printer	8
Attaching the Paper Support and the Output Tray	8
Connecting the Printer	9
Installing the Printer Software	10
Installing and Checking the Ink Cartridges	12
Printing Your First Page	14
Printer Parts and Functions	17
Printer Parts	17
Loading Special Paper, Envelopes, and Other Media	18
Loading Special Paper and Other Media	18
Loading Envelopes	20
Printing with Windows	22
Printer Software Introduction	22
Making Changes to Printer Settings	23
Previewing your printout	26
Getting Information Through Online Help	28
Checking Printer Status for Windows	29
Using EPSON Status Monitor 3	29

Replacing Ink Cartridges 30
Replacing an Empty Ink Cartridge 30

Maintenance 33
Checking the Print Head Nozzles 33
Cleaning the Print Head 34
Aligning the Print Head 35

Troubleshooting 36
Online Problem Solving 36
Correcting USB Problems 36
Error Messages 40
Typical Problems and Solutions 40
Cancelling Printing 42

Options and Consumable Products 45

Printer Specifications 49
System Requirements 49

Customer Support 51
Technical Support Web Site 51
Regional Customer Services 51

Safety Instructions

Important Safety Instructions

Read all of these instructions before using your printer. Also, be sure to follow all warnings and instructions marked on the printer.

- ❑ Do not block or cover the openings in the printer's cabinet. Do not insert objects through the slots.
- ❑ Take care not to spill liquid on the printer.
- ❑ Use only the type of power source indicated on the printer's label.
- ❑ Connect all equipment to properly grounded power outlets. Avoid using outlets on the same circuit as photocopiers or air control systems that regularly switch on and off.
- ❑ Avoid electrical outlets controlled by wall switches or automatic timers.
- ❑ Keep the entire computer system away from potential sources of electromagnetic interference, such as loudspeakers or the base units of cordless telephones.
- ❑ Do not use a damaged or frayed power cord.
- ❑ Unplug the printer's power cord from the electrical outlet when you do not use the printer for a long period of time.
- ❑ If you use an extension cord with the printer, make sure that the total ampere rating of the devices plugged into the extension cord does not exceed the cord's ampere rating. Also, make sure that the total ampere rating of all devices plugged into the wall outlet does not exceed the wall outlet's ampere rating.

- ❑ Do not attempt to service the printer yourself.
- ❑ Unplug the printer and refer servicing to qualified service personnel under the following conditions:

The power cord or plug is damaged; liquid has entered the printer; the printer has been dropped or the cabinet damaged; the printer does not operate normally or exhibits a distinct change in performance.

- ❑ If you plan to use the printer in Germany, the building installation must be protected by a 10 or 16 amp circuit breaker to provide adequate short-circuit protection and over-current protection for this printer.

Note for German-speaking users:

Bei Anschluss des Druckers an die Stromversorgung muss sichergestellt werden, dass die Gebäudeinstallation mit einer 10 A- oder 16 A-Sicherung abgesichert ist.

A Few Precautions

Take note of the following when using the printer, handling the ink cartridges, or choosing a location for the printer.

When using the printer

Observe the following:

- ❑ Do not put your hand inside the printer or touch the ink cartridges during printing.
- ❑ Do not move the print head by hand; otherwise, you may damage the printer.

- ❑ Before transporting the printer, make sure that the print head is in the home (far right) position and the ink cartridges are in place.

When handling the ink cartridges

Observe the following:

- ❑ Keep ink cartridges out of the reach of children. Do not allow children to drink from or otherwise handle the cartridges.
- ❑ Be careful when you handle the used ink cartridges, as there may be some ink around the ink supply port.
- ❑ If ink gets on your skin, wash it off with soap and water. If it gets in your eyes, flush them immediately with water. If discomfort or vision problems remain after a thorough flushing, see a doctor immediately.
- ❑ Do not shake an ink cartridge; this can cause leakage.
- ❑ Install the ink cartridge immediately after you remove it from its package. Leaving the cartridge unpacked for a long time before use may result in reduced print quality.
- ❑ Once you install an ink cartridge, do not open the clamp or remove the cartridge except to replace it with a new one. Otherwise, the cartridge may become unusable.
- ❑ Do not use an ink cartridge beyond the date printed on the cartridge carton. For best results, use up the ink cartridges within six months of installing them.
- ❑ Do not dismantle the ink cartridges or try to refill them. This could damage the print head.
- ❑ After bringing an ink cartridge inside from a cold storage site, allow it to warm up at room temperature for at least three hours before using it.

- ❑ Store ink cartridges in a cool, dark place.

When choosing a place for the printer

Observe the following:

- ❑ Place the printer on a flat, stable surface that extends beyond the printer base in all directions. The printer will not operate properly if it is tilted or at an angle.
- ❑ Leave enough space in front of the printer for paper to be ejected smoothly.
- ❑ Avoid places subject to rapid changes in temperature and humidity. Also, keep the printer away from direct sunlight, strong light, or heat sources.
- ❑ Avoid places subject to shocks and vibrations.
- ❑ Leave enough room around the printer to allow for sufficient ventilation.
- ❑ Avoid places subject to dust.
- ❑ Place the printer near a wall outlet where the plug can be easily unplugged.

Note for French-speaking users:

Placez l'imprimante près d'une prise de contact où la fiche peut être débranchée facilement.

ENERGY STAR Compliance

As an ENERGY STAR Partner, EPSON has determined that this product meets the ENERGY STAR guidelines for energy efficiency.

The International ENERGY STAR Office Equipment Program is a voluntary partnership with the computer and office equipment industry to promote the introduction of energy-efficient personal computers, monitors, printers, fax machines, copiers, and scanners in an effort to reduce air pollution caused by power generation.

Warnings, Cautions, and Notes



Warnings

must be followed carefully to avoid bodily injury.



Cautions

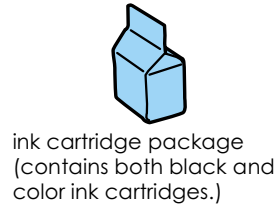
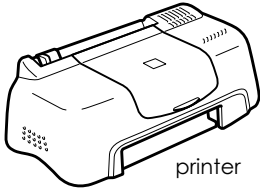
must be observed to avoid damage to your equipment.

Notes

contain important information and useful tips on the operation of your printer.

Setup Guide

Checking the Package Contents



The package contents may vary in certain locations.

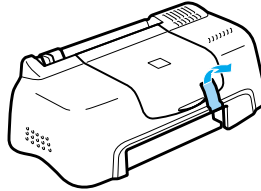
The ink cartridges packed with your printer are for initial setup. In order to maintain high quality printouts, your printer will use large quantities of ink during the setup process. As a result, the ink cartridges used for setup will empty faster than normal.

Follow the instructions in “Checking the Package Contents” through “Installing the Printer Software” in this manual to install the printer software. Then, proceed to “Installing and Checking the Ink Cartridges” to install the ink cartridges. To ensure that your printer is operating correctly, proceed to “Printing Your First Page” after an on-screen message informs you that setup is complete.

Unpacking the printer

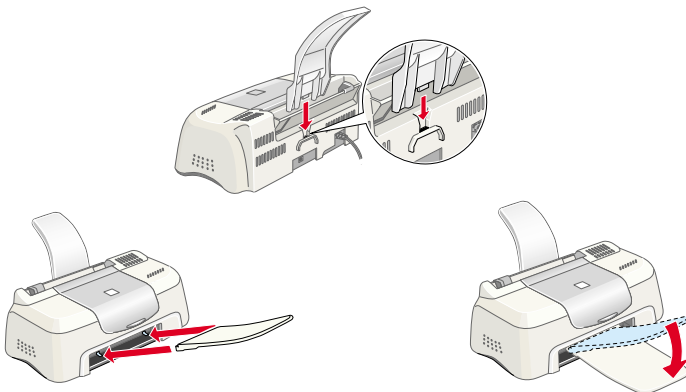
Remove all tape and protective materials attached to the printer.

*The number of tape strips used may vary from what is shown.



Attaching the Paper Support and the Output Tray

Insert the paper support into the slots at the rear of the printer, then insert the output tray into the slots at the front of the printer where the paper is ejected. Place the printer on a flat, stable surface. Leave enough space in front of the printer for the paper to be fully ejected.



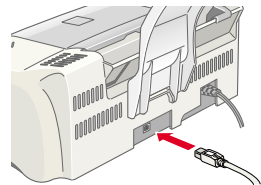
Connecting the Printer

Your printer connects to your computer via a standard, shielded USB cable. Make sure that the USB cable supports bidirectional communication. Otherwise, the printer will not work. Depending upon your geographic location, you may need to obtain the appropriate cable. See “Options and Consumable Products” in the *Daily Use* guide for details.

Follow these steps to connect the printer to your PC.

Note:

- ❑ *In order to connect your PC via the USB interface, your computer must be equipped with a USB port and must be a Windows Me, 98 or 2000 pre-installed model that comes with a USB port.*
 - ❑ *If you use a USB hub, we recommend that you connect the printer to the first tier of the hub, or connect directly to the computer’s USB port.*
1. Make sure that the computer is turned off, and the printer’s power cord is unplugged.
 2. Plug the appropriate end of the cable into the USB port on the back of the printer. (The end that fits the printer has a different shape from the end that fits the computer.)
 3. Connect the other end of the cable to the computer’s USB port.



Installing the Printer Software

After connecting the printer to your computer, you need to install the software included on the "Printer Software for EPSON Stylus COLOR 480SXU" CD-ROM shipped with your printer. Refer to the appropriate section below.

Note:

If you wish to make a floppy disk version of the printer software on your CD-ROM, you can use the driver disk creation utility included on the CD-ROM.

Installing in Windows

Follow the instructions in this section to install the printer software.


Note:

- ❑ *When using Windows 2000, you must follow the steps below to install the printer software; otherwise, Microsoft's Universal driver may be installed instead. To check if the Universal driver has been installed, open the Printers folder and right-click the icon for your printer. Select Printing Preferences on the shortcut menu that appears, then right-click anywhere in the driver. If About is displayed on the shortcut menu that appears, click it. A message box with the words "Unidrv Printer Driver" appears. You must reinstall the printer software as described below. If About is not displayed, the printer software has been installed correctly.*
 - ❑ *If the Digital Signature Not Found dialog box appears during the installation process, click Yes. If you click No, you must reinstall the printer software as described below.*
1. Make sure that your printer is unplugged.
 2. Turn on your computer and start Windows. If the New Hardware Found dialog box or any other wizard appears, click Cancel.

3. Insert the printer software CD shipped with your printer in the CD-ROM drive. The Installer dialog box appears. If it does not, double-click the My Computer icon, click the CD-ROM icon, then click Open on the File menu. Then, double-click Epsetup.exe. (For floppy disk users, insert the disk in a disk drive and double-click the My Computer icon, then the floppy disk drive icon, and then Setup.exe.)
4. Select Install Printer Driver/Utility, and click . Then click OK in the dialog box that appears to start the printer software installation. After the printer software installation is complete, the Problem Solver is automatically installed on your hard drive.



Note:

- ❑ *It is possible to install the Reference Guide on your hard drive from the Installer dialog box, as shown above. To install the guide, click Online Guide and then . Then, click Install Reference Guide and follow the on-screen instructions. When the installation is complete, an ESC480SXU Reference Guide icon appears in the EPSON folder. Double-click the icon to open the guide.*
 - ❑ *The Problem Solver provides tips and instructions to help you solve most problems that you may encounter when printing. The Problem Solver can be accessed through the Epson folder, Status Monitor 3, or the printer driver. For details, see the “Troubleshooting” section of your Daily Use guide.*
5. Follow the on-screen instructions to plug the power cord into a properly grounded electrical outlet. Before plugging in the cord, check the label on the back of the printer to make sure the voltage required by the printer matches that of the electrical outlet you will plugging it into. Also, make sure that you have the correct power cable for your power source.



Caution:

It is not possible to change the printer's voltage. If the rated voltage and your outlet voltage do not match, contact your dealer for assistance. Do not plug in the power cord.

Note:

If the power cord is not attached to the printer, connect it to the AC inlet on the back of the printer.

6. After plugging in the power cord, the Setup utility opens automatically. Follow the on-screen instructions. If a message instructs you to restart your computer, do so.



Note:

If you have difficulty installing the USB driver, see the "Troubleshooting" section of your Daily Use guide.

Installing and Checking the Ink Cartridges

After the printer software installation is complete, the Setup utility leads you through the ink cartridge installation process. Follow the on-screen instructions. When an on-screen message informs you that the ink cartridge installation is complete, click OK and proceed to "Printing Your First Page" .

Note:

- ❑ *After the setup process is complete, a printer-shaped shortcut icon appears on the Windows taskbar. For details on how to use this icon, see "Monitoring Preferences" in your online Reference Guide.*

- ❑ *If you are unable to install ink cartridges using the Setup utility, use EPSON Status Monitor 3 to install them. To access EPSON Status Monitor 3, right-click the printer shortcut icon on the taskbar and click EPSON Stylus COLOR 480SXU. Then, click the How to button.*

Installing the ink cartridges

Please observe the following when installing the ink cartridges.



Warning:

The ink cartridges are self-contained units. Under ordinary use, ink will not leak from a cartridge. If ink does get on your hands, wash them thoroughly with soap and water. If ink gets into your eyes, flush them immediately with water.



Caution:

- ❑ *You must remove the yellow tape seals from the cartridges before installing them; otherwise, the cartridges will become unusable.*
- ❑ *Do not remove the blue portion of the tape seals from the cartridges; otherwise, the cartridges may become clogged and unable to print.*
- ❑ *Do not remove the tape seals from the bottom of the cartridges; otherwise, ink will leak.*
- ❑ *Once you install the ink cartridges, do not open their clamps again until you replace the ink cartridges; otherwise, the cartridges may become unusable.*
- ❑ *Do not move the print head by hand; otherwise, you may damage the printer.*

Note:

- ❑ *Do not open the ink cartridge packages until just before you install them; otherwise, the ink may dry up.*

- ❑ *Install both ink cartridges. If either of the cartridges is not installed, the printer will not work.*

Checking the printer

To ensure high quality printing, we recommend that you check the printer nozzles and align the print head after installing the ink cartridges. If the Setup utility is already finished, use the Nozzle Check and Print Head Alignment utilities. You can access the utilities by clicking the Utility tab in the printer driver, or by right-clicking the printer shortcut icon on the task bar. Follow the on-screen instructions to use the Nozzle Check and Print Head Alignment utilities.

Printing Your First Page


After making sure that your printer is operating correctly, you are ready to print your first page. To familiarize yourself with the printer software, we recommend printing one of the sample files provided with your printer software. To print a sample file, follow the instructions in this section.

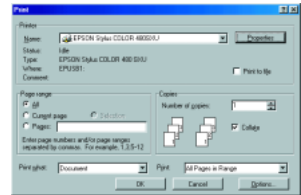
If you choose to print your own document instead, open the document in your application, then proceed to step 4 in the relevant section below, making changes where appropriate.

Note:

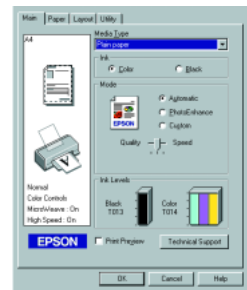
- ❑ *See your software manual for details on how to use your application.*
- ❑ *Depending on the type of document you are printing and the type of paper you are using, you may have to make settings different from those described in this section.*

Follow these steps to print the sample file.

1. Make sure that A4 or Letter size plain paper is loaded in the printer.
2. Insert the printer driver CD in the CD-ROM drive. If the Installer dialog box appears, click  Quit.
3. Double-click the My Computer icon, then right-click the CD-ROM drive icon and click Open on the menu that appears. Double-click the sample.bmp file to open it.
4. To change the printer driver settings, click Print or Print Setup on the File menu. A dialog box similar to the one below opens (This example is from Word).



5. Make sure that EPSON Stylus COLOR 480SXU is selected as the printer, then click Printer, Setup, Options, or Properties. You may need to click a combination of these buttons. The printer driver opens.
6. Click the Main tab, then click anywhere in the Media Type box and select Plain Paper.



Note:

The printer driver lets you choose from a wide variety of settings to get the best results. See your online Reference Guide for detailed information.

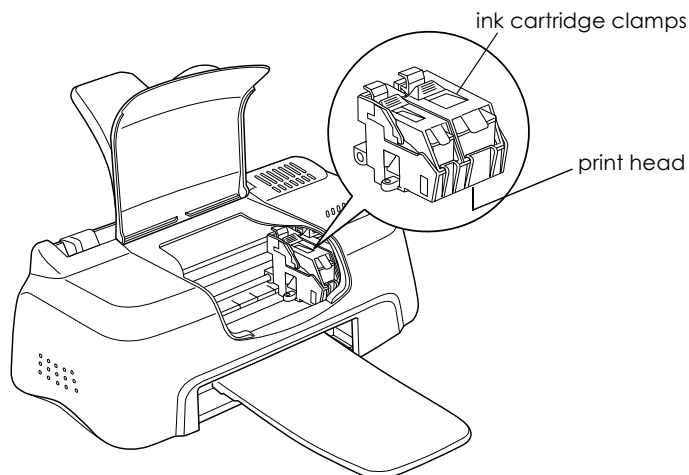
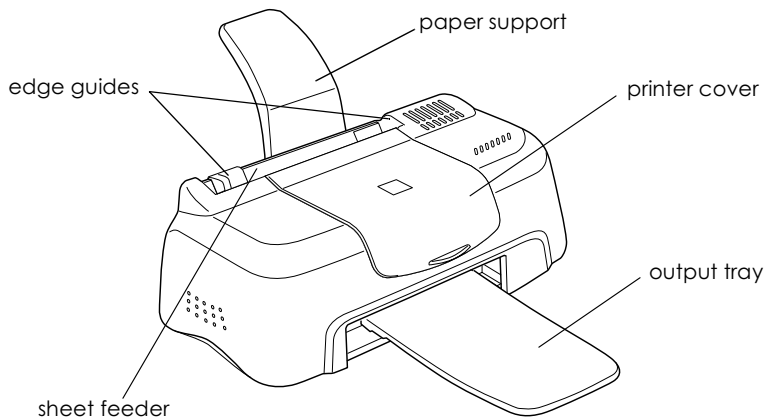
7. Click Close, Print, or OK to print. You may need to click a combination of these buttons.

While printing is in progress, the EPSON Progress Meter is displayed, showing the printing progress and the status of your printer.

The setup process for this printer is now complete. See the *Daily Use* guide for information on regular printer operation. See the *Reference Guide* that is included on the printer software CD-ROM for detailed information on making printer driver settings, printing on special paper, and troubleshooting.

Printer Parts and Functions

Printer Parts



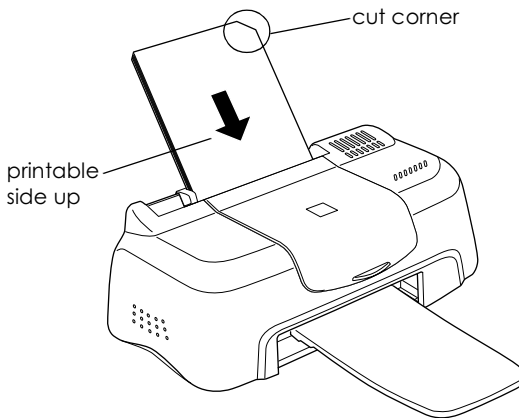
Loading Special Paper, Envelopes, and Other Media

Loading Special Paper and Other Media

You can print on a wide variety of special media, including ink jet paper, photo quality glossy film, photo paper, transparencies, index cards, and adhesive sheets.

When loading special media distributed by EPSON, read the instruction sheets packed with the media first and keep the following points in mind. For more details on using such media, see “Paper Handling” in the online *Reference Guide*.

- ❑ Make sure the printable side of the paper is facing up when loading media into the sheet feeder. See the instruction sheets packed with the media to determine which side is the printable surface. Some media have cut corners to help identify the correct loading direction, as shown in the illustration.



- ❑ Make sure the paper stack fits under the arrow mark located on the inside surface of the left edge guide.
- ❑ The loading capacities for EPSON special media are shown below.

360 dpi Ink Jet Paper and Photo Quality Ink Jet Paper	Up to 30 sheets.
Photo Quality Ink Jet Cards, Ink Jet Note Cards, and Ink Jet Greeting Cards	Up to 30 index cards. Always place the included support sheet* under the cards.
Photo Quality Glossy Film	One sheet at a time. For A4 or Letter size glossy film, always put a sheet of plain paper under the film. For A6 size glossy film, always put the included support sheet* under the film.
Ink Jet Transparencies	One sheet at a time. Always put a sheet of plain paper under the transparency.
Photo Quality Self Adhesive Sheets	One sheet at a time.
Photo Paper	One sheet at a time.
Photo Stickers 16 and Photo Stickers 4	One sheet at a time.
Panoramic Photo Paper and Iron-On Cool Peel Transfer Paper	One sheet at a time.
Matte Paper-Heavyweight	One sheet at a time.

* Take care not to print on support sheets loaded under special media.

About special media cleaning sheets

Cleaning sheets packaged with EPSON special media should not be used with this printer. The cleaning function performed by these sheets is not necessary with this type of printer, and the sheets could jam in the printer.

Loading Envelopes

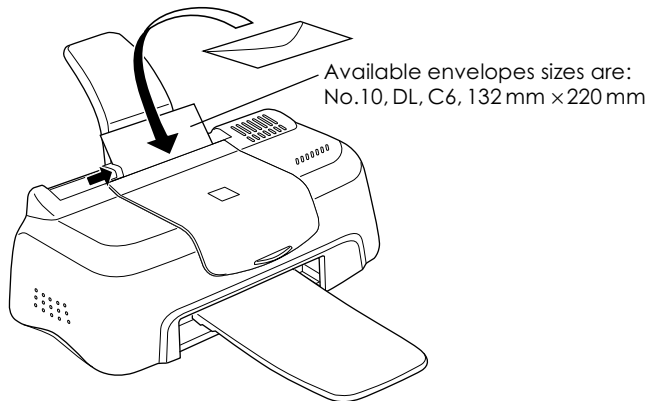
When printing on envelopes, please note the following:

- ❑ You can load up to 10 envelopes in the sheet feeder.

Note:

The folding quality and thickness of envelopes varies widely. If the total thickness of the stack of envelopes exceeds 10 mm, press each envelope in the stack flat before loading. If print quality declines when a stack of envelopes is loaded, load one envelope at a time.

- ❑ Load envelopes flap edge first with the flap side down, as shown in the illustration.



- ❑ Do not use envelopes that are curled or folded. Flatten the envelope flaps before loading. Avoid using envelopes that are too thin; they may curl during printing.
- ❑ Select Plain Paper as the Media Type setting in the printer driver.

Printing with Windows

Printer Software Introduction

The printer software which comes with your printer includes a printer driver and printer utilities. The printer driver lets you choose from a wide variety of settings to get the best results from your printer. The printer utilities help you check the printer and keep it in top operating condition.

If you encounter any problems, refer to the Problem Solver HTML manual for help by clicking Technical Support on the Main menu of the printer driver.

Getting more information

For information on using the printer driver, see “Making Changes to Printer Settings” on page 23.

For information on using the printer utilities, see “Using the Printer Utilities” in the online *Reference Guide*.

Note:

The specific features available in the printer software vary depending on the version of Windows that you are using.

Online help provides more information about the printer software. See “Getting Information Through Online Help” on page 28 for instructions on accessing help.

Accessing the printer software

You can access the printer software from most Windows applications, or from the Windows Start menu.

When you access the printer software from a Windows application, the settings that you make apply only to the application you are using.

When you access the printer software from the Start menu, the settings that you make apply to all of your Windows applications.

Refer to the appropriate section below.

From Windows applications

Follow the steps below to access the printer software.

1. From the File menu, click Print or Print Setup.
2. In the dialog box that appears, click Printer, Setup, Options, or Properties. (Depending on your application, you may need to click a combination of these buttons.) The printer driver opens.

From the Windows Start menu

Follow the steps below to access the printer software.

1. Click Start, point to Settings, then click Printers.
2. For Windows Me and 98 users, select your printer, then click Properties on the File menu. For Windows 2000, select your printer, then click Printing Preferences on the File menu. The printer driver opens.

Making Changes to Printer Settings

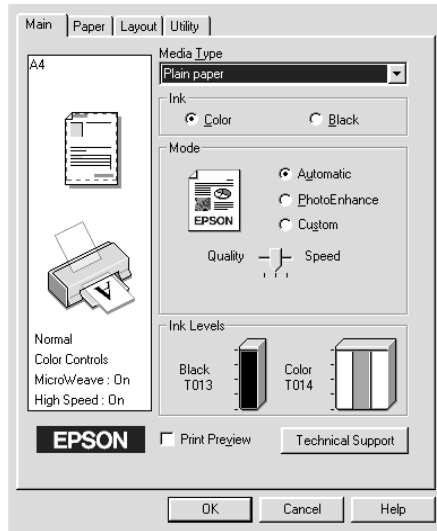
The printer driver features the following menus and settings.

Main: Media Type, Ink, Mode, Print Preview

Paper: Paper Size, Copies, Orientation, Printable Area

Layout: Reduce/Enlarge, Multi-Page, Watermark

The Mode settings on the Main menu are arranged to give you three levels of control over the printer driver, as explained below.



Automatic	<p>When this mode is selected, the printer driver takes care of all detailed settings based on the current Media Type and Ink settings. To make the Ink setting, select Color to print in color, or Black to print in black-and-white or grayscale.</p> <p>Depending on the media selected in the Media Type list (while Automatic is selected), a slider appears under the Custom radio button that lets you choose between Quality and Speed settings. Select Quality when print quality is more important than speed.</p>
------------------	------------------------------------------------------------------------------------------------------------------------------------------------------------------------------------------------------------------------------------------------------------------------------------------------------------------------------------------------------------------------------------------------------------------------------------------------------------------------------------------------------------------------------

PhotoEnhance	This mode provides a variety of image-correction settings that you can apply to your photos before printing. PhotoEnhance does not affect your original data. This mode is only available when printing, 16-, 24-, or 32-bit color data.
Custom	The Custom mode lets you apply a color-matching method. You can also create and save your own custom settings using the settings in the Advanced dialog box.

In addition to making comprehensive Mode settings that affect overall print quality, you can also modify individual aspects of your printout using the Paper and Layout menus. For more information about the Paper and Layout menus, see your online *Reference Guide*.

Note:

To make the Mode setting using the printer-shaped icon on the Windows taskbar, right-click the icon and select Printer Settings from the shortcut menu that appears.

Making the Media Type setting

The Media Type setting determines what other settings are available, so you should always make this setting first.

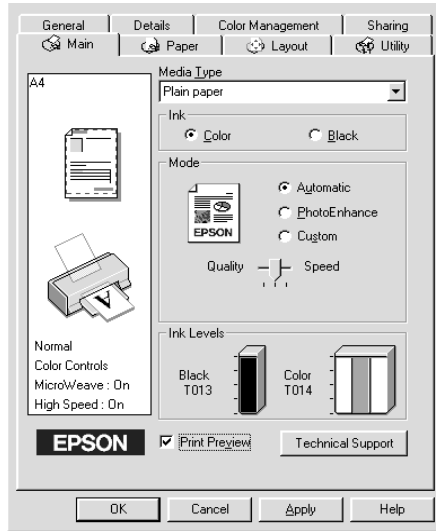
Note:

To make the Media Type setting using the printer-shaped icon on the Windows taskbar, right-click the icon and select Printer Settings from the menu that appears.

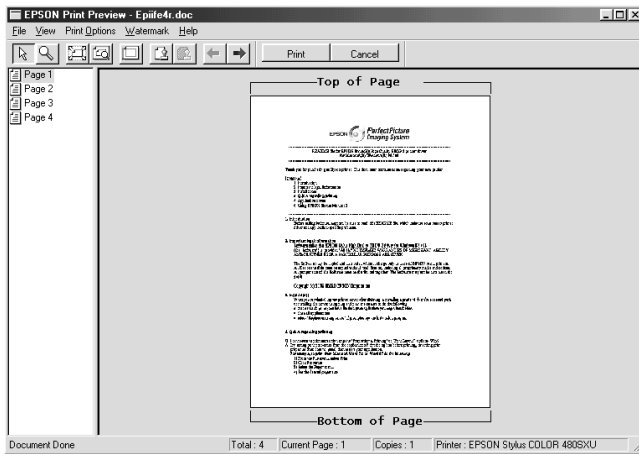
On the Main menu, select a Media Type setting that matches the media that is loaded in the printer. To find out what Media Type you are using, find your media in the list found under “Media types” on page 46, and refer to the corresponding Media Type under which it is grouped (shown in larger type). For some media, there are several Media Type settings to choose from.

Previewing your printout

Select the Print Preview check box on the Main menu when you wish to view a preview of your document before printing.



When you send a print job to the printer, the Print Preview window opens, allowing you to make changes before printing.



The Preview dialog box contains several icon buttons which you can use to perform a number of functions. See online help for details.

You can also manipulate the previewed document in the following ways:

- Select and preview individual pages.
- Reduce or enlarge the size of the preview.
- Select and print any or all pages.
- Apply watermarks. The watermark that you select will be displayed in the previewed image. For detailed information on customizing watermarks, see “Printing a watermark on your document” in the online *Reference Guide*.

- ❑ Specify which pages in the document you would like to print using the Add and Remove features. To add or remove a page, click the page icon in the list at the left side of the preview window. Then, add or remove it using the commands in the Print Options menu.

After you have previewed the document, click Print to print the document, or click Cancel to cancel printing.

Getting Information Through Online Help

Your printer software has an extensive online help feature, which provides you with instructions on printing, making printer driver settings, and using printer utilities.

Accessing help from your application

Open the File menu and choose Print or Print Setup. Then click Printer, Setup, Options, or Properties. (Depending on your application, you may need to click a combination of these buttons.) Click Help at the bottom of the Main, Paper, Layout, and Utility menus for help related to the items on that menu.

You can get specific help related to any item on a menu by right-clicking the item, then clicking the What's This? command.

Accessing help from the Windows Start menu

Click the Start button, point to Programs and Epson (for Windows Me and 98) or EPSON Printers (for Windows 2000), then click EPSON Stylus COLOR 480SXU Help. The help contents window opens.

Checking Printer Status for Windows

Using EPSON Status Monitor 3

EPSON Status Monitor 3 displays detailed information on the printer status.

Note:

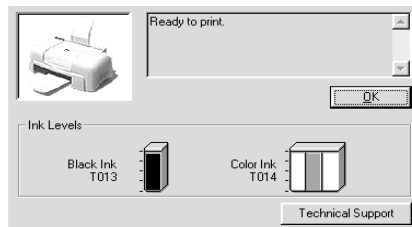
Before using EPSON Status Monitor 3, be sure to read its README file. To open this file, click Start, point to Programs and then Epson or EPSON Printers, then click EPSON Stylus COLOR 480SXU Readme.

Accessing EPSON Status Monitor 3

There are two ways to access EPSON Status Monitor 3.

- ❑ Double-click the printer-shaped shortcut icon on the Windows taskbar. See “Monitoring Preferences” on page 63 for details.
- ❑ Open the printer driver, click the Utility tab, then click EPSON Status Monitor 3.

When you access EPSON Status Monitor 3, the following window appears.

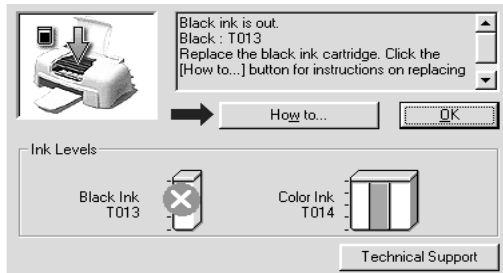


Replacing Ink Cartridges

Replacing an Empty Ink Cartridge

The Status Monitor 3 utility lets you monitor the remaining ink levels from your computer and view on-screen instructions for replacing an empty or nearly empty ink cartridge.

When an ink cartridge is empty or nearly empty, click the How to button in the Status Monitor window to move the print head to the ink cartridge replacement position. Follow the on-screen instructions to replace the cartridge.



For details, see “Using EPSON Status Monitor 3” on page 29.

Note:

If you need to replace an ink cartridge before it is empty, access the Ink Cartridge Replacement utility from the Utilities menu in your EPSON printer driver.

Please read the following information pertaining to ink cartridges and the print head before replacing the ink cartridges.

**Warning:**

- ❑ *Keep ink cartridges out of reach of children. Do not allow children to drink from or otherwise handle the cartridges.*
- ❑ *If ink gets on your hands, wash them thoroughly with soap and water. If ink gets into your eyes, flush them immediately with water. If discomfort or vision problems remain after a thorough flushing, see a doctor immediately.*

**Caution:**

- ❑ *EPSON recommends the use of genuine EPSON ink cartridges. Other products not manufactured by EPSON may cause damage to your printer not covered by EPSON's warranties.*
- ❑ *Do not remove the used cartridge from the printer until you have obtained a replacement. Otherwise, the ink remaining in the print head nozzles may dry out.*
- ❑ *You must remove the yellow tape seal from a cartridge before installing it; otherwise, the cartridge will become unusable.*
- ❑ *Do not remove the blue portion of the tape seal from the top of the cartridge; otherwise, the print head may become clogged and unable to print.*
- ❑ *Do not remove the tape seals from the bottom of the cartridge; otherwise, ink will leak.*
- ❑ *Once you install the ink cartridges, do not open the ink cartridge clamps again until you replace the cartridges; otherwise, the cartridges may become unusable.*
- ❑ *Do not move the print head by hand; otherwise, you may damage the printer.*
- ❑ *When you remove an ink cartridge, be sure to install a new one; otherwise, you may damage the print head.*

Note:

- ❑ *You cannot continue printing with one ink cartridge empty, even if the other cartridge still contains ink. Before printing, replace the empty cartridge.*

- ❑ *In addition to the ink used during document printing, ink is consumed during print head cleaning, ink cartridge replacement, and the self-cleaning cycle which is performed when the printer is turned on.*

Maintenance

Checking the Print Head Nozzles

If you find that the printed image is unexpectedly faint or dots in the printed image are missing, you may be able to identify the problem by checking the print head nozzles.

You can check the print head nozzles from your computer using the Nozzle Check utility, accessed through the printer software. Windows users can also access the Nozzle Check utility using a shortcut icon.

Using the Nozzle Check utility

Refer to the section below to use the Nozzle Check utility.

Note:

- ❑ *Before using the utility, make sure that A4 or Letter size paper is loaded in the sheet feeder.*
- ❑ *Do not use the Nozzle Check utility while printing is in progress; otherwise, your printout may be marred.*

There are two ways to access the Nozzle Check utility:

- ❑ Right-click the printer-shaped icon on the Windows taskbar and click Nozzle Check on the shortcut menu that appears.
- ❑ Access the printer software and click the Utility tab, then click the Nozzle Check button.

After opening the utility, follow the on-screen instructions.

Cleaning the Print Head

If you find that the printed image is unexpectedly faint or dots in the printed image are missing, you may be able to solve these problems by cleaning the print head, which ensures that the nozzles are delivering ink properly.

You can clean the print head from your computer using the Head Cleaning utility, accessed through the printer software. Windows users can also access the Head Cleaning utility using a shortcut icon.

Note:

- ❑ *Print head cleaning uses both color and black ink. To avoid wasting ink, clean the print head only if print quality declines; for example, if the printout is blurry or colors are incorrect or missing.*
- ❑ *Use the Nozzle Check utility first to confirm that the print head needs to be cleaned. This saves ink.*
- ❑ *Do not start the Head Cleaning or Nozzle Check utility while printing is in progress; otherwise, your printout may be marred.*

Using the Head Cleaning utility

Refer to the section below to use the Head Cleaning utility.

Note:

If the Status Monitor 3 or Progress Meter displays a message indicating that the ink cartridges need replacing, you cannot clean the print head. Replace the appropriate ink cartridge first.

There are two ways to access the Head Cleaning utility:

- ❑ Right-click the printer-shaped icon on the Windows taskbar and click Head Cleaning on the shortcut menu that appears.

- ❑ Access the printer software and click the Utility tab, then click the Head Cleaning button.

After opening the utility, follow the on-screen instructions.

Aligning the Print Head

If you notice a misalignment of vertical lines, you may be able to solve this problem from your computer using the Print Head Alignment utility in your printer software. Windows users can also access the Print Head Alignment utility using a shortcut icon. Refer to the section below.

Note:

Do not start the Print Head Alignment utility while printing is in progress; otherwise, your printout may be marred.

There are two ways to access the Print Head Alignment utility:

- ❑ Right-click the printer-shaped icon on the Windows taskbar and click Print Head Alignment on the shortcut menu that appears.
- ❑ Access the printer software and click the Utility tab, then click the Print Head Alignment button.

After opening the utility, follow the on-screen instructions.

Troubleshooting

Online Problem Solving

The Problem Solver HTML manual provides you with tips to help you solve any problems you may encounter when using your printer.

If you encounter a problem, access the Problem Solver in one of the following ways:

- ❑ From the Windows Start menu

Click Start, point to Programs and then to Epson, then click ESC480SXU Problem Solver.

- ❑ From Status Monitor 3

Click Technical Support in the Status Monitor 3 dialog box.

- ❑ From your printer driver

Click Technical Support on the Main menu of the printer driver.

If you can not solve your problem using the Problem Solver, contact Technical Support for assistance by clicking the Technical Support Web Site link in the Problem Solver.

Correcting USB Problems

If you are having difficulty using your printer with a USB connection, read the information in this section.

Operating system

Your computer must be a Windows Me, or a Windows 98 pre-installed model, a Windows 2000 pre-installed model, or a Windows 98 pre-installed model that has been upgraded to Windows 2000. You may not be able to install or run the USB Printer Driver on a computer which is not equipped with a USB port or which has been upgraded from Windows 95 to Windows 98 or 2000. For Windows Me users, your computer must be a Windows Me pre-installed model or upgraded from Windows 98 pre-installed model.

For details about your computer, contact your dealer.

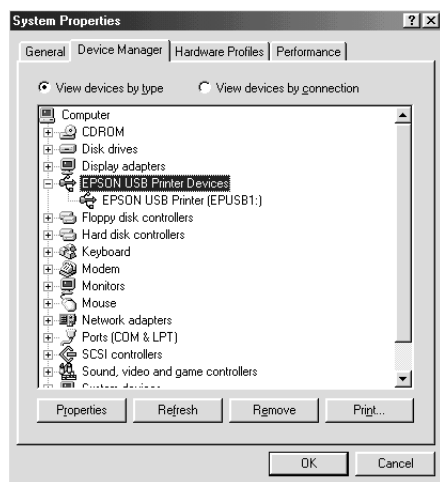
The Device Manager menu (for Windows Me and 98)

If you canceled the plug-and-play driver installation before the procedure was completed, either the USB printer device driver or the printer driver may be incorrectly installed.

Follow the steps below to check the installation and reinstall the drivers.

1. Plug in the power cord and then plug the USB cable into the printer and the computer.
2. Right-click the My Computer icon on your desktop, then click Properties.
3. Click the Device Manager tab.

If your drivers are correctly installed, EPSON USB Printer Devices should appear on the Device Manager menu.



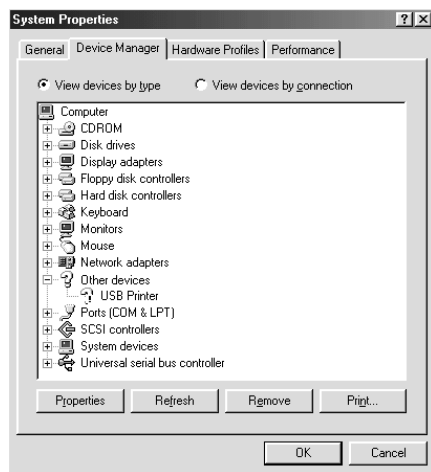
If EPSON USB Printer Devices does not appear on the Device Manager menu, click the plus (+) sign beside Other Devices to view the installed devices.



If USB Printer appears under Other Devices, the USB printer device driver is not installed correctly. If EPSON Stylus COLOR 480SXU appears, the printer driver is not installed correctly.

If neither USB Printer nor EPSON Stylus COLOR 480SXU appears under Other Devices, click Refresh or unplug the USB cable from the printer, then plug it into the printer again.

4. Under Other Devices, click USB Printer or EPSON Stylus COLOR 480SXU, then click Remove and then OK.



5. When the following dialog box appears, click OK. Then, click OK to close the System Properties dialog box.



6. Turn off the PC and unplug both the printer and the PC. Then, reinstall the drivers from the beginning, following the instructions in the *Setup Guide*.

Printer does not work correctly with the USB cable

If your printer does not work correctly with the USB cable, try one or more of these solutions:

- ❑ Use the USB cable (C83623*) recommended in “System Requirements” in the online *Reference Guide*.
- ❑ If you use a USB hub, connect the printer to the first tier of the hub, or connect the printer directly to the computer’s USB port.
- ❑ For Windows 98 users, try reinstalling the USB printer device driver and the printer software. First, uninstall EPSON Printer Software using the Add/Remove Programs utility in the Control Panel, then uninstall EPSON USB Printer Devices. Next, reinstall the software as described in *Setup Guide*. If EPSON USB Printer Devices is not registered in the Add/Remove Programs list, access the CD-ROM and double-click epusbun.exe in the Win 9x folder. Then follow the on-screen instructions.

Error Messages

The Status Monitor 3 utility provides status messages and a graphic display showing the current state of the printer.

If a problem occurs while printing, an error message appears in the Progress Meter window. Click the HOW TO button to have the Status Monitor provide instructions for dealing with the problem.

Typical Problems and Solutions

Most printer problems have simple solutions. Find the problem in the list below and apply the recommended solution. For more information, see “Troubleshooting” in the online *Reference Guide*.

Print quality problems

If you are having print quality problems, try the solutions offered for the problems listed below.

Horizontal banding

Try one or more of these solutions:

- Make sure the printable side of the paper is face up in the sheet feeder.
- Run the Nozzle Check utility. If any segments are missing in the nozzle check pattern, run the Head Cleaning utility to clear any clogged ink nozzles.

Vertical misalignment

Try one or more of these solutions:

- Make sure the printable side of the paper is face up in the sheet feeder.
- Run the Print Head Alignment utility.
- Clear the High Speed check box in the Advanced dialog box of your printer driver. See the printer driver's online help for instructions.

Color gaps

Try one or more of these solutions:

- Make sure your paper is not damaged, dirty, or too old.
- Run the Head Cleaning utility to clear any clogged ink nozzles.
- Make sure there are no error messages displayed. If an error message indicates that the ink cartridges need replacing, click the HOW TO button and follow the on-screen instructions.

Blurry or smeared printout

Try one or more of these solutions:

- Make sure the printable side of the paper is face up in the sheet feeder.
- Make sure your paper is not damaged, dirty, or too old.

Paper feed or paper jam problems

If the printer doesn't feed paper, feeds multiple pages, or the paper is jammed, an error message appears. Click the Eject button to eject any jammed paper. Also make sure of the following:

- The paper isn't too old or creased.
- Paper is not loaded above the arrow on the left edge guide.
- The edge guides are set correctly.
- The paper isn't too thin or rough. Use paper that meets the paper requirements for the printer. See the online *Reference Guide* for paper specifications.

Note:

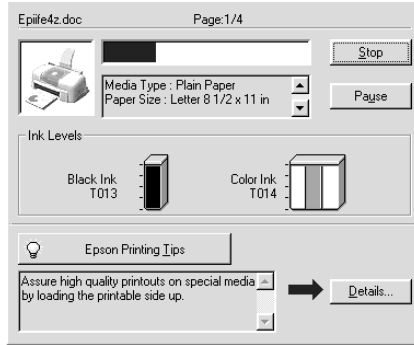
The print quality of the first page printed after a paper jam may not be what you expect. If print quality is a problem, try printing the page again.

Canceling Printing

If the printouts are not what you expected and contain incorrect or garbled characters or images, you may need to cancel printing. To cancel printing, follow the instructions in the section below.

Using the Progress Meter

When you send a print job to the printer, the Progress Meter appears on your computer screen.



Click the Stop button to cancel printing.

Using EPSON Spool Manager

EPSON Spool Manager is similar to Windows Print Manager. If it receives two or more print jobs at one time, it holds them in the order that they were received (with printers on a network this may be called a print queue). When a print job reaches the top of the line, the EPSON Spool Manager sends the job to the printer. From the Spool Manager, you can cancel print jobs that have been sent to the printer. You can also pause and resume or restart selected print jobs.

Note:

EPSON Spool Manager is not available for Windows 2000.

After you send a print job, an EPSON Stylus COLOR 480SXU button appears on the taskbar. Click this button to open the EPSON Spool Manager. To cancel a print job, select the appropriate job and click Cancel.

Options and Consumable Products

The following options and consumable products are available for your printer.

Options

EPSON supplies the following interface cable for your printer. However, you can use any interface cable that meets these specifications. See your computer manual for any additional requirements.

USB Interface Cable (shielded) C83623* from Series A4-pin (computer) to Series B4-pin (printer)

This cable supports bidirectional communication.

Note:

- ❑ *The asterisk (*) is a substitute for the last digit of the product number, which varies by location.*
- ❑ *Depending on your geographic location, this cable may not be supplied.*



Caution:

Use only interface cables which meet the specifications listed above. Using other cables not covered by EPSON warranties may cause the printer to malfunction.

Consumable products

The following ink cartridges and EPSON special media are available for your printer.

Ink cartridges

You can use the following cartridges with your printer.

Black ink cartridge	T013
Color ink cartridge	T014

Note:

The product numbers of ink cartridges may vary by location.

Media types

EPSON offers specially-designed media for ink jet printers to meet most high-quality printing needs.

To make the Media Type setting in your printer driver, select the Media Type setting that matches the media that is loaded in the printer. To find out what Media Type you are using, find your media in the list below, and refer to the corresponding Media Type under which it is grouped (shown in larger type). For some media, there are several Media Type settings to choose from.

The available media types are listed below.

Plain Paper

Plain paper

Envelopes

EPSON Premium Ink Jet Plain Paper (A4) S041214

360 dpi Ink Jet Paper

EPSON 360 dpi Ink Jet Paper (A4) S041059
S041025

EPSON 360 dpi Ink Jet Paper (Letter) S041060
S041028

EPSON Iron-On Cool Peel Transfer Paper (A4) S041154

EPSON Iron-On Cool Peel Transfer Paper (Letter) S041153
S041155

Photo Quality Ink Jet Paper

EPSON Photo Quality Ink Jet Paper (A4) S041061
S041026

EPSON Photo Quality Ink Jet Paper (Letter) S041062
S041029

EPSON Photo Quality Ink Jet Paper (Legal) S041067
S041048

EPSON Photo Quality Ink Jet Cards (A6) S041054

EPSON Photo Quality Ink Jet Cards (5 × 8") S041121

EPSON Photo Quality Ink Jet Cards (8 × 10") S041122

EPSON Photo Quality Self Adhesive Sheets (A4) S041106

EPSON Ink Jet Note Cards A6 (with envelopes) S041147

EPSON Ink Jet Greeting Cards 5 × 8"
(with envelopes) S041148

EPSON Ink Jet Greeting Cards 8 × 10"
(with envelopes) S041149

Matte Paper-Heavyweight

EPSON Matte Paper-Heavyweight (A4)	S041256 S041258 S041259
EPSON Matte Paper-Heavyweight (Letter)	S041257

Photo Paper

EPSON Photo Paper (A4)	S041140
EPSON Photo Paper (Letter)	S041141
EPSON Photo Paper (4 × 6")	S041134
EPSON Photo Paper (100 × 150 mm)	S041255
EPSON Photo Paper (200 × 300 mm)	S041254
EPSON Panoramic Photo Paper (210 × 594 mm)	S041145
EPSON Photo Paper Cards (A4)	S041177

Photo Quality Glossy Film

EPSON Photo Quality Glossy Film (A4)	S041071
EPSON Photo Quality Glossy Film (Letter)	S041072
EPSON Photo Quality Glossy Film (A6)	S041107
EPSON Photo Stickers 16 (A6)	S041144
EPSON Photo Stickers 4 (A6)	S041176

Ink Jet Transparencies

EPSON Ink Jet Transparencies (A4)	S041063
EPSON Ink Jet Transparencies (Letter)	S041064

Note:

The availability of special media varies by location.

Printer Specifications

System Requirements

To use your printer, you need to have Microsoft® Windows® Millennium Edition, Windows® 98, or Windows® 2000 installed and the printer must be connected via a standard, shielded USB cable.

Your computer should also meet the following system requirements.

Minimum System Requirements	Recommended System
Pentium 150 MHz Processor for Windows Me i486/66 MHz for Windows 98 Pentium 133 MHz for Windows 2000	Pentium 150 MHz or higher processor for Windows Me Pentium or better processor for Windows 98 133 MHz or higher processor for Windows Me and 2000
16 MB RAM for Windows 98 32 MB RAM for Windows Me and 2000	32 MB RAM or more for Windows 98 64 MB or more for Windows Me and 2000
20 MB hard disk space for Windows Me and 98 40 MB hard disk space for Windows 2000	50 MB or more hard disk space for Windows Me and 98 100 MB or more for Windows 2000
VGA monitor	VGA or better monitor

Your computer dealer can help you update your system if it does not meet these requirements.

Using the online Reference Guide

Refer to the appropriate section below for the minimum system requirements necessary to use the online *Reference Guide*.

System	Microsoft Windows® Millennium Edition, 98, or 2000
CPU	Pentium 150 MHz (for Windows Me) i486/66 MHz (for Windows 98) (Pentium or better recommended) Pentium 133 MHz for Windows 2000
Memory	16 MB for Windows 98 (32 MB or more recommended) 32 MB for Windows Me and 2000
Hard disk space	2 MB to install the <i>Reference Guide</i>
CD-ROM drive	Double-speed (quad-speed or faster recommended)
Display	640 × 480 pixel or 800 × 600 pixel resolution, with High Color (16 bit) or True Color (32 bit) settings
Browser	Web browser (Microsoft Internet Explorer 4.0 or later recommended)

Customer Support

Technical Support Web Site

EPSON's Technical Support Web Site provides help for problems that cannot be solved using the troubleshooting information in your printer documentation. If you have a Web browser and can connect to the Internet, access that site at:

<http://www.epson.com.tw/imaging/service/tech.htm>

Regional Customer Services

If your EPSON product is not operating properly and you cannot solve the problem using the troubleshooting information in your product documentation, contact customer support services for assistance. If customer support for your area is not listed below, contact the dealer where you purchased your product.

Customer support will be able to help you much more quickly if you provide the following information:

- Product serial number
(The serial number label is usually on the back of the product)
- Product model
- Product software version
(Click About, Version Info, or similar button in the product software)
- Brand and model of your computer
- Name and version of your computer operating system

- ❑ Names and versions of the applications you normally use with your product

For users in Australia

EPSON Australia wishes to provide you with a high level of customer service. In addition to this *User's Guide*, we provide the following sources for obtaining information:

Your dealer

Don't forget that your dealer can often help identify and resolve problems. The dealer should always be the first call for advice on problems. They can often solve problems quickly and easily as well as give you advice on the next step to take.

Internet URL <http://www.epson.com.au>

Access the EPSON Australia World Wide Web pages. Worth taking your modem here for the occasional surf! You can get the same information as offered on the EPSON FAXBACK and the EPSON Bulletin Board, plus more.

EPSON FAXBACK

EPSON FAXBACK will fax you the latest specifications and pricing for most EPSON products offered in Australia. There is also technical information including details of the latest software and drivers available. Phone (02) 9903 9075 and the system will guide you through a number of choices before faxing the information to your fax machine.

EPSON Helpdesk

EPSON Helpdesk is provided as a final backup to make sure that our clients have access to advice. Operators at the Helpdesk can aid you in diagnosing hardware and software problems. They can also advise you on the latest EPSON products and where the nearest dealer or service agent is located. Many types of queries are answered here.

The Helpdesk numbers are:

Phone: 1300 361 054

Fax: (02) 9903 9189

We encourage you to have all the relevant information on hand when you ring. The more information you prepare, the faster we can help solve the problem. This information includes the *User's Guide* for your EPSON product, type of computer, operating system, application programs, and any other information you feel is required.

For users in India

Contacts for information, support, and services are:

World Wide Web (www.epson.co.in)

Information on product specifications, drivers for download, Frequently Asked Questions (FAQ), Products Enquiry, and Technical Query are available.

Epson India Bangalore Head Office

Phone: 5321 266-70

Fax: 5581799/5321095

For users in Malaysia

Contacts for information, support, and services are:

World Wide Web (www.epson.com.my)

Information on product specifications, drivers for download, Frequently Asked Questions (FAQ), and Email Enquiries are available.

Epson Trading Shah Alam Head Office

Phone: 03 5191366

Fax: 03 5191281

For users in Singapore

Sources of information, support, and services available from Epson Singapore are:

World Wide Web (www.epson.com.sg)

Information on product specifications, drivers for download, Frequently Asked Questions (FAQ), Sales Enquiries, and Technical Support via e-mail are available.

Epson HelpDesk [phone: (065) 5863111]

Our HelpDesk team can help you with the following over the phone:

- Sales enquiries and product information
- Product usage questions or problem
- Enquiries on repair service and warranty

For users in Hong Kong

To obtain technical support as well as other after-sales services, users are welcome to contact EPSON Hong Kong Limited.

Internet home page

EPSON Hong Kong has established a local home page in both Chinese and English on the Internet to provide users with the following information:

- Product information

- ❑ Answers to Frequently Asked Questions (FAQs)
- ❑ Latest versions of EPSON product drivers

Users can access our World Wide Web home page at:

<http://www.epson.com.hk>

Electronic bulletin board system

An electronic bulletin board system (BBS) is also available to obtain product information and the latest versions of product drivers. You can log on to the following number for the BBS service:

BBS: (852) 2827-4244

Technical Support Hotline

You can also contact our technical staff at the following telephone and fax numbers:

Phone: (852) 2585-4399

Fax: (852) 2827-4383

For users in the Philippines

To obtain technical support as well as other after-sales services, users are welcome to contact the EPSON Philippines Representative Office at the telephone and fax numbers below:

Phone: (632) 813-6552

Fax: (632) 813-6545

BBS: (632) 814-0595

