

EPSON STYLUS™ COLOR 480SXU

Color Ink Jet Printer

All rights reserved. No part of this publication may be reproduced, stored in a retrieval system, or transmitted in any form or by any means, electronic, mechanical, photocopying, recording, or otherwise, without the prior written permission of SEIKO EPSON CORPORATION. The information contained herein is designed only for use with this EPSON printer. EPSON is not responsible for any use of this information as applied to other printers.

Neither SEIKO EPSON CORPORATION nor its affiliates shall be liable to the purchaser of this product or third parties for damages, losses, costs, or expenses incurred by the purchaser or third parties as a result of: accident, misuse, or abuse of this product or unauthorized modifications, repairs, or alterations to this product, or (excluding the U.S.) failure to strictly comply with SEIKO EPSON CORPORATION's operating and maintenance instructions.

SEIKO EPSON CORPORATION shall not be liable for any damages or problems arising from the use of any options or any consumable products other than those designated as Original EPSON Products or EPSON Approved Products by SEIKO EPSON CORPORATION.

SEIKO EPSON CORPORATION shall not be held liable for any damage resulting from electromagnetic interference that occurs from the use of any interface cables other than those designated as EPSON Approved Products by SEIKO EPSON CORPORATION.

EPSON is a registered trademark and EPSON Stylus is a trademark of SEIKO EPSON CORPORATION.

Microsoft and Windows are registered trademarks of Microsoft Corporation.

General Notice: Other product names used herein are for identification purposes only and may be trademarks of their respective owners. EPSON disclaims any and all rights in those marks.

Copyright © 2000 by SEIKO EPSON CORPORATION, Nagano, Japan.



Printed on Recycled Paper.

Contents

Printer Parts and Functions

Unpacking the Printer	1
Printer Parts	2

Safety Instructions

Important Safety Instructions	3
A Few Precautions	4
When using the printer	4
When handling the ink cartridges	5
When choosing a place for the printer	6
ENERGY STAR Compliance	7
For United Kingdom Users	7
Warnings, Cautions, and Notes	8

Chapter 1 Paper Handling

Loading Plain Paper	1-1
Loading Special Paper and Other Media	1-2
About special media cleaning sheets	1-5
Loading Envelopes	1-5
Using EPSON Photo Paper (4 x 6 inch, 200 x 300 mm)	1-6
Loading Photo Paper	1-6
Removing the perforated margins	1-7
Storing EPSON Photo Paper	1-10

Chapter 2 Printing with Windows

Printer Software Introduction	2-1
Getting more information	2-1
Accessing the printer software	2-2

Making Changes to Printer Settings	2-3
Making the Media Type setting	2-4
Using the Automatic mode	2-7
Using the PhotoEnhance mode	2-8
Using the Custom mode	2-9
Modifying the printout style	2-13
Making the Paper menu settings	2-14
Fitting your document to the paper size	2-15
Printing two or four pages on one sheet	2-16
Printing posters	2-17
Printing a watermark on your document	2-18
Previewing your printout	2-21
Using the Printer Utilities	2-24
Status Monitor 3	2-25
Nozzle Check	2-25
Head Cleaning	2-26
Print Head Alignment	2-26
Ink Cartridge Replacement	2-26
Speed & Progress	2-27
Monitoring Preferences	2-28
Getting Information Through Online Help	2-29
Accessing help from your application	2-30
Accessing help from the Windows Start menu	2-30
Increasing the Print Speed	2-30
General tips	2-30
Making the High Speed Copies setting	2-33

Chapter 3 Checking Printer Status and Managing Print Jobs for Windows

Using the Progress Meter	3-1
Using EPSON Spool Manager	3-3
Using EPSON Status Monitor 3	3-3
Accessing EPSON Status Monitor 3	3-4
Viewing information in EPSON Status Monitor 3	3-4

Chapter 4 Setting Up Your Printer on a Network

For Windows Me and 98 Users	6-1
Setting up your printer as a shared printer	6-1
Accessing the printer through a network	6-3
For Windows 2000 Users	6-5
Setting up your printer as a shared printer	6-5
Accessing the printer through a network	6-6

Chapter 5 Replacing Ink Cartridges

Replacing an Empty Ink Cartridge	7-1
Replacing an Old or Damaged Ink Cartridge	7-3
For Windows users.	7-4

Chapter 6 Maintenance

Checking the Print Head Nozzles.	8-1
Using the Nozzle Check utility.	8-1
Cleaning the Print Head.	8-2
Using the Head Cleaning utility.	8-2
Aligning the Print Head	8-4
Cleaning the Printer	8-5
Transporting the Printer.	8-6

Chapter 7 Troubleshooting

Correcting USB Problems.	9-1
Operating system	9-1
The Device Manager menu (for Windows Me and 98).	9-1
Printer does not work correctly with the USB cable	9-4
Diagnosing the Problem.	9-4
Cancelling Printing	9-5
Using the Progress Meter	9-5
Using EPSON Spool Manager	9-6
Print Quality Could Be Better	9-6

Horizontal banding	9-6
Vertical misalignment or banding	9-7
Color gaps	9-8
Incorrect or missing colors	9-8
Blurry or smeared printout	9-9
Printouts Are Not What You Expected	9-10
Incorrect or garbled characters	9-11
Incorrect margins	9-11
Inverted image	9-11
Blank pages print	9-11
Printout has smears on the bottom edge	9-12
Printing is too slow	9-12
Printer Doesn't Print	9-12
Paper Doesn't Feed Correctly	9-13
Paper doesn't feed	9-14
Multiple pages feed	9-14
The paper jams	9-15
Paper isn't ejected fully or is wrinkled	9-15

Chapter 8 Options and Consumable Products

Options	10-1
Consumable products	10-2
Ink cartridges	10-2
Media types	10-2

Appendix A Printer Specifications

Printing	A-1
Paper	A-1
Paper specifications	A-2
Printable area	A-4
Ink Cartridges	A-6
Mechanical	A-8
Electrical	A-8
Environmental	A-9
Safety Approvals	A-9

System RequirementsA-10

Appendix B Customer Support

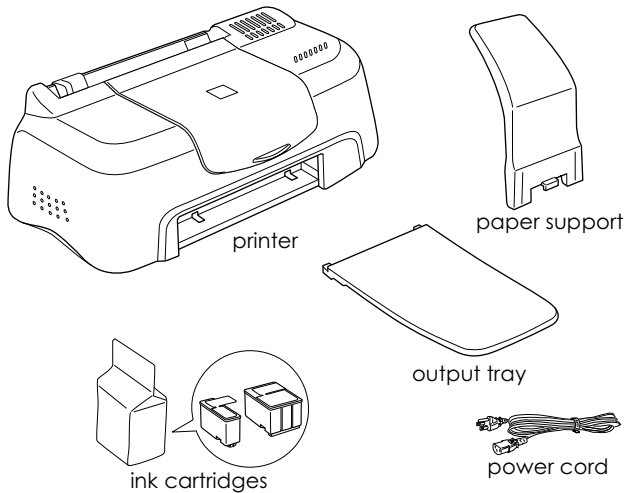
Technical Support Web Site1
Regional Customer Services.....1

Glossary

Printer Parts and Functions

Unpacking the Printer

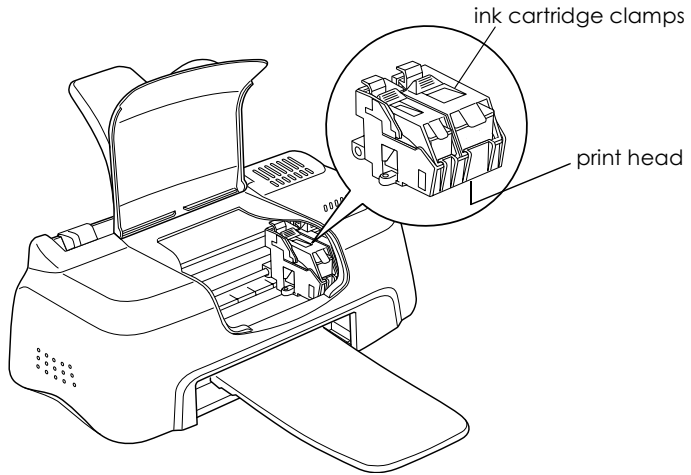
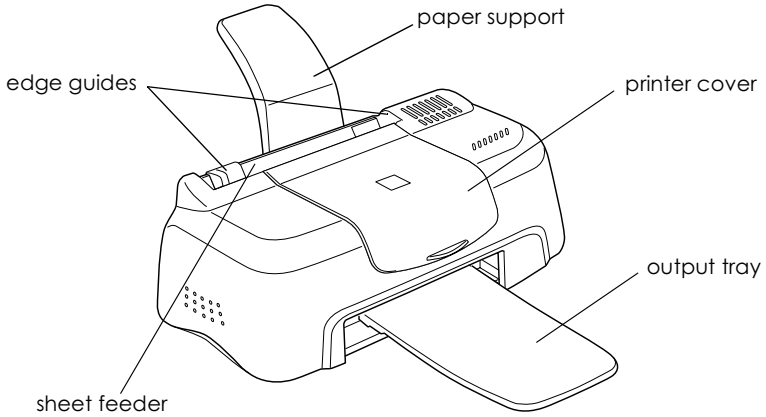
Your printer box should include a CD-ROM containing printer software that runs your printer, and the items shown in the illustration below.



In some locations, the power cord comes attached to the printer. The shape of the AC plug varies by country; be sure the plug included is the right shape for your location.

Remove all protective materials packed with your printer before setting up and plugging in the printer. Follow the instructions included with the printer to remove these materials. Save all packaging and protective materials for transporting the printer in the future.

Printer Parts



Safety Instructions

Important Safety Instructions

Read all of these instructions before using your printer. Also, be sure to follow all warnings and instructions marked on the printer.

- Do not block or cover the openings in the printer's cabinet. Do not insert objects through the slots.
- Take care not to spill liquid on the printer.
- Use only the type of power source indicated on the printer's label.
- Connect all equipment to properly grounded power outlets. Avoid using outlets on the same circuit as photocopiers or air control systems that regularly switch on and off.
- Avoid electrical outlets controlled by wall switches or automatic timers.
- Keep the entire computer system away from potential sources of electromagnetic interference, such as loudspeakers or the base units of cordless telephones.
- Do not use a damaged or frayed power cord.
- Unplug the printer's power cord from the electrical outlet when you do not use the printer for a long period of time.

- ❑ If you use an extension cord with the printer, make sure that the total ampere rating of the devices plugged into the extension cord does not exceed the cord's ampere rating. Also, make sure that the total ampere rating of all devices plugged into the wall outlet does not exceed the wall outlet's ampere rating.
- ❑ Do not attempt to service the printer yourself.
- ❑ Unplug the printer and refer servicing to qualified service personnel under the following conditions:

The power cord or plug is damaged; liquid has entered the printer; the printer has been dropped or the cabinet damaged; the printer does not operate normally or exhibits a distinct change in performance.

- ❑ If you plan to use the printer in Germany, the building installation must be protected by a 10 or 16 amp circuit breaker to provide adequate short-circuit protection and over-current protection for this printer.

Note for German-speaking users:

Bei Anschluss des Druckers an die Stromversorgung muss sichergestellt werden, dass die Gebäudeinstallation mit einer 10 A- oder 16 A-Sicherung abgesichert ist.

A Few Precautions

Take note of the following when using the printer, handling the ink cartridges, or choosing a location for the printer.

When using the printer

Observe the following:

- ❑ Do not put your hand inside the printer or touch the ink cartridges during printing.
- ❑ Do not move the print head by hand; otherwise, you may damage the printer.
- ❑ Before transporting the printer, make sure that the print head is in the home (far right) position and the ink cartridges are in place.

When handling the ink cartridges

Observe the following:

- ❑ Keep ink cartridges out of the reach of children. Do not allow children to drink from or otherwise handle the cartridges.
- ❑ Be careful when you handle the used ink cartridges, as there may be some ink around the ink supply port.
- ❑ If ink gets on your skin, wash it off with soap and water. If it gets in your eyes, flush them immediately with water. If discomfort or vision problems remain after a thorough flushing, see a doctor immediately.
- ❑ Do not shake an ink cartridge; this can cause leakage.
- ❑ Install the ink cartridge immediately after you remove it from its package. Leaving the cartridge unpacked for a long time before use may result in reduced print quality.
- ❑ Once you install an ink cartridge, do not open the clamp or remove the cartridge except to replace it with a new one. Otherwise, the cartridge may become unusable.
- ❑ Do not use an ink cartridge beyond the date printed on the cartridge carton. For best results, use up the ink cartridges within six months of installing them.

- ❑ Do not dismantle the ink cartridges or try to refill them. This could damage the print head.
- ❑ After bringing an ink cartridge inside from a cold storage site, allow it to warm up at room temperature for at least three hours before using it.
- ❑ Store ink cartridges in a cool, dark place.

When choosing a place for the printer

Observe the following:

- ❑ Place the printer on a flat, stable surface that extends beyond the printer base in all directions. The printer will not operate properly if it is tilted or at an angle.
- ❑ Leave enough space in front of the printer for paper to be ejected smoothly.
- ❑ Avoid places subject to rapid changes in temperature and humidity. Also, keep the printer away from direct sunlight, strong light, or heat sources.
- ❑ Avoid places subject to shocks and vibrations.
- ❑ Leave enough room around the printer to allow for sufficient ventilation.
- ❑ Avoid places subject to dust.
- ❑ Place the printer near a wall outlet where the plug can be easily unplugged.

Note for French-speaking users:

Placez l'imprimante près d'une prise de contact où la fiche peut être débranchée facilement.

ENERGY STAR Compliance



As an ENERGY STAR Partner, EPSON has determined that this product meets the ENERGY STAR guidelines for energy efficiency.

The International ENERGY STAR Office Equipment Program is a voluntary partnership with the computer and office equipment industry to promote the introduction of energy-efficient personal computers, monitors, printers, fax machines, copiers, and scanners in an effort to reduce air pollution caused by power generation.

For United Kingdom Users

Use of options

EPSON (UK) Limited shall not be liable against any damages or problems arising from the use of any options or consumable products other than those designated as Original EPSON Products or EPSON Approved Products by EPSON (UK) Limited.

Safety information



Warning:

This appliance must be earthed. Refer to the rating plate for voltage and check that the appliance voltage corresponds to the supply voltage.

Important:

The wires in the mains lead fitted to this appliance are coloured in accordance with the following code:

Green and yellow – Earth

Blue – Neutral

Brown – Live

If you have to fit a plug:

As the colours of the mains lead of this appliance may not match coloured markings used to identify the terminals in a plug, please proceed as follows:

The green and yellow wire must be connected to the terminal in the plug which is marked with the letter E or the earth symbol (\perp).

The blue wire must be connected to the terminal in the plug marked with the letter N.

The brown wire must be connected to the terminal in the plug marked with the letter L.

If damage occurs to the plug, replace the cord set or consult a qualified electrician.

Replace fuses only with a fuse of the correct size and rating.

Warnings, Cautions, and Notes

**Warnings**

must be followed carefully to avoid bodily injury.

**Cautions**

must be observed to avoid damage to your equipment.

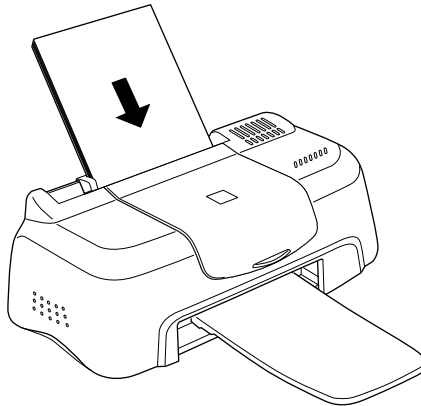
Notes

contain important information and useful tips on the operation of your printer.

Loading Plain Paper

Follow the steps below to load plain paper in the printer.

1. Slide the left edge guide so that the distance between the edge guides is slightly wider than the width of your paper.
2. Fan a stack of paper, then tap it on a flat surface to even the edges.
3. Load the stack of paper in the sheet feeder with the printable side up and the right edge of the paper resting against the right edge guide. Then, slide the left edge guide against the left edge of the paper.



Note:

- Always attach the output tray while printing.

- ❑ *Leave enough space in front of the printer for the paper to be fully ejected.*
- ❑ *Always load paper into the sheet feeder short edge first.*
- ❑ *Make sure the paper stack fits under the arrow mark inside the edge guide.*

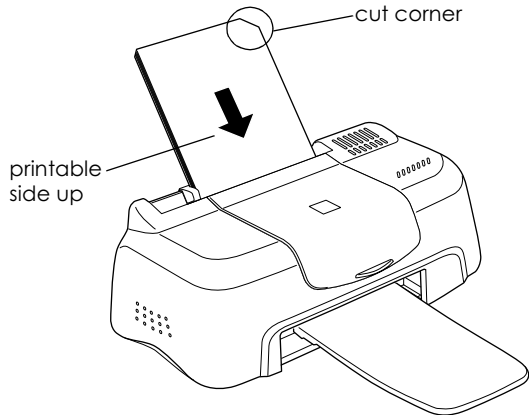
Loading Special Paper and Other Media

You can achieve good results with most types of plain bond paper. However, coated paper and glossy film result in higher quality printouts because these media absorb smaller amounts of ink.

EPSON provides special media that are formulated for the ink used in EPSON ink jet printers. EPSON recommends using media distributed by EPSON to ensure high-quality results. See “Media types” on page 8-2 for a complete list of these products.

When loading special media distributed by EPSON, read the instruction sheets packed with the media first and keep the following points in mind.

- ❑ Make sure the printable side of the paper is facing up when loading media into the sheet feeder. See the instruction sheets packed with the media to determine which side is the printable surface. Some media have cut corners to help identify the correct loading direction, as shown in the illustration.



Note:

If you extend the printable area by selecting Maximum as the Printable Area setting in the printer driver, the cut corner on special paper may mar your printout.

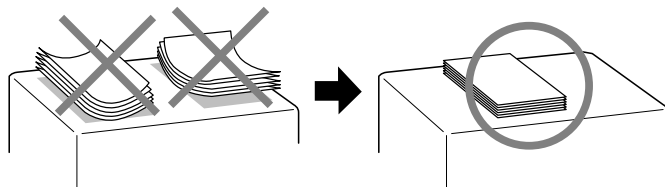
- ❑ Make sure the paper stack fits under the arrow mark located on the inside surface of the left edge guide.

- ❑ The loading capacities for EPSON special media are shown below.

360 dpi Ink Jet Paper and Photo Quality Ink Jet Paper	Up to 30 sheets.
Photo Quality Ink Jet Cards, Ink Jet Note Cards, and Ink Jet Greeting Cards	Up to 30 index cards. Always place the included support sheet* under the cards.
Photo Quality Glossy Film	One sheet at a time. For A4 or Letter size glossy film, always put a sheet of plain paper under the film. For A6 size glossy film, always put the included support sheet* under the film.
Ink Jet Transparencies	One sheet at a time. Always put a sheet of plain paper under the transparency.
Photo Quality Self Adhesive Sheets	One sheet at a time.
Photo Paper	One sheet at a time.
Photo Stickers 16 and Photo Stickers 4	One sheet at a time.
Panoramic Photo Paper and Iron-On Cool Peel Transfer Paper	One sheet at a time.
Matte Paper-Heavyweight	One sheet at a time.

* Take care not to print on support sheets loaded under special media.

- ❑ If the paper is curled, flatten it or curl it slightly toward the opposite side before loading. Printing on curled paper may smear your printout, especially when printing with Maximum selected as the Printable Area setting.



If you wish to print on the reverse side of an Ink Jet Card with Maximum selected as the Printable Area setting, flatten the card or curl it slightly toward the opposite side before loading.

About special media cleaning sheets

Cleaning sheets packaged with EPSON special media should not be used with this printer. The cleaning function performed by these sheets is not necessary with this type of printer, and the sheets could jam in the printer.

Loading Envelopes

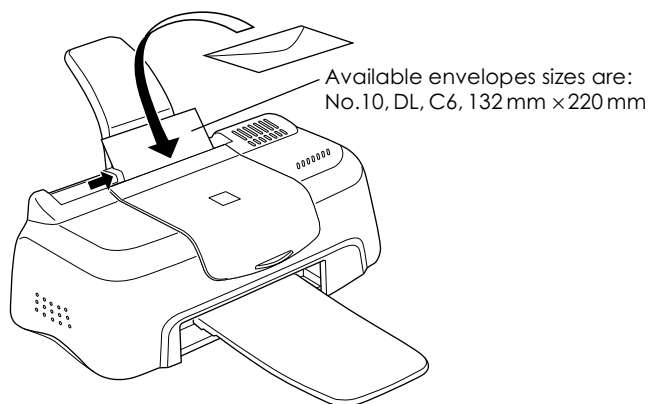
When printing on envelopes, please note the following:

- ❑ You can load up to 10 envelopes in the sheet feeder.

Note:

The folding quality and thickness of envelopes varies widely. If the total thickness of the stack of envelopes exceeds 10 mm, press each envelope in the stack flat before loading. If print quality declines when a stack of envelopes is loaded, load one envelope at a time.

- ❑ Load envelopes flap edge first with the flap side down, as shown in the illustration.



- ❑ Do not use envelopes that are curled or folded. Flatten the envelope flaps before loading. Avoid using envelopes that are too thin; they may curl during printing.
- ❑ Select Plain Paper as the Media Type setting in the printer driver.

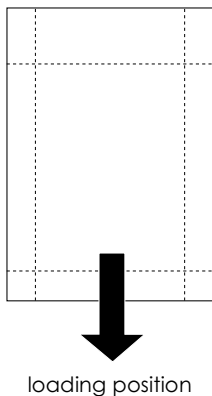
Using EPSON Photo Paper (4 x 6 inch, 200 x 300 mm)

EPSON Photo Paper (S041134, S041254) is perforated around the margins so you can trim your printed images to look like 4 x 6 inch (102 x 152 mm) or 200 x 300 mm photographs.

Loading Photo Paper

Note the following when loading EPSON Photo Paper.

- ❑ Load the paper printable side up with the perforated margins positioned as shown in the illustration.

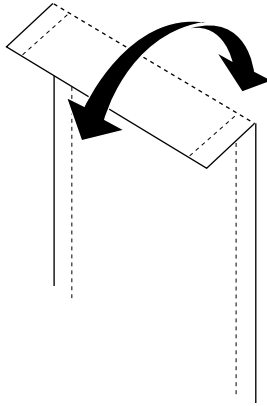


- ❑ Use flat, undamaged paper. If the paper is curled, flatten it before loading to avoid paper feeding problems.
- ❑ You can load up to one sheet of 4 × 6 inch Photo Paper or one sheet of 200 × 300 mm Photo Paper into the sheet feeder.
- ❑ Do not fold the paper before printing.
- ❑ Cut or tear the paper at the perforation only after printing.
- ❑ Select Photo Paper as the Media Type setting and Photo Paper 4 × 6 in or Photo Paper 200 × 300 mm as the Paper Size setting in your printer driver.

Removing the perforated margins

Note the following when removing the perforated margins.

- ❑ To remove the perforated margins, fold the paper back and forth a few times along the perforations, then carefully tear the margins off.

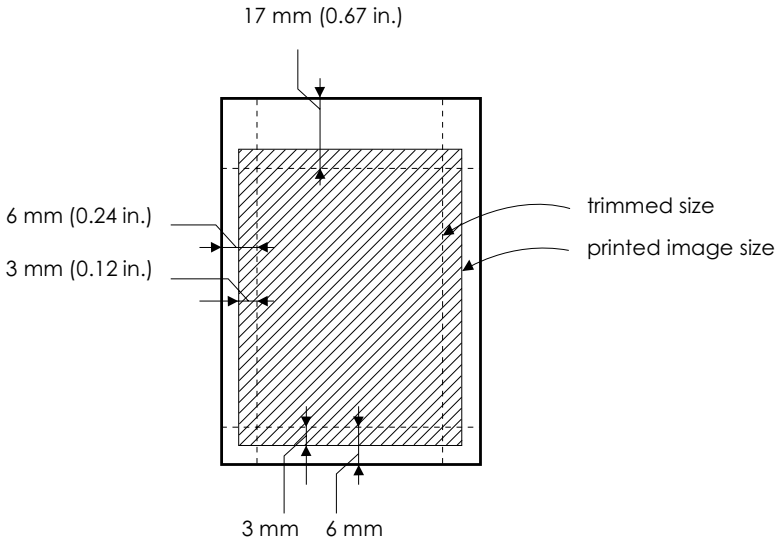


- ❑ You can also remove the margins by cutting along the perforations.

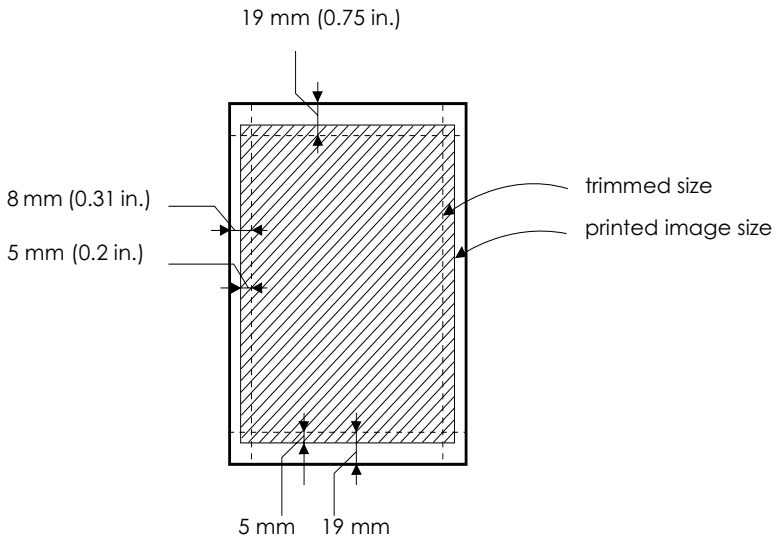
Note:

Keep in mind that the edges of your image might be cut off when you remove the perforated margins. See the illustrations below.

4 x 6 inch



200 x 300 mm



Storing EPSON Photo Paper

Keep the following points in mind when storing Photo Paper.

- ❑ Return unused paper to the original package as soon as you finish printing, and avoid storing it in places exposed to high temperature, humidity, or direct sunlight.
- ❑ EPSON recommends storing your printouts in a resealable plastic bag and keeping them away from high temperature, humidity, and direct sunlight.

Printer Software Introduction

The printer software which comes with your printer includes a printer driver and printer utilities. The printer driver lets you choose from a wide variety of settings to get the best results from your printer. The printer utilities help you check the printer and keep it in top operating condition.

If you encounter any problems, refer to the Problem Solver HTML manual for help by clicking Technical Support on the Main menu of the printer driver.

Getting more information

For information on using the printer driver, see “Making Changes to Printer Settings” on page 2-3.

For information on using the printer utilities, see “Using the Printer Utilities” on page 2-24.

Note:

The specific features available in the printer software vary depending on the version of Windows that you are using.

Online help provides more information about the printer software. See “Getting Information Through Online Help” on page 2-29 for instructions on accessing help.

Accessing the printer software

You can access the printer software from most Windows applications, or from the Windows Start menu.

When you access the printer software from a Windows application, the settings that you make apply only to the application you are using.

When you access the printer software from the Start menu, the settings that you make apply to all of your Windows applications.

Refer to the appropriate section below.

From Windows applications

Follow the steps below to access the printer software.

1. From the File menu, click Print or Print Setup.
2. In the dialog box that appears, click Printer, Setup, Options, or Properties. (Depending on your application, you may need to click a combination of these buttons.) The printer driver opens.

From the Windows Start menu

Follow the steps below to access the printer software.

1. Click Start, point to Settings, then click Printers.
2. For Windows Me and 98 users, select your printer, then click Properties on the File menu. For Windows 2000, select your printer, then click Printing Preferences on the File menu. The printer driver opens.

Making Changes to Printer Settings

The printer driver features the following menus and settings.

Main: Media Type, Ink, Mode, Print Preview

Paper: Paper Size, Copies, Orientation, Printable Area

Layout: Reduce/Enlarge, Multi-Page, Watermark

The Mode settings on the Main menu are arranged to give you three levels of control over the printer driver, as explained below.

Automatic	This mode provides the quickest and easiest way to start printing. See "Using the Automatic mode" on page 2-7 for details.
PhotoEnhance	This mode lets you choose from a variety of image-correction settings specially designed for photos. See "Using the PhotoEnhance mode" on page 2-8 for details.
Custom	This mode lets you apply a color matching method or make personalized settings suited to the kind of document that you want to print. Selecting Custom as the Mode setting enables both the Custom Settings list, from which you can select a color matching method, and the Advanced button, which allows access to the Advanced dialog box. See "Using the Custom mode" on page 2-9 for details.

In addition to making comprehensive Mode settings that affect overall print quality, you can also modify individual aspects of your printout using the Paper and Layout menus. See "Modifying the printout style" on page 2-13 for details.

Note:

To make the Mode setting using the printer-shaped icon on the Windows taskbar, right-click the icon and select Printer Settings from the shortcut menu that appears.

Making the Media Type setting

The Media Type setting determines what other settings are available, so you should always make this setting first.

Note:

To make the Media Type setting using the printer-shaped icon on the Windows taskbar, right-click the icon and select Printer Settings from the menu that appears.

On the Main menu, select a Media Type setting that matches the media that is loaded in the printer. To find out what Media Type you are using, find your media in the list below, and refer to the corresponding Media Type under which it is grouped (shown in larger type). For some media, there are several Media Type settings to choose from.

Plain Paper

Plain paper

Envelopes

EPSON Premium Ink Jet Plain Paper (A4) S041214

360 dpi Ink Jet Paper

EPSON 360 dpi Ink Jet Paper (A4) S041059
S041025

EPSON 360 dpi Ink Jet Paper (Letter) S041060
S041028

EPSON Iron-On Cool Peel Transfer Paper (A4) S041154

EPSON Iron-On Cool Peel Transfer Paper (Letter) S041153
S041155

Photo Quality Ink Jet Paper

EPSON Photo Quality Ink Jet Paper (A4) S041061
S041026

EPSON Photo Quality Ink Jet Paper (Letter) S041062
S041029

EPSON Photo Quality Ink Jet Paper (Legal) S041067
S041048

EPSON Photo Quality Ink Jet Cards (A6) S041054

EPSON Photo Quality Ink Jet Cards (5 × 8") S041121

EPSON Photo Quality Ink Jet Cards (8 × 10") S041122

EPSON Photo Quality Self Adhesive Sheets (A4) S041106

EPSON Ink Jet Note Cards A6 (with envelopes) S041147

EPSON Ink Jet Greeting Cards 5 × 8"
(with envelopes) S041148

EPSON Ink Jet Greeting Cards 8 × 10"
(with envelopes) S041149

Matte Paper-Heavyweight

EPSON Matte Paper-Heavyweight (A4)	S041256 S041258 S041259
EPSON Matte Paper-Heavyweight (Letter)	S041257

Photo Paper

EPSON Photo Paper (A4)	S041140
EPSON Photo Paper (Letter)	S041141
EPSON Photo Paper (4 × 6")	S041134
EPSON Photo Paper (100 × 150 mm)	S041255
EPSON Photo Paper (200 × 300 mm)	S041254
EPSON Panoramic Photo Paper (210 × 594 mm)	S041145
EPSON Photo Paper Cards (A4)	S041177

Photo Quality Glossy Film

EPSON Photo Quality Glossy Film (A4)	S041071
EPSON Photo Quality Glossy Film (Letter)	S041072
EPSON Photo Quality Glossy Film (A6)	S041107
EPSON Photo Stickers 16 (A6)	S041144
EPSON Photo Stickers 4 (A6)	S041176

Ink Jet Transparencies

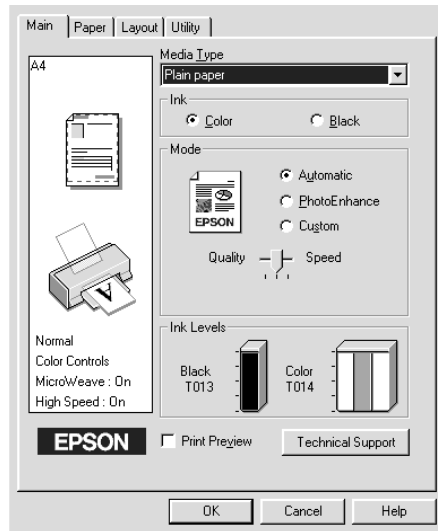
EPSON Ink Jet Transparencies (A4)	S041063
EPSON Ink Jet Transparencies (Letter)	S041064

Note:

The availability of special media varies by location.

Using the Automatic mode

When Automatic is selected as the Mode setting on the Main menu, the printer driver takes care of all detailed settings based on the current Media Type and Ink settings. To make the Ink setting, click **Color** to print in color, or **Black** to print in black-and-white or grayscale. To make the Media Type setting, see “Making the Media Type setting” on page 2-4.

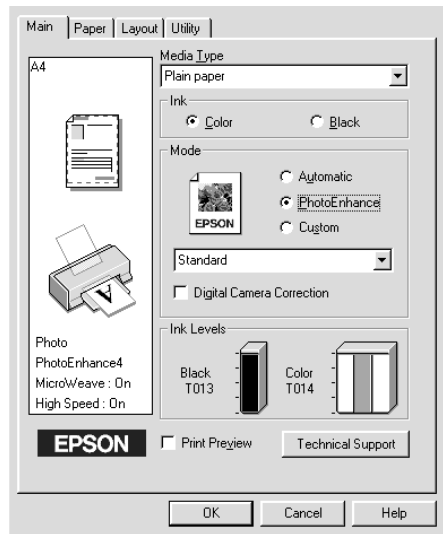


Note:

- ❑ Depending on the media selected in the Media Type list (while Automatic is selected), a slider appears under the Custom radio button that lets you choose from Quality or Speed settings. Select Quality when print quality is more important than speed.
- ❑ Most Windows applications feature paper size and page layout settings that override similar settings on the printer driver. However, if your application does not have these settings, verify the settings on the printer driver's Paper menu.

Using the PhotoEnhance mode

The PhotoEnhance mode provides a variety of image-correction settings that you can apply to your photo images before printing. PhotoEnhance does not affect your original data.



Note:

- ❑ *This mode is only available when printing 16-, 24-, or 32-bit color data.*
- ❑ *Printing with PhotoEnhance selected may increase the time required for printing, depending on your computer system and the amount of data contained in your image.*

You can select from the following settings.

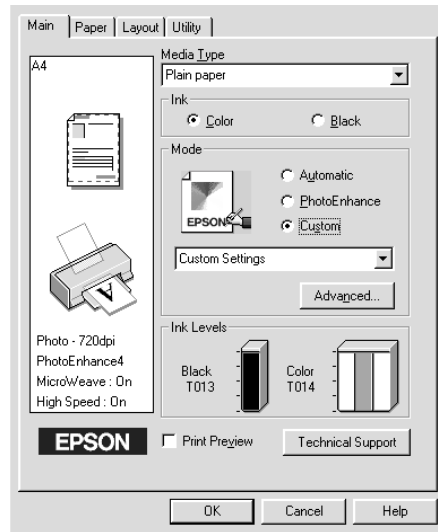
Standard	This setting provides standard image correction for most photos. Try this first.
People	This setting is best for photos of people.
Nature	This setting is best for outdoor scenery such as mountains, sky, and oceans.

Soft Focus	This setting makes your photos look as if they were taken with a soft-focus lens.
Sepia	This setting applies a sepia tone to your photos.

Selecting PhotoEnhance also enables the Digital Camera Correction check box. Select this check box when you are printing photos taken with a digital camera to give your printed images the smooth, natural appearance of photographs taken with a film camera.

Using the Custom mode

Selecting Custom as the Mode setting enables the Custom Settings list, from which you can select a color-matching method. Color-matching methods automatically adjust the colors produced by the printer to match the colors that appear on your screen. Selecting Custom as the Mode setting also enables the Advanced button. Click the Advanced button to open the Advanced dialog box, where you can create and save your own custom settings. Refer to the appropriate section below.



Selecting a color-matching method

You can select from the following color-matching methods:

ICM	This method automatically adjusts printout colors to match colors on your screen. ICM stands for Image Color Matching.
sRGB	This method is best for color matching with other sRGB devices.

To select a color-matching method, select Custom as the Mode setting on the Main menu. This enables the Custom Settings list. Click anywhere in the Custom Settings list box to open it, then select the most appropriate color-matching method. The color-matching method that you select will automatically adjust the colors produced by the printer to match the colors that appear on your screen.

Making settings in the Advanced dialog box

The settings in the Advanced dialog box give you complete control over your printing environment. Use these settings to experiment with new printing ideas, or to fine-tune a range of print settings to meet your individual needs. Once you are satisfied with your new settings, you can give them a name and add them to the Custom Settings list on the Main menu. Refer to the appropriate section below.

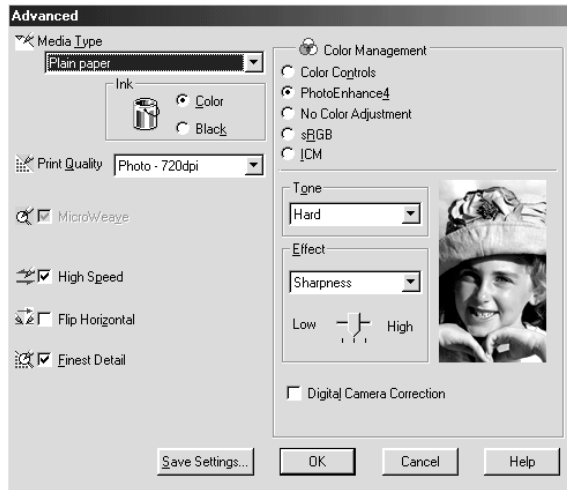
Making advanced settings

Follow the instructions in this section to make advanced settings.

Note:

The printer driver screens that appear in this procedure are for Windows Me and 98. The Windows 2000 printer driver screens differ only slightly.

1. Select Custom as the Mode setting on the Main menu, then click the Advanced button. The Advanced dialog box opens.



2. Select the Media Type that is loaded in the printer. For details, see “Making the Media Type setting” on page 2-4.
3. Choose Color or Black as the Ink setting.
4. Specify a Print Quality setting.
5. Make other settings as necessary. For details, see online help.

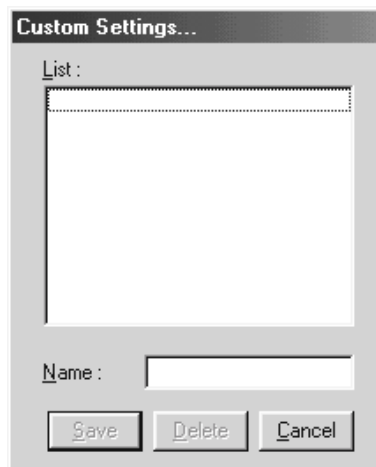
Note:

- ❑ *The PhotoEnhance feature only affects images, not text or graphs. For example, if Monochrome is selected from the Tone list (enabled when PhotoEnhance is selected), only the images in a document will be printed in monochrome. Any colored text or graphs in the same document will be printed in color.*
- ❑ *Some settings may be unavailable, depending on the Media Type, Ink, and Print Quality settings that you make.*

6. To save your advanced settings in the Custom Settings list for later use, see the next section. If you only wish to use these settings for the current print job, click OK to apply your settings and return to the Main menu. Click Cancel to return to the Main menu without applying your settings.

Saving and deleting advanced settings

To save your advanced settings in the Custom Settings list, click Save Settings in the Advanced dialog box. The Custom Settings dialog box opens.



Type a unique name for your advanced settings in the Name box, then click Save. Your settings are added to the Custom Settings list.

Note:

- ❑ *You cannot use the names of color-matching settings for your custom settings.*
- ❑ *You cannot delete the color-matching settings from the Custom Settings list.*

To delete advanced settings from the Custom Settings list, select them in the Custom Settings dialog box and click Delete.

Using your saved settings

To use your settings, select Custom as the Mode setting on the Main menu, then select your settings in the Custom Settings list, located below the Custom radio button. Settings such as Print Quality and Color are made automatically, according to the selections that you made when you saved the advanced settings.

If you change the Media Type or Ink settings while your customized advanced settings are selected in the Custom Settings list, the selection shown in the list returns to Custom Settings. The customized settings that were previously selected are not affected by the change. To return to your customized settings, simply reselect them in the list.

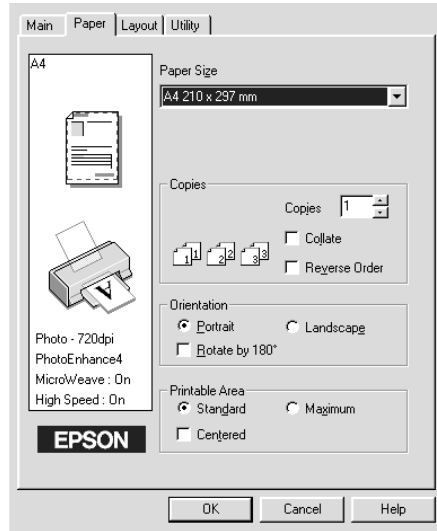
Modifying the printout style

You can modify your printout style using a variety of printer driver settings located on the Paper and Layout menus.

On the Paper menu, you can set the paper size, the number of copies, the orientation of your printout, and the printable area. On the Layout menu, you can automatically match the document size to the paper size, print two or four pages on a single sheet of paper, print poster-size images by enlarging one page to cover several sheets, or place watermarks on documents.

Making the Paper menu settings

Use the settings on the Paper menu to change the paper size, set the number of copies and other copy parameters, specify the paper orientation, and adjust the printable area.



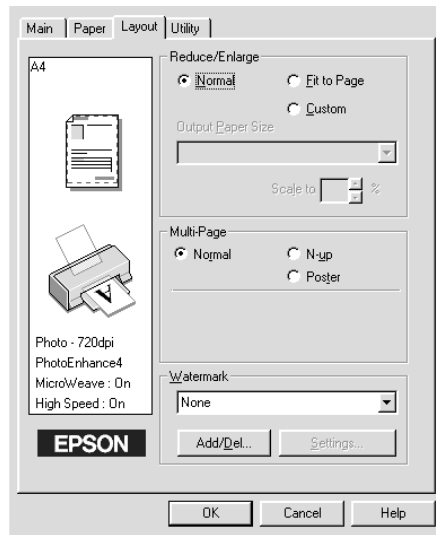
You can make the following settings on the Paper menu:

Paper Size	Select the paper size you want to use. You can also add a custom paper size.
Copies	Select the number of copies you wish to print. You can select Collate to print one set at a time when printing multiple copies or Reverse Order to determine the order in which you wish to print your document.
Orientation	Select Portrait (tall) or Landscape (wide) to change the orientation of your printout. If you need to print closer to the bottom of the page, select the Rotate by 180° check box.

<p>Printable Area</p>	<p>Select Centered if you want to center the printout. Select Maximum if you need to increase the printable area.</p> <p>Note: When Maximum is selected, the print quality may decline at the edges of the printout. Before printing large jobs using this setting, print a single sheet to confirm quality. When Maximum is selected, make sure the paper loaded in the sheet feeder is not curled.</p>
------------------------------	---

Fitting your document to the paper size

Use the Reduce/Enlarge options on the Layout menu to fit your document to the paper size you will print on.



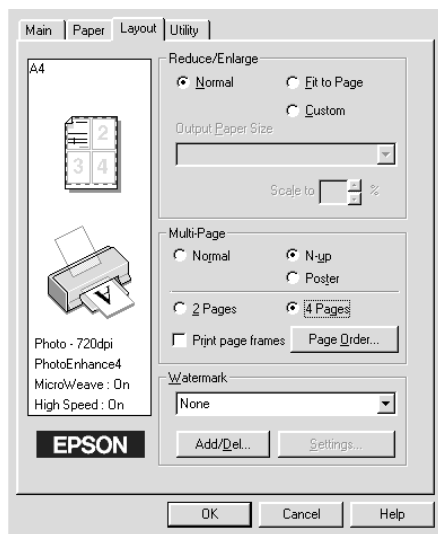
You can select from the following settings.

<p>Normal</p>	<p>Prints your document at its normal size.</p>
<p>Fit to Page</p>	<p>Proportionally enlarges or reduces the size of your document to make it fit the paper size you select in the Paper Size list on the Paper menu.</p>

Custom	Allows you to manually reduce or enlarge an image. Click the arrows next to the Scale to box to select a percentage between 10% and 400%.
---------------	---

Printing two or four pages on one sheet

Select N-up as the Multi-Page setting on the Layout menu to print two or four pages of your document on one sheet of paper.



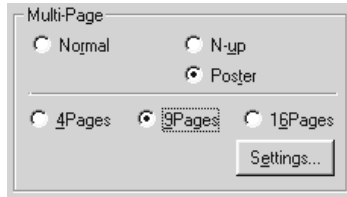
To print more than one page on the piece of paper, you should make the following settings:

2 Pages 4 Pages	Prints two or four pages of your document on a single piece of paper.
Page Order	Opens the Print Layout dialog box, where you can specify the order in which the pages will be printed on the sheet of paper. Some settings may be unavailable, depending upon your Orientation selection on the Paper menu.

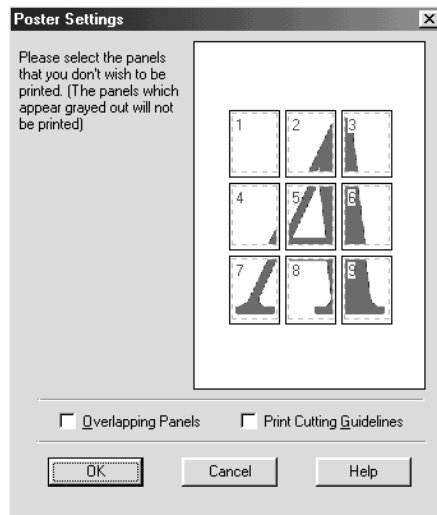
Print page frames	Prints a frame around each page that is printed on the sheet of paper.
--------------------------	--

Printing posters

A single document page can be enlarged to cover 4, 9, or 16 printed sheets of paper. Select Poster as the Multi-Page setting to print a poster-size image.



Click the Settings button to adjust the way your poster will print. The Poster Settings dialog box opens.



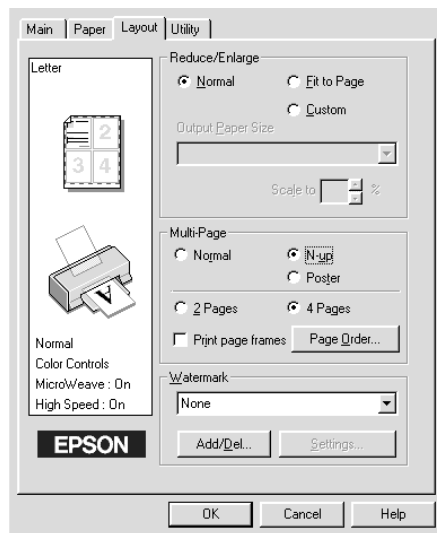
You can make the following settings.

Overlapping Panels	Slightly overlaps the images so that they can be aligned more precisely.
Print Cutting Guidelines	Prints border lines on the images to guide you when trimming the pages.

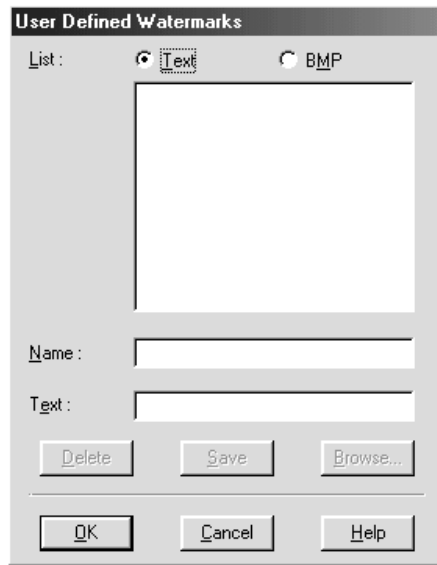
If you only want to print a few of the panels without printing the entire poster, click the panels that you don't wish to print, then click OK to close the Poster Settings dialog box.

Printing a watermark on your document

To print a watermark on your document, click anywhere in the Watermark list box on the Layout menu, and select from the list of predefined watermarks.



You can also add your own text-based or image-based watermarks to the Watermark list. To add a watermark, click the Add/Del button. The following dialog box appears.



Refer to the appropriate section below to finish creating a custom watermark.

Creating an image-based watermark

Follow the steps below to create an image-based watermark.

1. Select BMP.
2. Click the Browse button to specify the bitmap file you want to use, then click OK.
3. Type a name for your watermark in the Name box, then click Save. Click OK to return to the Layout menu.

Creating a text-based watermark

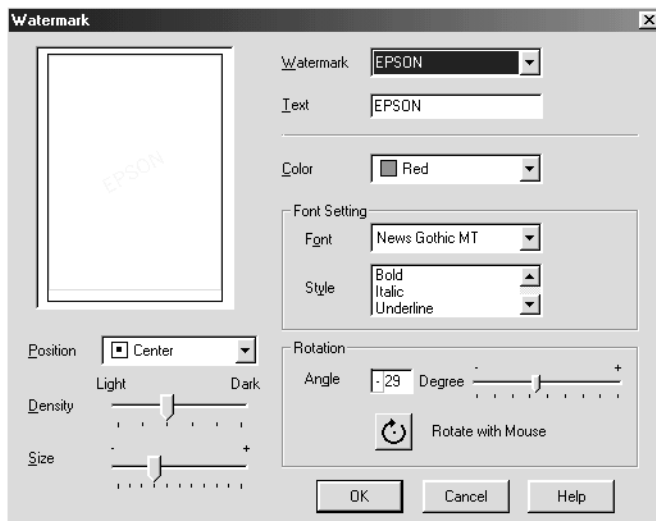
Follow the steps below to create a text-based watermark.

1. Select Text.
2. Type your text in the Text box. The text that you enter will also be assigned to the watermark as a watermark name.
3. If you want to change the watermark name, type a new name in the Name box, then click Save. Click OK to return to the Layout menu.

Making settings for your watermark

Follow the steps below to make settings for your watermark.

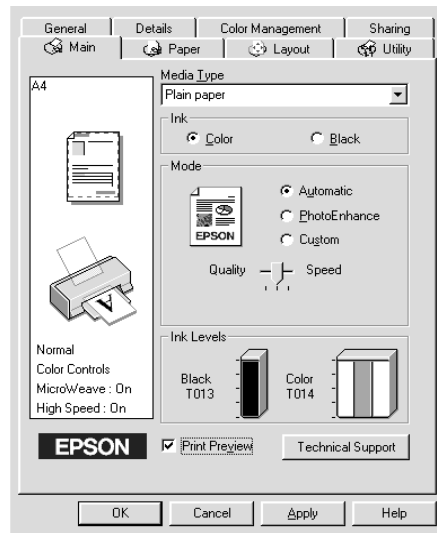
1. Select the desired watermark in the watermark list box on the Layout menu.
2. Click the Settings button. The following dialog box appears.



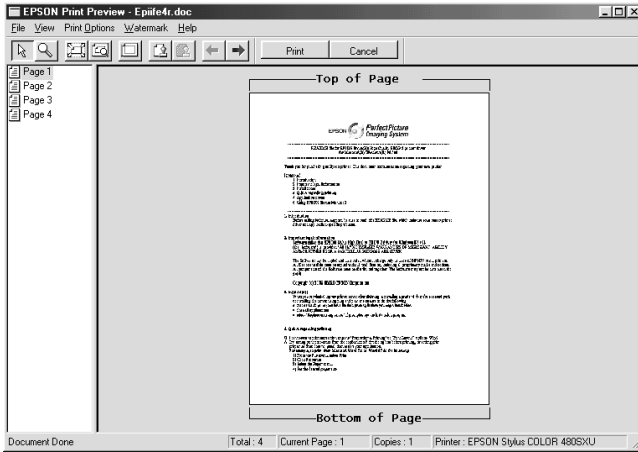
3. Make sure that the appropriate watermark is selected in the watermark list box, then make Color, Position, Density, Size, Font, Font Style and Angle settings. For details, please see the online help. Your settings are reflected in the display at the left side of the dialog box.
4. When you are finished making the settings, click OK.

Previewing your printout






Select the Print Preview check box on the Main menu when you wish to view a preview of your document before printing.







When you send a print job to the printer, the Print Preview window opens, allowing you to make changes before printing.




The Preview dialog box contains several icon buttons which you can use to perform the following functions.

	Selection	Click this button to select and move watermarks.
	Zoom	Click this button to enlarge or reduce the size of the previewed page.
	Fit-to-screen	Click this button to scale the previewed page so that it fits the size of the window. This is convenient when you want to see the entire page at one time.
	Maximum zoom	Click this button to display the previewed page at the maximum possible zoom ratio.
	Printable area on/off	Click this button to display a rectangle on the page being previewed. This rectangle is the printable area for the page. The printer cannot print anything which is outside of this rectangle. Click the button again to turn this feature off.

	Watermark	Click this button to open the Watermark Settings dialog box, where you can change any of the current watermark settings.
	Reset watermark settings	Click this button to return all watermark settings to what they were when the Print Preview window was first opened. If nothing has been changed, this feature is not available.
	Previous page	Click this button to display the page previous to the one currently being previewed. If there is no previous page, this feature is not available.
	Next page	Click this button to display the next page in the document. If there is no next page, this feature is not available.

You can also manipulate the previewed document in the following ways:

- Select and preview individual pages.
- Reduce or enlarge the size of the preview.
- Select and print any or all pages.
- Apply watermarks. The watermark that you select will be displayed in the previewed image. For detailed information on customizing watermarks, see “Printing a watermark on your document” on page 2-18.
- Specify which pages in the document you would like to print using the Add and Remove features. To add or remove a page, click the page icon in the list at the left side of the preview window. Then, add or remove it using the commands in the Print Options menu. The Print Options menu commands are as follows:

	Add page	Click this button to add the highlighted pages to the list of pages to be printed.
---	----------	--

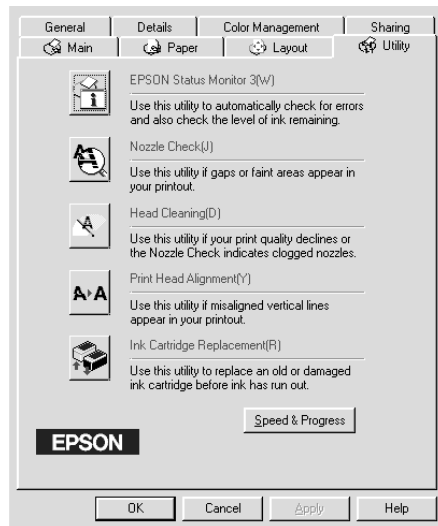
	Remove page	Click this button to remove the highlighted pages from the list of pages to be printed.
---	-------------	---

After you have previewed the document, click **Print** to print the document, or click **Cancel** to cancel printing.

Using the Printer Utilities

EPSON printer utilities allow you to check the current printer status and to perform some printer maintenance from your computer.

To use the utilities, click the **Utility** tab in the printer software window, then click the button for the utility you wish to use. For information on how to access the printer software, see “Accessing the printer software” on page 2-2.



Note:

- ❑ *The letter in parentheses after the utility name indicates the shortcut key for that utility. Press Alt and the letter on the keyboard to open that utility.*
- ❑ *Do not use the Nozzle Check, Head Cleaning, and Print Head Alignment utilities if your printer is connected to your computer through a network.*
- ❑ *Do not use the Nozzle Check, Head Cleaning, Print Head Alignment, or Ink Cartridge Replacement utilities while printing is in progress; otherwise, your printout may be marred.*

Status Monitor 3

Status Monitor 3 provides you with printer status information, such as the amount of ink remaining, and checks for printer errors.

This utility is only available when both of the following conditions are met:

- ❑ The printer is connected directly to the host computer via the USB port.
- ❑ Your system is configured to support bidirectional communication.

Nozzle Check

The Nozzle Check utility checks the print head nozzles for clogging. Check the nozzles if you notice print quality has declined and after cleaning to confirm that the print head nozzles have been cleared. If the nozzle check indicates the print head needs cleaning, you can access the Head Cleaning utility directly from the Nozzle Check utility. See “Checking the Print Head Nozzles” on page 6-1.

Head Cleaning

The Head Cleaning utility cleans the print head. You may need to clean the print head when you notice print quality has declined. Use the Nozzle Check utility first to confirm that the print head needs to be cleaned. You can access the Nozzle Check utility directly from the Head Cleaning utility. See “Cleaning the Print Head” on page 6-2.

Print Head Alignment

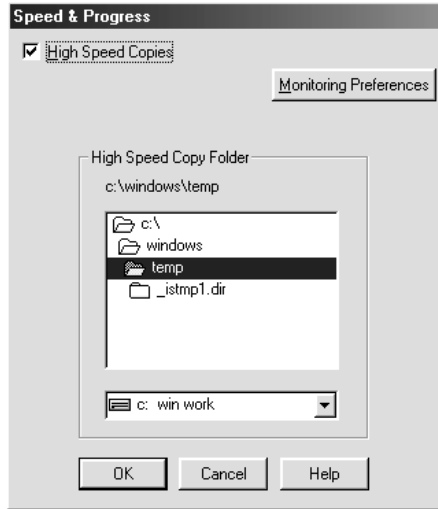
The Print Head Alignment utility aligns the print head. Use this utility if you notice a misalignment of vertical lines. Follow the on-screen instructions to use this utility.

Ink Cartridge Replacement

The Ink Cartridge Replacement utility guides you through replacing an old and damaged ink cartridge before ink has run out. This utility is only available when you access the printer software through the Printers folder. Otherwise, the utility will be unavailable. To access the printer software through the Printers folder, click Start, point to Settings, then click Printers. For Windows Me and 98 users, right click your printer’s icon and select Properties from the shortcut menu, then click the Utilities tab. For Windows 2000 users, select your printer and click Printing Preferences on the File menu, then click the Utilities tab.

Speed & Progress

You can make settings related to print speed and progress in this dialog box.



The available settings are as follows:

High Speed Copies

To print multiple copies of your document faster, select High Speed Copies. For more details, see “Making the High Speed Copies setting” on page 2-33.

Always Spool Raw Datatype (For Windows 2000 only)

Select this check box to have Windows NT-based clients spool documents using the RAW format instead of the EMF (metafile) format (Windows NT-based applications use the EMF format by default).

Try using this option if documents spooled in EMF format do not print correctly.

Spooling RAW datatype requires less resources than EMF, so some problems (“Insufficient Memory/Disk Space to Print”, “Slow print speed”, etc.) can be solved by selecting the “Always spool RAW datatype” check box.

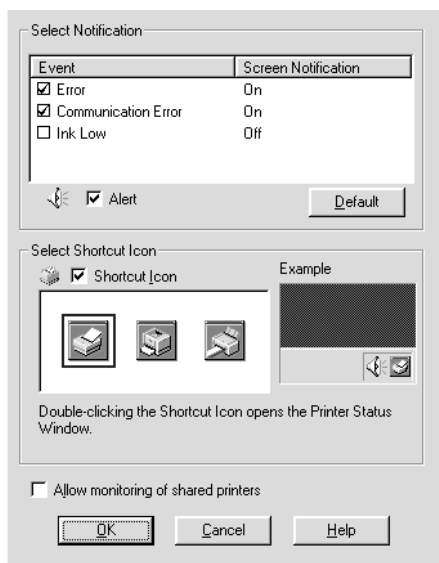
When spooling RAW datatype, print progress as displayed by the Progress Meter may differ from actual print progress.

Monitoring Preferences

Click this button to open the Monitoring Preferences dialog box where you can make settings for EPSON Status Monitor 3. The settings are described in detail in the next section.

Monitoring Preferences

When you click the Monitoring Preferences button, the following dialog box appears.



You can make the following settings:

Select Notification	Displays the current error item notification settings. In this area, you can designate whether to have general error messages, communication error messages, or ink status messages displayed during printing or copying. Select the appropriate check box to specify the error types for which you wish to receive notification. Also select the Alert check box if you wish to be notified of error messages with an audio alert.
Select Shortcut Icon	Select the Shortcut Icon check box to have a shortcut icon placed in your Windows taskbar. Click the shortcut icon in the taskbar to open EPSON Status Monitor 3. Right-click the icon to display a shortcut menu, where you can access some of the printer utilities. To select which icon will be displayed, click the icon your prefer from the choices given; your selection will be shown at the right.
Allow monitoring of shared printers	Select this check box to allow monitoring of a shared printer by other computers.

Note:

Click the Default button to revert all Select Notification settings to their defaults.

Getting Information Through Online Help

Your printer software has an extensive online help feature, which provides you with instructions on printing, making printer driver settings, and using printer utilities.

Accessing help from your application

Open the File menu and choose Print or Print Setup. Then click Printer, Setup, Options, or Properties. (Depending on your application, you may need to click a combination of these buttons.) Click Help at the bottom of the Main, Paper, Layout, and Utility menus for help related to the items on that menu.

You can get specific help related to any item on a menu by right-clicking the item, then clicking the What's This? command.

Accessing help from the Windows Start menu

Click the Start button, point to Programs and Epson (for Windows Me and 98) or EPSON Printers (for Windows 2000), then click EPSON Stylus COLOR 480SXU Help. The help contents window opens.

Increasing the Print Speed

Follow the instructions in this section to increase the printing speed of your printer.

General tips

Just as printing at a high resolution requires more processing time than printing at a low resolution, printing in color takes longer than printing in black-and-white because the volume of data in a color document is much greater. For this reason, it is important to be selective in your use of color if you also require a fast print speed.

However, even if your document requires the highest resolution and extensive use of color – for example, when you are printing a camera-ready composite that includes color photographs – it may still be possible to optimize the print speed by adjusting other printing conditions. Keep in mind that changing some conditions to increase the print speed may also lower print quality.

The following table shows the factors that inversely affect print speed and print quality (increasing one will decrease the other).

Print quality Print speed		Lower Faster	Higher Slower	Printer driver menu
Printer driver settings	Print Quality	Econom y, Normal	Photo	Advanc ed dialog box
	High Speed	On	Off	
	Finest Detail	Off	On	
Data characteristi cs	Image size	Small	Large	–
	Resolution	Low	High	

The table below shows the factors related to print speed only.

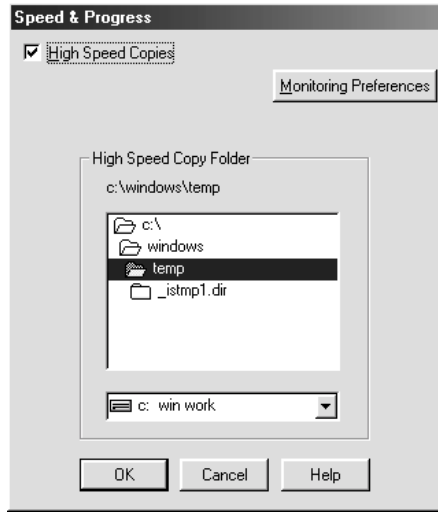
Print speed		Faster	Slower	Printer driver menu
Printer driver settings	Ink	Black	Color	Advanced dialog box, Main menu
	Flip Horizontal*	Off	On	Advanced dialog box
	Collate*	Off	On	Paper menu
	Reverse Order*	Off	On	
Data characteristics	Variety of colors	Grayscale**	Full color	–
Hardware resources	System speed	Faster	Slower	–
	HDD free space	Large	Small	
	Memory free space	Large	Small	
Software status	Running applications	One	Many	–
	Virtual memory	Not in use	In use	

* Varies depending on the printer driver and application that you are using.

** Grayscale means using black ink only to print varying shades of gray, from pure black to pure white.

Making the High Speed Copies setting

You can increase the print speed by selecting the High Speed Copies check box in the Speed & Progress dialog box. To make this setting, click the Speed & Progress button on your printer software's Utility menu. The following dialog box appears.

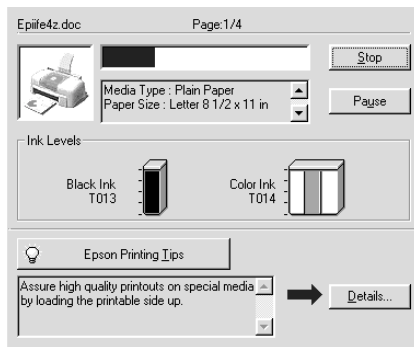


Select the High Speed Copies check box to turn on high-speed printing for multiple copies. This speeds up printing by using your hard disk space as a cache when printing multiple copies of your document.

Checking Printer Status and Managing Print Jobs for Windows

Using the Progress Meter

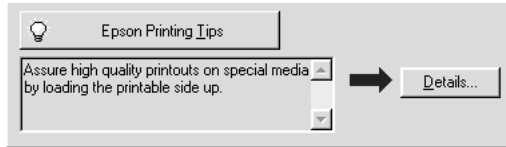
When you send a print job to the printer, the Progress Meter opens, as shown in the illustration below.



The Progress Meter indicates the progress of the current print job and provides printer status information when bidirectional communication between the printer and computer is established. This meter also displays helpful tips for better printing and error messages, as explained below.

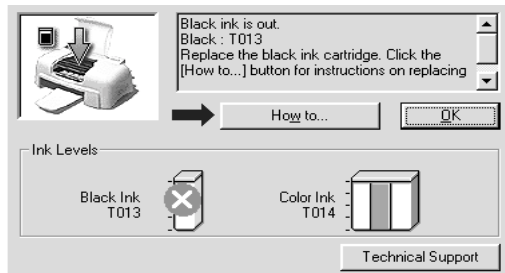
Epson Printing Tips

Tips for getting the most out of your EPSON printer driver appear in the text box at the bottom of the Progress Meter window. A new tip appears every 30 seconds. For more details on a tip which is currently displayed, click the Details button.



Error messages

If a problem occurs during printing, an error message appears in the text box at the top of the Progress Meter window. For more detailed information, click Technical Support to access the Problem Solver HTML manual. When the ink runs low or out, a How to button appears below the text box. Click How to and EPSON Status Monitor 3 will lead you step-by-step through the cartridge replacement procedure.



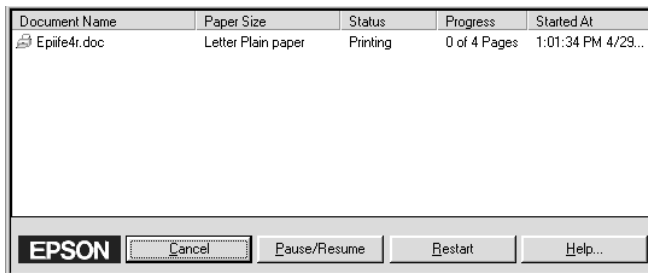
Using EPSON Spool Manager

EPSON Spool Manager is similar to Windows Print Manager. If it receives two or more print jobs at one time, it holds them in the order that they were received (with printers on a network this may be called a print queue). When a print job reaches the top of the line, the EPSON Spool Manager sends the job to the printer. From the Spool Manager, you can view print status information about the print jobs which have been sent to your printer. You can also cancel, pause and resume, or restart selected print jobs.

Note:

EPSON Spool Manager is not available for Windows 2000.

After you send a print job, an EPSON Stylus COLOR 480SXU button appears on the taskbar. Click this button to open the EPSON Spool Manager.



Using EPSON Status Monitor 3

EPSON Status Monitor 3 displays detailed information on the printer status.

Note:

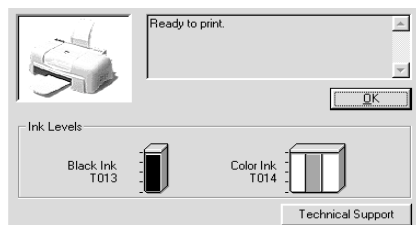
Before using EPSON Status Monitor 3, be sure to read its README file. To open this file, click Start, point to Programs and then Epson or EPSON Printers, then click EPSON Stylus COLOR 480SXU Readme.

Accessing EPSON Status Monitor 3

There are two ways to access EPSON Status Monitor 3.

- ❑ Double-click the printer-shaped shortcut icon on the Windows taskbar. See “Monitoring Preferences” on page 2-28 for details.
- ❑ Open the printer driver, click the Utility tab, then click EPSON Status Monitor 3.

When you access EPSON Status Monitor 3, the following window appears.



Viewing information in EPSON Status Monitor 3

EPSON Status Monitor 3 provides the following information.

- ❑ **Current Status:**
EPSON Status Monitor 3 provides you with detailed printer status information, a graphic display, and status messages. If the ink runs low or out, the HOW to button appears in the EPSON Status Monitor 3 window. Clicking HOW to displays ink cartridge replacement instructions and moves the print head to the ink cartridge replacement position.

- ❑ **Ink Levels:**
EPSON Status Monitor 3 provides a graphic display of the amount of ink remaining. For the color ink cartridge, the chamber with the least amount of ink remaining determines the level that is displayed for all the colors in the cartridge.

- ❑ **Technical Support:**
You can access the Problem Solver HTML manual from EPSON Status Monitor 3. If you encounter a problem, click Technical Support in the EPSON Status Monitor 3 window.

Setting Up Your Printer on a Network

For Windows Me and 98 Users

This section tells you how to set up your printer so that other computers on the network can use it. When using EPSON Stylus COLOR 480SXU as a shared printer, only the computer which is directly connected to the printer can be used to perform such operations as replacing ink cartridges and removing jammed paper. Computers that are connected to the printer through a network are limited to certain operations.

First, you need to set up the printer as a shared printer on the computer to which the printer is connected. Then, you must specify the network path to the printer from each computer that will use it and install the printer software on those computers.

Note:

- ❑ *This section describes how to use your printer as a shared printer on a network. To connect your printer directly to a network without setting it up as a shared printer, consult your network administrator.*

- ❑ *The screens shown in this section are from Windows 98.*

Setting up your printer as a shared printer

To share a printer with other computers on a network, follow the steps below to configure to computer to which the printer is connected.

1. Click Start, point to Settings, then click Control Panel.
2. Double-click the Network icon.

3. Click the File and Print Sharing button.
4. Select the I want to be able to allow others to print to my printer(s) check box and click OK.

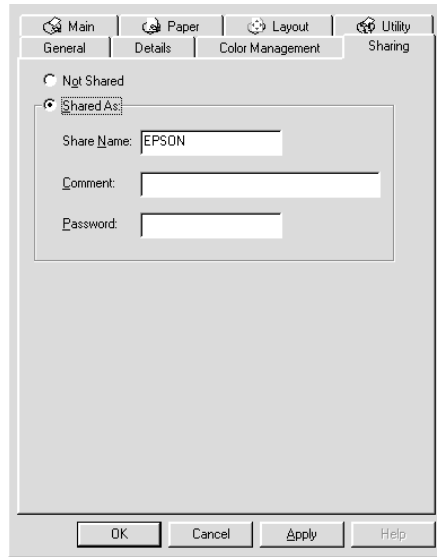


5. In the Network dialog box, click OK.
6. In the Control Panel, double-click the Printers icon.

Note:

- ❑ *If a dialog box requesting the insertion of the Windows Me or 98 CD-ROM appears, insert the CD in the CD-ROM drive and follow the on-screen instructions.*
 - ❑ *If a dialog box requesting that you restart your computer appears, do so. Then, open the Printers folder and continue from step 7.*
7. Select the icon for your printer in the Printers folder, then click Sharing on the File menu.

8. Select **Shared As**, then type the printer information as required and click **OK**.



Accessing the printer through a network

To access your printer from other computers on a network, follow the steps below for each computer that will access the printer.

Note:

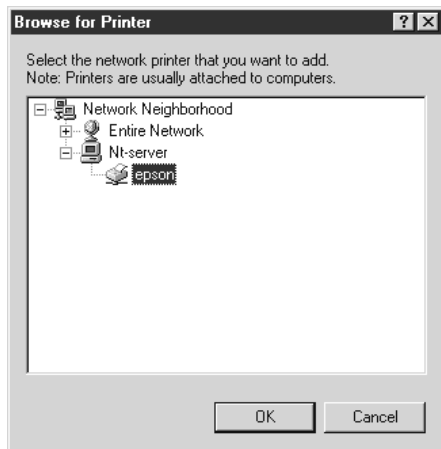
Your printer must be set up as a shared resource on the computer to which it is directly connected before you can access it from another computer. For instructions, see "Setting up your printer as a shared printer" on page 4-1.

1. Click **Start**, point to **Settings**, and click **Printers**.
2. Double-click the **Add Printer** icon. The **Add Printer Wizard** screen opens.
3. Click **Next**.

4. Select Network printer, then click Next.



5. Click Browse.
6. Double-click the icon of the computer that is directly connected to the printer. Then, click the icon for the appropriate printer.



7. Click OK and follow the on-screen instructions.

For Windows 2000 Users

This section tells you how to set up your printer so that other computers on the network can use it. When using EPSON Stylus COLOR 480SXU as a shared printer, only the computer which is directly connected to the printer can be used to perform such operations as replacing ink cartridges and removing jammed paper. Computers that are connected to the printer through a network are limited to certain operations.

Note:

This section is written for small network users only. If you are on a large network and would like to share your printer, consult your network administrator.

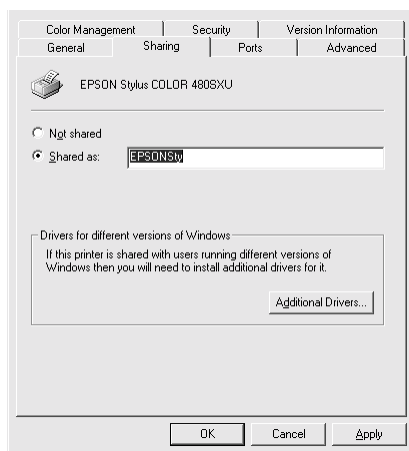
First, you need to set up the printer as a shared printer on the computer to which the printer is connected. Then, you must specify the network path to the printer from each computer that will use it and install the printer software on those computers.

Setting up your printer as a shared printer

To share a printer with other computers on a network, follow the steps below to configure the computer to which the printer is connected.

1. Click Start, point to Settings, and click Printers.
2. Select the icon for your printer, then click Sharing on the File menu.

3. Click Shared and type the Share Name.



4. Click OK.

Note:

Do not select a driver from the Alternate Drivers list.

Accessing the printer through a network

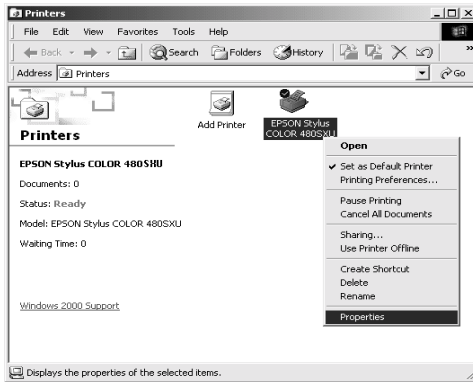
To access your printer from other computers on the network, follow the steps in this section for each computer that will access the printer.

Note:

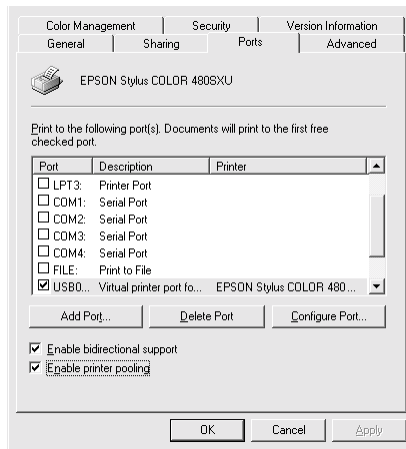
Your printer must be set up as a shared resource on the computer to which it is directly connected before you can access it from another computer. For instructions, see "Setting up your printer as a shared printer" on page 4-5.

1. Install the printer driver from the software CD-ROM.
2. Click Start, point to Settings, and then click Control Panel.

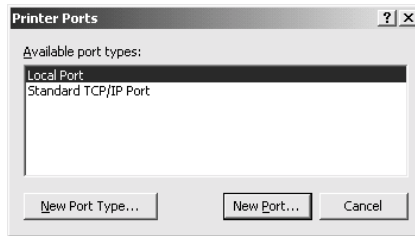
3. Double-click the Printers icon.
4. Right-click the icon for your printer, then click Properties on the menu that appears. The printer driver opens.



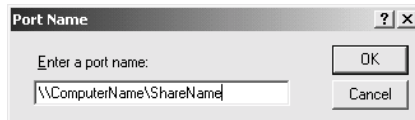
5. Click the Ports tab, then click Add Port.



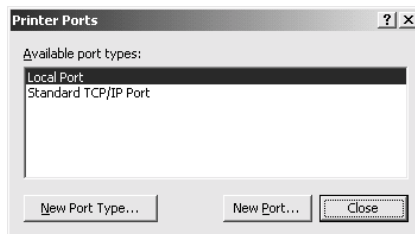
6. In the Printer Ports dialog box, select Local Port, then click New Port.



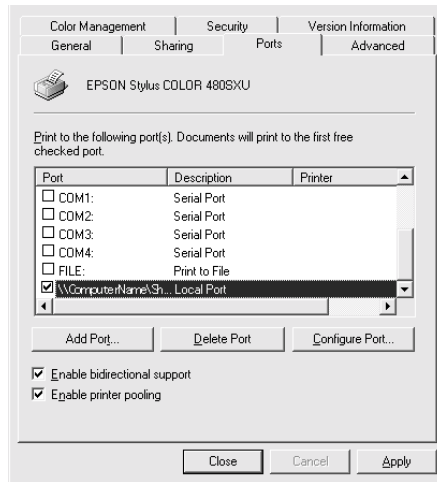
7. In the Port Name dialog box, enter the path information for your printer using the format below:
\\name of computer that is connected to the printer\nname of the shared printer.



8. Click OK to return to the Printer Ports dialog box.
9. Click Close to return to the Ports menu.



10. On the Ports menu, make sure that the new port is included in the list and that the corresponding check box is selected. Click OK to close the printer driver.

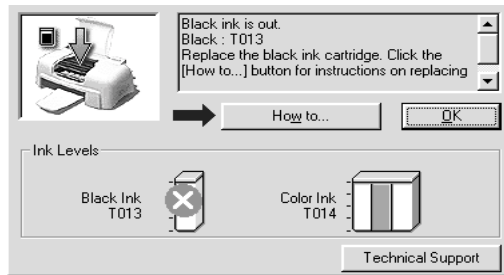


Replacing Ink Cartridges

Replacing an Empty Ink Cartridge

The Status Monitor 3 utility lets you monitor the remaining ink levels from your computer and view on-screen instructions for replacing an empty or nearly empty ink cartridge.

When an ink cartridge is empty or nearly empty, click the How to button in the Status Monitor window to move the print head to the ink cartridge replacement position. Follow the on-screen instructions to replace the cartridge.



For details, see “Using EPSON Status Monitor 3” on page 3-3.

Note:

If you need to replace an ink cartridge before it is empty, see “Replacing an Old or Damaged Ink Cartridge” on page 5-3.

Please read the following information pertaining to ink cartridges and the print head before replacing the ink cartridges.

**Warning:**

- ❑ *Keep ink cartridges out of reach of children. Do not allow children to drink from or otherwise handle the cartridges.*
- ❑ *If ink gets on your hands, wash them thoroughly with soap and water. If ink gets into your eyes, flush them immediately with water. If discomfort or vision problems remain after a thorough flushing, see a doctor immediately.*

**Caution:**

- ❑ *EPSON recommends the use of genuine EPSON ink cartridges. Other products not manufactured by EPSON may cause damage to your printer not covered by EPSON's warranties.*
- ❑ *Do not remove the used cartridge from the printer until you have obtained a replacement. Otherwise, the ink remaining in the print head nozzles may dry out.*
- ❑ *You must remove the yellow tape seal from a cartridge before installing it; otherwise, the cartridge will become unusable.*
- ❑ *Do not remove the blue portion of the tape seal from the top of the cartridge; otherwise, the print head may become clogged and unable to print.*
- ❑ *Do not remove the tape seals from the bottom of the cartridge; otherwise, ink will leak.*
- ❑ *Once you install the ink cartridges, do not open the ink cartridge clamps again until you replace the cartridges; otherwise, the cartridges may become unusable.*
- ❑ *Do not move the print head by hand; otherwise, you may damage the printer.*
- ❑ *When you remove an ink cartridge, be sure to install a new one; otherwise, you may damage the print head.*

Note:

- ❑ *You cannot continue printing with one ink cartridge empty, even if the other cartridge still contains ink. Before printing, replace the empty cartridge.*

- ❑ *In addition to the ink used during document printing, ink is consumed during print head cleaning, ink cartridge replacement, and the self-cleaning cycle which is performed when the printer is turned on.*

Replacing an Old or Damaged Ink Cartridge

In some circumstances, you may need to replace an ink cartridge before it is empty. For example, if the quality of your printouts remains poor even after repeatedly cleaning and aligning the print head, one or both of the ink cartridges may be old or damaged and should be replaced.

To replace an ink cartridge before the Status Monitor 3 notifies you that the cartridge is empty, use the Ink Cartridge Replacement utility that is included with your printer software.

Note:

If an on-screen message instructs you to replace an ink cartridge, replace it as described in “Replacing an Empty Ink Cartridge” on page 5-1.

Follow the directions in the appropriate section below to replace an old or damaged ink cartridge using the Ink Cartridge Replacement utility.



Caution:

- ❑ *Once you remove an installed ink cartridge from the printer, it becomes unusable and cannot be reinstalled, even if ink remains.*
- ❑ *Do not remove the used cartridge from the printer until you are ready to replace it with a new one.*
- ❑ *You must remove the yellow tape seal from the cartridge before installing it; otherwise, the cartridge will become unusable.*
- ❑ *Do not remove the blue portion of the tape seal from the top of the cartridge; otherwise, the print head may become clogged and will be unable to print.*
- ❑ *Do not remove the tape seals from the bottom of the cartridge; otherwise, ink will leak.*
- ❑ *Once you install the cartridges, do not open the ink cartridge clamps again until you replace the cartridges; otherwise, the cartridges may become unusable.*
- ❑ *When you remove an ink cartridge, be sure to install a new one; otherwise, you may damage the print head.*

For Windows users

Follow the steps below to use the Ink Cartridge Replacement utility.

Note:

You can only access the Ink Cartridge Replacement utility from the Windows Start menu.

1. Access the printer software. For instructions on accessing the printer software, see “Accessing the printer software” on page 2-2.

2. Click the Utility tab, then click the Ink Cartridge Replacement button.
3. Follow the on-screen instructions.

Checking the Print Head Nozzles

If you find that the printed image is unexpectedly faint or dots in the printed image are missing, you may be able to identify the problem by checking the print head nozzles.

You can check the print head nozzles from your computer using the Nozzle Check utility, accessed through the printer software. Windows users can also access the Nozzle Check utility using a shortcut icon.

Using the Nozzle Check utility

Refer to the section below to use the Nozzle Check utility.

Note:

- ❑ *Before using the utility, make sure that A4 or Letter size paper is loaded in the sheet feeder.*
- ❑ *Do not use the Nozzle Check utility while printing is in progress; otherwise, your printout may be marred.*

There are two ways to access the Nozzle Check utility:

- ❑ Right-click the printer-shaped icon on the Windows taskbar and click Nozzle Check on the shortcut menu that appears.
- ❑ Access the printer software and click the Utility tab, then click the Nozzle Check button. For details on accessing the printer software, see “Accessing the printer software” on page 2-2.

After opening the utility, follow the on-screen instructions.

Cleaning the Print Head

If you find that the printed image is unexpectedly faint or dots in the printed image are missing, you may be able to solve these problems by cleaning the print head, which ensures that the nozzles are delivering ink properly.

You can clean the print head from your computer using the Head Cleaning utility, accessed through the printer software. Windows users can also access the Head Cleaning utility using a shortcut icon.

Note:

- ❑ *Print head cleaning uses both color and black ink. To avoid wasting ink, clean the print head only if print quality declines; for example, if the printout is blurry or colors are incorrect or missing.*
- ❑ *Use the Nozzle Check utility first to confirm that the print head needs to be cleaned. This saves ink.*
- ❑ *Do not start the Head Cleaning or Nozzle Check utility while printing is in progress; otherwise, your printout may be marred.*

Using the Head Cleaning utility

Refer to the section below to use the Head Cleaning utility.

Note:

If the Status Monitor 3 or Progress Meter displays a message indicating that the ink cartridges need replacing, you cannot clean the print head. Replace the appropriate ink cartridge first.

There are two ways to access the Head Cleaning utility:

- ❑ Right-click the printer-shaped icon on the Windows taskbar and click Head Cleaning on the shortcut menu that appears.

- ❑ Access the printer software and click the Utility tab, then click the Head Cleaning button. For details on accessing the printer software, see “Accessing the printer software” on page 2-2.

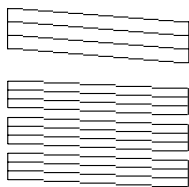
After opening the utility, follow the on-screen instructions. Click Print nozzle check pattern in the Head Cleaning dialog box to confirm that the head is clean and to reset the cleaning cycle.

Note:

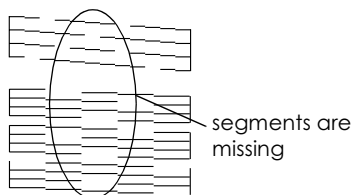
The cleaning cycle takes about thirty seconds to complete.

Below are nozzle check patterns:

Good sample



Print head needs to be cleaned



The above sample is in black and white, but the actual check pattern prints in color.

In the check pattern, if you find that any segments are missing from the test lines, you may need to repeat the head cleaning and print the nozzle check pattern again.

If print quality has not improved after repeating this procedure four or five times, unplug the power cord of your printer and leave it alone overnight. Then do the head cleaning again.

If the print quality still has not improved, one or both of your ink cartridges may be old or damaged and may need to be replaced. To replace an ink cartridge, see “Replacing an Old or Damaged Ink Cartridge” on page 5-3.

If print quality remains a problem after replacing the ink cartridges, contact your dealer.

Note:

To maintain print quality, we recommend turning on the printer for at least one minute every month.

Aligning the Print Head

If you notice a misalignment of vertical lines, you may be able to solve this problem from your computer using the Print Head Alignment utility in your printer software. Windows users can also access the Print Head Alignment utility using a shortcut icon. Refer to the section below.

Note:

Do not start the Print Head Alignment utility while printing is in progress; otherwise, your printout may be marred.

There are two ways to access the Print Head Alignment utility:

- ❑ Right-click the printer-shaped icon on the Windows taskbar and click Print Head Alignment on the shortcut menu that appears.
- ❑ Access the printer software and click the Utility tab, then click the Print Head Alignment button. For details on accessing the printer software, see “Accessing the printer software” on page 2-2.

After opening the utility, follow the on-screen instructions.

Cleaning the Printer

To keep your printer operating at its best, clean it thoroughly several times a year as follows.

1. Unplug the printer's power cord.
2. Remove any paper from the sheet feeder.
3. Use a soft brush to carefully clean away all dust and dirt from the sheet feeder.
4. If the outer case or the inside of the sheet feeder is dirty, clean it with a soft, clean cloth dampened with mild detergent. Keep the printer cover closed to prevent water getting inside.
5. If the inside of the printer accidentally gets soiled with ink, wipe it off with a damp cloth.



Warning:

Be careful not to touch the gears inside of the printer.



Caution:

- Be careful not to wipe the carriage shaft.*
- Never use alcohols or thinners to clean the printer; these chemicals can damage the components as well as the case.*
- Be careful not to get water on the printer mechanism or electronic components.*
- Do not use a hard or abrasive brush.*
- Do not spray the inside of the printer with lubricants; unsuitable oils can damage the mechanism. Contact your dealer or a qualified service person if lubrication is needed.*

Transporting the Printer

If you need to transport your printer, carefully prepare and repack it as described below using the original box (or a similar box that the printer fits snugly into) and packing materials. Follow the steps below.

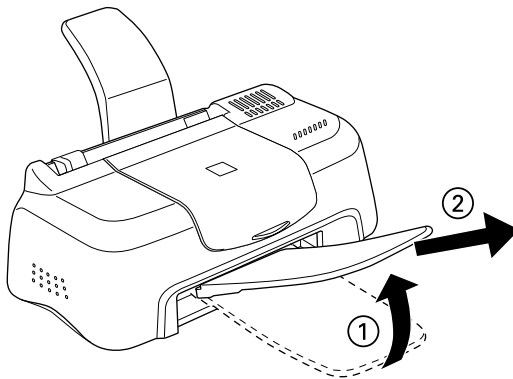
1. Open the printer cover and make sure that the print head is in the home (far right) position. If not, plug in the printer and wait until the print head returns to the home position. Then close the printer cover and unplug the printer.



Caution:

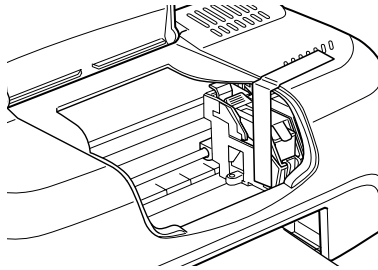
Leave the ink cartridges installed when you transport the printer. Removing the cartridges during transport can damage the printer.

2. To remove the output tray, lift it and pull it out.



3. Disconnect the interface cable from the printer.
4. Remove the paper from the sheet feeder and remove the paper support.

5. Open the printer cover again. Secure the ink cartridge holder to the printer with tape as shown below, then close the printer cover.



6. Attach the protective materials to both sides of the printer.
7. Repack the printer and power cord in the original box.
8. Keep the printer level during transport.

Correcting USB Problems

If you are having difficulty using your printer with a USB connection, read the information in this section.

Operating system

Your computer must be a Windows Me, or a Windows 98 pre-installed model, a Windows 2000 pre-installed model, or a Windows 98 pre-installed model that has been upgraded to Windows 2000. You may not be able to install or run the USB Printer Driver on a computer which is not equipped with a USB port or which has been upgraded from Windows 95 to Windows 98 or 2000. For Windows Me users, your computer must be a Windows Me pre-installed model or upgraded from Windows 98 pre-installed model.

For details about your computer, contact your dealer.

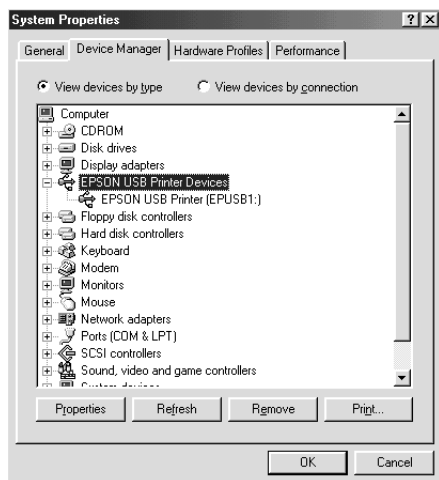
The Device Manager menu (for Windows Me and 98)

If you canceled the plug-and-play driver installation before the procedure was completed, either the USB printer device driver or the printer driver may be incorrectly installed.

Follow the steps below to check the installation and reinstall the drivers.

1. Plug in the power cord and then plug the USB cable into the printer and the computer.
2. Right-click the My Computer icon on your desktop, then click Properties.
3. Click the Device Manager tab.

If your drivers are correctly installed, EPSON USB Printer Devices should appear on the Device Manager menu.



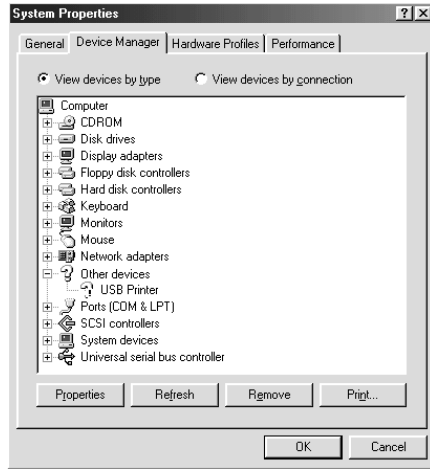
If EPSON USB Printer Devices does not appear on the Device Manager menu, click the plus (+) sign beside Other Devices to view the installed devices.



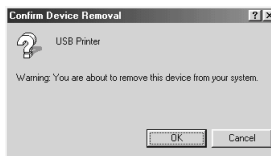
If USB Printer appears under Other Devices, the USB printer device driver is not installed correctly. If EPSON Stylus COLOR 480SXU appears, the printer driver is not installed correctly.

If neither USB Printer nor EPSON Stylus COLOR 480SXU appears under Other Devices, click Refresh or unplug the USB cable from the printer, then plug it into the printer again.

4. Under Other Devices, click USB Printer or EPSON Stylus COLOR 480SXU, then click Remove and then OK.



5. When the following dialog box appears, click OK. Then, click OK to close the System Properties dialog box.



6. Turn off the PC and unplug both the printer and the PC. Then, reinstall the drivers from the beginning, following the instructions in the *Setup Guide*.

Printer does not work correctly with the USB cable

If your printer does not work correctly with the USB cable, try one or more of these solutions:

- ❑ Use the USB cable (C83623*) recommended in “System Requirements” on page A-10.
- ❑ If you use a USB hub, connect the printer to the first tier of the hub, or connect the printer directly to the computer’s USB port.
- ❑ For Windows 98 users, try reinstalling the USB printer device driver and the printer software. First, uninstall EPSON Printer Software using the Add/Remove Programs utility in the Control Panel, then uninstall EPSON USB Printer Devices. Next, reinstall the software as described in *Setup Guide*. If EPSON USB Printer Devices is not registered in the Add/Remove Programs list, access the CD-ROM and double-click `epusbun.exe` in the Win 9x folder. Then follow the on-screen instructions.

Diagnosing the Problem

Troubleshooting printer problems is best handled in two easy steps: first diagnose the problem, then apply likely solutions until the problem is fixed. The information that you need to diagnose the most common problems is provided by the Status Monitor utility.

Use the information presented in this chapter to pinpoint the source of your problem, then apply the recommended solutions until the problem is solved.

The Status Monitor 3 utility provides status messages and a graphic display showing the current state of the printer.

If a problem occurs while printing, an error message appears in the Progress Meter window. Click the HOW TO button to have the Status Monitor provide instructions for dealing with the problem.

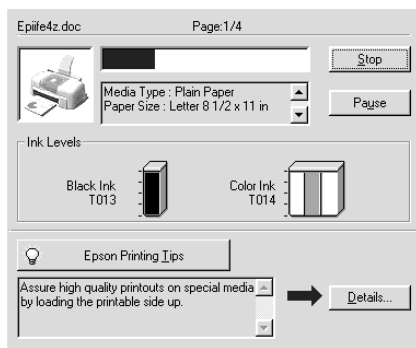
When the ink is out, click the HOW TO button in the Status Monitor 3 or Progress Meter window to have the Status Monitor lead you step-by-step through the cartridge replacement procedure.

Canceling Printing

If the printouts are not what you expected and contain incorrect or garbled characters or images, you may need to cancel printing. To cancel printing, follow the instructions in the section below.

Using the Progress Meter

When you send a print job to the printer, the Progress Meter appears on your computer screen.



Click the Stop button to cancel printing.

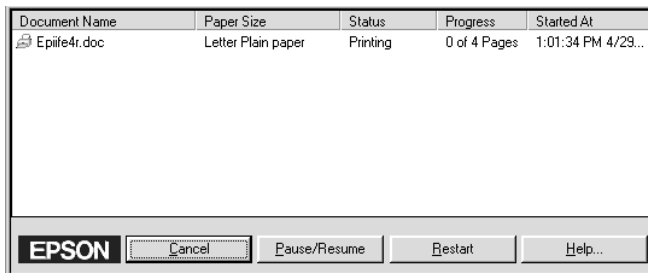
Using EPSON Spool Manager

EPSON Spool Manager is similar to Windows Print Manager. If it receives two or more print jobs at one time, it holds them in the order that they were received (with printers on a network this may be called a print queue). When a print job reaches the top of the line, the EPSON Spool Manager sends the job to the printer. From the Spool Manager, you can cancel print jobs that have been sent to the printer. You can also pause and resume or restart selected print jobs.

Note:

EPSON Spool Manager is not available for Windows 2000.

After you send a print job, an EPSON Stylus COLOR 480SXU button appears on the taskbar. Click this button to open the EPSON Spool Manager. To cancel a print job, select the appropriate job and click Cancel.



Print Quality Could Be Better

If you are having print quality problems, try the solutions offered in this section.

Horizontal banding

Try one or more of these solutions:

- ❑ Make sure the printable side of the paper is face up in the sheet feeder.
- ❑ Run the Head Cleaning utility to clear any clogged ink nozzles.
- ❑ Select Automatic as the Mode setting on your printer driver's Main Menu.
- ❑ Make sure that there are no error messages displayed. If an error message indicates that the ink cartridges need replacing, click the HOW TO button and follow the on-screen instructions.
- ❑ Make sure that Maximum is not selected as the Printable Area setting in your printer driver. When this setting is selected, banding may occur in the expanded area.
- ❑ Make sure that the Media Type selected in the printer driver is appropriate for the type of media loaded in the printer.

Vertical misalignment or banding

Try one or more of these solutions:

- ❑ Make sure the printable side of the paper is face up in the sheet feeder.
- ❑ Run the Print Head Alignment utility.
- ❑ Clear the High Speed check box in the Advanced dialog box of your printer driver. See "Making advanced settings" on page 2-10 for instructions.
- ❑ Run the Head Cleaning utility to clear any clogged ink nozzles.
- ❑ Make sure the Media Type setting selected in the printer driver is appropriate for the type of media loaded in the printer.

Color gaps

Try one or more of these solutions:

- Make sure your paper is not damaged, dirty, or too old. Also, make sure the printable side of the paper is face up in the sheet feeder.
- Run the Head Cleaning utility to clear any clogged ink nozzles.
- Make sure there are no error messages displayed. If an error message indicates that the ink cartridges need replacing, click the HOW TO button and follow the on-screen instructions.
- Adjust the color settings in your application or your printer driver's Advanced dialog box. For instructions, see "Making advanced settings" on page 2-10.
- Select Automatic as the Mode setting on your printer driver's Main Menu.
- Make sure the Media Type setting selected in the printer driver is appropriate for the type of media loaded in the printer.

Incorrect or missing colors

Try one or more of these solutions:

- Change the Ink setting in your printer driver to Color. For instructions, see "Using the Automatic mode" on page 2-7.
- Adjust the color settings in your application or your printer driver's Advanced dialog box. For instructions, see "Making advanced settings" on page 2-10.

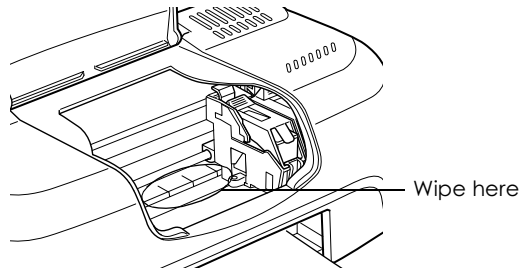
- ❑ Run the Head Cleaning utility. If colors are still incorrect or missing, replace the color ink cartridge. If the problem persists, replace the black ink cartridge. See “Replacing an Empty Ink Cartridge” on page 5-1.

Blurry or smeared printout

Try one or more of these solutions:

- ❑ Make sure your paper is dry and the printable side is facing up. Also, make sure you’re using an acceptable paper type. See “Paper” on page A-1 for specifications.
- ❑ Select Automatic as the Mode setting on your printer driver’s Main Menu.
- ❑ If the paper is curled toward the printable side, flatten it or curl it slightly toward the opposite side.
- ❑ Remove each sheet from the output tray as it is printed, especially if you are using transparencies.
- ❑ If you are printing on glossy media or transparencies, place a support sheet (or a sheet of plain paper) beneath the stack. Or, load one sheet at a time.
- ❑ Run the Head Cleaning utility.
- ❑ Run the Print Head Alignment utility.

- ❑ Ink may have leaked inside the printer; wipe the inside of the printer with a soft, clean cloth.



Warning:

Be careful not to touch the gears inside the printer.



Caution:

Be careful not to wipe the carriage shaft.

Printouts Are Not What You Expected

If one of the following problems has occurred, try the solutions listed for the problem.

- ❑ Incorrect or garbled characters
- ❑ Incorrect margins
- ❑ Inverted image
- ❑ Blank pages print
- ❑ Printout has smears on the bottom edge
- ❑ Printing is too slow

Incorrect or garbled characters

Try one or more of these solutions:

- Select your printer as the default printer.
- Clear any stalled print jobs from the Spool Manager. For instructions, see “Using EPSON Spool Manager” on page 7-6.
- Unplug the printer and turn off the computer. Make sure the printer’s interface cable is securely plugged in.

Incorrect margins

Try one or more of these solutions:

- Check the margin settings in your application. Make sure the margins are within the printable area of the page. See “Paper” on page A-1 for specifications.
- Check the settings on the Paper menu. Make sure the settings are appropriate for the paper size that you are using.

Inverted image

Clear the Flip Horizontal check box in the printer driver, or turn off the “Mirror” setting in your application. For instructions, see the online help for the printer driver or for your application.

Blank pages print

Try one or more of these solutions:

- Select your printer as the default printer.
- Check the settings on the Paper menu. Make sure they are appropriate for the paper size that you are using.

- ❑ Run the Head Cleaning utility to clear any clogged nozzles.

Printout has smears on the bottom edge

Try one or more of these solutions:

- ❑ If the paper is curled toward the printable side, flatten it or curl it slightly toward the opposite side.
- ❑ Clear the High Speed check box in your printer driver's Advanced dialog box. The Advanced dialog box is accessible through the Main menu when CUSTOM is selected as the Mode setting. To turn this option off, you may also need to change the Print Quality setting.

Printing is too slow

Try one or more of these solutions:

- ❑ Make sure the Media Type setting in your printer driver is correct. For instructions, see "Making the Media Type setting" on page 2-4.
- ❑ Select Automatic as the Mode setting on your printer driver's Main menu (Windows) or in the Print dialog box (Macintosh) and then move the slider to Speed. For instructions, see "Using the Automatic mode" on page 2-7.
- ❑ Close any applications you are not using at the moment.

Printer Doesn't Print

Try one or more of these solutions:

- ❑ Turn off computer and unplug the printer. Make sure that the printer's interface cable is securely plugged in.
- ❑ Make sure that there is no packing material inside the printer.
- ❑ Make sure that your outlet works and that it is not controlled by a wall switch or timer.
- ❑ The printer's voltage may not match the outlet rating. Unplug the printer immediately. Then, check the printer labels.

If the voltage does not match, **DO NOT PLUG YOUR PRINTER BACK IN**. Contact your dealer.

- ❑ If you are trying to print a large image, your computer may not have enough memory to print. Try printing a smaller image.
- ❑ Clear any stalled print jobs from the Spool Manager. For instructions, see "Using EPSON Spool Manager" on page 3-3.
- ❑ If the printer sounds like it is trying to print, but is unable to, run the Head Cleaning utility.

If this does not work, replace the ink cartridges. See "Replacing an Empty Ink Cartridge" on page 5-1 for instructions.

- ❑ Make sure there are no error messages displayed. If an error message indicates that the ink cartridges need replacing, click the How To button and follow the on-screen instructions.

Paper Doesn't Feed Correctly

If one of the following problems has occurred, try the solution(s) listed for the problem.

- ❑ Paper doesn't feed

- ❑ Multiple pages feed
- ❑ The paper jams
- ❑ Paper isn't ejected fully or is wrinkled

Paper doesn't feed

Remove the stack of paper and make sure of the following:

- ❑ The paper isn't curled or creased.
- ❑ The paper isn't too old. See the instructions that came with the paper for more information.
- ❑ The paper isn't loaded above the arrow on the left edge guide.
- ❑ The paper isn't jammed inside. If it is, remove the jammed paper.
- ❑ The black and/or color ink cartridges are not out. If one is, replace the appropriate cartridge. See "Replacing an Empty Ink Cartridge" on page 5-1 for details.

Then, load the paper again. Make sure you follow any special loading instructions that came with your paper. See also "Paper Handling" on page 19.

Multiple pages feed

Remove the stack of paper and make sure the paper is not too thin. See "Paper" on page A-1 for specifications. Fan the edges of the stack to separate the sheets, then reload the paper.

If too many copies of a document are being printed, check the Copies setting in both the printer driver and your application. For instructions, see "Modifying the printout style" on page 2-13.

The paper jams

Follow the on-screen instructions. Click Eject to eject any jammed paper. If paper is still jammed inside the printer, click Stop, then open the printer cover and remove the paper.

Note:

If you cannot remove a foreign object easily by yourself, do not use force and do not disassemble the printer. Call your dealer for assistance.

If paper jams frequently in your printer, make sure of the following:

- The paper is smooth, not curled or wrinkled.
- The paper is of high-quality, loaded with the printable side up.
- The paper stack was fanned before loading.
- The paper isn't loaded above the arrow on the left edge guide.
- The left edge guide is adjusted to fit your paper.

Paper isn't ejected fully or is wrinkled

If the paper doesn't eject fully, click Stop on the Progress Meter, then open the printer cover and remove the paper. Also, check the Paper Size setting in your application or printer driver.

If the paper is wrinkled when it comes out, it may be damp or too thin. Load a new stack.

Note:

Store any unused paper in its original packaging in a dry area. See "Paper" on page A-1 for specifications.

Options and Consumable Products

Options

EPSON supplies the following interface cable for your printer. However, you can use any interface cable that meets these specifications. See your computer manual for any additional requirements.

USB Interface Cable (shielded) C83623* from Series A4-pin (computer) to Series B4-pin (printer)

This cable supports bidirectional communication.

Note:

- The asterisk (*) is a substitute for the last digit of the product number, which varies by location.*
- Depending on your geographic location, this cable may not be supplied.*



Caution:

Use only interface cables which meet the specifications listed above. Using other cables not covered by EPSON warranties may cause the printer to malfunction.

Consumable products

Ink cartridges

You can use the following cartridges with your printer.

Black ink cartridge	T013
Color ink cartridge	T014

Note:

The product numbers of ink cartridges may vary by location.

Media types

EPSON offers specially-designed media for ink jet printers to meet most high-quality printing needs.

The available media types are listed below.

EPSON Premium Ink Jet Plain Paper (A4)	S041214
EPSON 360 dpi Ink Jet Paper (A4)	S041059 S041025
EPSON 360 dpi Ink Jet Paper (Letter)	S041060 S041028
EPSON Iron-On Cool Peel Transfer Paper (A4)	S041154
EPSON Iron-On Cool Peel Transfer Paper (Letter)	S041153 S041155
EPSON Photo Quality Ink Jet Paper (A4)	S041061 S041026
EPSON Photo Quality Ink Jet Paper (Letter)	S041062 S041029
EPSON Photo Quality Ink Jet Paper (Legal)	S041067 S041048
EPSON Photo Quality Ink Jet Cards (A6)	S041054
EPSON Photo Quality Ink Jet Cards (5 × 8")	S041121
EPSON Photo Quality Ink Jet Cards (8 × 10")	S041122
EPSON Photo Quality Self Adhesive Sheets (A4)	S041106
EPSON Ink Jet Note Cards A6 (with envelopes)	S041147
EPSON Ink Jet Greeting Cards 5 × 8" (with envelopes)	S041148
EPSON Ink Jet Greeting Cards 8 × 10" (with envelopes)	S041149

EPSON Matte Paper-Heavyweight (A4)	S041256 S041258 S041259
EPSON Matte Paper-Heavyweight (Letter)	S041257
EPSON Photo Paper (A4)	S041140
EPSON Photo Paper (Letter)	S041141
EPSON Photo Paper (4 × 6")	S041134
EPSON Photo Paper (100 × 150 mm)	S041255
EPSON Photo Paper (200 × 300 mm)	S041254
EPSON Panoramic Photo Paper (210 × 594 mm)	S041145
EPSON Photo Paper Cards (A4)	S041177
EPSON Photo Quality Glossy Film (A4)	S041071
EPSON Photo Quality Glossy Film (Letter)	S041072
EPSON Photo Quality Glossy Film (A6)	S041107
EPSON Photo Stickers 16 (A6)	S041144
EPSON Photo Stickers 4 (A6)	S041176
EPSON Ink Jet Transparencies (A4)	S041063
EPSON Ink Jet Transparencies (Letter)	S041064

Note:

The availability of special media varies by location.

Printer Specifications

Printing

Printing method	On-demand ink jet
Nozzle configuration	Monochrome (black) 48 nozzles Color (cyan, magenta, yellow) 45 nozzles (15 [each color] × 3)
Resolution	Maximum 720 dpi × 720 dpi
Print direction	Bidirectional with logic seeking
Control code	ESC/P Raster EPSON Remote
Input buffer	16 KB

Paper

Note:

Since the quality of any particular brand or type of paper may be changed by the manufacturer at any time, EPSON cannot attest to the quality of any non-EPSON brand or type of paper. Always test samples of paper stock before purchasing large quantities or printing large jobs.

Paper specifications

Single sheets:

Size	A4 (210 mm × 297 mm) A5 (148 mm × 210 mm) Letter (216 mm × 279 mm) Legal (216 mm × 356 mm)
Paper types	Plain bond paper, special paper distributed by EPSON
Thickness (for plain bond paper)	0.08 mm to 0.11 mm (0.003 to 0.004 inch)
Weight (for plain bond paper)	64 g/m ² (17 lb) to 90 g/m ² (24 lb)

Envelopes:

Size	No. 10 (104.8 mm × 241 mm) DL (110 mm × 220 mm) C6 (114 mm × 162 mm) 132 mm × 220 mm
Paper types	Plain bond paper, air mail
Thickness	0.16 mm to 0.52 mm (0.006 to 0.02 inch)
Weight	45 g/m ² (12 lb) to 75 g/m ² (20 lb)

Index Cards:

Size	A6 (105 mm × 148 mm) 5 × 8" (127 mm × 203 mm) 8 × 10" (203 mm × 254 mm)
Paper types	Special paper distributed by EPSON

Transparencies, Glossy Film:

Size	A4 (210 mm × 297 mm) Letter (216 mm × 279 mm) A6 (105 mm × 148 mm) for glossy film
Paper types	Special paper distributed by EPSON

Self Adhesive Sheets:

Size	A4 (210 mm × 297 mm)
Paper types	Special paper distributed by EPSON

Matte Paper-Heavyweight:

Size	A4 (210 mm × 297 mm) Letter (216 mm × 279 mm)
Paper types	Special paper distributed by EPSON

Photo Paper:

Size	A4 (210 mm × 297 mm) Letter (216 mm × 279 mm) 4 × 6" (102 mm × 152 mm) 100 mm × 150 mm 200 mm × 300 mm
Paper types	Special paper distributed by EPSON

Photo Stickers:

Size	A6 (105 mm × 148 mm) with 4 or 16 frames
Paper types	Special paper distributed by EPSON

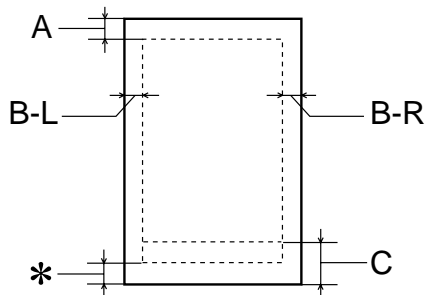
Note:

- ❑ *Poor quality paper may reduce print quality and cause paper jams or other problems. If you encounter problems, switch to a higher grade of paper.*

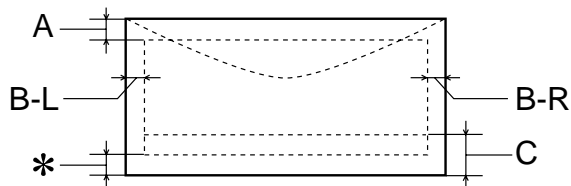
- ❑ Do not load curled or folded paper.
- ❑ Use paper under normal conditions:
Temperature 15 to 25°C (59 to 77°F)
Humidity 40 to 60% RH

Printable area

Single sheets (including panoramic size) and index cards



Envelopes



A: The minimum top margin is 3.0 mm (0.12").

When loading multiple sheets of EPSON Photo Quality Glossy Film, the minimum top margin is 30.0 mm (1.2").

- B-L: The minimum left margin is 3.0 mm (0.12").
- B-R: The minimum right margin is 3.0 mm (0.12").
- C: The minimum bottom margin is 14.0 mm (0.55").

When printing near the minimum bottom margin, some colors may not be printed properly. If this occurs, try increasing the bottom margin.

- *: You can extend the minimum bottom margin to 3 mm by selecting **Maximum** as the Printable Area setting on the printer driver's Paper menu (Windows) or in the Page Setup dialog box (Macintosh). However, print quality may decline in the expanded area. Before printing large jobs using this setting, print a single sheet to confirm printout quality.

Note:

Always load paper into the sheet feeder short edge first. Load envelopes flap edge first with the flap side down.

Ink Cartridges

Black ink cartridge (T013)

Color	Black
Print capacity*	300 pages, comparable with 3.5% ECMA (ISO 10561) at 360 dpi 210 pages, 5% in calculation
Cartridge life	2 years from production date (within 6 months after opening package, at 25°C [77°F])
Temperature	Storage: -20 to 40°C (-4 to 104°F) 1 month at 40°C (104°F) Transit: -30 to 60°C (-22 to 140°F) 1 month at 40°C (104°F) 120 hours at 60°C (140°F) Freezing:** -16°C (3.2°F)
Dimensions	19.8 mm (W) × 52.7 mm (D) × 38.5 mm (H)

Color ink cartridge (T014)

Color	Cyan, magenta, and yellow
Print capacity*	150 pages, 5% each CMY (total 15%) in calculation
Cartridge life	2 years from production date (within 6 months of opening the package at 25°C [77°F])
Temperature	Storage: -20 to 40°C (-4 to 104°F) 1 month at 40°C (104°F) Transit: -30 to 60°C (-22 to 140°F) 1 month at 40°C (104°F) 120 hours at 60°C (140°F) Freezing:** -18°C (-0.4°F)
Dimensions	42.9 mm (W) × 52.7 mm (D) × 38.5 mm (H)

* The print capacity may vary, depending on how often you clean the print head and how often you use the printer.

** Ink thaws and is usable after approximately 3 hours at 25°C (77°F).



Caution:

- EPSON recommends the use of original EPSON ink cartridges only. Other products not manufactured by EPSON may cause damage to your printer not covered by EPSON's warranties.*
- Do not use an ink cartridge if the date on the package has expired.*

Mechanical

Paper feed method	Friction
Paper path	Sheet feeder, rear entry
Sheet feeder capacity	About 100 sheets at 64 g/m ² (17 lb) paper
Dimensions	Storage Width: 431 mm (17.0 inches) Depth: 210 mm (8.3 inches) Height: 160 mm (6.3 inches) Printing Width: 431 mm (17.0 inches) Depth: 476 mm (18.7 inches) Height: 271 mm (10.7 inches)
Weight	3.2 kg (7.1 lb) without the ink cartridges

Electrical

	120 V Model	220-240 V Model
Input voltage range	99 to 132 V	198 to 264 V
Rated frequency range	50 to 60 Hz	
Input frequency range	49.5 to 60.5 Hz	
Rated current	0.4 A	0.2 A
Power consumption	Approx. 21 W (ISO10561 Letter Pattern)	
	Approx. 5 W in standby mode	Approx. 5.5 W in standby mode

Note:

Check the label on the back of the printer for the voltage of your printer.

Environmental

Temperature	Operation: 10 to 35°C (50 to 95°F) Storage: -20 to 40°C (-4 to 104°F) 1 month at 40°C (104°F) Transit: * -20 to 60°C (-4 to 140°F) 120 hours at 60°C (140°F)
Humidity	Operation: 20 to 80% RH Storage: *, ** 5 to 85% RH

* Stored in shipping container

** Without condensation

Safety Approvals

Safety standards:

U.S. model	UL 1950 CSA C22.2 No.950
European model	Directive 73/23/EEC EN60950

EMC:

U.S. model	FCC part 15 subpart B class B
European model	Directive 89/336/EEC EN 55022 (CISPR Pub. 22) class B EN 55024 EN 61000-3-2 EN 61000-3-3
Australian model	AS/NZS 3548 class B

System Requirements

To use your printer, you need to have Microsoft® Windows® Millennium Edition, Windows® 98, or Windows® 2000 installed and the printer must be connected via a standard, shielded USB cable.

Your computer should also meet the following system requirements.

Minimum System Requirements	Recommended System
Pentium 150 MHz Processor for Windows Me i486/66 MHz for Windows 98 Pentium 133 MHz for Windows 2000	Pentium 150 MHz or higher processor for Windows Me Pentium or better processor for Windows 98 133 MHz or higher processor for Windows Me and 2000
16 MB RAM for Windows 98 32 MB RAM for Windows Me and 2000	32 MB RAM or more for Windows 98 64 MB or more for Windows Me and 2000
20 MB hard disk space for Windows Me and 98 40 MB hard disk space for Windows 2000	50 MB or more hard disk space for Windows Me and 98 100 MB or more for Windows 2000

VGA monitor	VGA or better monitor
-------------	-----------------------

Your computer dealer can help you update your system if it does not meet these requirements.

Customer Support

Technical Support Web Site

EPSON's Technical Support Web Site provides help for problems that cannot be solved using the troubleshooting information in your printer documentation. If you have a Web browser and can connect to the Internet, access that site at:

<http://www.epson.com.tw/imaging/service/tech.htm>

Regional Customer Services

If your EPSON product is not operating properly and you cannot solve the problem using the troubleshooting information in your product documentation, contact customer support services for assistance. If customer support for your area is not listed below, contact the dealer where you purchased your product.

Customer support will be able to help you much more quickly if you provide the following information:

- Product serial number
(The serial number label is usually on the back of the product)
- Product model
- Product software version
(Click About, Version Info, or similar button in the product software)
- Brand and model of your computer

- ❑ Name and version of your computer operating system
- ❑ Names and versions of the applications you normally use with your product

For United States Users

EPSON provides technical assistance 24 hours a day through the electronic support services and automated telephone services listed below. If you wish to speak directly to a technical support representative, see your Printer Basics book for contact information.

Note:

For help using any other software on your system, see the documentation for that software for technical support information.

World Wide Web

From the Internet, you can reach EPSON Support at <http://support.epson.com>. At this site, you can download drivers and other files, look at documentation such as product brochures and user manuals, and access troubleshooting information.

EPSON Internet FTP Site

If you have Internet FTP capability, use your Web browser (or other software for FTP downloading) to log onto <ftp.epson.com> with the user name anonymous and your e-mail address as the password.

EPSON E-Mail Technical Support

To receive technical advice through e-mail, go to <http://support.epson.com> and complete the form under the troubleshooting tab, as requested.

Automated Telephone Services

A variety of automated help services are available 24 hours a day, seven days a week. To use these services, you must have a touch tone telephone and call (800) 922-8911.

EPSON Accessories

You can purchase ink cartridges, paper, manuals, and accessories from EPSON Accessories at (800) 873-7766 or visit our web site at www.epsonsupplies.com (U.S. sales only). In Canada, please call (800) 873-7766 for dealer referral.

For users in the United Kingdom and the Republic of Ireland

If you purchased your product in the UK or the Republic of Ireland, EPSON (UK) LTD provides a range of customer services and technical support.

Support via the World Wide Web

- For information on the latest EPSON products, software drivers, online user guides, and answers to frequently asked questions:

<http://www.epson.co.uk>

- To e-mail EPSON Technical Support:

<http://www.epson.co.uk/support/email/>

- For a full list of EPSON Customer and Warranty Support services:

<http://www.epson.co.uk/support/>

Support via Telephone

Our Customer and Warranty Support teams can be contacted by calling 0870 163 7766 in the UK or 0044 0870 163 7766 from the Republic of Ireland. They can provide the following services:

- ❑ Technical information on installing, configuring, and operating your EPSON products
- ❑ Arranging for faulty EPSON products to be repaired within the warranty period

Pre-Sales Enquiry Desk

Our Enquiry Desk team can be contacted by calling 0800 220546 in the UK or 1 800 409132 from the Republic of Ireland, by faxing 01442 227271 in the UK or 0044 1442 227271 from the Republic of Ireland, and via e-mail at info@epson.co.uk. They can provide the following information:

- ❑ Pre-sales information and literature on new EPSON products (also available via our World Wide Web site at <http://www.epson.co.uk>)
- ❑ Where to purchase genuine EPSON consumables, accessories, and options

For users in Australia

EPSON Australia wishes to provide you with a high level of customer service. In addition to this *User's Guide*, we provide the following sources for obtaining information:

Your dealer

Don't forget that your dealer can often help identify and resolve problems. The dealer should always be the first call for advice on problems. They can often solve problems quickly and easily as well as give you advice on the next step to take.

Internet URL <http://www.epson.com.au>

Access the EPSON Australia World Wide Web pages. Worth taking your modem here for the occasional surf! You can get the same information as offered on the EPSON FAXBACK and the EPSON Bulletin Board, plus more.

EPSON FAXBACK

EPSON FAXBACK will fax you the latest specifications and pricing for most EPSON products offered in Australia. There is also technical information including details of the latest software and drivers available. Phone (02) 9903 9075 and the system will guide you through a number of choices before faxing the information to your fax machine.

EPSON Helpdesk

EPSON Helpdesk is provided as a final backup to make sure that our clients have access to advice. Operators at the Helpdesk can aid you in diagnosing hardware and software problems. They can also advise you on the latest EPSON products and where the nearest dealer or service agent is located. Many types of queries are answered here.

The Helpdesk numbers are:

Phone: 1300 361 054

Fax: (02) 9903 9189

We encourage you to have all the relevant information on hand when you ring. The more information you prepare, the faster we can help solve the problem. This information includes the *User's Guide* for your EPSON product, type of computer, operating system, application programs, and any other information you feel is required.

For users in India

Contacts for information, support, and services are:

World Wide Web (www.epson.co.in)

Information on product specifications, drivers for download, Frequently Asked Questions (FAQ), Products Enquiry, and Technical Query are available.

Epson India Bangalore Head Office

Phone: 5321 266-70

Fax: 5581799/5321095

For users in Malaysia

Contacts for information, support, and services are:

World Wide Web (www.epson.com.my)

Information on product specifications, drivers for download, Frequently Asked Questions (FAQ), and Email Enquiries are available.

Epson Trading Shah Alam Head Office

Phone: 03 5191366

Fax: 03 5191281

For users in Singapore

Sources of information, support, and services available from Epson Singapore are:

World Wide Web (www.epson.com.sg)

Information on product specifications, drivers for download, Frequently Asked Questions (FAQ), Sales Enquiries, and Technical Support via e-mail are available.

Epson HelpDesk [phone: (065) 5863111]

Our HelpDesk team can help you with the following over the phone:

- Sales enquiries and product information
- Product usage questions or problem
- Enquiries on repair service and warranty

For users in Hong Kong

To obtain technical support as well as other after-sales services, users are welcome to contact EPSON Hong Kong Limited.

Internet home page

EPSON Hong Kong has established a local home page in both Chinese and English on the Internet to provide users with the following information:

- Product information
- Answers to Frequently Asked Questions (FAQs)
- Latest versions of EPSON product drivers

Users can access our World Wide Web home page at:

<http://www.epson.com.hk>

Electronic bulletin board system

An electronic bulletin board system (BBS) is also available to obtain product information and the latest versions of product drivers. You can log on to the following number for the BBS service:

BBS: (852) 2827-4244

Technical Support Hotline

You can also contact our technical staff at the following telephone and fax numbers:

Phone: (852) 2585-4399

Fax: (852) 2827-4383

For users in the Philippines

To obtain technical support as well as other after-sales services, users are welcome to contact the EPSON Philippines Representative Office at the telephone and fax numbers below:

Phone: (632) 813-6552

Fax: (632) 813-6545

BBS: (632) 814-0595

Glossary

The following definitions apply specifically to printers.

application

A software program that helps you carry out a particular task, such as word processing or financial planning.

ASCII

American Standard Code for Information Interchange. A standardized coding system for assigning numerical codes to letters and symbols.

banding

The horizontal lines that sometimes appear when printing graphics. This occurs when the print head is misaligned. See also *MicroWeave*.

bit

A binary digit (0 or 1), which is the smallest unit of information used by a printer or computer.

brightness

The lightness or darkness of an image.

buffer

The portion of the printer's memory used to store data before printing it.

byte

A unit of information consisting of eight bits.

characters per inch (cpi)

A measure of the size of text characters, sometimes referred to as pitch.

CMYK

Cyan (blue-green), magenta, yellow, and black. These colored inks are used to create the subtractive system array of printed colors.

color matching

A method of processing color data so that colors displayed on a computer screen closely match colors in printouts. A variety of color-matching software is available.

ColorSync

Macintosh software that is designed to help you get WYSIWYG (what you see is what you get) color output. This software prints colors as you see them on your screen.

cpi

See *characters per inch*.

default

A value or setting that takes effect when the equipment is turned on, reset, or initialized.

DMA

Direct Memory Access. A data transfer feature that bypasses a computer's CPU and allows direct communication between a computer and peripheral devices (like printers), and between one peripheral device and another.

dpi

Dots per inch. The dpi measures the resolution. See also *resolution*.

drive

A memory device, such as a CD-ROM drive, hard disk, or floppy disk. In Windows, a letter is assigned to each drive for easy management.

driver

A software program that sends instructions to a computer peripheral to tell it what to do. For example, your printer driver accepts print data from your word processor application and sends instructions to the printer on how to print this data.

economy printing

Printing in which images are printed using fewer dots to save ink.

error diffusion

Error diffusion blends individual colored dots with the colors of the surrounding dots to create the appearance of natural colors. By blending colored dots, the printer can achieve excellent colors and subtle color gradation. This method is best suited for printing documents that contain detailed graphics or photographic images.

ESC/P

Abbreviation for EPSON Standard Code for Printers, the system of commands your computer uses to control your printer. It is standard for all EPSON printers and is supported by most applications for personal computers.

Finest detail

This printer driver setting automatically makes your printout sharper and clearer, especially for text. Be aware that this may increase the time required for printing.

font

A style of type designated by a family name.

grayscale

A scale of shades of gray from black to white. Grayscale is used to represent colors when printing with black ink only.

halftones

Patterns of black or colored dots used to reproduce an image.

high speed printing

Printing in which images are printed in both directions. This provides faster printing.

ICM (Image Color Matching)

The color-matching method used by Windows Me, 98, 95, and 2000 to match the colors in your printout with the colors displayed on your screen.

initialization

Returns the printer to its defaults (fixed set of conditions). This happens every time you turn on the printer or reset the printer.

ink cartridge

Contains the ink your printer uses when printing.

ink jet

A method of printing in which each letter or symbol is formed by precisely spraying ink onto paper.

interface

The connection between the computer and the printer. A parallel interface transmits data one character or code at a time. A serial interface transmits data one bit at a time.

interface cable

The cable that connects the computer and the printer.

local printer

The printer connected to the computer's port directly by interface cable.

media

Materials upon which data is printed, such as envelopes, plain paper, special paper, and transparency film.

memory

The part of the printer's electronic system that is used to store information (data). Some information is fixed and is used to control how the printer operates. Information that is sent to the printer from the computer is stored in memory temporarily. See also *RAM* and *ROM*.

MicroWeave

Printing in which images are printed in finer increments to reduce the possibility of banding and to produce laser-like images. See also *banding*.

monochrome

Printing with only one color of ink, usually black.

nozzle

Fine tubes in the print head through which ink is sprayed onto the page. Print quality may decline if the print head nozzles are clogged.

operation check

A method for checking the operation of the printer. When you perform a printer operation check, the printer prints the ROM version, code page, ink counter code, and a nozzle check pattern.

parallel interface

See *interface*.

port

An interface channel through which data is transmitted between devices.

printable area

The area of a page on which the printer can print. It is smaller than the physical size of the page due to margins.

printer driver

A software program that sends commands for using the features of a particular printer. See also *driver*.

print queue

If your printer is connected to a network, print jobs that are sent to the printer while it is busy are stored in a waiting line, or print queue, until they can be printed.

RAM

Random Access Memory. The portion of the printer's memory used as a buffer and for storing user-defined characters. All data stored in RAM is lost when the printer is turned off.

reset

To return a printer to its defaults by turning the printer off and then back on.

resolution

The number of dots-per-inch used to represent an image.

ROM

Read Only Memory. A portion of memory that can only be read and cannot be used for data storage. ROM retains its contents when you turn off the printer.

RGB

Red, green, and blue. These colors, in phosphors irradiated by a cathode ray tube (CRT) monitor's electron gun, are used to create the additive array of screen colors.

serial interface

See *interface*.

spool

The first step in printing, in which the printer driver converts the print data into codes that your printer understands. This data is then sent directly to the printer or to the print server.

spool manager

The software program that converts print data into codes that your printer understands. See also *spool*.

sRGB

The color management method used to maintain color consistency between devices which adhere to the sRGB standard.

Status Monitor

The software program that allows you to check the printer's status.

subtractive colors

Colors produced by pigments that absorb some colors of light and reflect others. See also *CMYK*.

USB interface

Universal Serial Bus interface. Enables the user to connect up to 127 peripheral devices (such as keyboards, mice, and printers) to the computer through a single, general-purpose port. The use of USB hubs allows you to add additional ports. See also *interface*.

WYSIWYG

What-you-see-is-what-you-get. This term is used to describe printout that looks exactly like it appears on-screen.

