

Where to Find Information

Setup Guide (this document)

Describes how to set up and use the scanner. Basic scanning operations are covered. It also explains how to install and configure the EPSON scanner software and options, and describes how to make basic software settings and use the Start Button function.

EPSON Scan Server & EPSON TWAIN Pro Network User's Guide

Provides detailed instructions for installing and using EPSON Scan Server and EPSON TWAIN Pro Network software.

Online Reference Guide

Provides basic information about scanning and detailed reference on settings and functions of EPSON TWAIN Pro and other EPSON scanner utility software. It also includes information on how to calibrate your system, maintenance and troubleshooting tips, technical specifications, and customer support information. Explanations about EPSON TWAIN Pro also apply to EPSON TWAIN Pro Network.

Online Color Guide (may not be available in some countries)

Explains the basics of color imaging and how to get impressive results from your scanner and other EPSON products.

Information on EPSON TWAIN Pro and EPSON TWAIN Pro Network (online help)

Provides you with detailed information on EPSON TWAIN Pro and EPSON TWAIN Pro Network. To display the online help, click the ? or Help button in the dialog box of EPSON TWAIN Pro or EPSON TWAIN Pro Network.

Information on PageManager and other software

Refer to the respective documentation provided on the EPSON Scanner Software CD-ROM or the other software CD-ROM.

EPSON® GT-10000+

Color Image Scanner

All rights reserved. No part of this publication may be reproduced, stored in a retrieval system, or transmitted in any form or by any means, electronic, mechanical, photocopying, recording, or otherwise, without the prior written permission of SEIKO EPSON CORPORATION. No patent liability is assumed with respect to the use of the information contained herein. Neither is any liability assumed for damages resulting from the use of the information contained herein.

Neither SEIKO EPSON CORPORATION nor its affiliates shall be liable to the purchaser of this product or third parties for damages, losses, costs, or expenses incurred by purchaser or third parties as a result of: accident, misuse, or abuse of this product or unauthorized modifications, repairs, or alterations to this product.

SEIKO EPSON CORPORATION and its affiliates shall not be liable against any damages or problems arising from the use of any options or any consumable products other than those designated as Original EPSON Products or EPSON Approved Products by SEIKO EPSON CORPORATION.

EPSON is a registered trademark of SEIKO EPSON CORPORATION.

IBM and PS/2 are registered trademarks of International Business Machines Corporation.

Apple, Macintosh, Mac, iMac, and Power Macintosh are registered trademarks of Apple Computer, Inc.

Microsoft and Windows are registered trademarks of Microsoft Corporation in the United States of America and other countries.

Presto! is a trademark of NewSoft Technology Corporation.

General Notice: Other product names used herein are for identification purposes only and may be trademarks of their respective companies.

Copyright © 2000 by SEIKO EPSON CORPORATION, Nagano, Japan.



Printed on Recycled Paper.

Setup Guide

Contents

Where to Find Information 1

Contents iii

Safety Instructions

Important Safety Instructions	1
Warnings, Cautions, and Notes	2
ENERGY STAR Compliance	2

Chapter 1 Getting to Know Your Scanner

Features	1-2
Unpacking the Scanner	1-4
Attaching the Document Guide Strip	1-5
Scanner Parts	1-6
Lights and Buttons	1-7
Options	1-9

Chapter 2 Setting up the Scanner

Choosing a Place for the Scanner	2-2
Releasing the Transportation Lock	2-4
Plugging in the Scanner	2-5
Initialization	2-6
Connecting the Scanner to Your PC using the SCSI Interface	2-7
Understanding SCSI connections	2-7
Setting the SCSI ID number	2-9
Setting the terminator switch	2-10
Connecting the scanner	2-11
Power-on sequence	2-13
Power-off sequence	2-14

Chapter 3 Installing the Software

System Requirements	3-2
Installing the Scanner Software	3-3
For Windows 98 and 2000 users	3-3
For Windows 95 and NT 4.0 users	3-10
Calibrating Your Screen	3-16
Selecting Scanners	3-17
For Windows 98 and 2000 users	3-18
For Windows 95 and NT4.0 users	3-20

Chapter 4 Using Your Scanner

Scanning Procedure	4-2
Placing a Document on the Scanner	4-2
Removing the Cover for Thick or Large Documents	4-5
Starting EPSON TWAIN Pro	4-6
Scanning an Image	4-8
Saving the Scanned Image	4-21
Scanning by Pressing the Start Button	4-22

Chapter 5 Using the Start Button

The Start Button Feature	5-2
PageManager for EPSON	5-3
Target applications in the Scan Buttons bar	5-3
Assigning an application to the Start button.	5-4
Adding applications to the Scan Buttons bar	5-6
Registering new applications.	5-7
Setting up EPSON Scanner Monitor	5-9
Setting up the Start Button Feature for Windows 98 and 2000	5-11

Chapter 6 Options

Using the Automatic Document Feeder	6-2
Unpacking the Automatic Document Feeder	6-2

Installing the Automatic Document Feeder	6-3
Loading documents into your Automatic Document Feeder	6-7
Loading documents manually	6-8
Scanning from the Automatic Document Feeder	6-9
Changing orientation of scanned images	6-11
Fixing paper jams in the Automatic Document Feeder . . .	6-14
Document specifications	6-16
Using the IEEE 1394 Interface Board	6-17
Installing the IEEE 1394 interface board to your scanner. .	6-18
Understanding IEEE 1394 connections	6-20
Connecting to your computer.	6-20
Installing the scanner software.	6-22

Glossary

Safety Instructions

Important Safety Instructions

Read all these instructions and save them for later reference. Follow all warnings and instructions marked on the scanner.

- ❑ Unplug the scanner before cleaning. Clean with a damp cloth only. Do not spill liquid on the scanner.
- ❑ Do not place the scanner on an unstable surface, or near a radiator or heat source.
- ❑ Use only the type of power source indicated on the scanner's label.
- ❑ Connect all equipment to properly grounded wall outlets. Avoid using outlets on the same circuit as photocopiers or air control systems that regularly switch on and off.
- ❑ Do not let the power cord become damaged or frayed.
- ❑ If you use an extension cord with the scanner, make sure the total ampere rating of the devices plugged into the extension cord does not exceed the cord's ampere rating. Also, make sure the total ampere rating of all devices plugged into the wall outlet does not exceed the wall outlet's ampere rating.
- ❑ Except as specifically explained in this *Setup Guide* and the *Online Reference Guide*, do not attempt to service the scanner yourself.

- ❑ Unplug the scanner and refer servicing to qualified service personnel under the following conditions:

If the power cord or plug is damaged; if liquid has entered the scanner; if the scanner has been dropped or the case damaged; if the scanner does not operate normally or exhibits a distinct change in performance. (Do not adjust controls that are not covered by the operating instructions.)

Warnings, Cautions, and Notes



Warnings must be followed carefully to avoid bodily injury.



Cautions must be observed to avoid damage to your equipment.

Notes contain important information and useful tips on the operation of your scanner.

ENERGY STAR Compliance

As an ENERGY STAR Partner, EPSON has determined that this product meets the ENERGY STAR guidelines for energy efficiency.

The International ENERGY STAR Office Equipment Program is a voluntary partnership with the computer and office equipment industry to promote the introduction of energy-efficient personal computers, monitors, printers, fax machines, copiers, and scanners, in an effort to reduce air pollution caused by power generation.



Features 1-2

Unpacking the Scanner 1-4

Attaching the Document Guide Strip 1-5

Scanner Parts 1-6

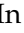
Lights and Buttons 1-7

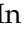
Options 1-9

Features

The EPSON GT-10000+ scanner offers the following features:

- ❑ Maximum optical resolution of 600 dots per inch (dpi) for main scanning, and 2400 dpi with micro step for sub scanning.
- ❑ A3/US B (Ledger) size scanning area.
- ❑ Start Button control for shortcut local and networked scanning operation.

In the stand-alone configuration, pressing the  Start button on the scanner can automatically start a scanning sequence by invoking Page Manager and EPSON TWAIN Pro, scanning documents, launching a graphical application and importing the scanned image to the application.

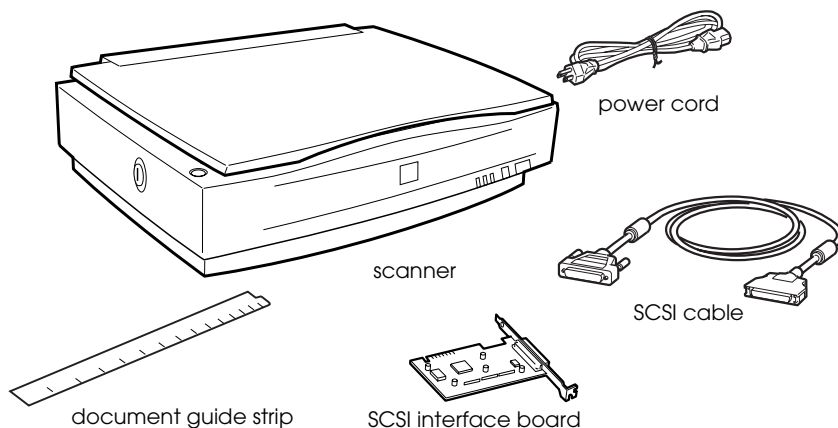
In the networked configuration, pressing the  Start button on the scanner starts the same operation as clicking the **SCAN** button in the EPSON TWAIN Pro Network dialog box.

- ❑ Full color or grayscale scanning (36-bit input, 24-bit output).
- ❑ EPSON TWAIN Pro lets you take full advantage of your scanner's advanced features.
- ❑ EPSON TWAIN Pro Network and EPSON Scan Server software work together to directly control all of the features of your EPSON scanner in a networked environment.
- ❑ The Unsharp Mask option of EPSON TWAIN Pro and EPSON TWAIN Pro Network automatically sharpens the image to provide crisp detail.
- ❑ The De-screening option of EPSON TWAIN Pro and EPSON TWAIN Pro Network automatically removes unwanted moiré patterns from scanned images for higher quality output.

- ❑ Auto Area Segmentation (AAS) allows you to separate text from photographs on a page so that grayscale images become clearer and text recognition more accurate.
- ❑ Text Enhancement Technology (TET) enhances text recognition accuracy for optical character recognition (OCR) scanning.
- ❑ The optional Automatic Document Feeder enables continuous sheet scanning. If multiple pages are loaded in the Automatic Document Feeder, the pages are fed from the top and ejected face down.
- ❑ The optional IEEE 1394 Interface Board allows you to connect your PC or scanner to other devices which support the IEEE 1394 standard.
- ❑ The optional EPSON Network Image Express enables a scanner to become sharable on a network without the need to have it connected to a scanner server PC.

Unpacking the Scanner

When you unpack your scanner, make sure the following parts are included and not damaged. If you find any missing or damaged items, contact your EPSON dealer immediately. (Your scanner also comes shipped with CD-ROMs (and/or floppy disks) which contain the driver software to run your scanner, along with other items necessary to use the scanner.)



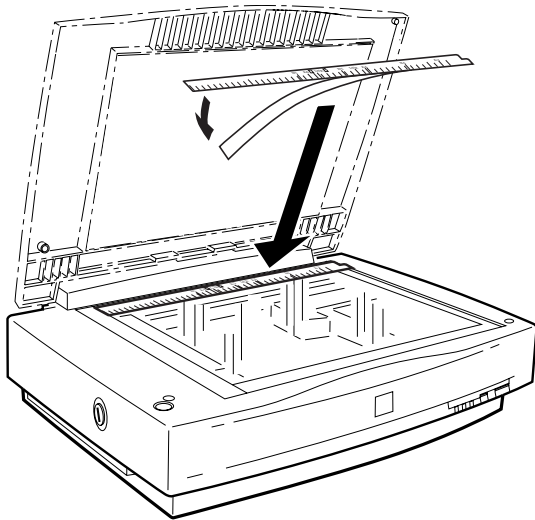
Depending on the country of purchase, the power cord may come attached to the scanner. The shape of the AC plug also varies, so make sure the plug included is the correct shape for the electrical outlet in your country.

If your computer is already equipped with SCSI board, you can use it for allowing the computer to communicate with the scanner. Otherwise, install the SCSI board which comes with the scanner in the computer. For setup of the SCSI board, refer to the manual which comes with it.

Attaching the Document Guide Strip

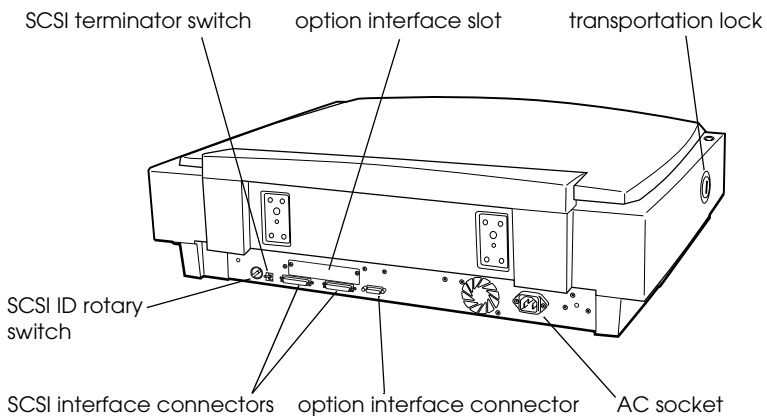
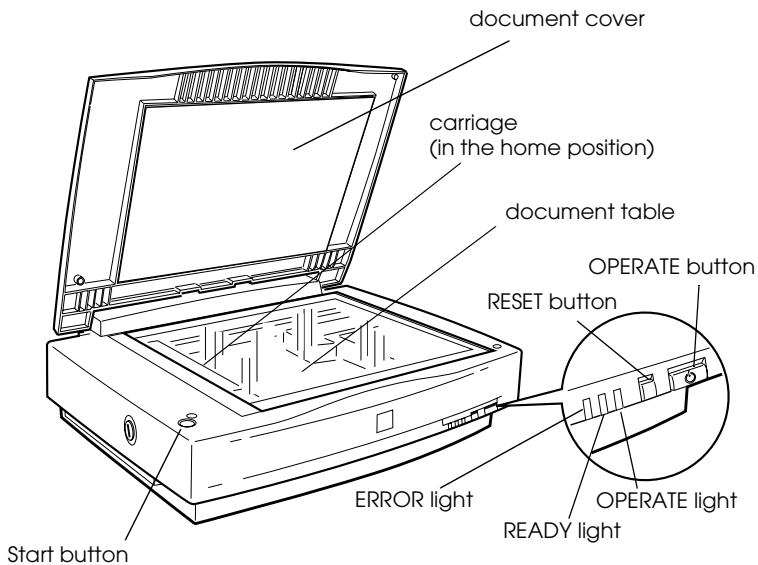
The document guide strip is used to align document's orientation when you place the document on the document table.

Peel off the backing from the document guide strip and place it on the horizontal ruler of the document table so that the notch in the right end matches the slot in the casing as shown.



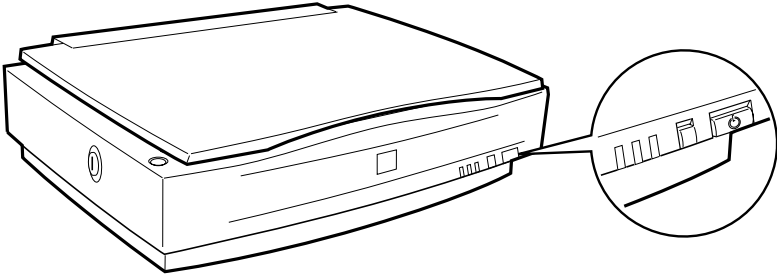
When you use the Automatic Document Feeder, remove the document guide strip from the document table.

Scanner Parts



Lights and Buttons


The scanner has three indicator lights and three buttons.



Lights

Light	Color	Indicator Status	Meaning
OPERATE	Green	Lit	Scanner is turned on.
READY	Green	Lit	Scanner is ready to scan. Error. See your Online Reference Guide.
		Flashing	Scanning operation is in progress. Error. See your Online Reference Guide.
ERROR	Red	Lit	This indicator also lights when an error occurs. See your Online Reference Guide.
		Flashing	

Buttons

Button	Function
OPERATE	Turns the scanner on and off.
RESET	Resets the scanner to its default settings after an error. Pressing this button while scanning is in progress stops the scanner and may cause an error in the scanning software.
 start	<p>The hardware switch to execute scanning and transfer the scanned image to assigned application software in a stand-alone configuration. To use this feature, you need to setup software. See Chapter 5, "Using the Start Button," for more details.</p> <p>In a networked environment it starts the same operation as the Scan button in EPSON TWAIN Pro Network.</p>

Options

The following options expand the capability of your scanner. For detailed information on their use, see Chapter 6 in this guide or documentation come with the option.

Automatic Document Feeder (B81321*)

Designed primarily for optical character recognition (OCR) scanning, the Automatic Document Feeder allows you to scan up to 100 pages automatically, and then cover them to text for use in word processing programs.

IEEE 1394 Interface Board (B80834*)

Allows you to connect your computer or scanner to other devices which support the IEEE 1394 standard.

EPSON Network Image Express (B80836*)

Enables an EPSON scanner supporting EPSON TWAIN Pro Network to become shareable on a network without the need for a scanner server PC, which allows you to use various scanning methods in a networked environment with less power and space.

Note:

The asterisk is a substitute for the last digit of the product number, which varies by country.

Setting up the Scanner

Choosing a Place for the Scanner	2-2
Releasing the Transportation Lock	2-4
Plugging in the Scanner	2-5
Initialization	2-6
Connecting the Scanner to Your PC using the SCSI	
Interface	2-7
Understanding SCSI connections	2-7
Setting the SCSI ID number	2-9
Setting the terminator switch	2-10
Connecting the scanner	2-11
Power-on sequence	2-13
Power-off sequence	2-14

Choosing a Place for the Scanner

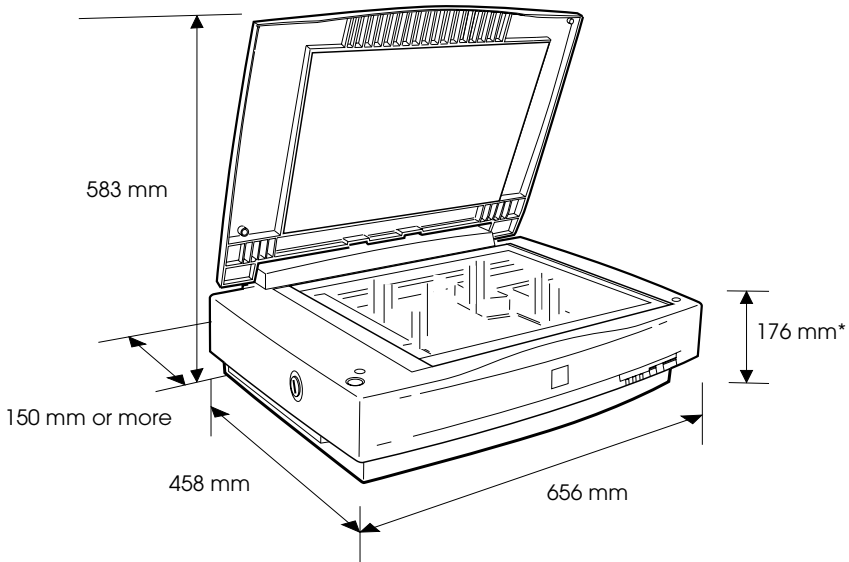
Follow the guidelines below when selecting a location for your scanner:

- ❑ Place the scanner on a flat, stable surface. The scanner will not operate properly if it is tilted at an angle.
- ❑ Place the scanner close enough to the computer for the interface cable to reach it easily.
- ❑ Place the scanner near a wall outlet where the power cord can be easily unplugged.

Note for French-speaking users:

Placez le scanner près d'une prise de courant où la fiche peut-être débranchée facilement.

- ❑ Allow space behind the scanner for the cables, and space above the scanner so that you can raise the document cover fully.



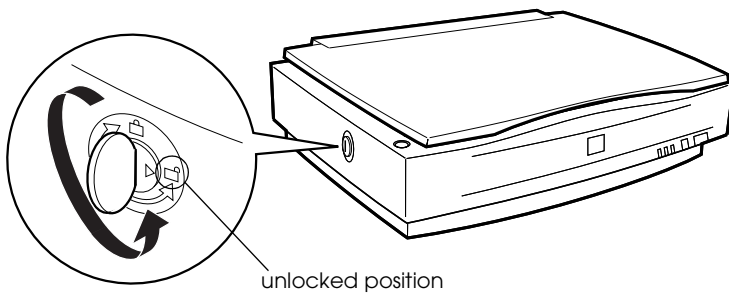
* When document cover is closed.

- ❑ Keep the scanner away from high temperatures, humidity and excessive dirt or dust. Also avoid using or storing the scanner in places subject to rapid changes of temperature and humidity.
- ❑ Keep the scanner away from direct sunlight and strong light sources.
- ❑ Avoid places subject to shocks and vibrations.

Releasing the Transportation Lock

Before connecting the scanner to a power source, you must release the transportation lock.

1. Place the scanner on a flat, stable surface with its left side facing you.
2. Turn the transportation lock to the unlocked position using a coin or smaller disc as shown below.

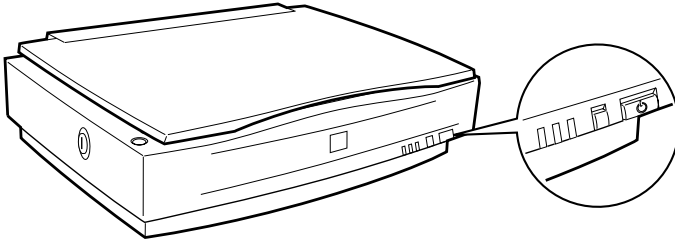


Note:

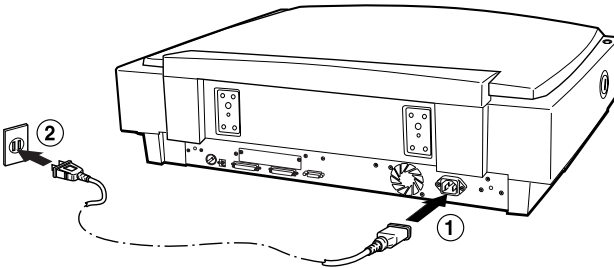
Before you transport the scanner or store it for an extended period of time, secure the carriage by turning the transportation lock back to the locked position.

Plugging in the Scanner

1. Make sure that the scanner is turned off. The scanner is off when the OPERATE button is raised (not depressed).



2. If the power cord is not attached to the scanner, connect it to the AC socket on the back of the scanner, and plug the other end into a properly grounded wall outlet.



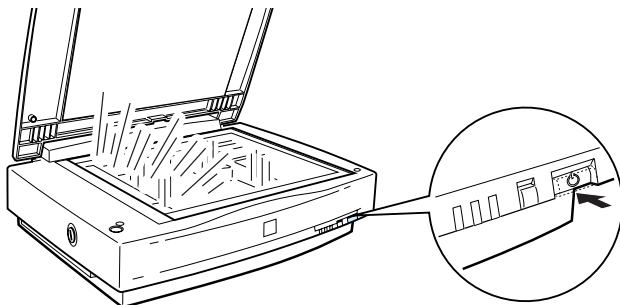
Caution:

It is not possible to change the scanner's voltage. If the label on the back of the scanner does not show the correct voltage for your country, contact your dealer. Do not plug in the power cord.

Initialization

Before connecting the scanner to your PC, follow the steps below to make sure that the scanner is operating properly.

1. Open the document cover so you can see the operation of the scanner during initialization.
2. Turn on the scanner by pressing the OPERATE button.



3. Make sure the carriage moves towards the right slightly and back to its original position, and the fluorescent lamp on the carriage flash.

The READY indicator light comes on, meaning the scanner has completed initialization.

4. Turn off the scanner.

If the scanner does not work as described, make sure the power cord is firmly plugged in and that you have released the transportation lock, then try again.



Caution:

Whenever you turn off the scanner, wait at least 10 seconds before turning it back on. Rapidly turning the scanner on and off can damage the scanner.

Connecting the Scanner to Your PC using the SCSI Interface

For instructions on connecting the scanner to your PC using the SCSI interface, read this section.

Unless your PC already has a SCSI board installed, you need to install one, along with SCSI driver software. Install the SCSI board according to the directions included with it.

If your PC has a SCSI board up and running, connect the scanner as described in the next section.

Note:

- ❑ *You will need to install the SCSI driver that is normally included with Windows 95, 98, NT (see your system documentation for instructions), or 2000, or the driver described in the SCSI board installation documentation.*

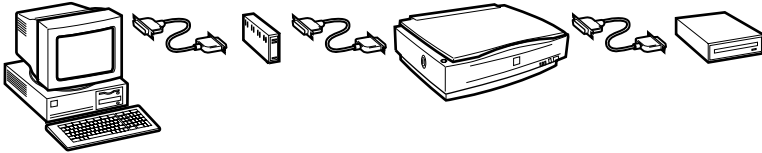
- ❑ *If you are having errors or poor performance, an updated driver may help. The latest driver may be available for download from the Web site of the SCSI board manufacturer.*

Understanding SCSI connections

Read the following sections to determine how to set up your SCSI devices and whether you need any optional SCSI cables.

Daisy Chain

The SCSI interface allows you to connect up to seven devices (such as a scanner, hard disk, CD-ROM, and so on) to the computer, in what is called a “daisy chain” arrangement. Only the first SCSI device in a daisy chain is connected to the computer; each of the other devices is connected to another SCSI device.



SCSI Cables

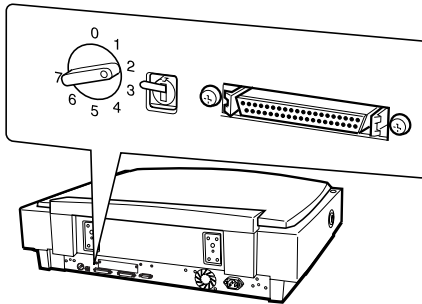
You may need to purchase SCSI cables before setting up your SCSI daisy chain. Be sure the SCSI cable connectors are suitable for your hardware, depending on the maker of your SCSI device and SCSI interface board.

SCSI ID and terminator

Each device has a SCSI ID number: the computer is usually set to number 7, and each of the other devices must have a different number between 0 and 6. Also, the first device and the last device in the chain (not including the computer) must have a terminator. No other device can have a terminator, or if a terminator does exist, it must be turned off or removed.

Setting the SCSI ID number

The scanner's default SCSI ID number is 2.



The SCSI ID rotary switch is located at the rear of the scanner.

2

If you add the scanner to a system in which one of your SCSI devices already has a SCSI ID of 2, change the ID number to an unused number using the rotary switch. See the table below as a guide.

ID	Availability	Description
0	Not recommended	Usually used for hard disk
1	Not recommended	Usually used for hard disk
2		Factory setting of the scanner
3		
4		
5		
6		
7	May not be available	Usually used for the SCSI board



Caution:

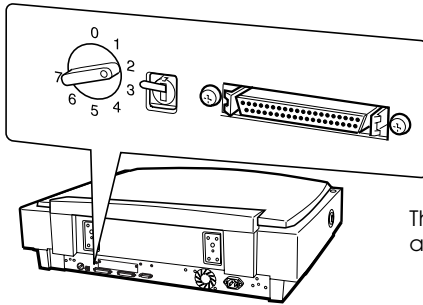
Do not set the SCSI ID to an ID number that is already assigned to another device; otherwise the computer, scanner, and other devices will not operate properly.

Setting the terminator switch

The scanner has a built-in terminator, which allows SCSI devices to communicate properly with each other. You may need to change the terminator switch setting according to your computer system.

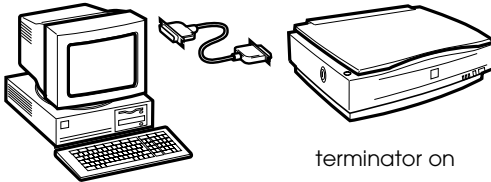
Note:

Do not use an external terminator.

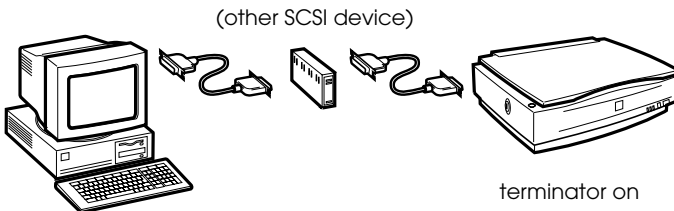


The terminator switch is located at the rear of the scanner.

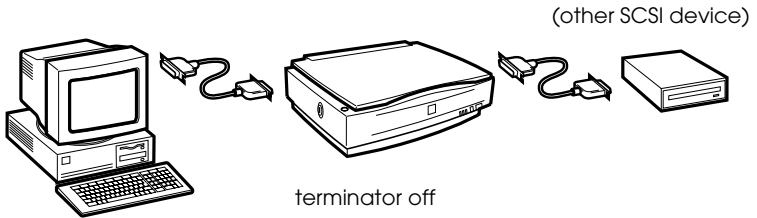
Only the scanner is connected



The scanner is the last device in the daisy chain



The scanner is in the middle of the daisy chain



2

Connecting the scanner

Connect the scanner to your PC or to another SCSI device as follows:

Note:

The combination of connectors on the SCSI interface cable you need varies depending on the maker of your SCSI device and SCSI interface board.

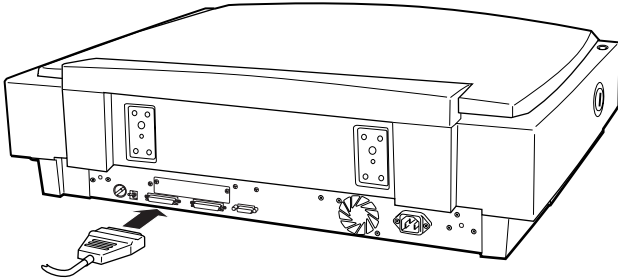
1. Make sure the scanner, computer, and all other SCSI devices are turned off and unplugged from the power source.



Caution:

Do not connect the scanner to the PC or other devices while they are turned on as damage may occur.

2. Connect one end of the interface cable to one of the scanner SCSI connectors until the locks on both sides snap in.



Note:

- To connect the scanner to a PC or any other SCSI devices, the total length of cable in the daisy chain must not exceed 3 meters; otherwise the system may not work properly.
 - Make sure no other interface is used.
3. Connect the other end of the cable to the SCSI port of your PC or another SCSI device.
 4. Plug in the power cords of your PC, scanner, and other external SCSI devices.

Note:

Before turning on your system, be sure to read "Power-on sequence" following.

Power-on sequence

Keep the following in mind every time you turn on your computer and SCSI devices, including the scanner.

- ❑ Be sure to turn on the SCSI device which is connected at the farthest end of the daisy chain first, then the second farthest and so on, until finally your computer. If you attempt to use a SCSI device which has been turned on after the computer, it may not work properly, or the computer may not work properly.

- ❑ **For Windows 95, 98, or 2000 users:**
The first time you turn on the computer after turning on the scanner, one of the following dialog boxes or similar may appear.



Windows 95



Windows 98



Windows 2000

If you see one of these, follow the installation instructions in Chapter 3, then see “Power-off sequence” following.

Power-off sequence

Keep the following in mind every time you turn off your computer and SCSI devices.

- ❑ When you are finished using your system, turn off your computer first, then the scanner and other SCSI devices in reverse order of the power-on sequence.
- ❑ While using your computer, do not turn off any SCSI device which has a terminator that is active (on).
- ❑ Do not turn the scanner off and back on while using your computer, otherwise the scanner may not work properly.

When the connection is complete, you need to install the scanner software. See Chapter 3 of this guide.

Chapter 3

Installing the Software

System Requirements	3-2
Installing the Scanner Software.....	3-3
For Windows 98 and 2000 users.....	3-3
For Windows 95 and NT 4.0 users.....	3-10
Calibrating Your Screen	3-16
Selecting Scanners	3-17
For Windows 98 and 2000 users.....	3-18
For Windows 95 and NT4.0 users	3-20

System Requirements

Before installing the scanner software, make sure that your system meets the following requirements.

Scanner: EPSON GT-10000+

System: Microsoft® Windows® 95, Windows® 98, Windows NT® 4.0, or Windows® 2000

Interface: Adaptec® SCSI adapter

Display: Color monitor, 800 × 600 screen resolution (or higher recommended), and 65,000 colors (or higher recommended)

Note:

Color and tone reproduction are subject to the display capability of your computer system, including the video card, display monitor, and software. See the product documentation for details.

Installing the Scanner Software

After connecting the scanner to your PC, install the scanner software (EPSON TWAIN Pro) from the CD-ROM. The installation steps differ depending on the version of Windows.

For Windows 98 and 2000 users, see the instructions in the section below on this page. For Windows 95 and NT 4.0 users, see “For Windows 95 and NT 4.0 users” on page 3-10.

3

For Windows 98 and 2000 users

Note:

- ❑ *If the scanner software is already installed and you are upgrading your system to Windows 98 or 2000, be sure to uninstall it before the upgrade, and then re-install it using the same steps described in this section. For more information, see “Maintenance and Troubleshooting” in your Online Reference Guide.*
 - ❑ *Screen displays of Windows 98 are used to represent all versions of Windows unless difference in operating procedure arise, in such cases the specific Windows version such as “Windows 98” or “Windows 2000” is identified.*
 - ❑ *To install the scanner software in Windows 2000, you need to log on to Windows as an Administrator.*
1. Make sure that the scanner is turned on.
 2. Turn on the PC, and start Windows.

3. When a dialog box similar to the one shown below appears, insert the scanner software CD in the CD-ROM drive, then click Next.



4. Select the Search for the best driver for your device option (for Windows 98) or the Search for a suitable driver for my device option (for Windows 2000), then click Next.



5. Make sure only the Specify a location check box is selected, then proceed to step 6 (for Windows 98 users) or click Next (for Windows 2000 users) before proceeding to step 6.

6. Browse and select or type in the CD-ROM drive letter, the EPSON folder, the folder of your preferred language, and the Win98 or Win2000 folder as the location, as shown below. Finally, click Next (OK).



Windows 98



Windows 2000

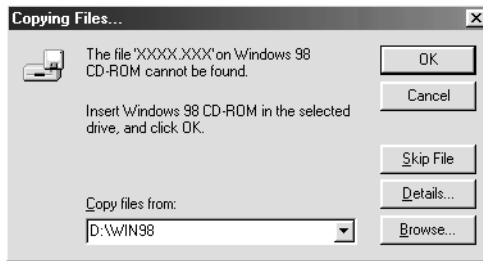
7. Follow the instructions on the screen.

For Windows 98 users:

You may be asked to insert the Windows 98 CD-ROM.



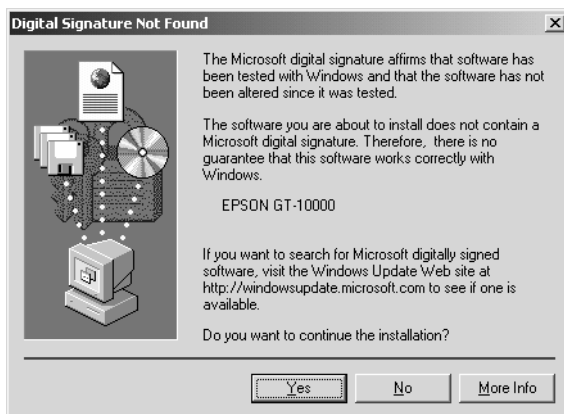
Replace the scanner software CD with the Windows 98 CD-ROM. Make sure that the correct CD-ROM drive letter and the Win98 folder are specified in the Copy files from: box as shown below.



After installing the appropriate files, remove the Windows 98 CD-ROM and replace the scanner software CD.

For Windows 2000 users:

When the following dialog box appears, click Yes to continue.



Note:

If you click NO and stop installation, your scanner will appear under Other Devices with a ? mark in the Device Manager menu. You must reinstall EPSON TWAIN Pro. Follow the instructions on "Maintenance and Troubleshooting" in your Online Reference Guide.

8. The EPSON Screen Calibration utility automatically starts. Follow the instructions on the screen. For details, see "Calibrating Your Screen" on page 3-16.

Note:

If the EPSON Screen Calibration utility does not start automatically, see your Online Reference Guide to calibrate your screen after installing the scanner software.

9. When a dialog box similar to the one shown below appears, click Finish.



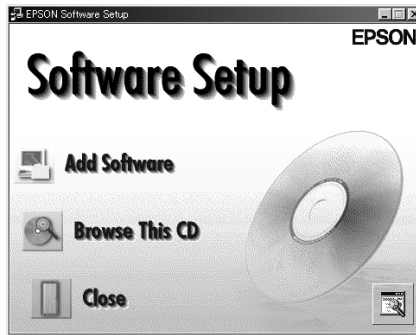
Note:

If necessary, restart your PC.

This completes the EPSON TWAIN Pro installation. You can now continue and install the utility and applications from the scanner software CD.

10. Double-click the My Computer icon.
11. Double-click the CD-ROM drive icon. A dialog box asking for your preferred language appears. If no dialog box appears, double-click the Cdsetup.exe icon.
12. Select your preferred language and click OK.

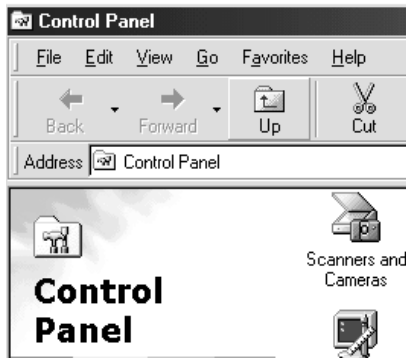
13. When the following dialog box appears, click Add Software.



14. From the list of applications, select those you want to install. Make sure PageManager for EPSON is selected for installation.
15. Click OK, then follow the instructions on the screen. The setup program installs the selected applications.

Note:

- If you see README files in the application folders on the CD-ROM, be sure to read them as they contain up-to-date information on the applications.*
- The Scanners and Cameras icon appears in the Control Panel as shown below, after EPSON TWAIN Pro is installed.*



For Windows 95 and NT 4.0 users

Note:

To install the scanner software in Windows NT 4.0, you need to log on to Windows as an Administrator.

1. Make sure that the scanner is turned on.
2. Turn on the PC, and start Windows.

If you are using Windows NT 4.0, insert the scanner software CD in the CD-ROM drive, then go to step 3.

For Windows 95, either of the following dialog boxes appears.

- If the following dialog box appears, insert the scanner software CD in the CD-ROM drive, then click Next.



When prompted for the drive and folder, select the CD-ROM drive, the EPSON folder, the folder of your language preference, and the Win95 folder. An example is shown below.



When a dialog box similar to the one shown below appears, click Finish and go to step 3.

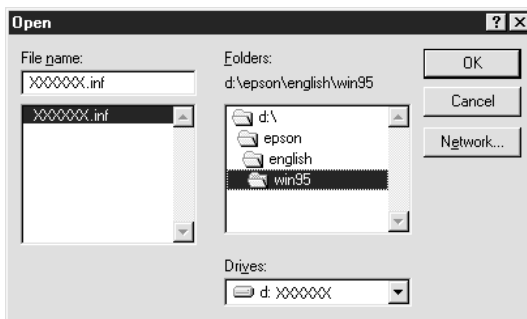


- ❑ If the following dialog box appears, insert the scanner software CD in the CD-ROM drive.

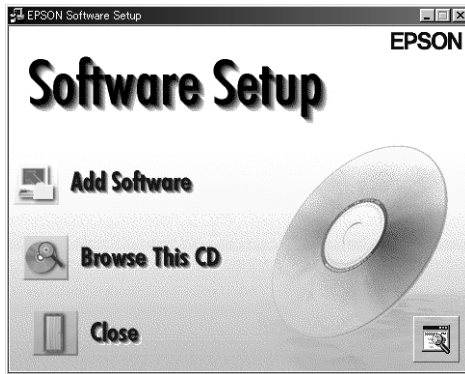


Select Driver from disk provided by hardware manufacturer. Click OK then Browse.

Select the CD-ROM drive, the EPSON folder, the folder of your preferred language, and the Win95 folder. Finally click OK and go to step 3.



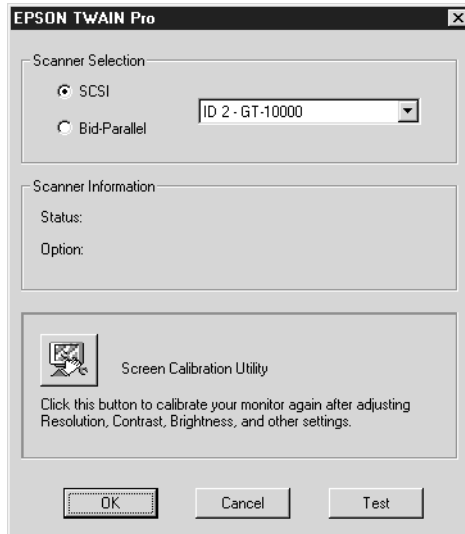
3. Double-click the My Computer icon.
4. Double-click the CD-ROM drive icon. A dialog box asking for your preferred language appears. If no dialog box appears, double-click the Cdsetup.exe icon.
5. Select your preferred language and click OK.
6. When the following dialog box appears, click Add Software.



7. From the list of applications, select those you want to install. Make sure EPSON TWAIN Pro and PageManager for EPSON are selected for installation.
8. Click OK. Then follow the instructions on the screen.

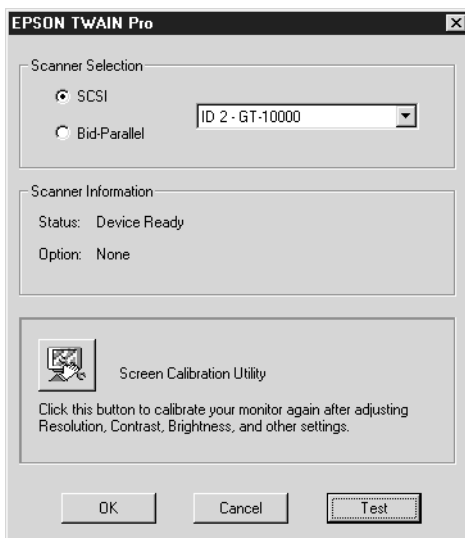
The setup program installs EPSON TWAIN Pro, EPSON Scanner Monitor and PageManager for EPSON.

9. After EPSON TWAIN Pro is installed, the EPSON TWAIN Pro setup dialog box appears.



10. Make sure that SCSI is selected and your EPSON scanner appears in the Scanner Selection list. If not, see "Maintenance and Troubleshooting" in your *Online Reference Guide*.

11. Click **Test** to check the connection. If everything is properly installed and connected, **Status: Device Ready** appears under **Scanner Information** in the dialog box.



If the “Device Ready” message does not appear, see “Maintenance and Troubleshooting” in your *Online Reference Guide*.

12. Click **OK** to close the EPSON TWAIN Pro dialog box.

The EPSON Screen Calibration utility automatically starts. Go to “Calibrating Your Screen” on page 3-16.

Calibrating Your Screen

You must calibrate your screen and the scanner to reproduce images identical to the originals.

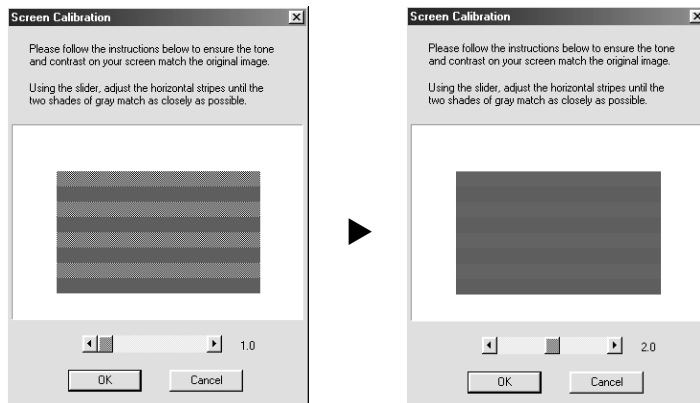
Note for Windows 98 and 2000 users:

There is no introductory Screen Calibration dialog for Windows 98 and 2000. Start from step 2 below to calibrate your screen.

During the EPSON scanner software installation, the following dialog box appears.



1. Click Next.
2. In a dialog box similar to the one shown below, move the slider to the right or left until the two shades of the gray horizontal stripes match.

**Note:**

View the screen from a short distance. While the gray stripes do not blend perfectly well, try to adjust until the different tones match as closely as possible.

3. Click OK to register the calibration setting.
4. When the message Setup is complete appears, click OK.

Screen calibration is not required any more until you change to a different monitor.

Selecting Scanners

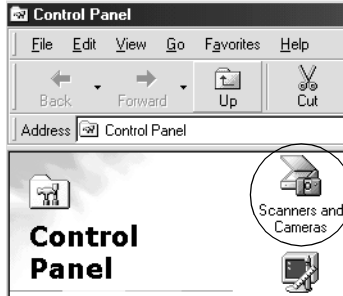
If several EPSON TWAIN Pro-compliant scanners are connected to your PC, follow the instructions below to select one of them to use.

Note:

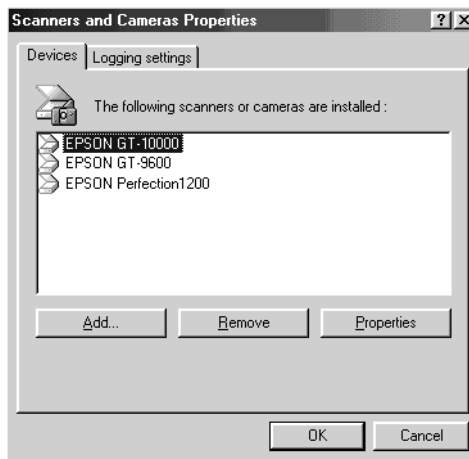
You can only connect and use scanners that are of the same model if you use different interface connections.

For Windows 98 and 2000 users

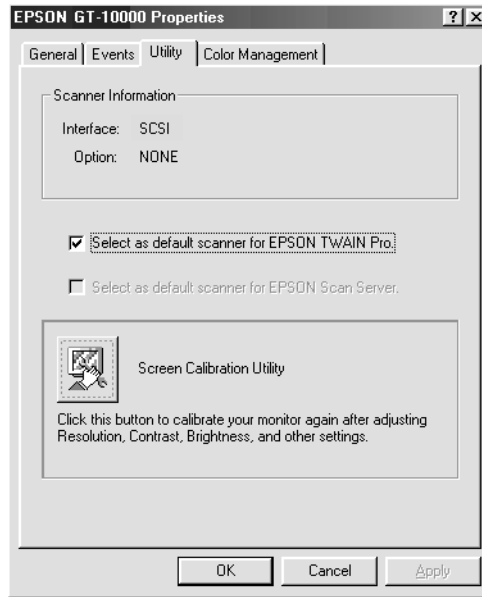
1. Double-click the Scanners and Cameras icon in Control Panel.



2. Select a scanner you want to use from the scanners and cameras list in the Scanners and Cameras Properties dialog box. Click Properties, and then click the Utility tab.



3. Make sure Select as default scanner for EPSON TWAIN Pro is selected and then click OK.

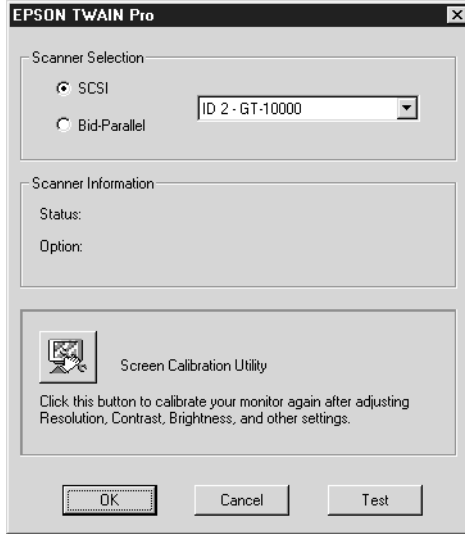


Note:

If you have installed EPSON Scan Server, you can set up your scanner to be used on the network by selecting the Select as default scanner for EPSON Scan Server check box.

For Windows 95 and NT4.0 users

1. Double-click the EPSON TWAIN Pro icon in Control Panel. The EPSON TWAIN Pro setup dialog box appears.



2. Open the Scanner Selection list box and select the scanner you want to use. Then click OK.

Chapter 4

Using Your Scanner

Scanning Procedure	4-2
Placing a Document on the Scanner	4-2
Removing the Cover for Thick or Large Documents	4-5
Starting EPSON TWAIN Pro	4-6
Scanning an Image	4-8
Saving the Scanned Image	4-21
Scanning by Pressing the Start Button	4-22



Scanning Procedure

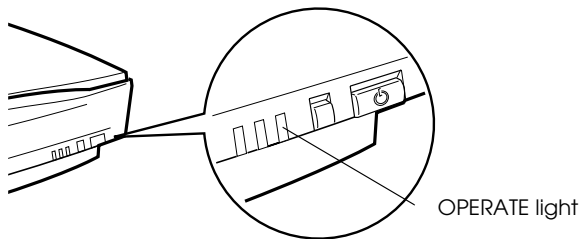
This chapter shows you how the scanner operates. The basic procedure for scanning is as follows:

1. Turn on the scanner. (Keep in mind the “Power-on sequence” on page 2-13.)
2. Place the document you want to scan on the document table. (This is described in detail in the next section.)
3. Run the scanner software and scan. (See “Starting EPSON TWAIN Pro” on page 4-6 for details on scanning.)

Placing a Document on the Scanner

Before scanning a document, remember to respect the rights of copyright owners. Do not scan published text or images without first checking the copyright status.

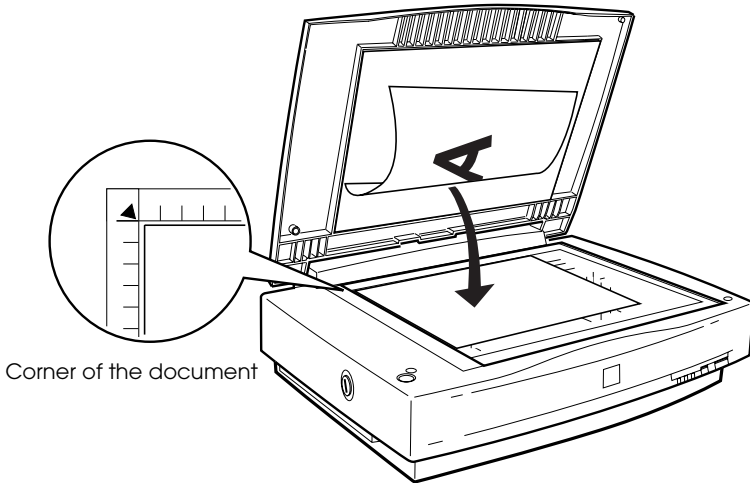
1. Turn on the scanner by pressing the OPERATE button. The OPERATE light comes on.



2. Turn on the PC and make sure that the scanner's READY light is on.
3. Open the document cover.

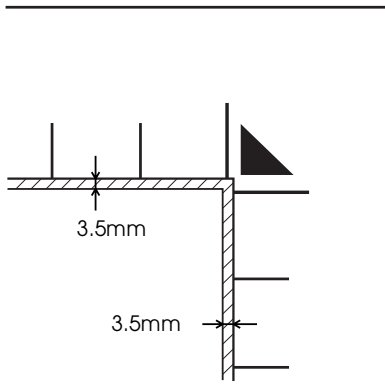
- Place the document on the document table, with the side to be scanned facing down. Make sure that the document is carefully aligned with the document guides.

Use the document guide strip to align horizontal edge of the document.

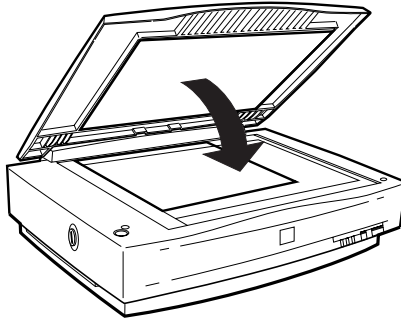


Note:

The area with a width of 3.5mm from both horizontal and vertical rulers is not scanned.



5. Close the document cover gently so that the document does not move.

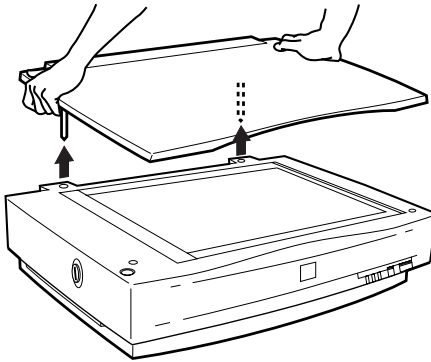


Note:

- ❑ *Make sure the document is flat against the glass surface, otherwise the image will appear fuzzy and out of focus. Also be sure to close the document cover to prevent interference from external light.*
 - ❑ *Always keep the document table clean. See “Maintenance and Troubleshooting” in your Online Reference Guide.*
 - ❑ *Do not leave photographs on the document table for an extended period of time as they may stick to the glass.*
 - ❑ *Do not place heavy objects on top of the scanner.*
6. Start your scanner software, and follow scanning instructions described later in this chapter or your *Online Reference Guide*.

Removing the Cover for Thick or Large Documents

For thick documents or other materials, you can remove the document cover. To do this, hold the back of the document cover behind the hinge and lift straight up.



Hold the back of the document cover and lift straight up.

Note:

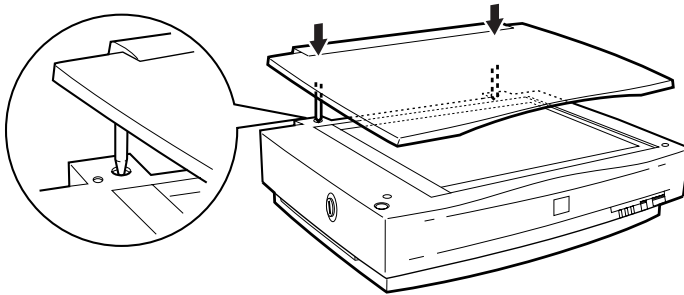
When scanning with the cover removed, do not leave any area of the document table exposed to prevent interference from external light.



Caution:

Do not force the cover off the scanner or lift the cover from in front of the cover hinge. Doing so can cause damage to the cover.


When you are finished scanning, reattach the document cover by pushing straight down on the back until it clicks into place.



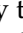

Caution:

Make sure both of the cover's notches are directly above the clips on the scanner before pushing it down into place; otherwise damage may occur.

Starting EPSON TWAIN Pro

There are two ways to scan; with an application that supports TWAIN, or with the  Start button and preassigned application software.

If you ..

- ❑ use an application that supports EPSON TWAIN Pro to scan, open your application (see “Starting EPSON TWAIN Pro through your application software” below).
- ❑ want to scan an image directly to your application without opening EPSON TWAIN Pro or the TWAIN-compliant application every time, set up the  Start button and the application to work with (see Chapter 5, “Using the Start Button”). Then simply press the  Start button.

Note:

- ❑ *Even if your application supports TWAIN, some features of EPSON TWAIN Pro may not be available depending on the application software.*
- ❑ *Windows 2000 or NT 4.0 users who use the NTFS file system and do not have Administrator privileges need to have permission to modify the following folders and subfolders:*

EPSON TWAIN Pro Users:

C:\WINNT\TWAIN_32\EPFBPRO

EPSON TWAIN Pro Network Users:

C:\WINNT\TWAIN_32\EPFBPRON

Starting EPSON TWAIN Pro through your application software

Application programs that support the scanning interface standard TWAIN, allow you to scan images while an application is running. To verify whether your application is compatible with TWAIN, see your application documentation.

How you should open EPSON TWAIN Pro and scan varies depending on the application. Read the following to find out how to access EPSON TWAIN Pro.

1. Start your application. For example, Presto! PageManager for EPSON.
2. Select Select Source from the File menu, and then select EPSON TWAIN Pro.

Note:

You usually need to perform this step only the first time you use the scanner with your application.

3. Choose Acquire from the File menu to open EPSON TWAIN Pro.

To scan, see the next section.

Scanning an Image

When you start EPSON TWAIN Pro or EPSON TWAIN Pro Network through a TWAIN-compliant application, the following window or similar appears on the screen:



The following gives an overview of EPSON TWAIN Pro and EPSON TWAIN Pro Network.

Note:

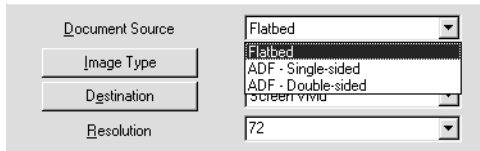
- ❑ *Some settings may appear dimmed and cannot be selected because of your choice of settings.*
- ❑ *You cannot scan an image which exceeds the available memory or disk space. If you try to scan a very large image, an alert appears on the screen.*
- ❑ *Before scanning, be sure to calibrate your screen. For details, see your Online Reference Guide.*
- ❑ *After an image is scanned, be sure to save it.*

Document Source

When using the document table of the scanner, leave the Document Source set to Flatbed. Other selections are available depending on what is installed.

Note:

Uninstalled options are not displayed.



Select any of the following settings from the Document Source list:

Flatbed:

Select this setting when you use the scanner document table.

ADF - Single-sided:

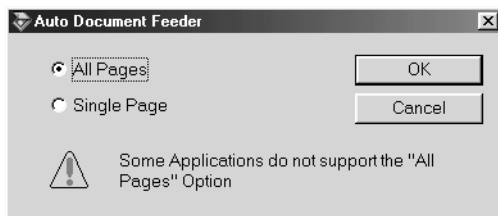
Select this setting to scan single-sided documents on the optional Automatic Document Feeder. This setting is available only when the optional Automatic Document Feeder has been installed.

ADF - Double-sided:

Select this setting to scan double-sided documents on the optional Automatic Document Feeder. This setting is available only when the optional Automatic Document Feeder has been installed.

Multi-page support with Automatic Document Feeder

If you select ADF-Single-sided or ADF-Double-sided as the Document Source and click the Scan button, the following dialog box appears.

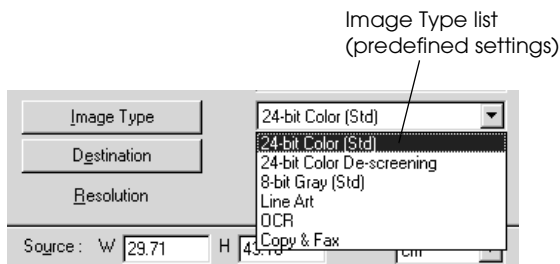


If you select Single Page, only one page is fed from the Automatic Document Feeder and scanned.

If you select All Pages (default), all the pages are fed from the Automatic Document Feeder and are scanned. Depending on your application, the All Pages option may not work correctly.

Image Type

Use the Image Type list to select the type of image to be scanned.



The Image Type list provides the following predefined settings. Click the arrows on the right to view all of the available settings:

24-bit Color (Std):

24-bit colors, high quality

24-bit Color De-screening:

24-bit colors, high quality, and de-screening

8-bit Gray (Std):

256 grays, high quality

Line Art:

Black-and-white, draft quality and fast

OCR:

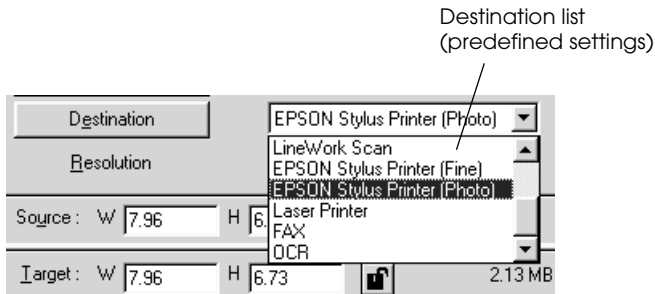
Black-and-white, high quality, and Text Enhancement Technology

Copy & Fax:

Black-and-white, draft quality and fast, and Auto Area Segmentation

Destination

Select the destination, or output device, where the scanned image is to be printed or displayed using the Destination list.



The Destination list provides the following predefined settings.

Screen/Web:

Suitable to display on screen

Prepress (175, 150, 133, 120 lpi):

Optimize for prepress printing at 175, 150, 133, or 120 lines per inch.

LineWork Scan:

Optimize for LineWork scanning.

EPSON Stylus Printer (Fine or Photo):

If you are using an EPSON Stylus printer and are printing scanned images with the Economy, Normal, or Fine Print Quality settings in your printer software, selecting EPSON Stylus Printer (Fine) is recommended. If you are printing with the SuperFine or Photo Print Quality settings, select EPSON Stylus Printer (Photo).

Laser Printer:

Optimize for printing on a laser printer

Fax:

Suitable for facsimile transmission

OCR:

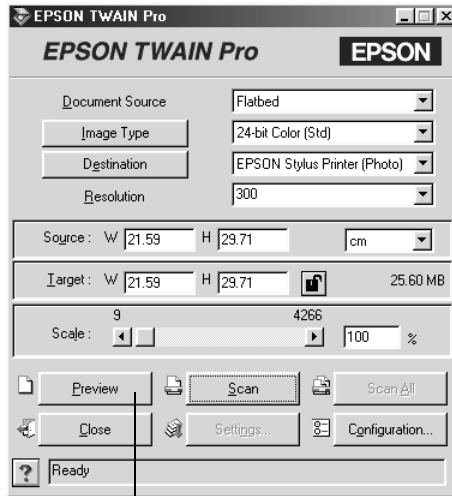
For optical character recognition scanning

Note:

- The effects of the Destination settings cannot be viewed in the Preview window.*
- The Online Reference Guide provides you with more information on settings and functions.*
- Online help also provides you with information on settings. Click the ? button to access the online help.*
- You cannot scan an image which exceeds available memory or disk space. If you try to scan a very large image, an alert appears on the screen.*
- Before scanning, be sure to calibrate your screen. For details, see your Online Reference Guide.*
- After an image is scanned, be sure to save it.*

Previewing images

To preview an image, click Preview on the EPSON TWAIN Pro window.

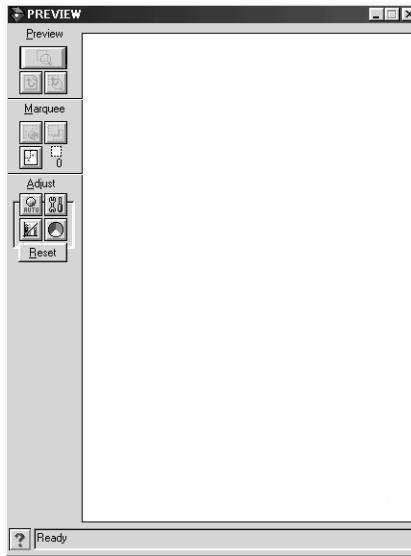


Preview button

Note:

You cannot preview an image which exceeds available memory or disk space. If you try to preview a very large image, an alert appears on the screen.

The following window appears.



You can see the effects of the following settings in the preview image.

- Pixel Depth, Halftone, and Dropout in the Image Type dialog box
- Unsharp Mask in the Destination dialog box
- Exposure, Gamma, Highlight, Shadow, and Threshold in the Image Controls dialog box
- Tone Correction in the Tone Correction dialog box
- Gray Balance Intensity and Saturation in the Color Adjustment dialog box
- Auto Exposure

Note:

Although the image in the Preview window changes as you make settings, the settings do not affect the actual image until you scan or rescan the image.

Preview Buttons

Zoom Preview button



Clicking the Zoom Preview button enlarges the active marquee. See the next page for information about marquees.

Return to Full Preview button



Clicking the Return to Full Preview button restores the image to a full preview. This button is available only when the marquee is zoomed as described above.

Return to Zoom Preview button



Clicking the Return to Zoom Preview button restores the image to the previous zoom. This button is available only when a marquee has been previously zoomed. This restores the zoom preview from memory, which is quicker than rescanning the same zoom by clicking the ZOOM Preview button again.

Marquees

A marquee is a frame around an entire image, or just a certain part of an image. Marquees are often used in scanning and image-editing software to select only the most important part of an image.

Making and modifying marquees

Move the pointer over the image in the Preview window, and the pointer becomes cross-hairs. Drag (move the mouse while holding down the mouse button) the cross-hairs over any area of the image, and a frame appears. The point where you first clicked is anchored, but the rest of the frame is sizable and movable. After you finish creating a marquee, you can resize and move it as described below.

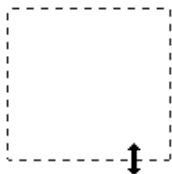
Multiple marquees

You can make multiple marquees in one image to scan the most important parts while ignoring the rest. Marquees can be different sizes, and they can overlap. Extra marquees can be made anywhere except on the frame of another marquee. You can begin a marquee anywhere the pointer appears as cross-hairs. To distinguish the active marquee from other marquees, look at the marquee frames. The active marquee has an animated dashed frame as shown below.



Resizing marquees

When the mouse pointer is placed on the edge of the active marquee (the frame of the selected image area), it changes to a double-headed arrow. You can resize the marquee by dragging the arrow.



If you drag an arrow while pressing the Shift key, the marquee will be resized proportionally.

Moving marquees

When the mouse pointer is placed within the active marquee (the frame of the selected image area), it changes to a hand icon. You can drag the marquee anywhere in the Preview window.



If you drag a hand while pressing the Shift key, the marquee will be limited to vertical or horizontal movement.

Note:

If you want to create a marquee inside the active marquee, first make a marquee outside the active marquee. The newly created marquee becomes the active marquee and you can move it into the other marquee.

Delete Marquee button



Clicking the Delete Marquee button removes the active marquee.

Note:

You can also delete the active marquee by pressing the Delete key on your keyboard.

Duplicate Marquee button



Clicking the Duplicate Marquee button creates another marquee the same size as the active marquee. Use this button to make multiple marquees.

Clicking the Duplicate Marquee button while holding down the keys noted in the table below causes the active marquee to be duplicated in a specific direction.

Horizontal	Vertical
Ctrl key	Alt key

Marquee number indicator



This shows the number of marquees in the Preview window. To create more marquees, see “Duplicate marquee button” above.

Scan

Clicking the **SCAN** button scans the image or active marquee in the Preview window. The scanned image is transferred to the application software you used to open EPSON TWAIN Pro so that you can work with the image from within that application.

While scanning, a progress indicator appears. If necessary, click the **CANCEL** button to cancel the operation.

Note:

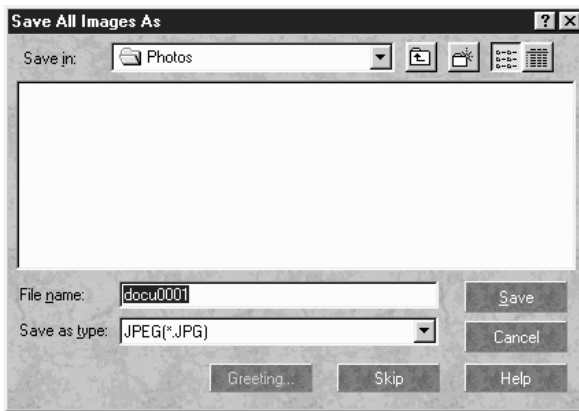
- You cannot scan an image which exceeds the available memory or disk space. If you try to scan a very large image, an alert appears on the screen.*
- Before you begin scanning, be sure to calibrate your display monitor. For details, see "Calibrating Your Screen" on page 3-16.*
- After an image is scanned, be sure to save it.*

Scan All

Clicking the **SCAN All** button scans all of the marquees as separate images, one at a time. This button is available only when there are multiple marquees.


Saving the Scanned Image

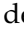
- ❑ To save a scanned image in your application, choose **Save** or **Save As** from the **File** menu. For details, see your application documentation.
- ❑ To save a scanned image in PageManager for EPSON, follow the steps below.
 1. Choose **Save As** from the **File** menu. The following dialog box appears on the screen.



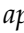
2. Select the folder where the image will be saved.
3. Type a filename for your image in the File Name field.
4. Select the file format you want to save the image in from the Save as type field.
5. Click **Save**.

Scanning by Pressing the Start Button

You can open EPSON TWAIN Pro, start scanning, and have the scanned image sent to a certain application, simply by pressing the  Start button on your scanner. To use this feature, you need to install PageManager for EPSON, or other Start button compatible software. The following occurs:

- ❑ Windows 98 and 2000, or EPSON Scanner Monitor software on an operating system other than Windows 98 and 2000, detects when the  Start button is pressed and sends information to the Start button compatible application, such as PageManager for EPSON.
- ❑ The Start button compatible application will automatically open EPSON TWAIN Pro, scan the image and process it in the way the application is designed.

Note:

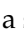
- ❑ *You need to set up the Start button compatible software before using this feature. See Chapter 5 and the documentation that comes with the application.*
- ❑ *The scanned image will be handled by the software to its maximum capability. For example, using PageManager for EPSON, you can send the scanned image to a printer to print, or convert your scanned OCR image to text format and paste it in a word processing application—all by simply pressing the  Start button.*
- ❑ *If the scanner is connected to a PC which is running EPSON Scan Server, the Start Button feature mentioned above is disabled. For information on using the Start button in a networked environment, refer to the EPSON Scan Server & EPSON TWAIN Pro Network User's Guide.*

Chapter 5

Using the Start Button

The Start Button Feature.....	5-2
PageManager for EPSON.....	5-3
Target applications in the Scan Buttons bar.....	5-3
Assigning an application to the Start button.....	5-4
Adding applications to the Scan Buttons bar.....	5-6
Registering new applications.....	5-7
Setting up EPSON Scanner Monitor.....	5-9
Setting up the Start Button Feature for Windows 98 and 2000.....	5-11


The Start Button Feature

The Start Button feature allows you to scan and send data to a target application with a single push of your scanner's  Start button. The following sections will help you set up your PageManager for EPSON and EPSON Scanner Monitor software, or Windows 98 and 2000 system, so you can begin to use the Start Button feature.

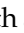
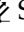
Note for Windows 98 and 2000 users:

The Start Button feature is supported by Windows 98 and 2000, the EPSON Scanner Monitor software will not be installed onto Windows 98 and 2000. See "Setting up the Start Button Feature for Windows 98 and 2000" on page 5-11 for instructions on setting up the Start Button feature.

Note:

If the scanner is connected to a PC which is running EPSON Scan Server, the Start Button feature mentioned above is disabled. For information on using the  Start button in a networked environment, refer to the EPSON Scan Server & EPSON TWAIN Pro Network User's Guide.

PageManager for EPSON


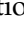
PageManager allows you to scan and send data directly to an assigned application with a single push of your scanner's  Start button. You can also scan to any target application by simply clicking on the application icon in PageManager's Scan Buttons bar. This section will help you set up PageManager so you can begin to scan using the  Start button. For more detailed information on PageManager settings, see your PageManager documentation.

Note:

For information on PageManager installation, see Chapter 3.

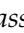
Target applications in the Scan Buttons bar

When PageManager is started, the Scan Buttons bar will appear on your screen. The icons in this bar represent target applications or peripheral devices, such as a printer, that can be accessed by your scanner. This means that you can scan and send data directly to these applications or devices by clicking on their icons.

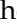
PageManager for EPSON also allows you to assign any one of the applications or devices on the Scan Buttons bar to the  Start button. This means that an image can be scanned and sent straight to your selected application with one simple push of the  Start button.



Note:

The application currently assigned to the  Start button has the Start button icon added to its application icon.

Assigning an application to the Start button

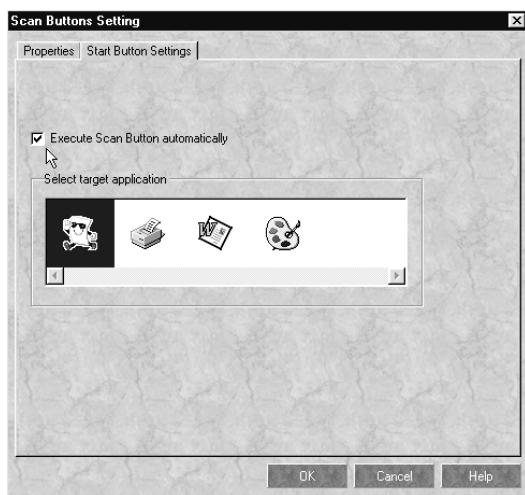
To assign an application on the Scan Buttons bar to the  Start button, follow the steps below.

1. Select the Scan Buttons Setting from the File menu.




2. Click the Start Button Settings tab in the Scan Buttons Setting dialog box. The following dialog box appears.

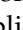
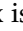
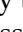
The icons in Select target application correspond to the icons in the Scan Buttons bar and represent the possible target devices and applications.



3. Select an application from the Select target application box and click OK.

The selected application is now assigned to the scanner's  Start button.

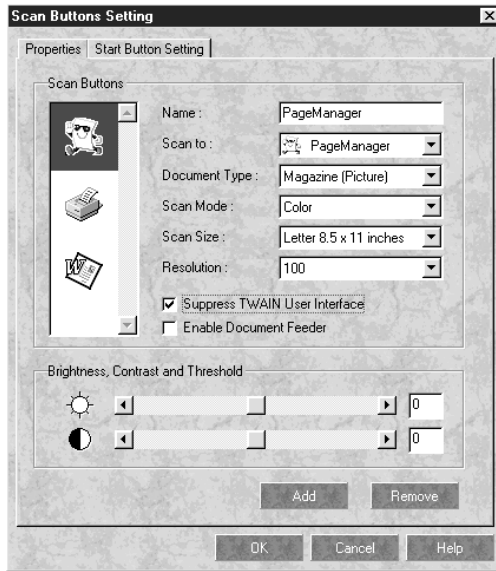
Execute Scan Button automatically check box

When this check box is selected, the assigned application will automatically open and the scanned image is sent to the application when you press the  Start button. When this check box is clear, no application is assigned to the  Start button and only the Scan Buttons bar will appear when the  Start button is pressed. Then you can select an application from the Scan Buttons bar.

Adding applications to the Scan Buttons bar

You can add applications appearing in the Application bar at the bottom of the PageManager window to the Scan Buttons bar. Follow the steps below.

1. Select Scan Buttons Setting from the File menu. You will see the following dialog box.



2. Specify the name of the setting in the Name box.
3. Click the arrow next to the Scan to box and select the application you want to add to the Scan Buttons bar.
4. Select the appropriate scanning settings (Document Type, Scan Mode, etc.) for the application from this dialog box and click Add. Then click OK.

The icon of the selected application appears on the Scan Buttons bar.

To remove an application assigned to the Scan Buttons bar, select the application in the box on the left of the Scan Buttons Setting dialog box and click Remove. Then click OK.

Suppress TWAIN User Interface check box

When this check box is selected, the EPSON TWAIN Pro dialog box does not appear when you scan, and the scanner works according to the settings in PageManager. When this check box is clear, the EPSON TWAIN Pro dialog box appears when you scan, and the scanner works according to the settings in EPSON TWAIN Pro.

Enable Document Feeder check box

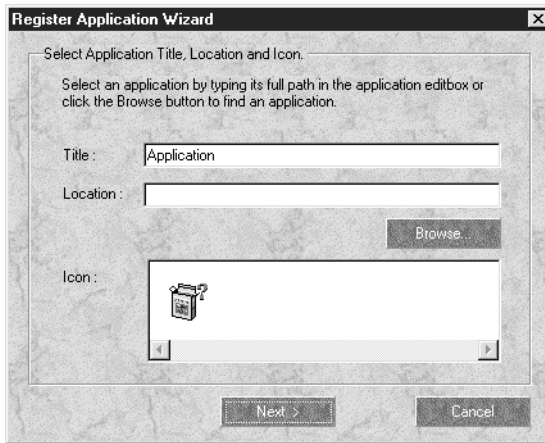
When this check box is selected, the scanner feeds your documents through the Automatic Document Feeder. When this check box is clear, the scanner scans your documents from the document table.

Registering new applications

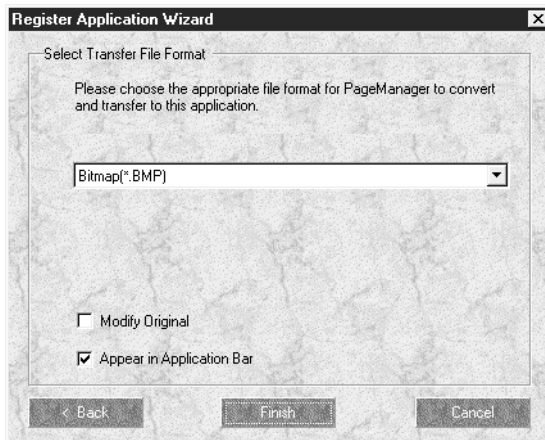
To add an application to the Scan Buttons bar, you need to register the application to the Application bar. The registered applications will appear in the Scan to: box in the Scan Buttons Setting dialog box.

1. Select Application Setting from File menu and then select Register New Application.

The Register Application Wizard dialog box appears.




2. Specify the application's name, location and icon and then click Next. The following dialog box appears.



3. Specify the format of the image and then click Finish.

Setting up EPSON Scanner Monitor

EPSON Scanner Monitor is software that recognizes when the  Start button is pressed and sends information to assigned application software supporting the Start Button feature and EPSON Scanner Monitor, such as PageManager for EPSON.

Once EPSON TWAIN Pro is installed on an operating system other than Windows 98 and 2000, EPSON Scanner Monitor is active and identifies PageManager for EPSON as the application that allows you to use the Start Button feature. If you need to turn off Scanner Monitor, or select another application that supports the Start Button feature, access Scanner Monitor as described below.

Note:

- Application software other than PageManager for EPSON which supports both EPSON Scanner Monitor and the Start button feature may be limited.*
- Windows 98 and 2000 support the Start Button feature; therefore, EPSON Scanner Monitor is not installed automatically when you install EPSON TWAIN Pro on Windows 98 or 2000.*

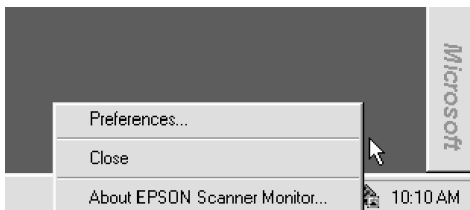
For Windows 95 or NT 4.0 users

Click the Scanner Monitor icon located in the task bar on your desktop.



❑ Turning off Scanner Monitor

If you want to turn off Scanner Monitor, select Close. However, this will disable the scanner's Start Button feature.



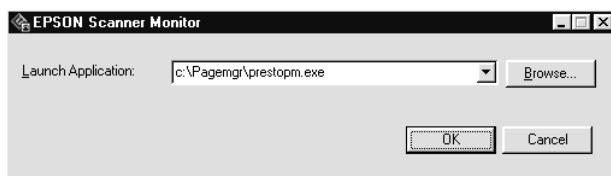
Note:

After you turn off Scanner Monitor, it will turn back on automatically the next time you start Windows.

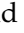

To activate Scanner Monitor again, select Programs from the Start menu and point to EPSON Scanner, then select EPSON Scanner Monitor. The Scanner Monitor icon appears in your taskbar.

❑ Assigning an application to Scanner Monitor

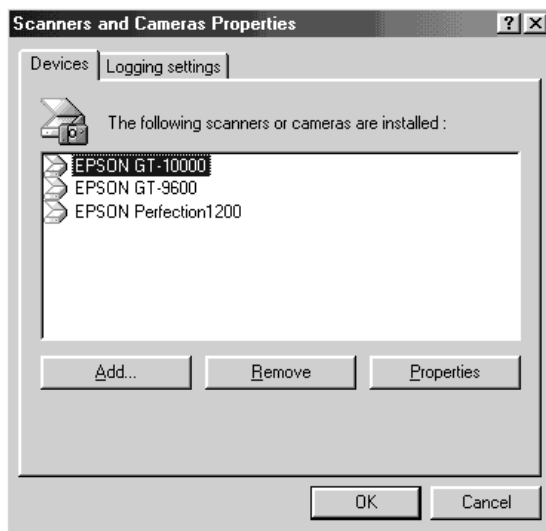
Select Preferences. The EPSON Scanner Monitor dialog box appears. You can select an application that supports the Start Button feature and EPSON Scanner Monitor, such as PageManager for EPSON.



Setting up the Start Button Feature for Windows 98 and 2000

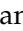
Without having EPSON Scanner Monitor installed, Windows 98 and 2000 allow you to use the  Start button on your scanner without having to open an application that supports the Start Button feature. When you press the  Start button, you can have a scanned image automatically sent to your application, such as PageManager for EPSON, as long as it is installed.

Once EPSON TWAIN Pro is installed on Windows 98 or 2000, the Scanners and Cameras icon appears on the Control Panel, and your scanner is listed in the Scanners and Cameras Properties dialog box similar to the one shown below.

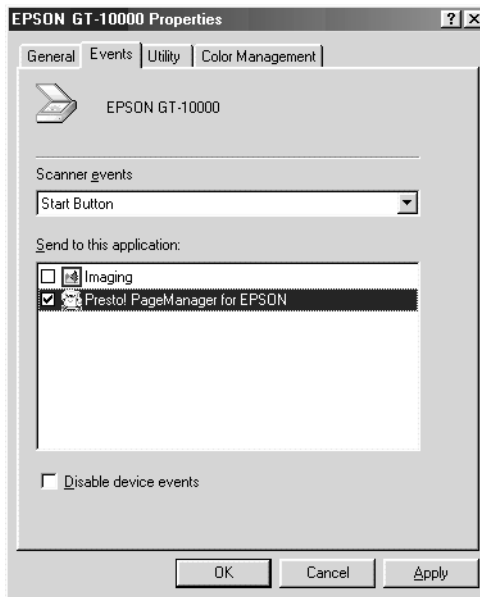


Assigning an application to the Start button

After you install applications that support “Scanner events”, such as PageManager for EPSON, you need to select one of those applications for the scanner event.

If you want to use your scanner’s  Start button with PageManager for EPSON as the supporting application, follow the steps below.

1. Double-click the Scanners and Cameras icon in Control Panel.
2. In the Scanners and Cameras Properties dialog box, select your scanner from the installed scanners and cameras list. Click Properties, and then select the Events tab.




3. See the Start Button is listed as the scanner event. In Send to this application list, select the check box of the desired application, but clear all the other application check boxes.

Note:

- If multiple applications are selected, a dialog box appears to prompt you to select just one from the list for the Start button.*
 - Some applications do not support linkage to scanners and digital cameras. Only applications in the Send to this application list support linkage.*
4. Close the dialog box by clicking OK.

Disabling the Start button

If you need to disable the Start Button feature, select the Disable device event check box in the EPSON GT-10000 Properties dialog box. When this check box is clear, Windows 98 and 2000 can detect if the  Start button is pressed and then launch the application you selected in the Send to this application list.

Options

Using the Automatic Document Feeder	6-2
Unpacking the Automatic Document Feeder	6-2
Installing the Automatic Document Feeder	6-3
Loading documents into your Automatic Document Feeder	6-7
Loading documents manually	6-8
Scanning from the Automatic Document Feeder	6-9
Changing orientation of scanned images	6-11
Fixing paper jams in the Automatic Document Feeder . . .	6-14
Document specifications	6-16
Using the IEEE 1394 Interface Board	6-17
Installing the IEEE 1394 interface board to your scanner	6-18
Understanding IEEE 1394 connections	6-20
Connecting to your computer	6-20
Installing the scanner software	6-22

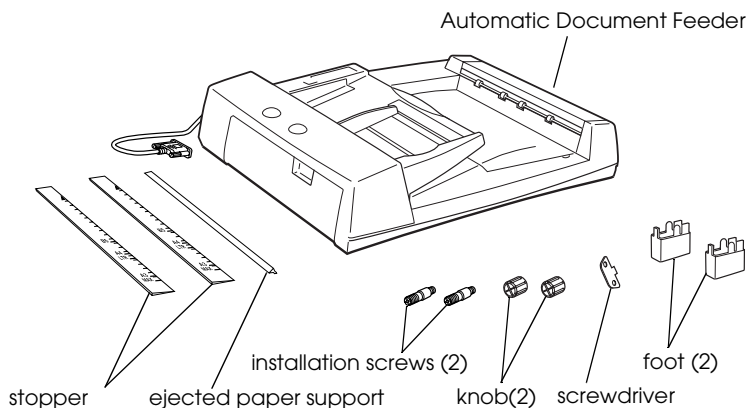


Using the Automatic Document Feeder

The Automatic Document Feeder (B81321*) allows you to automatically load multiple-page documents into your scanner. The document feeder is particularly useful for OCR (optical character recognition) scanning, or for creating an image database.

Unpacking the Automatic Document Feeder

When you unpack your Automatic Document Feeder, make sure the following parts are included and not damaged. If you find any missing or damaged items, contact your EPSON dealer immediately.



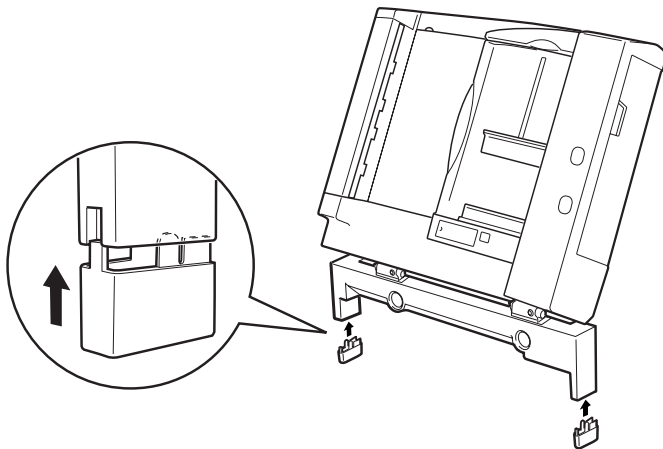
Installing the Automatic Document Feeder

Before installing the Automatic Document Feeder, be aware that:

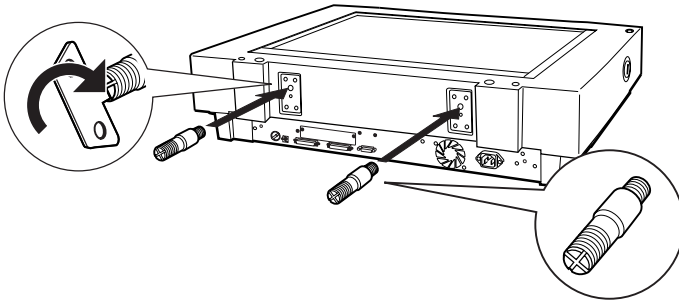
- ❑ The Automatic Document Feeder is heavy, so you may need to have someone help you lift it.
- ❑ The Automatic Document Feeder is large, so you should clear sufficient space around the scanner.

Follow the steps below to install the Automatic Document Feeder on your EPSON scanner.

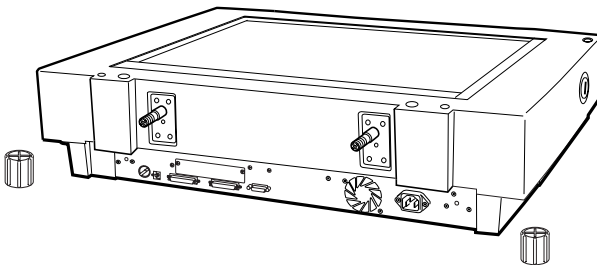
1. Make sure your scanner is turned off, and then unplug the scanner's power cord.
2. Remove the scanner's document cover by holding the cover behind the hinge and lifting the back of the cover straight up. (See "Removing the Cover for Thick or Large Documents" on page 4-5.)
3. Remove the document guide strip from the document table.
4. Attach the two feet as shown below.



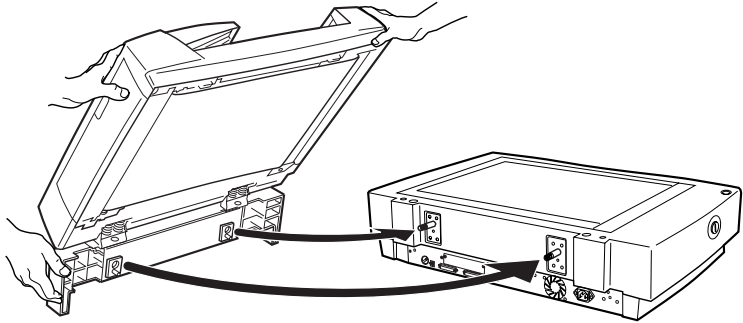
5. Insert the installation screws included with the Automatic Document Feeder into the holes in the back of the scanner and secure them using the included screwdriver as shown below.



6. Place the two knobs which are enclosed with the Automatic Document Feeder beside the scanner.



7. Align the installation screws with the holes of the Automatic Document Feeder. Slide the holes over the installation screws.

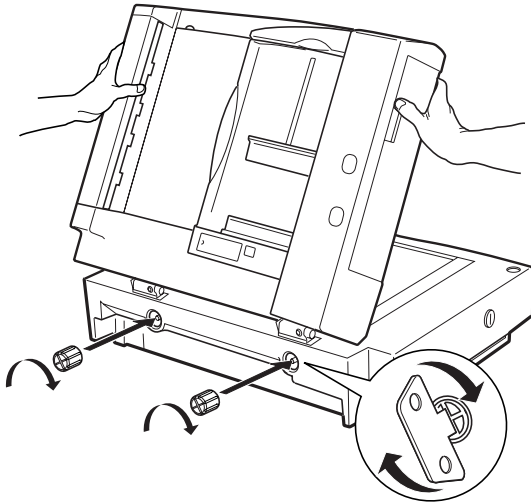


Warning:

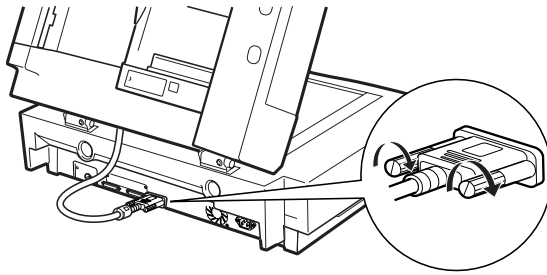
The Automatic Document Feeder is heavy. Ask for assistance when lifting it.

6

8. Secure the knobs to the ends of the installation screws using the screwdriver.



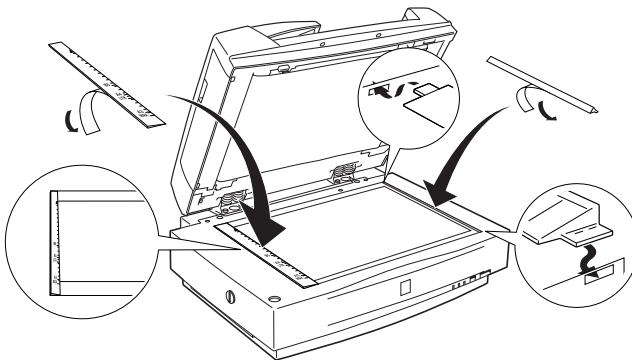
9. Attach the Automatic Document Feeder's connector to the scanner's option interface.



10. Peel off the backing from the dark gray stopper and from the ejected paper support, which are provided with the Automatic Document Feeder. Attach the stopper and ejected paper support to the scanner as shown below.

Note:

There are two stoppers included with the scanner, a light gray one and a dark gray one. The dark gray one is designed for use with your scanner. Do not use the light gray one.



11. Close the Automatic Document Feeder.
12. Connect the power cord to the scanner and then turn on the scanner.

Loading documents into your Automatic Document Feeder

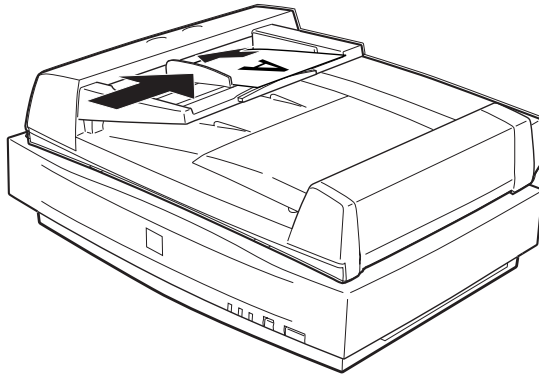
Note:

Make sure EPSON TWAIN Pro and PageManager for EPSON are installed.

The Automatic Document Feeder can automatically load up to 100 sheets. See “Document specifications” on page 6-16 for further information.

Follow the steps below to load documents into the Automatic Document Feeder.

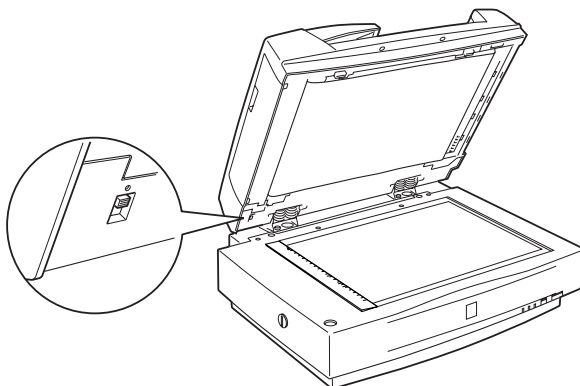
1. Slide the right edge guide all the way to the right.
2. Insert the document stack face up into the Automatic Document Feeder until it meets resistance. Then move the right edge guide so it is flush with the right edge of your document.



Note:

- Be sure to insert documents face up.*
- If you load multiple pages in the Automatic Document Feeder, the pages will be fed from the top and will be ejected face down.*

- ❑ *To automatically scan both sides of a document, choose the Double-side setting in EPSON TWAIN Pro.*
- ❑ *Be sure the switch on lower left corner of the underside of the Automatic Document Feeder is set with the switch towards the circular mark, as shown below.*



Loading documents manually

You can load documents manually even when the Automatic Document Feeder is installed.

To load manually, lift the Automatic Document Feeder and place the document on the document table. Then lower the Automatic Document Feeder and scan the document.

Note:

- ❑ *Opening the Automatic Document Feeder while scanning is in progress will result in an option error and may result in a paper feeding error.*
- ❑ *Always close the Automatic Document Feeder and the middle cover before scanning or using the feeder.*

Scanning from the Automatic Document Feeder

The scanning instructions are divided into two sections; read “Scanning a complete document” to scan an entire document or image, or read “Scanning part of a document” to scan only a certain part of an image or document.

Scanning a complete document

You do not need to use the preview feature when scanning a full document or image. The scanner automatically finds and scans the whole image. Follow the steps below to scan an image or document.

1. Load the document in the Automatic Document Feeder.
2. Start the PageManager.
3. Select EPSON TWAIN Pro from Select Source of PageManager’s File menu.
4. Select Acquire from the File menu.
5. In the dialog box of EPSON TWAIN Pro or EPSON TWAIN Pro Network, make sure that ADF-Single-sided or ADF-Double-sided is selected from the Document Source list. Also choose appropriate settings for the scanning.
6. Click Scan.

After scanning the entire stack of documents, a window with thumb-nail images appears. In this window you can select and change the orientation of the scanned images.

Scanning part of a document

To scan only a part of an image, follow the steps below.

1. Load the document(s) in the Automatic Document Feeder.
2. Start PageManager and select **Acquire** from the File menu.
3. In the dialog box of EPSON TWAIN Pro or EPSON TWAIN Pro Network, click **Preview**. The document is ejected after previewing.

Note:

The second page will be fed immediately after the first page is scanned and ejected without being scanned.

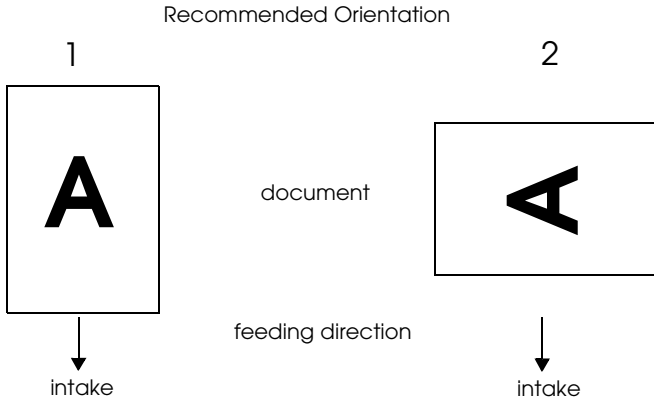
4. Draw a marquee (frame around a part of a document) to define the part of the image you want to scan by dragging the mouse pointer over that area.
5. Set document(s) to be scanned in the Automatic Document Feeder including the ejected document.
6. Choose your settings in EPSON TWAIN Pro and click the **SCAN** button. See your *Online Reference Guide* for details on choosing EPSON TWAIN Pro settings.

After scanning the entire stack of documents, a window with thumb-nail images appears. In this window you can select and change the orientation of the scanned images.

Changing orientation of scanned images

PageManager allows you to correct any misorientation of scanned images caused by the Automatic Document Feeder.

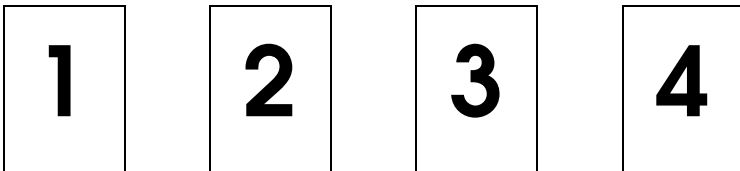
Images produced by one-sided scanning



6

When you set a stack of document in direction 1

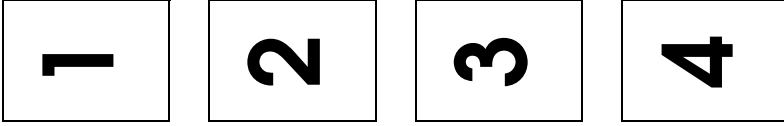
In the PageManager dialog box, the scanned images appear as shown below.



You do not need to correct the orientation of the images. Click OK to close the window.

When you set a stack of document in direction 2

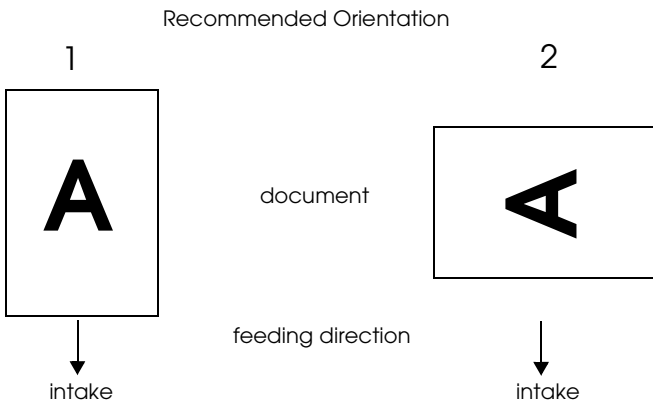
In the PageManager dialog box, the scanned images appear as shown below.



1. In the PageManager dialog box, select the All check box from Select Images. This highlights the border of all images in red.
2. Select 90° from Rotate Images and click Done.

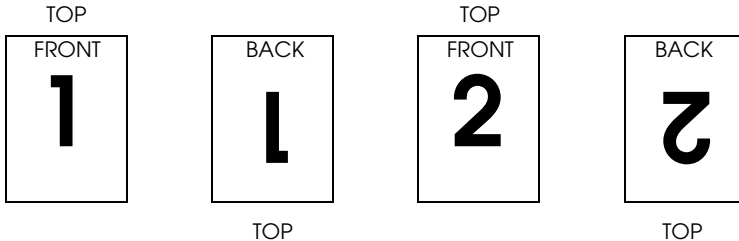
If you want to reset the rotation, click Back to Original.

Images produced by double-sided scanning



When you set a stack of document in direction 1

In the PageManager dialog box, the scanned images appear as shown below.

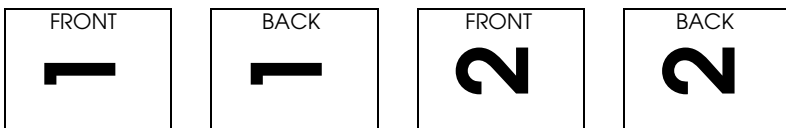


1. In the PageManager dialog box, select the Even Pages check box from Select Images. This highlights the border of the selected images in red.
2. Select Rotate 180° from Rotate Images and click Done.

If you want to reset the rotation, click Back to Original.

When you set a stack of document in direction 2

In the PageManager dialog box, the scanned images appear as shown below.

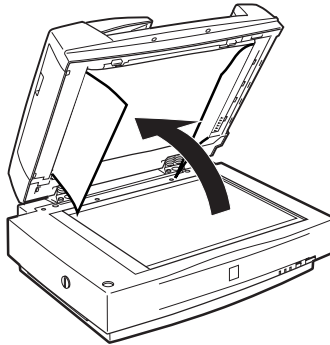


1. In the PageManager dialog box, select the All check box of Select Images. This highlights the border of all images in red.
2. Select 90° from Rotate Images and click Done.

If you want to reset the rotation, click Back to Original.

Fixing paper jams in the Automatic Document Feeder

If a paper jam occurs, first open the Automatic Document Feeder's cover, then clear the paper on the document table and determine where the paper jam occurred.

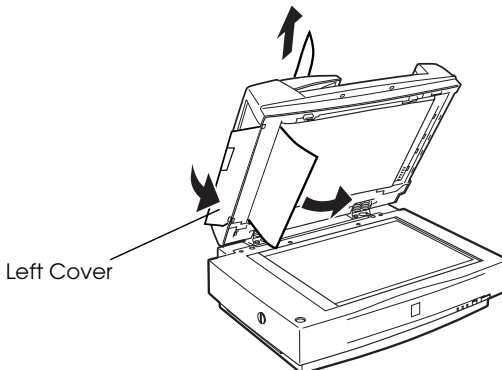


If paper jams at the feeder position:

Open the left cover and carefully pull the jammed paper out of the feeder mechanism.

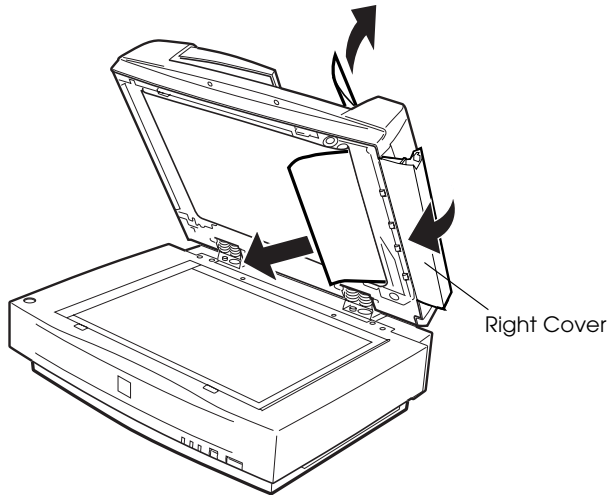
Note:

Be careful not to pull too hard; otherwise the paper may tear, making it more difficult to remove.



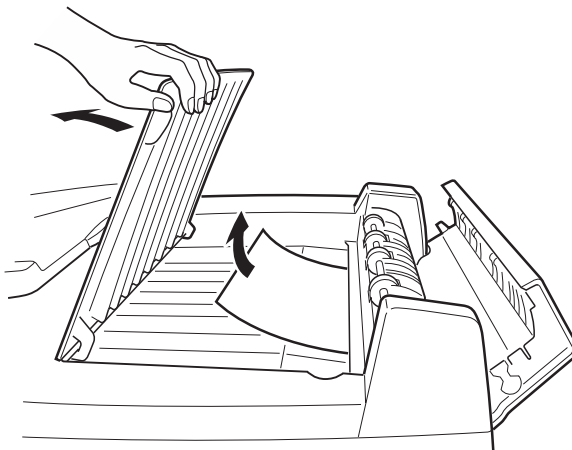
If paper jams at the paper eject position:

Open the right cover and carefully pull the jammed paper out of the feeder mechanism.



Note:

Be careful not to pull too hard. If the paper tears, open the middle cover and remove the paper as shown below.



After removing the jammed paper, close the Automatic Document Feeder cover and reset the scanner by pressing the Reset button.

Document specifications

Document size	Orientation
A3, Ledger, B4, Legal, A4, Letter, B5 or Executive, A5	Portrait
A4, Letter, B5 or Executive, A5	Landscape

Weight:	50 to 127 g/m ²
Paper quality:	High-quality bond or thermal paper
Document type:	Documents printed with impact printers, laser printers, or facsimile machines

Document conditions

Be sure to check the following before feeding a document:

- Ink on the document is dry.
- The document has no holes, is not ripped or curled, and has no articles attached to it.
- The document has no staples or other objects attached that might damage the feeder mechanism.
- The document has no folds closer than 8mm to its edge.
- The document is not a multipart form or a bound document.
- The document has no rear carbon coating.
- The document has no cut out areas.

Other precautions

Do not feed photographic sheets or particularly valuable original artwork into the Automatic Document Feeder; misfeeding a document may result in accidental wrinkling or damage.

When you are scanning high-quality color or halftone documents, it is recommended you open the Automatic Document Feeder and scan documents individually.

Using the IEEE 1394 Interface Board

The optional IEEE 1394 interface board (B80834*) offers high-speed data transfer and flexible connectivity for your scanner. It supports a peak data transfer rate of 400 Mbps, and interface cables can be connected and disconnected without turning off the scanner or your computer. You can connect multiple IEEE 1394 devices simultaneously in either a daisy-chain or tree configuration.

6

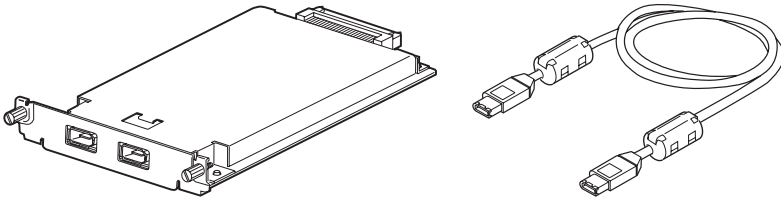
System requirements

System: Microsoft® Windows® 2000 preinstalled with IEEE 1394 OHCI port

Unless your PC already has built-in IEEE 1394 OHCI ports or an OHCI compliant IEEE 1394 board installed, you need to install an OHCI compliant IEEE 1394 board.

Installing the IEEE 1394 interface board to your scanner

To use your scanner as an IEEE 1394 device, you need to install the optional IEEE 1394 interface board.

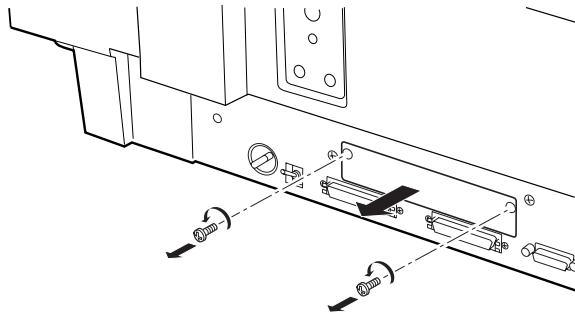


1. Turn off the scanner. Unplug any power cords, then disconnect all cables from the back panel of your scanner.
2. Use a cross-head screwdriver to remove the two screws securing the shield plate to the optional interface slot; then remove the plate. Be sure to keep both screws; you may need to use them again if you re-install the shield plate.

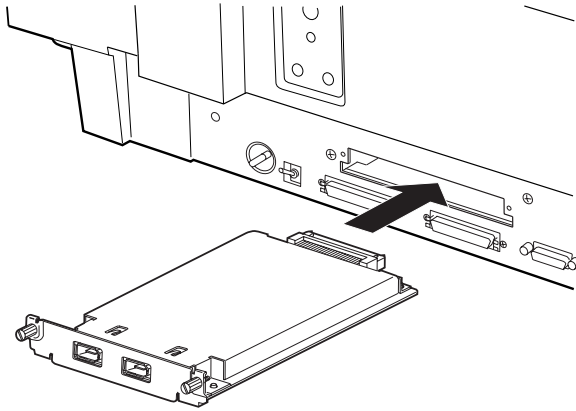


Caution:

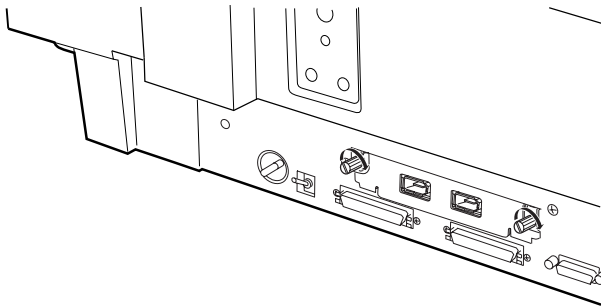
Static electricity can damage electronic components. Discharge static electricity by touching the metal frame of your scanner before handling the interface board.



3. Insert the interface board along the side guide rails into the expansion slot in the optional interface slot.



4. Secure it with the retaining screws.



5. Reconnect all cables.

Understanding IEEE 1394 connections

The interface board is equipped with two cable connectors. One is used to connect the card to the computer, and the other is used to connect other IEEE 1394 devices in a daisy chain or tree configuration. Use the cable supplied when making the connection. The cable can be connected without switching off the power supply to the computer or the scanner because it complies with the IEEE 1394 standard. Cables can be connected whether the scanner or computer are on or off.



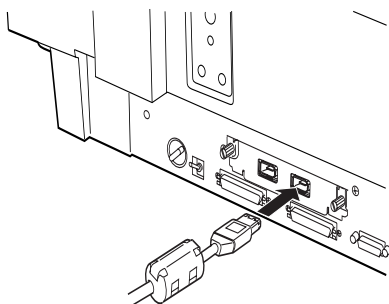
Caution:

Do not connect or disconnect IEEE 1394 cables when the scanner software is running.

Connecting to your computer

Connect the scanner to your computer or other IEEE 1394 device as follows:

1. Connect one end of the cable to the IEEE 1394 port of the interface board on back of the scanner.

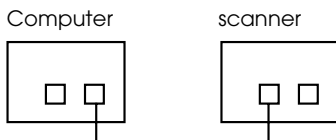


2. Connect the other end of the cable to the IEEE 1394 port on your computer, or other IEEE 1394 device.

When connecting the scanner directly to your computer

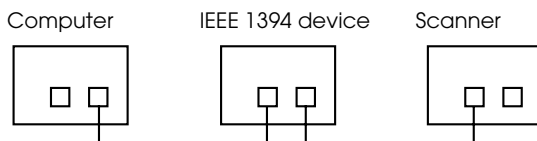
Connect the cable connector to your computer's IEEE 1394 port.

The other cable can be connected to any of the IEEE 1394 ports on the interface board attached to your scanner (any of the ports may be used).



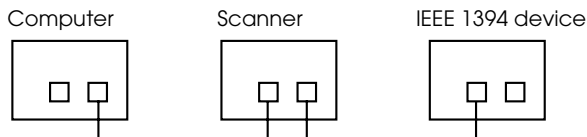
When connecting the scanner to your computer with other IEEE 1394 devices

If IEEE 1394 devices are already connected to your computer, connect the scanner so that it is the last IEEE 1394 device in the chain.



Note:

The IEEE 1394 cable supplied with the optional IEEE 1394 interface board has 2 six pin connectors at each end. If IEEE 1394 devices with four pin connectors are used in a daisy chain or tree, you will need to use a 6:4 converter cable.



Note:

Connect the cable to a vacant IEEE 1394 connector if additional IEEE 1394 devices are to be connected to your scanner.

Installing the scanner software

After installing the interface board as described above, you need to install the scanner software. For details on installing the scanner software, see Chapter 3, "Installing the Software."

Glossary

additive primary colors

The colors of red, green and blue (RGB) - which give the perception of white when fully added. These are the colors of the color system used with monitors and scanners.

bi-level data

Image data that is composed of 1 bit per pixel. A pixel is represented by a single bit of digital data that can express only 1 (light) or 0 (dark).

bit

Short for binary digit. The smallest unit of data in computer processing. A bit can represent two values: on and off, or 1 and 0.

bit/pixel

The unit that indicates the number of bits allocated for a pixel. The larger the bit value, the more detail of a pixel will be reproduced.

brightness

A scanner function to lighten or darken the output image data.

byte

A unit of information consisting of eight bits. A byte can represent a control code or character.

carriage

A component of the scanner that contains the optical sensor and light source for scanning.

color correction

A method of adjusting the color image data for a particular type of device so that the reproduction results are as close as possible to the original colors.

color separation

A process of converting full-color images into a limited number of primary colors. Additive primary colors (red, green, and blue) are used by the scanner, and the subtractive primary colors (cyan, magenta, and yellow) plus black are used for printing press separation.

daisy chain

A SCSI bus arrangement that allows several devices to be connected simultaneously in a line to a single computer. See *SCSI*.

default

A set of values used when no other selections have been made. These are sometimes called factory defaults if the original values have not been changed since the scanner has left the factory.

dithering

A process in which software or an output device simulates continuous tones with groups of dots.

document

The item, such as a sheet of paper or a book, that is placed on the document table for the scanner to read.

dpi

Short for dots per inch. A unit of measurement for resolution. The higher the value, the higher the resolution.

dropout color

A color the scanner does not recognize and ignores. You can select and deselect dropout colors in the scanner software.

ESC/I

Abbreviation for EPSON Standard Code for Image scanners. A system of commands that allows you to control image scanners from your software.

ESC/P

Abbreviation for EPSON Standard Code for Printers. A system of commands that allows you to control printers from your software.

exposure

A scanner function that lightens or darkens the scanned image data.

grayscale

Images represented with various shades of gray in addition to black and white.

halftoning

A method of reproducing images with patterns of dots to improve the quality of the output.

home position

The position at the rear (nearest the cover hinge position) of the scanner where the carriage rests before a scanning operation.

ICM

Image Color Matching. Windows color management system designed to help you get WYSIWYG (what you see is what you get) color output. This software displays colors on your screen as they exist on the scanned documents, or prints colors as you see them on your screen.

imagesetter

A device that uses computer files to produce high-resolution text and graphics output on film or paper. These are usually found in service bureaus and printing companies.

impact dot printer

A printer that transfers ink onto the paper by striking an ink ribbon with a number of small pins.

ink jet printer

A printer that transfers ink onto the paper by spraying the ink through a number of small nozzles.

interface

A piece of hardware, a method, or a standard used for connection between or among computer devices.

laser printer

A printer that uses a laser and the electrophotographic method to print a full page at a time. The laser is used to “paint” a charged drum with light, to which toner is applied and then transferred onto paper.

line sequence

A type of color scanning that separates primary colors line by line. The carriage makes only one pass.

marquee

A moveable and adjustable frame that marks the area of an image that will be previewed or scanned.

monochrome

Black and white images, or images represented only by the intensity of luminosity.

OCR

Optical Character Recognition. The technology that allows computers to “read” text from physical objects. OCR requires a graphical representation of text to interpret, which usually comes from a scanned image.

page sequence

The type of color scanning in which the entire image is scanned once for each separate color.

pixel

Short for picture element. Each image is composed of a number of pixels. Pixels are also counted in units of dots.

plain bi-level

Bi-level image data without the halftoning process.

port

An interface channel through which data is transmitted between devices.

primary colors

Basic colors. See *additive primary colors* and *subtractive primary colors*.

resolution

Indication of how finely an image is resolved into pixels. Measured in dots per inch (dpi), pixels per inch (ppi), or samples per inch (spi).

scan

An operation performed by the sensor and the carriage. The image is divided into pixels by scanning.

scanning area

The physical size of the image that can be scanned by the scanner.

SCSI

Small Computer System Interface. This is one method used to connect your computer to peripherals such as scanners, hard disk drives, CD-ROM drives, and so on.

SCSI ID

The numbers that all devices in a SCSI connection (see *daisy chain*) use to identify each other. If the same ID number is used by two devices in the same daisy chain, the devices cannot operate properly.

sRGB

A standard color space used as the default color space within the Windows 98 color management system (ICM 2.0).

subtractive primary colors

The colors of cyan, magenta, and yellow (CMY) - which produce black when mixed in certain amounts. In printing, black is often added to give more definition as mixing of actual inks cannot produce pure black.

terminator

A device that stops electronic signals, and prevents them from proceeding or returning to other devices. This is necessary to stop a signal from continuously bouncing between devices.

threshold

A reference point that is used to determine whether data will be processed as "on" or "off". In the case of color image data, "on" means that a certain color will appear in a pixel or dot, and "off" means that color will not appear there.

tone correction

A method of adjusting the tone curve so that the reproduction results on different types of output devices have gradations similar to the original image.

tone curve

The graph that shows the contrast ratio between the input (original image) and output (image data) in image processing.