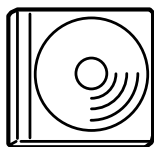


Where to Find Information

Setup Guide (this manual)

Contains information on how to place the printer, assembling the printer and installing the printer driver.

Online guides



The CD-ROM shipped with your printer includes the following online guides as well as the printer driver.

Microsoft Internet Explorer 4.0 or later, or Netscape Navigator 4.0 or later, must be installed in your computer to read the Online Guide.

Reference Guide

- How to use the printer
- How to solve the problems
- How to keep your printer in good condition
- Safety information and technical specifications

Online Help for each printer software

Click Help for detailed information and instructions on the printer software that controls your printer. Online Help is automatically installed when you install the printer software.

EPSON®

Laser Printer

EPL-N2120

Setup Guide

<i>Safety Instructions</i>	1
1 <i>Removing the Protective Materials</i>	6
2 <i>Finding a Place for the Printer</i>	8
3 <i>Assembling the Printer</i>	10
4 <i>Installing the Options</i>	13
5 <i>Testing and Connecting the Printer</i>	24
6 <i>Installing the Printer Software</i>	27



Printed on Recycled Paper.

All rights reserved. No part of this publication may be reproduced, stored in a retrieval system, or transmitted in any form or by any means, mechanical, photocopying, recording, or otherwise, without the prior written permission of SEIKO EPSON CORPORATION. No patent liability is assumed with respect to the use of the information contained herein. Neither is any liability assumed for damages resulting from the use of the information contained herein.

Neither SEIKO EPSON CORPORATION nor its affiliates shall be liable to the purchaser of this product or third parties for damages, losses, costs, or expenses incurred by purchaser or third parties as a result of: accident, misuse, or abuse of this product or unauthorized modifications, repairs, or alterations to this product, or (excluding the U.S.) failure to strictly comply with SEIKO EPSON CORPORATION's operating and maintenance instructions.

SEIKO EPSON CORPORATION and its affiliates shall not be liable against any damages or problems arising from the use of any options or any consumable products other than those designated as Original EPSON Products or EPSON Approved Products by SEIKO EPSON CORPORATION.

EPSON and EPSON ESC/P are registered trademarks and EPSON ESC/P 2 is a trademark of SEIKO EPSON CORPORATION.

General Notice: Other product names used herein are for identification purposes only and may be trademarks of their respective owners. EPSON disclaims any and all rights in those marks.

Copyright © 2001 by SEIKO EPSON CORPORATION, Nagano, Japan.

Warnings, Cautions, and Notes



Warnings must be followed carefully to avoid bodily injury.



Cautions must be observed to avoid damage to your equipment.

Notes contain important information and useful tips on the operation of your printer.

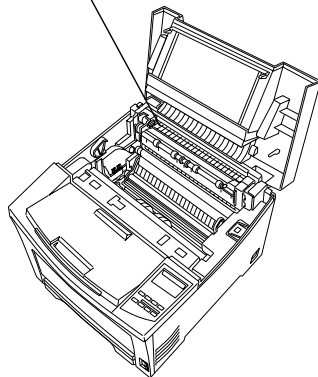
Safety Instructions

Laser Printer Precautions

This printer uses laser technology. Follow the precautions below carefully to ensure safe, efficient operation.

- ❑ Be careful not to touch the fuser, which is marked CAUTION! HIGH TEMPERATURE. If the printer has been in use, the fuser can be very hot.
- ❑ Do not attempt to modify or take the imaging cartridge apart. It cannot be refilled.
- ❑ Do not touch the toner and avoid all toner contact with your eyes.
- ❑ Do not dispose of used imaging cartridges in fire, as they can explode and cause injury. Dispose of them according to local regulations.

CAUTION! HIGH TEMPERATURE



Important Safety Instructions

Read all of these instructions before operating your printer:

- ❑ Follow all warnings and instructions marked on the printer.
- ❑ Unplug this printer from the wall outlet before cleaning. Use a damp cloth for cleaning and do not use liquid or aerosol cleaners.
- ❑ Avoid touching the components inside the printer unless instructed to do so in this guide.

- ❑ Never force printer components into place. Although the printer is designed to be sturdy, rough handling can damage it.
- ❑ Be sure to keep consumables out of the reach of children.
- ❑ Do not leave jammed paper inside of the printer. This can cause the printer to overheat.
- ❑ Do not use this printer near water.
- ❑ Do not place the printer on an unstable surface.
- ❑ Do not put your printer where the cord will be stepped on.
- ❑ Avoid using outlets that other appliances are plugged into.
- ❑ Slots and openings in the cabinet and the back or bottom are provided for ventilation. Do not block or cover them.
- ❑ Do not put the printer on a bed, sofa, rug, or other similar surface or in a built-in installation unless proper ventilation is provided.
- ❑ Use the type of power source indicated on the label. If you are not sure of the type of power available, consult your dealer or local power company.
- ❑ If you are unable to insert the plug into the outlet, contact a qualified electrician.
- ❑ If you use an extension cord, make sure that the total of the ampere ratings on the products plugged into the extension cord does not exceed the extension cord ampere rating.
- ❑ Never push objects of any kind through cabinet slots as they may touch dangerous voltage points or short out parts that could result in a fire or electric shock.
- ❑ Never spill liquid of any kind on the printer.

- ❑ Except as specifically explained in this guide, do not attempt to service this product yourself. Opening or removing those covers that are marked **Do Not Remove** may expose you to dangerous voltage points or other risks. Refer all servicing in those compartments to service personnel.
- ❑ Adjust only those controls that are covered by the operating instructions. Improper adjustment of other controls may result in damage and may require a qualified service representative to restore the product normal operation.
- ❑ Unplug this printer from the wall outlet and refer servicing to qualified service personnel under the following conditions:
 - A. When the power cord or plug is damaged or frayed.
 - B. If liquid has been spilled into it.
 - C. If it has been exposed to rain or water.
 - D. If it does not operate normally when the operating instructions are followed. Adjust only those controls that are covered by the operating instructions. Improper adjustment of other controls may result in damage and may require a qualified service representative to restore the product to normal operation.
 - E. If it has been dropped or the cabinet has been damaged.
 - F. If it exhibits a distinct change in performance, indicating a need for service.

Safety Information

Laser safety labels



Warning:

The use of controls, or the performance of procedures and adjustments other than those specified in this guide may result in hazardous radiation exposure.

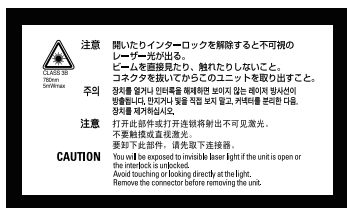


Your printer is a Class 1 laser product as defined in the IEC60825 specifications. The label shown below is attached in countries where required.

Internal laser radiation

Max. Radiation Power 0.31 mW

Wave Length 770 to 795 nm



This is a Class IIIb Laser Diode Assembly that has an invisible laser beam. The printer head unit is NOT A SERVICE ITEM, therefore, the printer head unit should not be opened under any circumstances. An additional laser warning label is affixed to the inside of the printer.

Ozone safety

Ozone emission

Ozone gas is generated by laser printers as a by-product of the printing process. Ozone is produced only when the printer is printing.

Ozone exposure limit

The recommended exposure limit for ozone is 0.1 parts per million (ppm) expressed as an average time-weighted concentration over an eight (8) hour period.

The EPSON EPL-N2120 laser printer generates less than 0.1 ppm for 8 hours of continuous printing.

Minimize the risk

To minimize the risk of exposure to ozone, you should avoid the following conditions:

- Use of multiple laser printers in a confined area (see above)
- Operation in conditions of extremely low humidity
- Poor room ventilation
- Long, continuous printing together with any of the above

Printer location

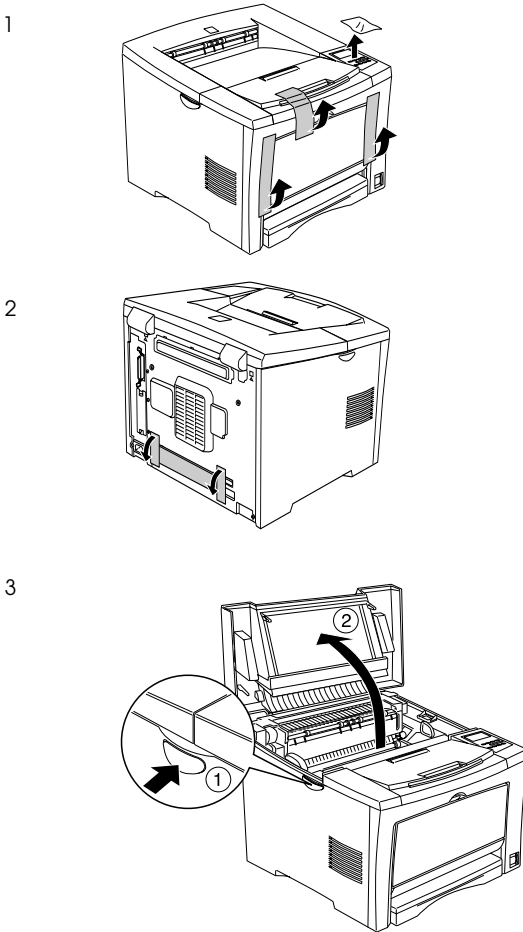
The printer should be located so that the exhaust gases and heat generated are:

- Not blown directly into the user's face
- Vented directly out of the building whenever possible

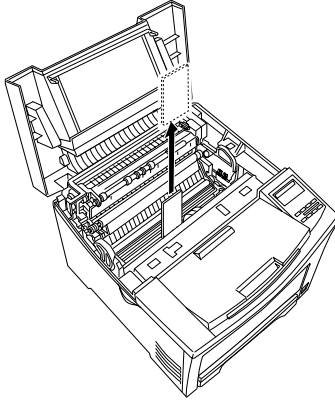
1 *Removing the Protective Materials*

Before installing the imaging cartridge and the paper cassette, you must first remove the protective materials from the printer.

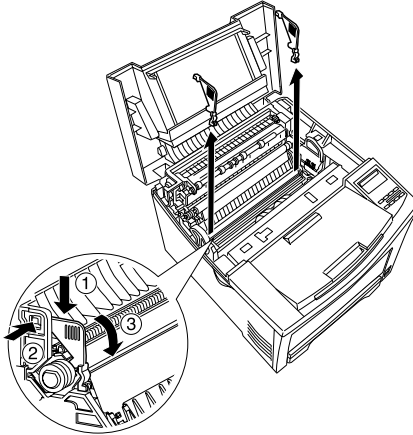
Follow these steps to remove the printer's protective materials:



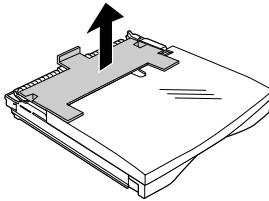
4



5

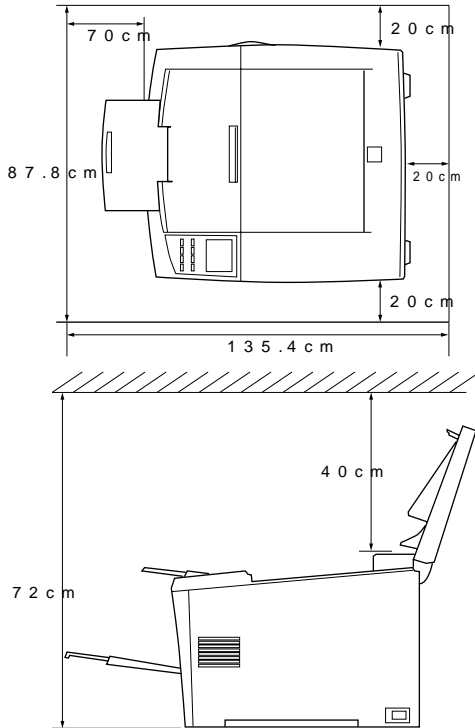


6



2 Finding a Place for the Printer

Allow adequate space for easy operation and maintenance.



Additional space needed for options;

250-Sheet Lower Paper Cassette Unit	7.9 cm to the bottom of the printer
500-Sheet Lower Paper Cassette Unit	10.8 cm to the bottom of the printer
Duplex Unit	30 cm to the rear side of the printer

Always follow the precautions below when finding a place to locate the printer.

- ❑ Place the printer where you can easily unplug the power cord.
- ❑ Keep the entire computer and printer system away from potential sources of interference, such as loudspeakers or the base units of cordless telephones.



Caution:

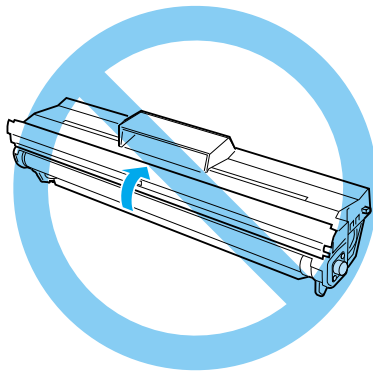
- ❑ *Leave adequate room around the printer to allow for sufficient ventilation.*
- ❑ *Avoid locations that are subject to direct sunlight, excessive heat, moisture, or dust.*

3 Assembling the Printer

Installing the Imaging Cartridge

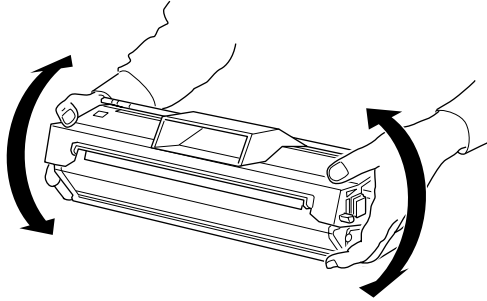
Handling precautions:

- ❑ When handling the imaging cartridge, always place them on a clean smooth surface.
- ❑ If toner gets onto your skin or clothes, wash it off with soap and water immediately.
- ❑ Wait for at least one hour before installing an imaging cartridge after moving it from a cool to a warm environment to prevent damage from condensation.
- ❑ Do not turn the imaging cartridge upside down or stand it on its ends. Do not expose the imaging cartridge to light any longer than necessary.
- ❑ Do not open the drum's protective cover and avoid exposing the imaging cartridge to room light any longer than necessary. Overexposing the cartridge may cause abnormally dark or light areas to appear on the printed page and reduce the life of the cartridge.

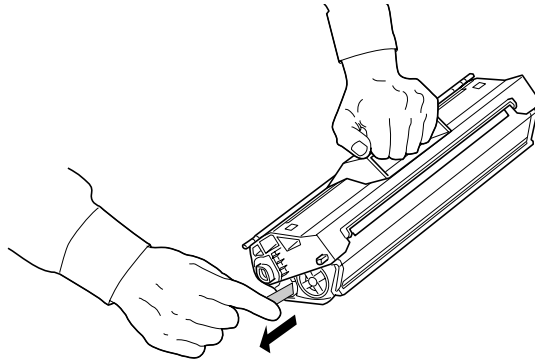


Follow these steps to install the imaging cartridge:

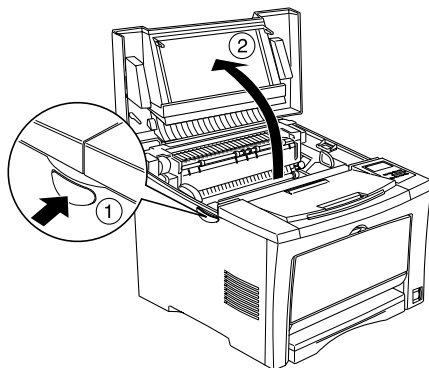
1. While holding the imaging cartridge horizontally, gently shake it a few times to distribute the toner evenly.



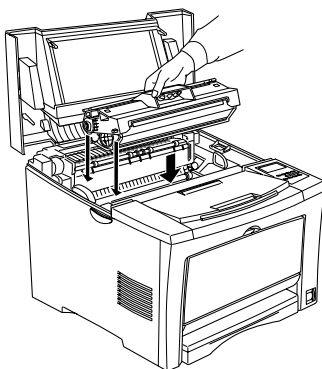
2. Pull the clear seal all the way out with firm, even pressure.



3. Press the latch on the left side of the printer and open the printer cover.



4. Turn the arrow on the cartridge to the printer cover side and slide the cartridge into place. Align the guides on both sides, then insert the cartridge firmly.



5. Gently press down on the printer cover until it clicks shut.

4 Installing the Options

If you purchased any options with the printer, install them before plugging in the printer. To install the 250-Sheet Paper Cassette Unit, 500-Sheet Paper Cassette Unit and the Duplex Unit, refer to the manual for each option.

Installing a Memory Module

By installing a DIMM (Dual In-line Memory Module), you can increase printer memory up to 528 MB. You may want to add additional memory if you are having difficulty printing complex, graphics-intensive pages or if you regularly use numerous downloaded fonts.

You can purchase DIMMs from various vendors. Be sure the DIMM you purchase meets the following requirements:

DRAM type	Synchronous Dynamic RAM Dual In-line Memory Module (SDRAM DIMM)
Capacity	32, 64, 128, 256 or 512 MB*
CAS Latency	CL=2
Type	168-pin type, 64bit, with SPD PC 100 compliant
Dimensions	Within 134 × 36 mm (5.27 × 1.42 inches), with a thickness of 10 mm (0.4 inch)

* Contact your dealer or a qualified service representative about compatible SDRAM.



Caution:

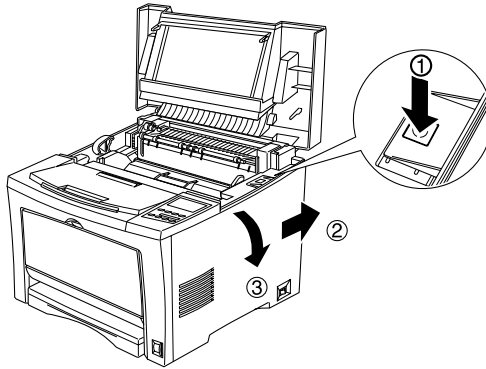
Before you install a memory module, be sure to discharge any static electricity by touching a grounded piece of metal. Otherwise, you may damage static-sensitive components.



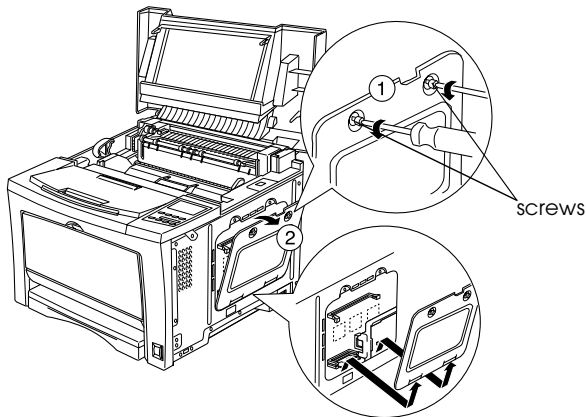
Warning:

Be careful when working inside the printer as some components are sharp and may cause injury.

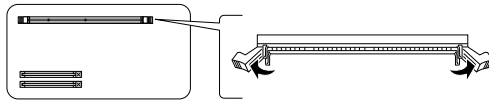
1. Make sure the printer is turned off and unplug the power cord.
2. Open the printer cover by pressing the latch, then remove the printer's right side cover.



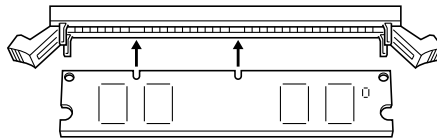
3. Loosen the screws that secure the shield cover, then remove the cover.



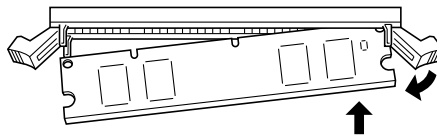
4. Push the clips on each side of the RAM slot outward.



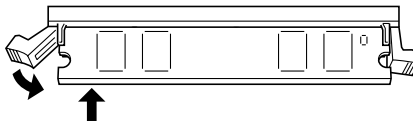
5. Align the two depressions on the base of the DIMM with the protrusions inside the RAM slot to determine the position of attachment.



6. Insert one end of the DIMM into the slot and push until the retaining clip comes up.

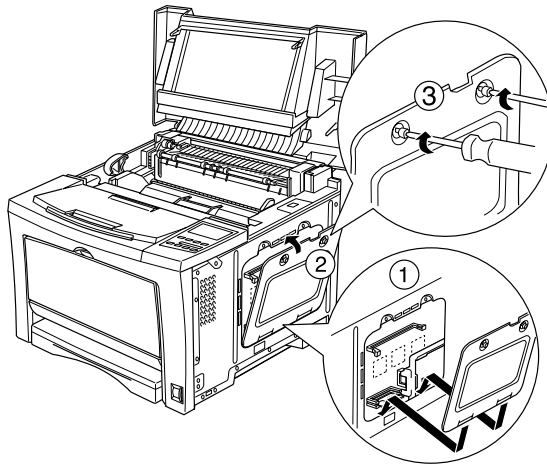


7. Push the other end of the DIMM into the slot until the clip comes up to retain the memory module securely.



Caution:
*Do not remove any modules from the circuit board.
Otherwise, the printer will not work.*

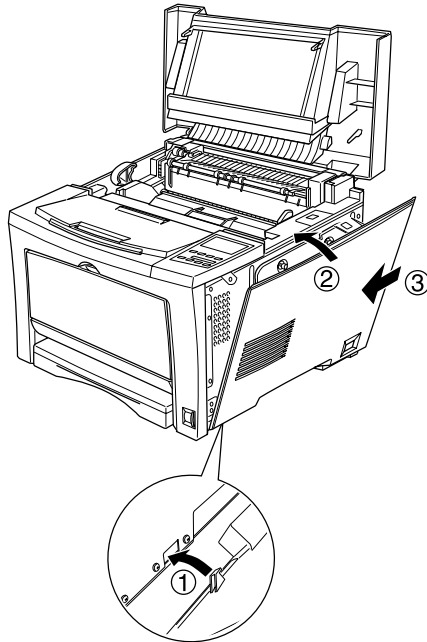
8. Replace the shield cover, then secure it with its screws.



Caution:

When replacing the shield cover, be sure not to pinch the wires inside the printer between the printer case and the shield cover.

9. Replace the printer's right side cover.



10. Press down on the printer cover until it clicks shut.

To verify that memory is correctly installed, print a status sheet. For instructions on how to print a status sheet, see "Printing a status sheet" on page 25.

If an incorrect amount of memory is shown on the status sheet, turn off the printer and review the steps above to make sure you correctly installed the DIMM. If the amount of memory is still incorrect, contact your dealer or a qualified service representative for assistance.

Installing a ROM Module

The availability of optional ROM modules that expand your printer's features differ, depending on the country of purchase.



Caution:

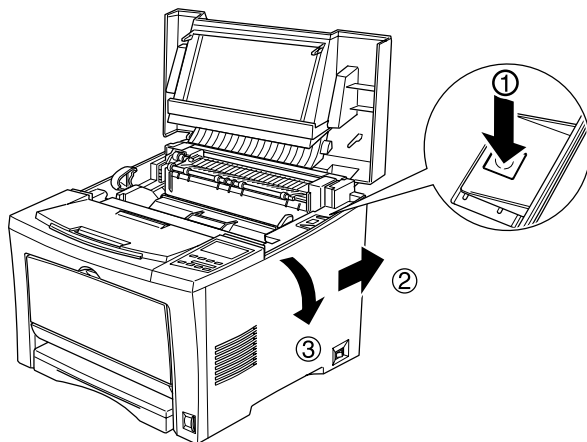
Before you install a ROM module, be sure to discharge any static electricity by touching a grounded piece of metal. Otherwise, you may damage static-sensitive components.



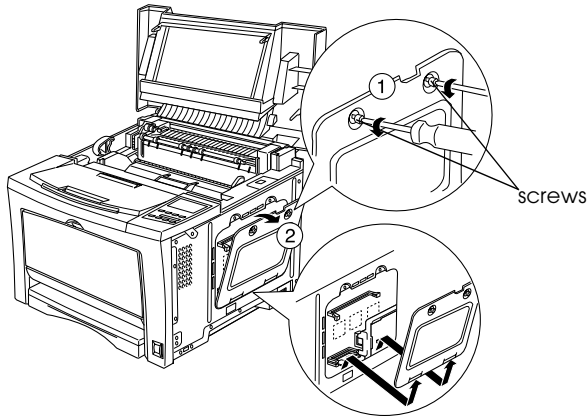
Warning:

Be careful when working inside the printer as some components are sharp and may cause injury.

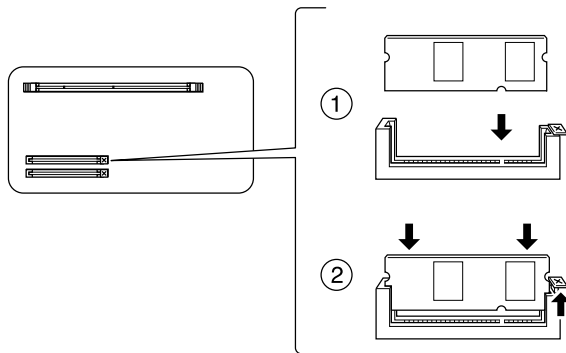
1. Make sure the printer is turned off and unplug the power cord.
2. Open the printer cover by pressing the latch, then remove the printer's right side cover.



3. Loosen the screws that secure the shield cover, then remove the shield cover.



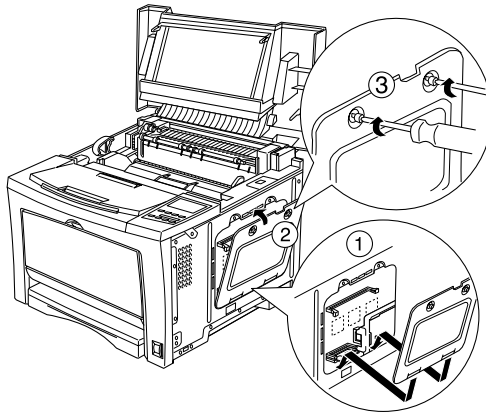
4. Insert the ROM module all the way into the slot as shown below. The button at the top of the slot will jut out when the module is inserted correctly.



Caution:

- ❑ Do not remove any modules from the circuit board. Otherwise, the printer will not work.
- ❑ Do not force the ROM module into the slot.

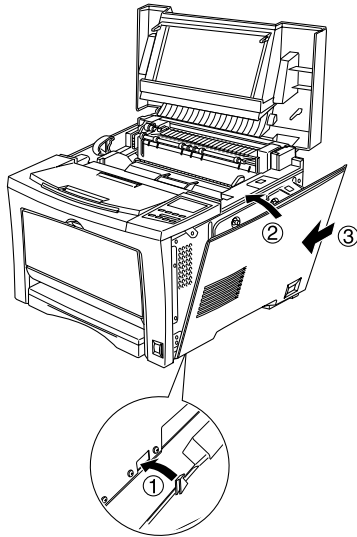
5. Replace the shield cover, then secure it with its screws.



Caution:

When replacing the shield cover, be sure not to pinch the wires inside the printer between the printer case and the shield cover.

6. Replace the printer's right side cover.



7. Press down on the printer cover until it clicks shut.

To verify that the ROM module is correctly installed, print a status sheet. If the module is not listed on the status sheet, try reinstalling. Make sure that it is securely fastened to the ROM slot on the printer. For instructions on how to print a status sheet, see "Printing a status sheet" on page 25.

Installing an Interface Card

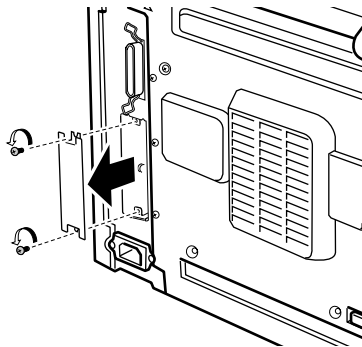
Your printer comes with a Type B interface slot. Various optional interface cards are available to expand your printer's interface options. See the *Reference Guide* for more details on optional interface cards.



Caution:

Before you install the interface card, be sure to discharge any static electricity by touching a grounded piece of metal. Otherwise, you may damage static-sensitive components.

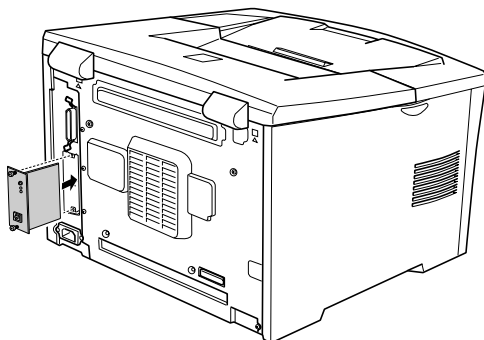
1. Make sure the printer is turned off and unplug the power cord.
2. Remove the two screws that secure the Type-B interface slot cover and remove the cover.



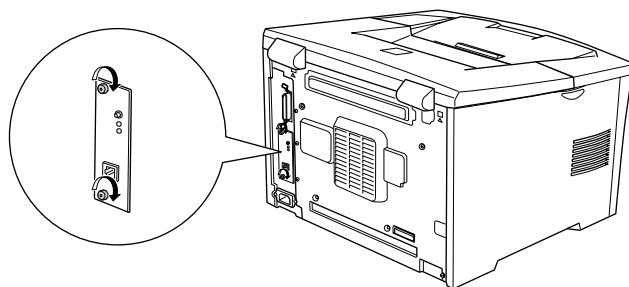
3. Slide the interface card into the grooves in the interface slot. Push it in firmly to lock the card into place.

Note:

When inserting the interface card, make sure that the component side of the card is on the left.



4. Secure the interface card with the two retaining screws.



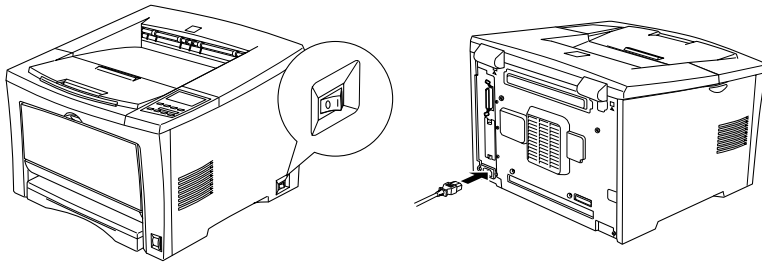
To confirm that the interface card is installed correctly, print a status sheet. If the AUX interface is not listed on the status sheet, try reinstalling making sure the card is securely fastened to the socket on the printer. For instructions on how to print a status sheet, see “Printing a status sheet” on page 25.

If the interface is not listed on the status sheet, try reinstalling the card making sure the card is securely fastened to the socket inside the printer.

5 *Testing and Connecting the Printer*

Plugging in the Printer

Make sure the printer is turned off. Insert the power cord into the back of the printer. Then plug the other end into a properly grounded electrical outlet.



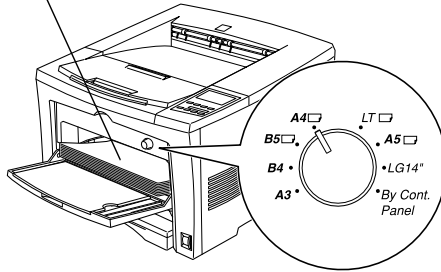
Testing the Printer

To test whether the printer is set up correctly, print a status sheet. The status sheet contains information about the printer, including the current settings.

Loading paper

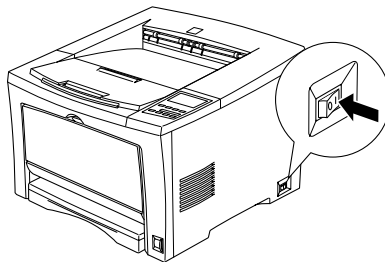
Fan a stack of A4 size paper, then tap it on a flat surface to even the edges. Load the paper in the MP tray.

printable surface up



Printing a status sheet

1. Turn on the printer. After about 13 seconds, the display shows `Ready`.



2. Press the Enter button two times.

If the printer cannot print a status sheet, or if you are unable to get the printer to print a correct status sheet, contact your dealer.

Connecting to the Computer

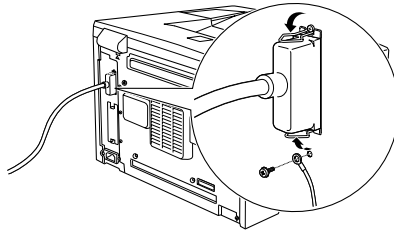
To connect your computer to the printer's built-in parallel interface, you need a shielded, twisted-pair parallel interface cable that is IEEE-1284 compatible.

Your printer also has room for an optional Type-B interface connector. See "Installing an Interface Card" on page 22 for more information.

1. Make sure both the printer and the computer are off.
2. Attach the parallel interface cable to the printer as shown.

Note:

Use only a shielded, twisted-pair parallel cable.



3. Plug the other end of the cable into the computer's parallel interface connector.

6 *Installing the Printer Software*

When you install the printer driver, the following are installed.

- ❑ **Printer driver**
The printer driver gives you complete control settings over your printer with the Microsoft® Windows® Me/98/95/2000, Windows NT® 4.0. With it, you can make various settings such as print quality and paper size.
- ❑ **EPSON Status Monitor 3**
The EPSON Status Monitor 3 utility allows you to view printer status information such as the amount of toner remaining and check for any printer errors.
- ❑ **Online help**
Online help provides on-screen access to detailed information and instructions about printer settings. You can access online help by clicking the Help button in the printer driver.

Make sure your printer is turned off.

Insert the CD-ROM that comes with your printer into your CD-ROM drive. Then follow the on-screen instructions.

Note:

If the EPSON Installation Program screen does not appear automatically, click Start and choose Run. Then, enter D:\EPSETUP.EXE and click OK (substitute the appropriate drive letter if necessary).



To install other software, please see the *Reference Guide*.

EPSON OVERSEAS MARKETING LOCATIONS

Epson America, Inc.

3840 Kilroy Airport Way
Long Beach, CA 90806
Phone: (562) 981-3840
Fax: (562) 290-5220

EPSON UK LTD.

Campus 100, Maylands Avenue,
Hemel Hempstead, Herts,
HP2 7TJ, U.K.
Phone: (+44) 01442 261144
Fax: (+44) 01442 227227

EPSON DEUTSCHLAND GmbH

Zülpicher Straße 6,
40549 Düsseldorf Germany
Phone: (0211) 56030
Fax: (0211) 5047787

EPSON FRANCE S.A.

68 bis, rue Marjolin
92300, Levallois-Perret, France
Phone: 33.1.41.86.26.56
Telex: 610657

EPSON AUSTRALIA PTY. LTD.

70 GIBBES STREET,
CHATSWOOD 2067 NSW.
Phone: 2-9903-9000
Fax: 2-9903-9177

EPSON SINGAPORE PTE. LTD.

No. 1 Temasek Avenue #36-00
Millenia Tower, Singapore 039192
Phone: (065) 33 77 911
Fax: (065) 33 41 185

EPSON HONG KONG LTD.

Rooms 4706-10, 47/F,
China Resources Bldg.,
26 Harbour Road, Wanchai, Hong Kong
Phone: 2585-4300
Fax: 2827-7083

EPSON TAIWAN TECHNOLOGY & TRADING LTD.

10F, No. 287 Nanking E. Road, Sec. 3,
Taipei, Taiwan, R.O.C.
Phone: (02) 717-7360
Fax: (02) 712-9164

EPSON ITALIA S.p.A.

V.le F.lli Casiraghi 427
20099 Sesto S.Giovanni
MI, Italy
Phone: +3902262331
Fax: +39022440750

EPSON IBERICA S.A.

Av. de Roma, 18-26
08290 Cerdanyola del Valles
Barcelona, Spain
Phone: 582. 15.00
Fax: 582. 15.55

**SEIKO EPSON CORPORATION
(Hirooka Office)**

80 Harashinden, Hirooka
Shiojiri-shi, Nagano-ken
399-0785 Japan

EPSON PORTUGAL, S.A.

R. do Progresso, 471, 1° Perafita
4460 Matosinhos, Portugal
Phone: (02) 996 14 02
Fax: (02) 996 14 11