

簡易操作說明

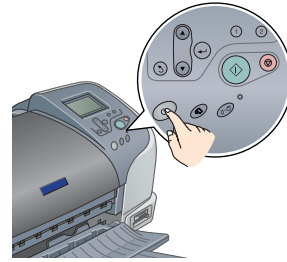
控制面板的介紹



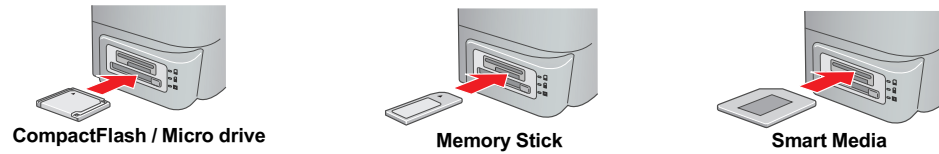
按鍵	功能
電源	開啓或關閉電源。
維護	執行各項進階設定與印表機維護工具。 若“o”燈號閃爍時，排除缺墨、缺紙、夾紙等問題後，按下此鍵，印表機會繼續列印。 當墨水用盡時，按下此鍵，可執行更換墨水卡匣。
滾筒紙	完成列印後，按下此鍵，會裁切滾筒紙，並將滾筒紙退至起始列印的位置。 按下此鍵不放，印表機會退出滾筒紙。
Print (列印)	開始列印。
Cancel(取消)	取消列印或在液晶顯示面板上所做的設定。
Back(回復)	回到主選單。
Select(選擇)	開啓細項設定或選定設定值。
上、下	在選單中上下移動游標。 增加或減少數值。
自定	按下此鍵 2 秒鐘不放，會將液晶顯示面板上的設定值儲存成自定值。 按下此鍵，會載入所儲存的自定值。

列印前的準備工作

1. 開啟印表機的電源



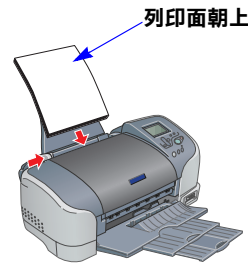
2. 插入記憶卡



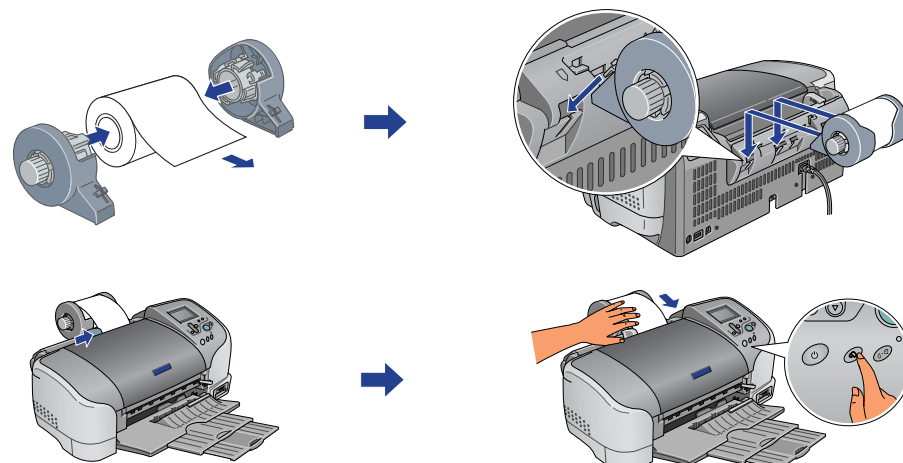
將記憶卡上的 ▲ 符號面朝上，插入記憶卡插槽中

3. 放置紙張

單張紙



滾筒紙

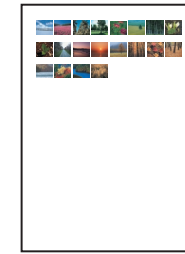


將滾筒紙放入進紙槽中，再移動邊緣定位器，固定紙張

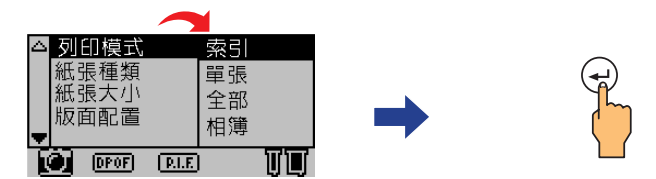
按下『』鍵，將滾筒紙饋入印表機中。
(為了能夠順利進紙，請輕握滾筒紙邊緣)

索引

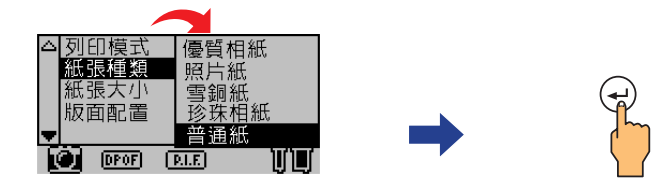
將記憶卡中所有的照片列印成索引照片，可幫助您選擇想要列印的照片。



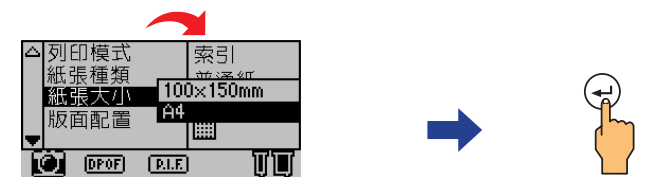
1. 列印模式：索引。



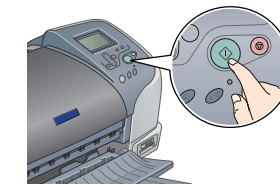
2. 紙張種類：普通紙。



3. 紙張大小：A4。



4. 按下『』鍵，列印索引照片。



All rights reserved. No part of this publication may be reproduced, stored in a retrieval system, or transmitted in any form or by any means, electronic, mechanical, photocopying, recording, or otherwise, without the prior written permission of SEIKO EPSON CORPORATION. The information contained herein is designed only for use with this EPSON printer. EPSON is not responsible for any use of this information as applied to other printers. Neither SEIKO EPSON CORPORATION nor its affiliates shall be liable to the purchaser of this product or third parties for damages, losses, costs, or expenses incurred by the purchaser or third parties as a result of: accident, misuse, or abuse of this product or unauthorized modifications, repairs, or alterations to this product, or (excluding the U.S.) failure to strictly comply with SEIKO EPSON CORPORATION's operating and maintenance instructions.

SEIKO EPSON CORPORATION shall not be liable for any damages or problems arising from the use of any options or any consumable products other than those designated as Original EPSON Products or EPSON Approved Products by SEIKO EPSON CORPORATION. SEIKO EPSON CORPORATION shall not be held liable for any damage resulting from electromagnetic interference that occurs from the use of any interface cables other than those designated as EPSON Approved Products by SEIKO EPSON CORPORATION. EPSON is a registered trademark and EPSON Stylus is a trademark of SEIKO EPSON CORPORATION. Microsoft and Windows are registered trademarks of Microsoft Corporation.

Apple and Macintosh are registered trademarks of Apple Computer, Inc.


General Notice: Other product names used herein are for identification purposes only and may be trademarks of their respective owners. EPSON disclaims any and all rights in those marks.

單張

指定記憶卡中某張相片，做多樣版面列印。

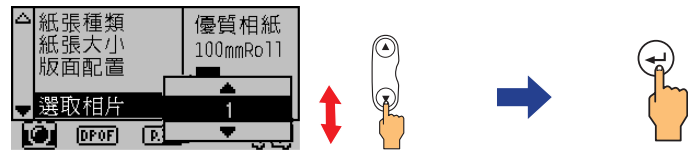


以 EPSON Premium Glossy Photo Paper(優質照片紙)，100mm x 8m 滾筒紙為例。

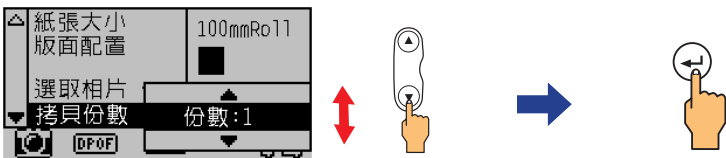
1. 列印模式：單張。
2. 紙張種類：優質相紙，
3. 紙張大小：100mmRoll。
4. 版面配置：



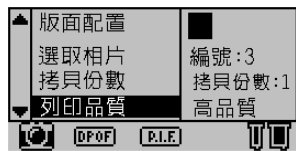
5. 選取相片：指定要列印的相片編號。





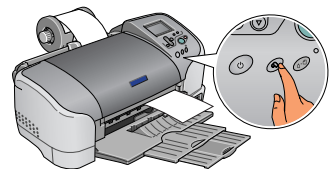
6. 拷貝份數：1。



7. 列印品質：高品質。



8. 按下『』鍵，列印單張照片。
9. 列印完成之後，請按下『』鍵，即可裁切相片。




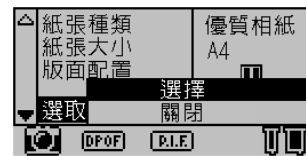
相簿


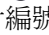

指定記憶卡中多張相片，做多樣版面列印。




以 EPSON Premium Glossy Photo Paper(優質照片紙)，A4 為例。

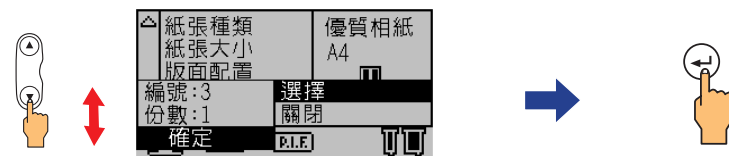
1. 列印模式：相簿。
2. 紙張種類：優質相紙。
3. 紙張大小：A4。
4. 版面配置：
5. 選取相片：選擇。




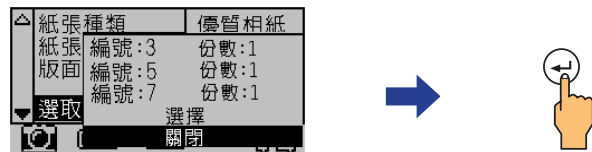
6. 編號：指定要列印的相片編號。
份數：指定要列印的份數。
按下『』鍵，開啟細項設定，按下『』鍵，指定要列印的相片編號 (或份數)，按下『』鍵記錄所選擇的相片編號 (或份數)。



7. 將游標移到“確定”，按下『』鍵。

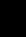


8. 要繼續選擇下一張相片，請重複步驟 6 和步驟 7 的操作。
9. 完成相片的選擇，請選擇“關閉”，再按下『』鍵。




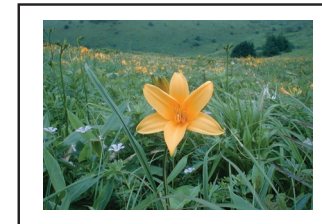
10. 按下『』鍵，列印相片。


版面配置種類

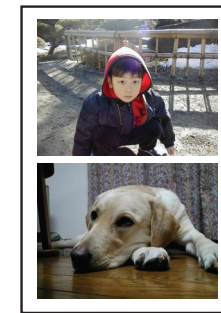
無邊 (直印) 



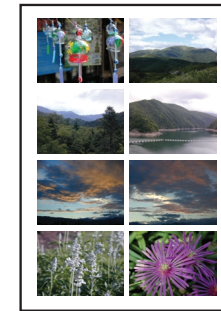
留邊 




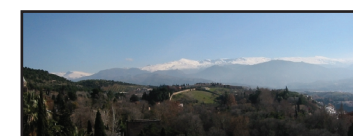
二合一 




八合一 




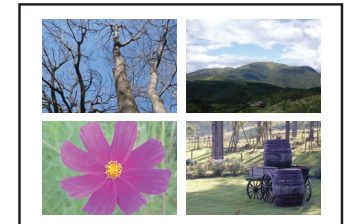
全景版面 
只適用滾筒紙




無邊 (橫印) 
只適用滾筒紙




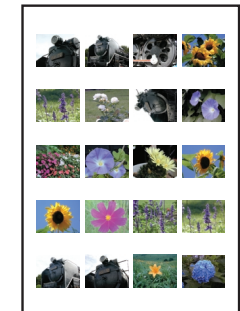
四合一 



三合一 



二十合一 



多樣化尺寸 



若需更多操作資訊，請參考“使用手冊”。