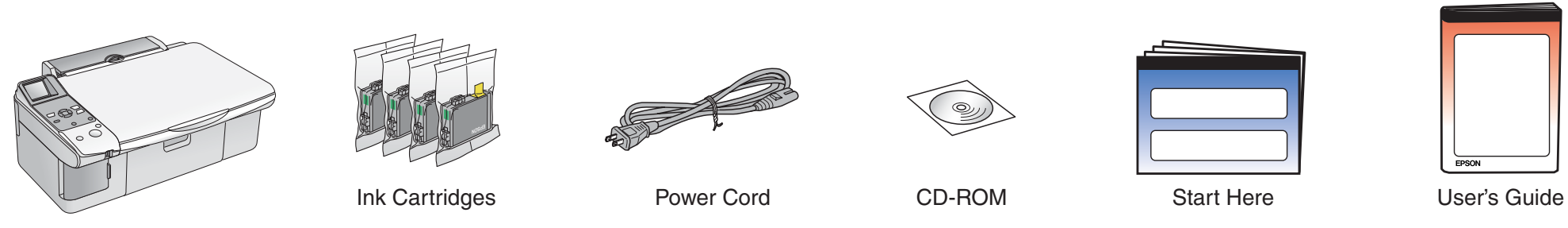
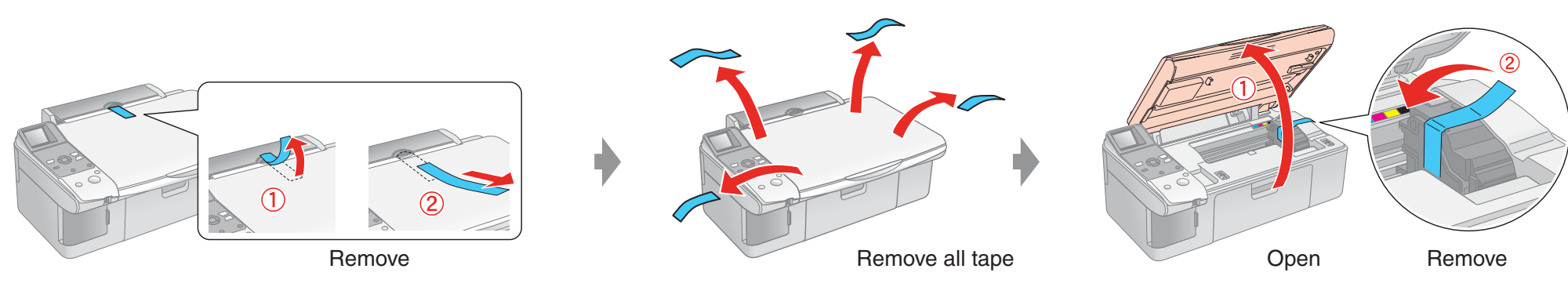


Start Here

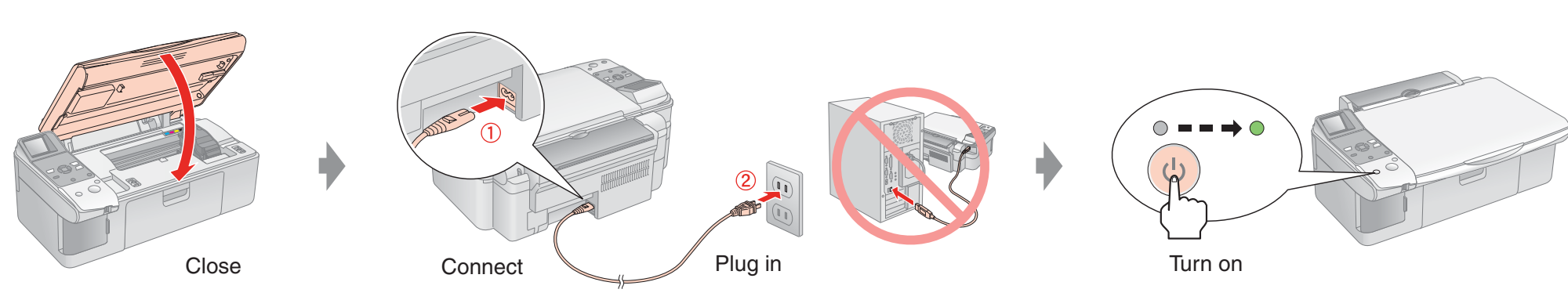
1. Unpacking



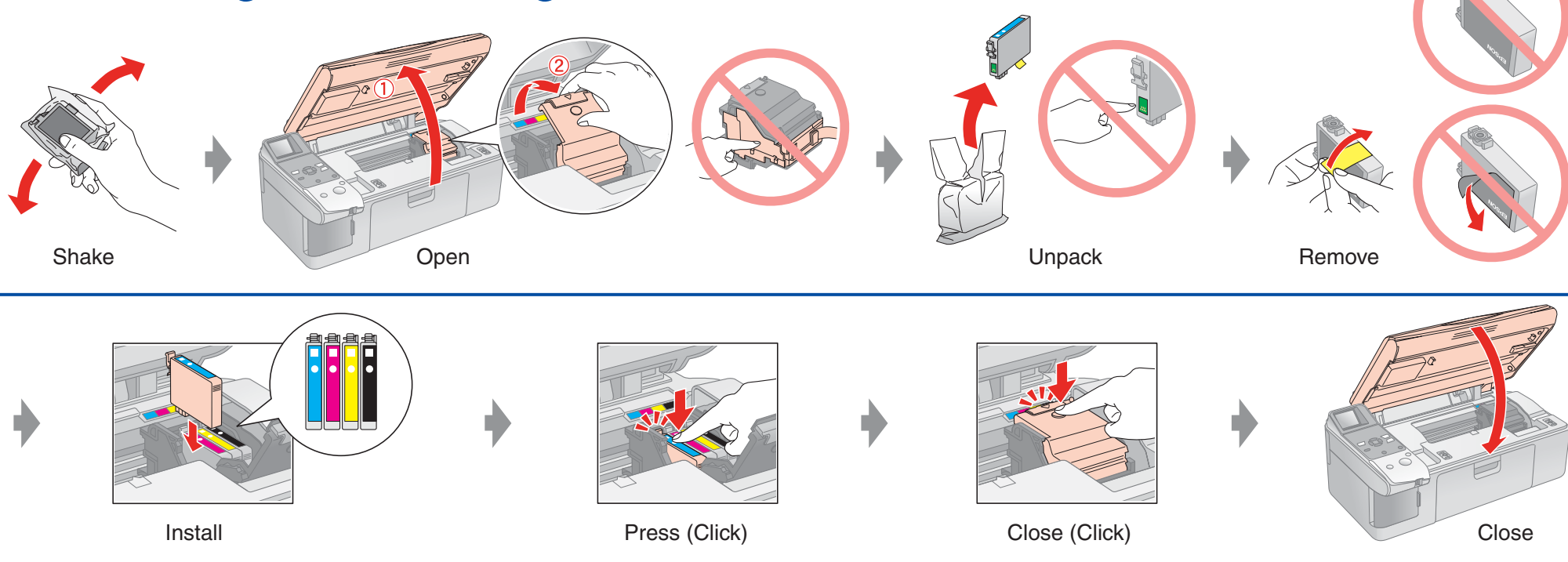
2. Removing Protective Tape



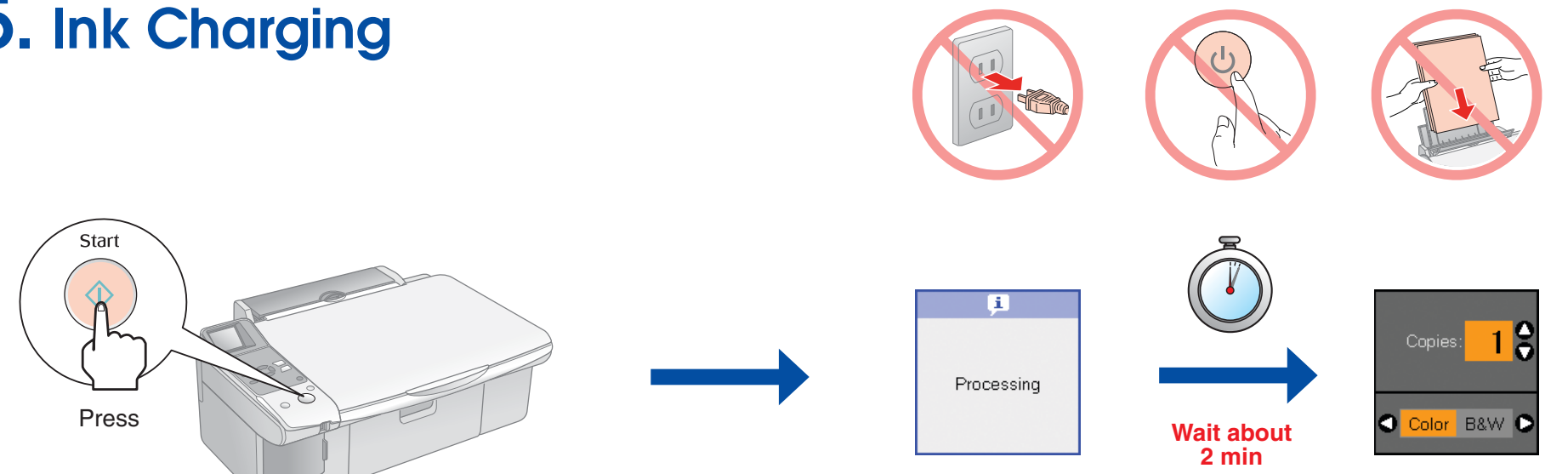
3. Turning On



4. Installing Ink Cartridges



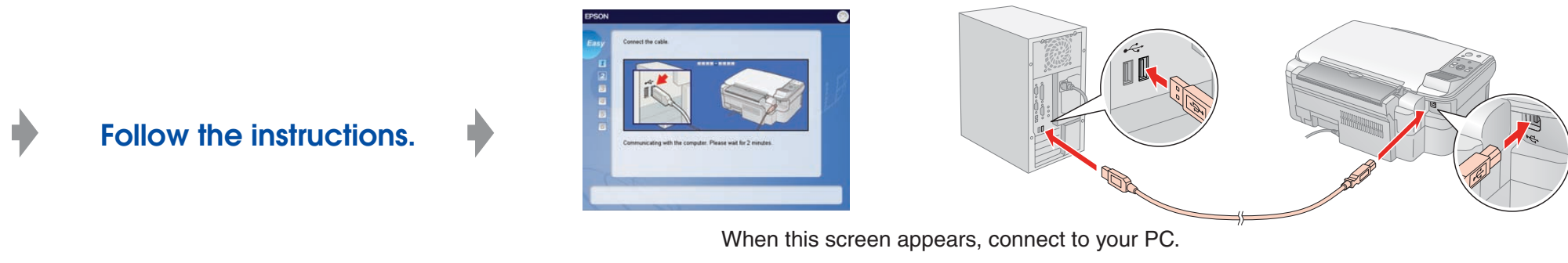
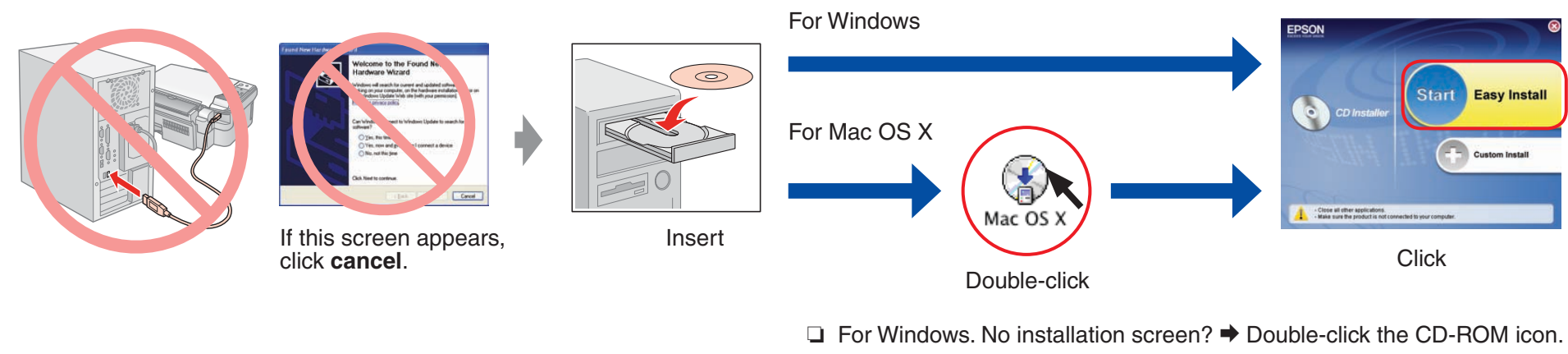
5. Ink Charging



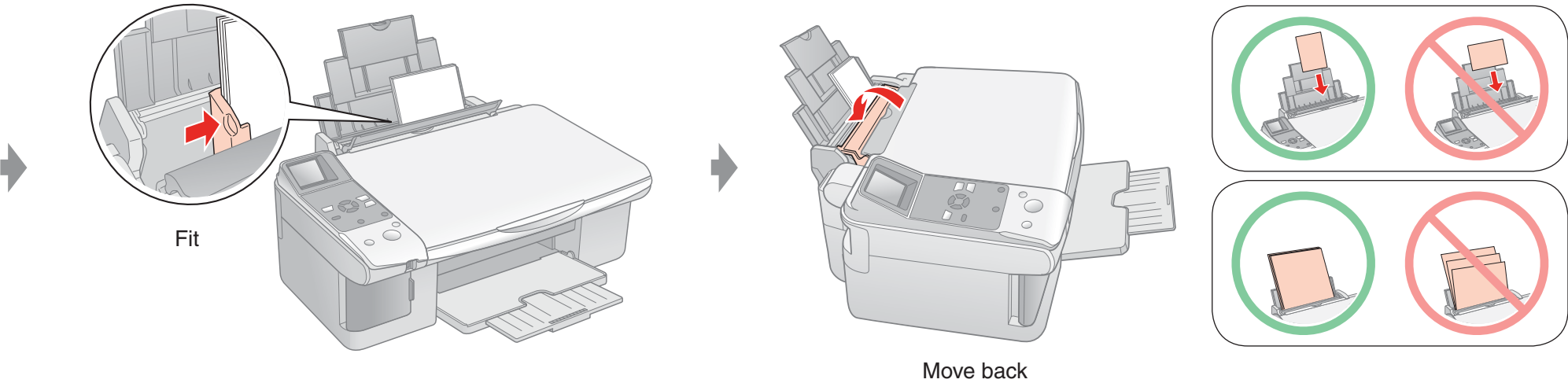
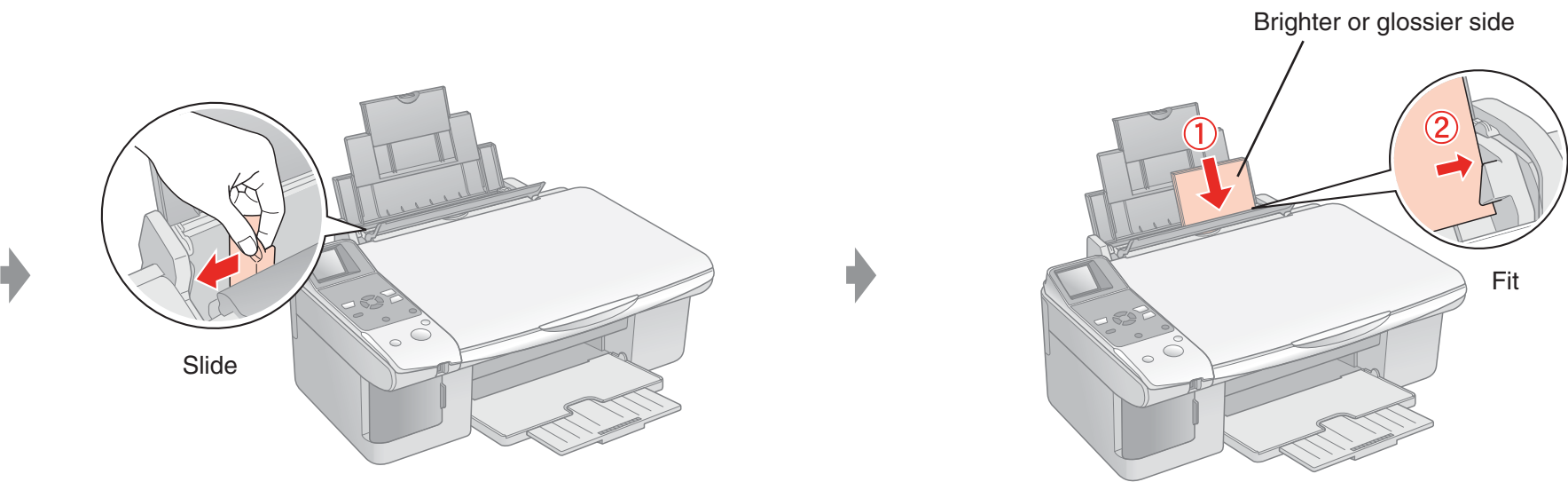
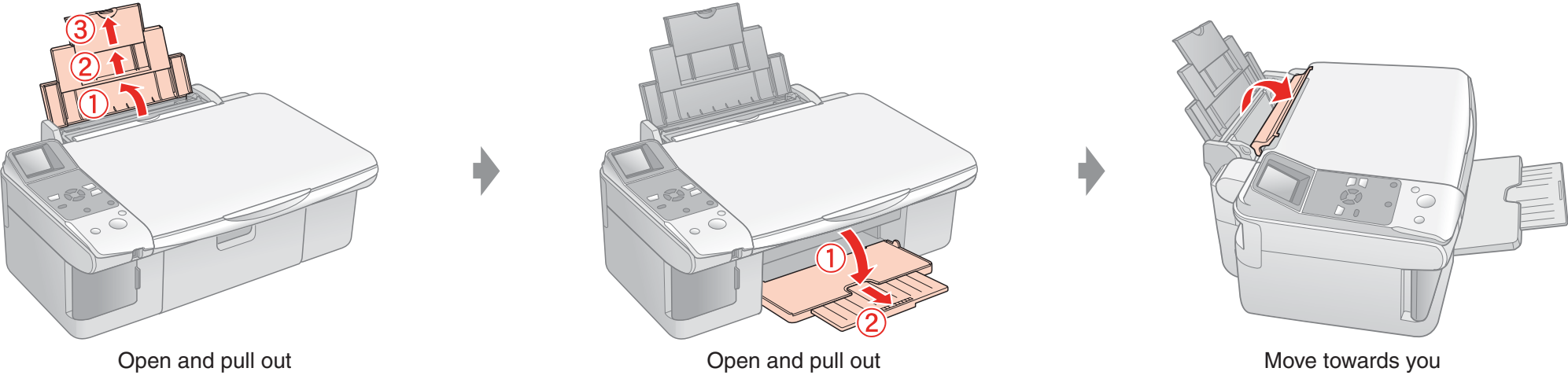
Note:
The ink cartridges first installed in this product will be partly used to charge the print head. Subsequent ink cartridges will last for their full rated life.

6. Installing the Software

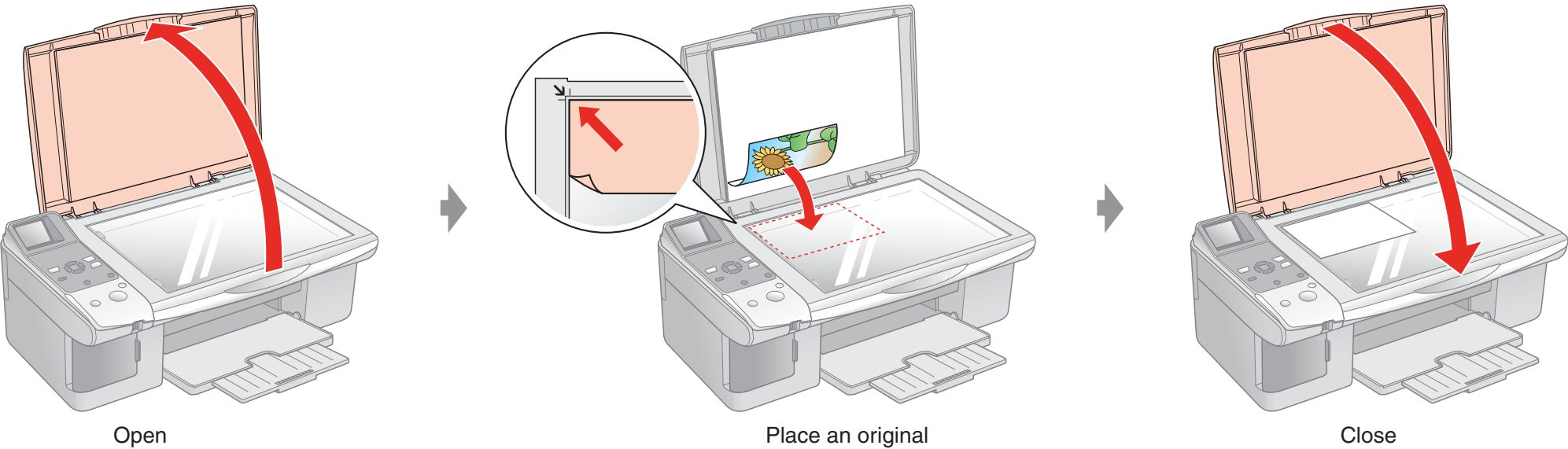
Do not connect the USB cable until you are instructed to do so.



Loading Paper



Placing an Original



Getting More Information

