

# Epson AcuLaser M2310/M2410 Series 安裝說明



\*411972300\*

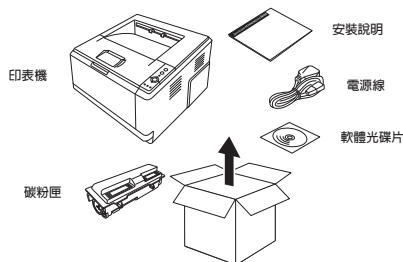
Printed in XXXXXX

EPSON  
EXCEED YOUR VISION

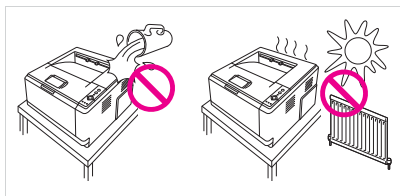
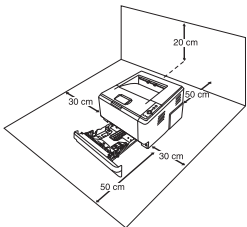


## 1. 清點配件

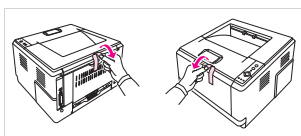
內容物會因國家/地區不同而異



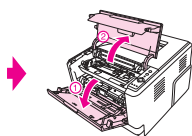
## 2. 尋找印表機擺放的位置



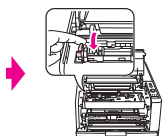
## 3. 移除保護裝置



撕除印表機上的保護膠帶

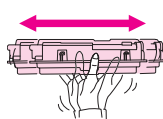


打開萬用進紙匣和上蓋

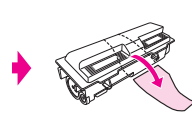


將左側的卡榫向下扳

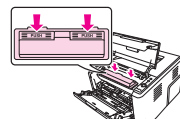
## 4. 安裝碳粉匣



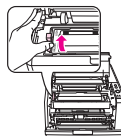
從包裝袋中取出新的碳粉匣，再依照下圖所示，握住碳粉匣輕輕地搖晃數次，讓碳粉匣內的碳粉得以均勻分佈



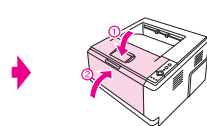
將碳粉匣封條移除



將碳粉匣放入印表機中，並依照圖示，壓下碳粉匣

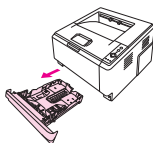


將碳粉匣左側的卡榫向上扳至“LOCK”的位置

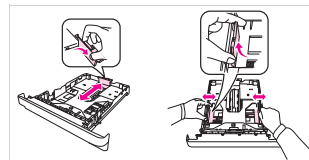


關上上蓋和萬用進紙匣

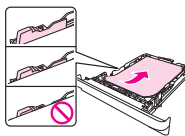
## 5. 放置紙張



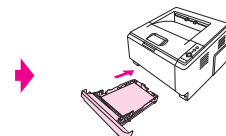
拉出下方進紙匣



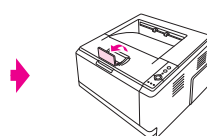
壓住後方紙張邊緣定位器上的卡榫和兩側紙張邊緣定位器上的卡榫，並調整其位置以符合您要放入的紙張大小



請確定整疊紙的高度沒有超過限制的符號標示



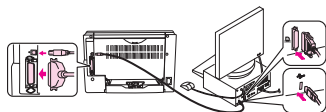
將紙匣重新裝回印表機



向上掀開紙張阻擋器

## 6. 將印表機連接至電腦

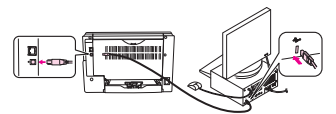
### Epson AcuLaser M2310D/M2410D USB / IEEE 1284



將 USB 或 IEEE1284 連接線連接至印表機，再將連接線的另一端連接至電腦的 USB 或 IEEE1284 界面連接埠

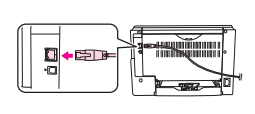
### Epson AcuLaser M2310DN/M2410DN

#### USB



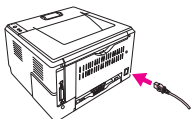
將 USB 連接線連接至印表機，再將連接線的另一端連接至電腦的 USB 界面連接埠

#### 10/100 Base TX

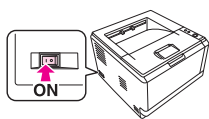


將網路界面連接線連接至印表機

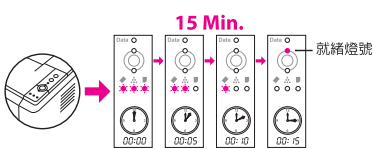
## 7. 設定印表機



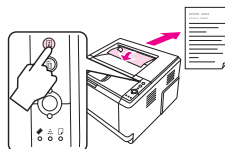
插上電源線



開啟印表機電源

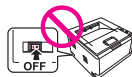


安裝設定印表機過程中，請等待約 15 分鐘，直到「就緒」燈號亮起

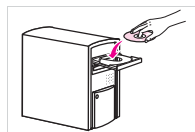


請按一下 [Menu] 鍵列印狀態表。

## 8. 安裝軟體



**警告：**  
在安裝印表機軟體前，請先關閉印表機的電源。



放入軟體光碟片

Mac OS X 使用者



Windows 使用者



若沒有自動出現安裝畫面，請雙擊光碟圖示



請選擇機型並按下「簡易安裝」



請選擇連線方式

依螢幕上的指示操作



安裝完成，請按下「完成」

**Mac OS X 的注意事項：**  
安裝過程中，若出現「認證」視窗時，請輸入管理者的「名稱」及「密碼或密語」，然後按下「好」鍵，再按下「繼續」鍵。

## 其他資訊

### 電力規格

- 額定電壓：110 V
- 額定頻率：60Hz ± 2%
- 額定電流：8.0 A
- 耗電量：列印時平均約 505 W

### 功能規格

- 列印方式：半導體雷射掃描及電子顯影印式
- 解析度：600x600dpi、1200x1200 dpi
- 適用系統：Windows 7、7 x64、Vista、Vista x64、XP、XP x64、2000、Server 2008、Server 2008 x64、Server 2003 或 Server 2003 x64
- Mac OS X 10.4.11 或以上版本

### 注意事項

只能使用印表機標籤上所註明的電源規格。

使用方法：見內附相關說明文件。

### 緊急處理方法

- 發生下列狀況時，請先拔下印表機的電源線並洽詢 Epson 授權服務中心：
  - 電源線或插頭損壞
  - 有液體噴濺到印表機
  - 印表機掉落或機殼已經損壞
- 印表機無法正常操作或列印品質與原來有明顯落差

### 警語

檢修本產品之前，請先拔掉本產品的電源線。

製造年份及製造號碼：見機體標示生產圖例；見機體標示

製造商：SEIKO EPSON CORPORATION  
地址：80 Harasahinden, Hirooka, Shiojiri-shi, Nagano-Ken, 389-0765, JAPAN

電話：81-263-52-2552

進口商：台灣愛普生科技股份有限公司  
地址：台北市信義區松仁路7號14樓  
電話：(02) 8786-6688 (代表號)

No part of this publication may be reproduced, stored in a retrieval system, or transmitted in any form or by any means, mechanical, photocopying, recording, or otherwise, without the prior written permission of Seiko Epson Corporation. No patent liability is assumed with respect to the use of the information contained herein. Neither is any liability assumed for damages resulting from the use of the information contained herein.

Neither Seiko Epson Corporation nor its affiliates shall be liable to the purchaser of this product or third parties for damages, losses, costs, or expenses incurred by purchaser or third parties as a result of: accident, misuse, or abuse of this product or unauthorized modifications, repairs, or alterations to this product, or (excluding the U.S.) failure to strictly comply with Seiko Epson Corporation's operating and maintenance instructions.

Seiko Epson Corporation and its affiliates shall not be liable against any damages or problems arising from the use of any options or any consumable products other than those designated as Original Epson Products or Epson Approved Products by Seiko Epson Corporation.

EPSON is a registered trademark and Epson AcuLaser is a trademark of Seiko Epson Corporation.

Microsoft, Windows, and Windows Vista are registered trademarks of Microsoft Corporation.

General Note: Other product names used herein are for identification purposes only and may be trademarks of their respective owners. Epson disclaims any and all rights in those marks.

Apple and Macintosh are registered trademarks of Apple, Inc.