

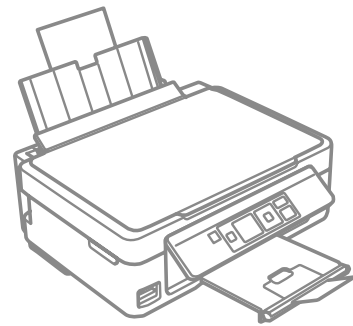
XP-302 / XP-402



EN Start Here

TC 安裝說明

⚠ Cautions must be followed carefully to avoid bodily injury.
務必遵守注意說明，避免造成人身傷害。



© 2012 Seiko Epson Corporation. All rights reserved.
Printed in XXXXXX



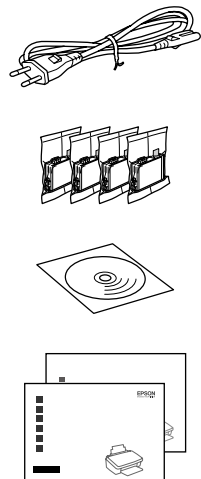
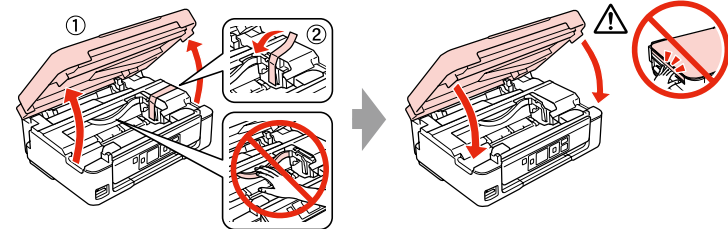
Unpacking 清點配件

1

Contents may vary by location.
內容物會因國家 / 地區而不同。

✎ Do not open the ink cartridge package until you are ready to install it in the printer. The cartridge is vacuum packed to maintain its reliability.
若不安裝至印表機，請勿拆開墨水匣的包裝。為了維持墨水匣列印穩定性，墨水匣採真空包裝。

Remove all protective materials.
移除保護膠帶。



Turning On 開啓電源

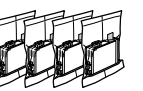
2

- Connect and plug in.
連接電源線並插入電源插座。
- Turn on.
開啓電源。
- Select a language.
選擇語言。

Installing the Ink Cartridges 安裝墨水匣

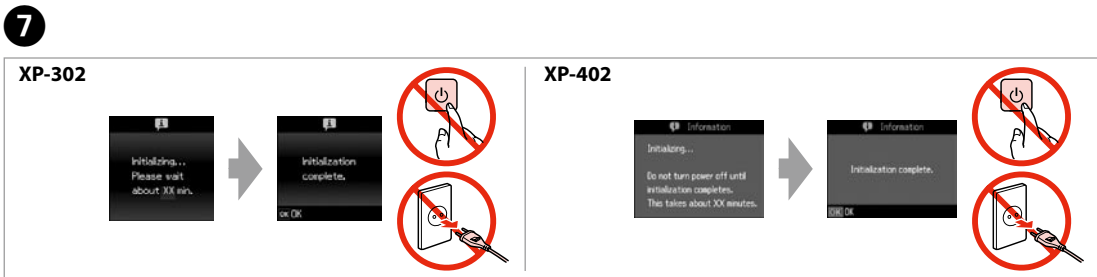
3

✎ For the initial setup, make sure you use the ink cartridges that came with this printer. These cartridges cannot be saved for later use. The initial ink cartridges will be partly used to charge the print head. These cartridges may print fewer pages compared to subsequent ink cartridges.
初次安裝時，務必使用本印表機隨附的墨水匣。這些墨水匣無法保存供日後使用。內附的墨水匣，其中有部分墨水會用在印字頭墨水設定上。這些墨水匣的列印頁數可能少於其後安裝的墨水匣。



- Open.
打開印表機上蓋。
- Shake only BLACK new cartridge. Do not shake other color cartridges.
僅限搖晃新的黑色墨水匣。請勿搖晃其他彩色墨水匣。
- Remove yellow tape.
只撕下黃色標籤。

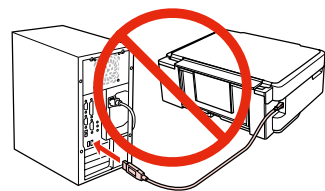
- Insert all four cartridges. Press each one until it clicks.
安裝 4 顆墨水匣，直到卡入為止。
- Close.
關上印表機上蓋。
- Press.
按下。



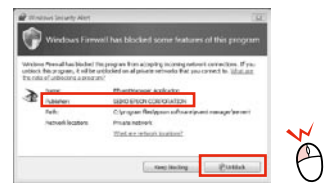
7 Wait.
請稍候。

Connecting to the Computer 將印表機連接至電腦

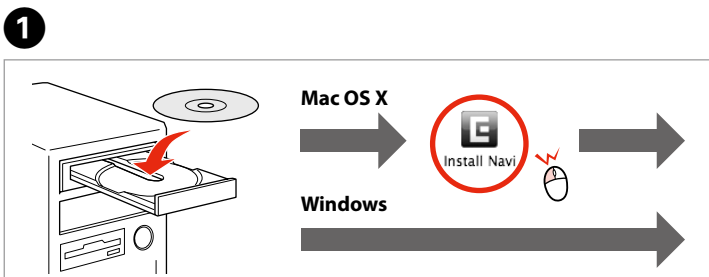
4



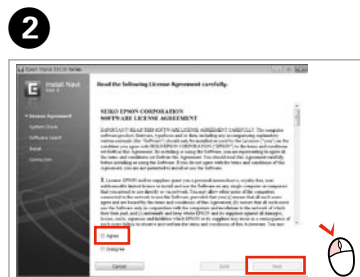
Do not connect the USB cable until you are instructed to do so.
在出現提示前，請勿連接 USB 連接線。



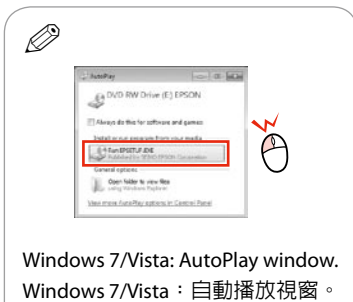
If the Firewall alert appears, allow access for Epson applications.
若出現「防火牆」警示訊息，請確認發行者為 Epson，然後才開啓 Epson 應用程式。



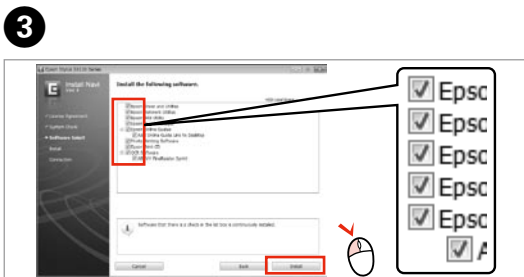
1 Insert.
放入軟體光碟片。



2 Select.
請選擇項目。



Windows 7/Vista: AutoPlay window.
Windows 7/Vista：自動播放視窗。

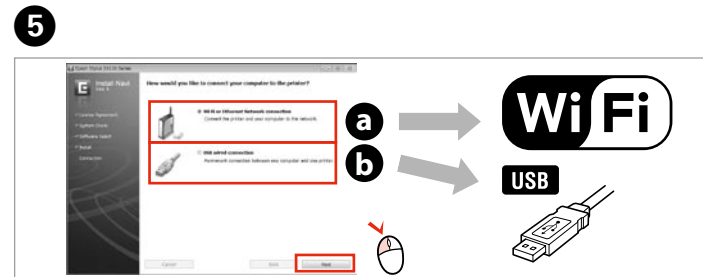


3 Select.
請選擇項目。

Only the software with a selected check box is installed.
Epson Online Guides contain important information such as troubleshooting and error indications. Install them if necessary.
僅限安裝有點選檢查盒的軟體。**Epson 線上進階使用說明**包含解決問題的方法等重要資訊。請視需要安裝。



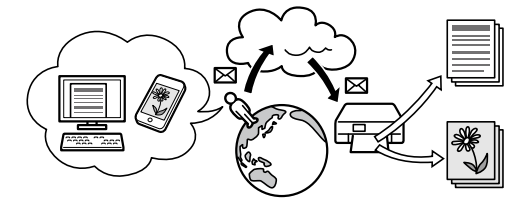
4 View Epson information.
檢視 Epson 資訊。



5 Select **a** or **b**.
點選 **a** 或 **b**。

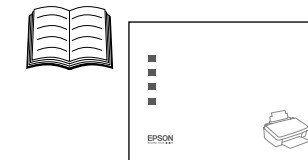
To connect via Wi-Fi, make sure that Wi-Fi is enabled on your computer. Follow the on-screen instructions. If the network connection failed, refer to the online *Network Guide*.
若要透過 Wi-Fi 連線，請確定電腦有啓用 Wi-Fi。請依照螢幕上的指示操作。若網路連線失敗，請參考線上網路使用說明。

i Your printer supports the Epson Connect service. This service allows you to print from anywhere to your Epson printer.
您購買的印表機支援 Epson Connect 服務。這項服務允許您從任何地方列印至您的 Epson 印表機。

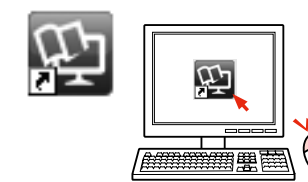


➔ <https://www.epsonconnect.com/>

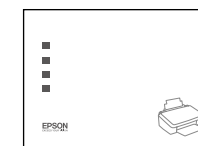
Getting More Information 取得更多的資訊



See the booklet for the most basic information.
請參考使用說明的基本資訊。



Three online manuals are installed from the CD.
軟體光碟片含有 3 本線上使用說明。



Basic Operation Guide (PDF file)
使用手冊 (PDF 檔)



User's Guide (HTML file)
進階使用說明 (HTML 檔)



Network Guide (HTML file)
網路使用說明 (HTML 檔)

? No online manuals? ➔ Insert the CD and select **Epson Online Guides** in the installer screen.
沒有線上使用說明？ ➔ 請放入軟體光碟片，並在安裝畫面中選擇 **Epson 線上進階使用說明**。