

Procedure may vary depending on your OS.
程序可能視作業系統而異。

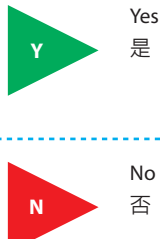


604E 57060

604E 57060 / MB3446X4-1
Copyright© 2011 Seiko Epson Corporation. All rights reserved.
Printed in China

1

Setup Method 設定方式



Confirm your computer's network settings, and then choose what to do next. Follow the instructions for the environment in which your network devices such as a wireless router or a wireless adapter work properly.

Windows 7

- 1 Select **Start** → **Control Panel** → **Network and Internet**.
- 2 Click **Network and Sharing Center**.
- 3 Click **Change adapter settings**.

- 1 選擇 **Start**(開始) → **Control Panel** (控制台) → **Network and Internet** (網路及網際網路)。
- 2 按一下 **[Network and Sharing Center (網路和共用中心)]**。
- 3 按一下 **[Change adapter settings (變更介面卡設定)]**。

Windows XP

- 1 Select **start** → **Control Panel** → **Network and Internet Connections**.
- 2 Click **Network Connections**.

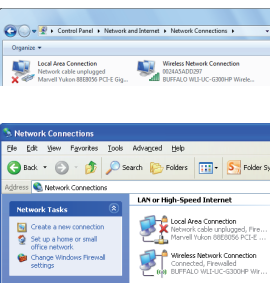
- 1 選擇 **start** (開始) → **Control Panel** (控制台) → **Network and Internet Connections** (網路及網際網路連線)。
- 2 按一下 **Network Connections** (網路連線) 圖示。

Mac OS X

- 1 Select **System Preferences** from the Apple Menu.
- 2 Click **Network** icon.

- 1 在蘋果選單中選擇 **System Preferences** (系統偏好設定)。
- 2 按一下 **Network** (網路) 圖示。

Q1



Is there the **Wireless Network Connection** icon?
是否出現 **Wireless Network Connection** (無線網路連接) 圖示？

Y

7 Wireless LAN (Wi-Fi) connection is available.
可使用無線 LAN (Wi-Fi) 連接。

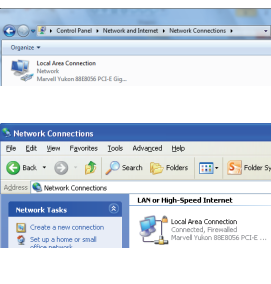


7 Wireless LAN (Ad Hoc) connection is available.
可使用無線 LAN (Ad Hoc) 連接。



N

Q2



Is there the **Local Area Connection** icon?
是否出現 **Local Area Connection** (區域連線) 圖示？

Y

7 Wired LAN connection is available.
可使用有線 LAN 連接。

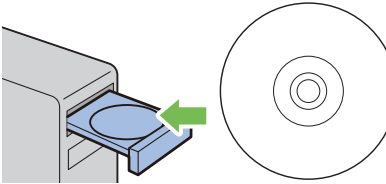


7 Network connection is not available.
無法使用網路連接。



N

Refer to User's Guide for more information.
請參閱進階使用說明瞭解更多資訊。



You need to setup network environment for your computer.
您需要為電腦安裝網路環境。

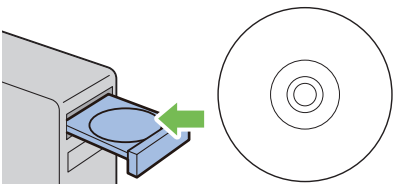
2

Configuring Wireless Settings 進行無線設定

Be sure to get the SSID and security information from a system administrator in advance when you use other than WPS.

使用非 WPS 的方式時，請務必事先向系統管理員索取 SSID 與安全性資訊。

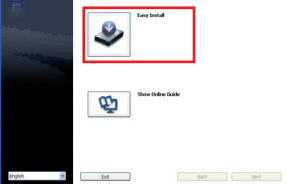
1



Insert the **Software Disc** provided with the printer in your computer.

將印表機隨附的 **Software Disc** 放入電腦。

2



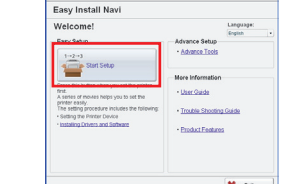
Click **Easy Install**.
按一下 **[Easy Install]**。

3



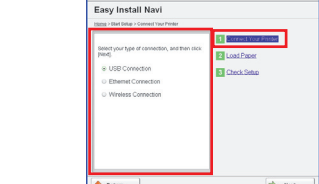
If you agree to the terms of the **SOFTWARE LICENSE AGREEMENT**, select **Agree** and then click **Next**.
若同意 **SOFTWARE LICENSE AGREEMENT** (軟體授權合約) 的條款，請選擇 **[Agree (同意)]** 後再按 **[Next (下一步)]**。

4



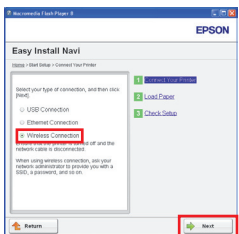
Click **Start Setup**.
按一下 **[Start Setup (開始設定)]**。

5



Click **Connect Your Printer**. Select your type of connection screen appears.
按一下 **[Connect Your Printer (連接印表機)]**。即顯示 **[選擇連線類型]** 畫面。

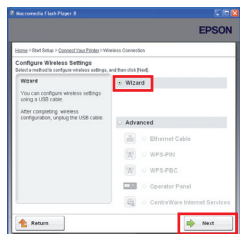
6



Select **Wireless Connection**, and then click **Next**. The setting method selection window appears.

選擇 **[Wireless Connection (無線連接)]**，再按一下 **[Next (下一步)]**。即顯示 **[選擇設定方式]** 視窗。

7

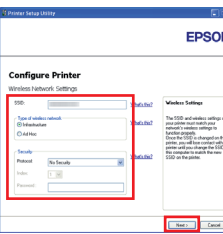


Ensure that **Wizard** is selected, and then click **Next**. Follow the on-screen instructions to connect the USB cable.

確認已選擇 **Wizard (精靈)**，再按一下 **[Next (下一步)]**。依照畫面上的指示連接 **USB 纜線**。

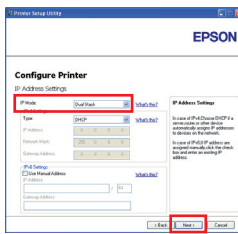
If you select **Advanced**, refer to User's Guide for more information.
若您選擇 **[Advanced (進階)]**，請參閱進階使用說明瞭解更多資訊。

8



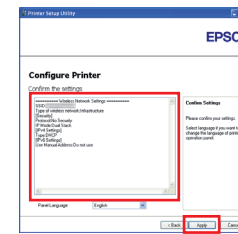
Enter the **SSID** and select **Type of wireless network**. Configure the security setting, and then click **Next**.
輸入 **SSID** 並選擇 **Type of wireless network (無線網路的種類)**。設定安全性設定，再按一下 **[Next (下一步)]**。

9



Select **IP Mode** depending on your network scheme, and then click **Next**.
根據您的網路配置選擇 **[IP Mode (IP 模式)]**，然後按一下 **[Next (下一步)]**。

10

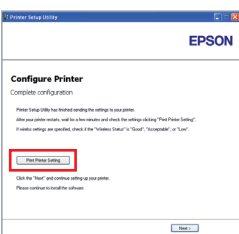


Ensure that the wireless settings are displayed, and then click **Apply**. The Complete configuration screen appears.
確認畫面上的無線網路設定後，按一下 **[Apply (套用)]**。將出現完成設定畫面。

Wait a few minutes until the printer re-starts to establish the wireless network.
請稍待片刻，讓印表機重新建立無線網路。

請稍待片刻，讓印表機重新建立無線網路。

11



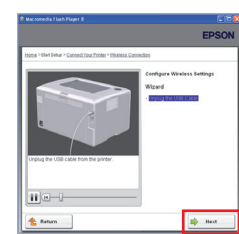
Click **Print Printer Setting**, and confirm that "Wireless Status" is "Good", "Acceptable" or "Low" on the report.

按一下 **[Print Printer Setting (列印印表機設定(P))]**，並確認報告上的 **[Wireless Status]** 為 **[Good]**、**[Acceptable]** 或 **[Low]**。

When "Wireless Status" is "No Reception", check if the wireless settings are correctly configured. To reconfigure the wireless settings, click **Next** on the Complete configuration screen and then click **Return**.

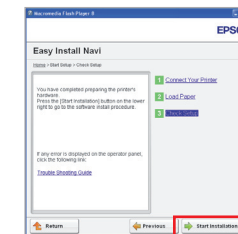
[Wireless Status] 顯示 **[No Reception]** 時，請檢查無線網路是否已正確設定。若要重新設定無線網路，按一下完成設定畫面的 **[Next (下一步)]**，再按一下 **[Return (返回)]**。

12



Click **Next**. Follow the on-screen instructions to disconnect the USB cable.
按一下 **[Next (下一步)]**。依照畫面上的指示拔除 **USB 纜線**。

13



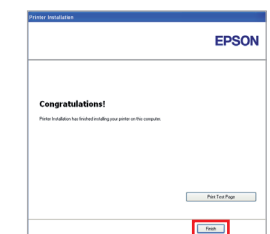
Confirm there are no errors displayed on the LCD panel, and then click **Start Installation**. Follow the instructions until the "Congratulations!" screen appears.

在 LCD 面板上確認無誤後，按一下 **[Start Installation (開始安裝)]**。請遵照指示，直到顯示 **[Congratulations! (恭喜!)]** 畫面為止。

If the printer to be installed is not listed in the **Select Printer** screen, try the following steps:
• Click **Refresh** to update the information.
• Click **Manually add using IP address**, and then enter the details of the printer manually.

若欲安裝的印表機沒有列在 **[Select Printer (選擇印表機)]** 畫面中，請嘗試下列步驟：
• 按一下 **[Refresh (更新(R))]** 以更新資訊。
• 按一下 **[Manually add using IP address (使用IP位址手動新增(M))]**，再手動輸入印表機的詳細資訊。

14



Click **Finish**. Set up is complete.
按一下 **[Finish (結束)]**。完成設定。



412058400

3

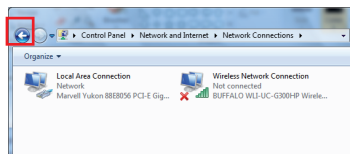
Ad Hoc Settings for Windows Windows 的 Ad Hoc 設定

The procedure to set up Ad Hoc by computer depends on your OS, computer, and the manufacturer of your wireless devices. For details, refer to the documentation of the wireless devices or contact the manufacturer's customer support. The following section describes setup for Windows XP or 7 standard settings. Even if you have a wireless network connection, the printer and computer may not be able to communicate in your environment when you make the Ad Hoc settings described in this section. Set up an Ad Hoc connection only when you use direct wireless communication between the printer and computer.

設定電腦的 Ad Hoc 程序視作業系統、電腦及無線裝置製造商而定。如需詳細資訊，請參閱無線裝置的說明文件或聯絡製造商的客戶支援。下列章節說明設定 Windows XP 或 Windows 7 的標準設定，即使您已有無線網路連接，但在您完成本章節說明的 Ad Hoc 設定後，印表機及電腦仍可能無法於您的環境中通訊。只有在您於印表機與電腦間使用直接無線通訊時，才能設定 Ad Hoc 連接。

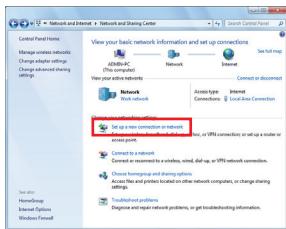
Windows 7

1



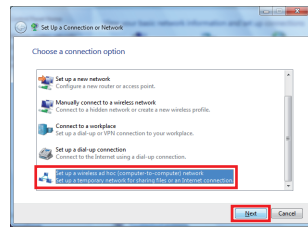
Return to the **Network and Sharing Center** window.
返回 Network and Sharing Center (網路和共用中心) 視窗。

2



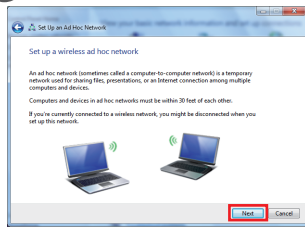
Click **Set up a new connection or network**.
按一下 [Set up a new connection or network (設定新連接或網路)]。

3



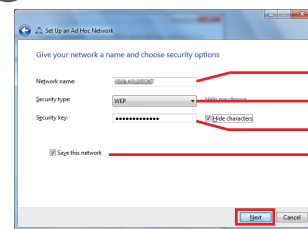
Select **Set up a wireless ad hoc (computer-to-computer) network**, and then click **Next**.
選擇 [Set up a wireless ad hoc (computer-to-computer) network (設定隨機操作 (電腦對電腦) 網路)]，再按一下 [Next (下一步)]。

4



Click **Next**.
按一下 Next (下一步)。

5



Make settings, and then click **Next**.
完成設定，再按一下 [Next (下一步)]。

(Windows 7)
Network name:
(Windows XP)
Network name (SSID):
Enter a name using any of the characters below.

(Windows 7)
Network name (網路名稱):
(Windows XP)
Network name (SSID) (網路名稱):
使用以下任一字元輸入名稱。

0123456789
!#\$%&'()*+,-./:
ABCDEFGHIJKLMNOPQRSTUVWXYZ
abcdefghijklmnopqrstuvwxyz
[\]^_`{|}~<=>?@

(Windows 7)
Security type:
(Windows XP)
Data encryption:
Select WEP.

(Windows 7)
Security type (安全類型):
(Windows XP)
Data encryption (資料加密):
選擇 WEP。

(Windows 7)
Security key:
(Windows XP)
Network key:
Enter a word using 5 or 13 characters.

(Windows 7)
Security key (安全金鑰):
(Windows XP)
Network key (網路金鑰):
輸入 5 或 13 個字元的文字。

(Windows 7)
Save this network:
Select this checkbox.
(Windows 7)
Save this network
(儲存此網路):
選擇此核取方塊。

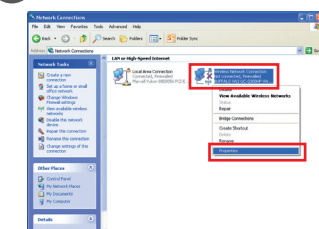
(Windows XP)
The key is provided for me automatically:
Clear this box to enter the security key.
(Windows XP)
The key is provided for me automatically
(金鑰會自動地提供給我):
清除此方塊以輸入安全金鑰。

Windows XP

Depending on your environment, you may not be able to use the function to obtain an IP address automatically. In that case, you need to set a static IP address. For details, refer to the documentation of your computer or wireless devices.

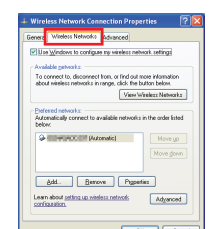
視您的環境而定，有可能無法使用功能來自動取得 IP 位址。在此情況下，您需要設定靜態 IP 位址。如需詳細資訊，請參閱電腦或無線裝置的說明文件。

1



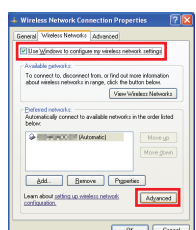
Right-click **Wireless Network Connection** and select **Properties**.
在 Wireless Network Connection (無線網路連接) 圖示上按一下滑鼠右鍵，再選擇 Properties (內容)。

2



Select the **Wireless Networks** tab.
選擇 Wireless Networks (無線網路) 標籤。

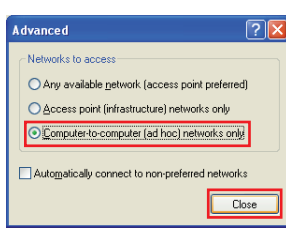
3



Ensure that the check box for **Use Windows to configure my wireless network settings** is selected, and then click **Advanced**.

確認已選擇 [Use Windows to configure my wireless network settings (使用 Windows 來設定無線網路設定)] 核取方塊，然後按一下 [Advanced (進階)]。

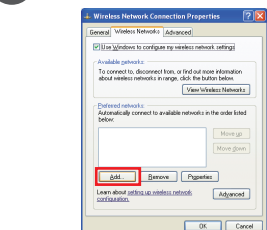
4



Select **Computer-to-Computer (ad hoc) networks only**, and then click **Close**.

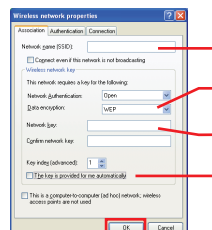
選擇 [Computer-to-Computer (ad hoc) networks only (僅電腦對電腦 (隨機操作) 網路)] 後按一下 [Close (關閉)]。

5



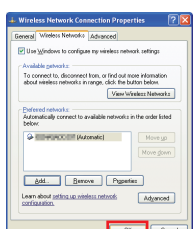
Click **Add**.
按一下 [Add (新增)]。

6



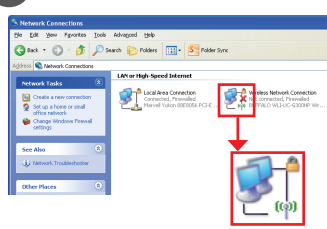
Make settings, and then click **OK**.
完成設定，再按一下 [OK (確定)]。

7



Click **OK**.
按一下 [OK (確定)]。

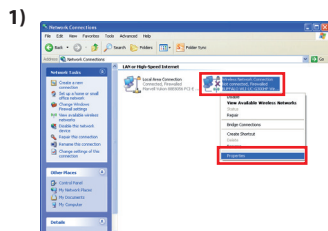
8



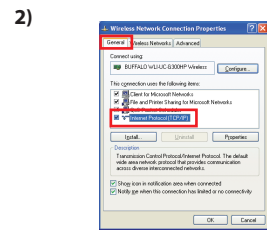
Wait until the **✗** icon disappears.
請稍候至 **✗** 圖示消失。

If the **✗** icon does not disappear after 5 minutes, follow the steps.

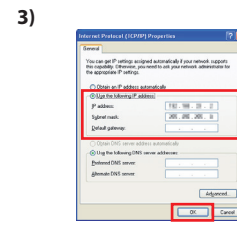
若 **✗** 圖示未在 5 分鐘後消失，請依步驟操作。



Right-click **Wireless Network Connection** and select **Properties**.
在 Wireless Network Connection (無線網路連接) 圖示上按一下滑鼠右鍵，再選擇 Properties (內容)。



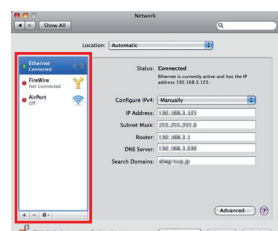
Double-click **Internet Protocol (TCP/IP)** from the **General** tab.
在 [General (一般)] 標籤中按兩下 [Internet Protocol (TCP/IP) (網際網路通訊協定)]。



Select **Use the following IP address**. Enter the value above as the **IP address** and **Subnet mask** and click **OK**, and then click **OK** at the 2) screen.
選擇 [Use the following IP address (使用下列 IP 位址)]。輸入以上 IP address (IP 位址) 及 Subnet mask (子網路遮罩) 的數值，然後按一下 [OK (確定)]，再於 2) 畫面中按一下 [OK (確定)]。

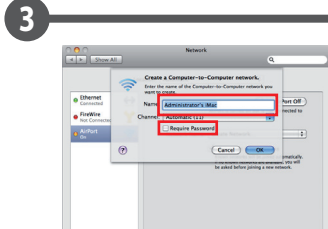
4

For Mac OS X 使用 Mac OS X



Check the connection condition and follow the following instructions.
檢查連接情形並遵守下列指示。

For later use, jot down the network name and password.
如要稍後使用，請記下網路名稱及密碼。



Enter a network name, and then select the **Require Password** checkbox.
輸入網路名稱，再選擇 [Require Password (需要密碼)] 核取方塊。

Wireless LAN (Wi-Fi) connection is available.
可使用無線 LAN (Wi-Fi) 連接。

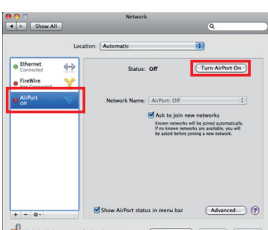
9

Wired LAN connection is available. Refer to User's Guide for more information.
可使用有線 LAN 連接。請參閱隨附使用說明瞭解更多資訊。

Wireless LAN (Ad Hoc) connection is available. Proceed to the following steps.
可使用無線 LAN (Ad Hoc) 連接。請繼續下列步驟。

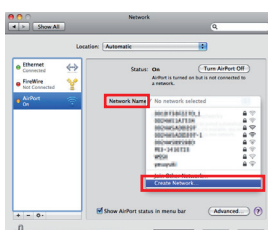
Network connection is not available. You need to setup network environment for your Mac.
無法使用網路連接。您需要為 Mac 安裝網路環境。

1

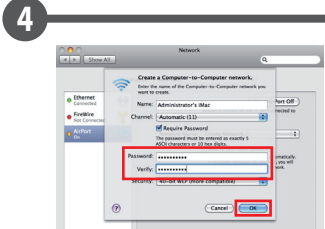


Select **AirPort**, and then click **Turn AirPort On**.
選擇 [AirPort]，再按一下 [Turn AirPort On (開啟 AirPort)]。

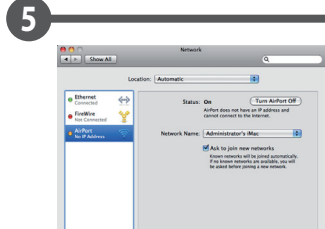
2



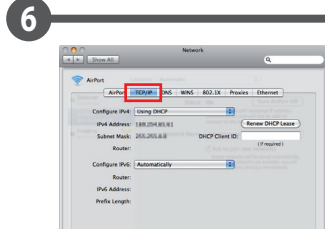
From the **Network Name** list, select **Create Network**.
在 [Network Name (網路名稱)] 清單中選擇 [Create Network (建立網路)]。



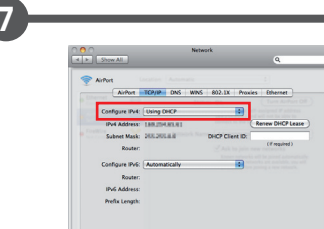
Enter a password, and then click **OK**.
輸入密碼，再按一下 [OK (確定)]。



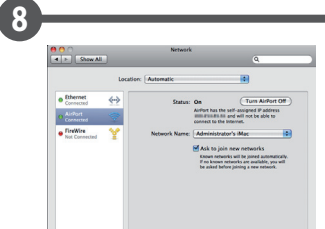
Click **Advanced**.
按一下 [Advanced (進階)]。



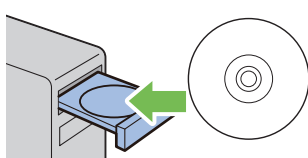
Click **TCP/IP**.
按一下 [TCP/IP]。



Select **Using DHCP** from the **Configure IPv4** list, and then click **OK**.
在 [Configure IPv4 (設定 IPv4)] 清單中選擇 [Using DHCP (使用 DHCP)]，然後按一下 [OK (確定)]。



Click **Apply**.
按一下 [Apply (套用)]。



Software Installation Guide
Software Installation Guide