

WP-M4011

EPSON
EXCEED YOUR VISION

EN Setup Guide

TC 安裝說明

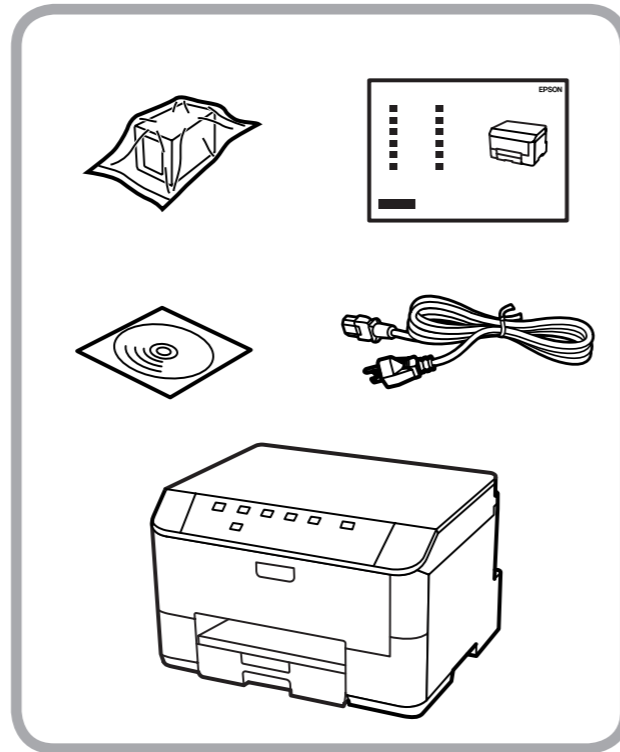


412551100

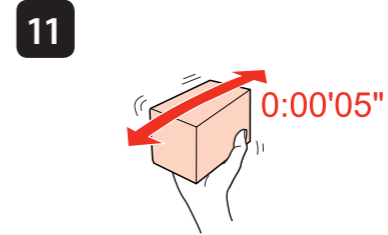
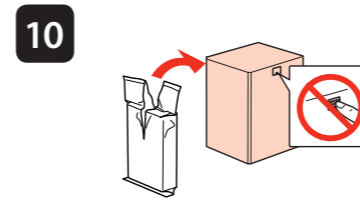
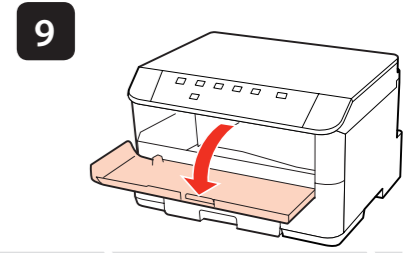
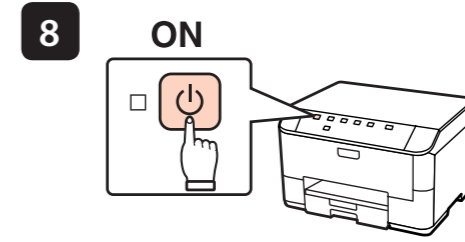
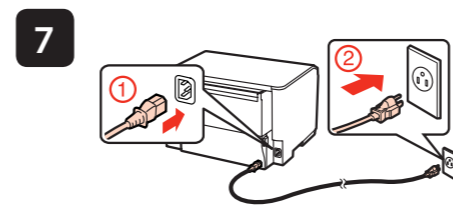
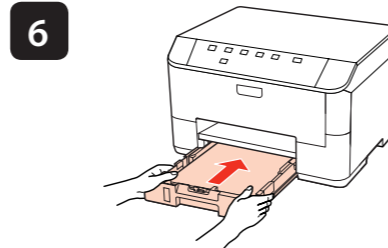
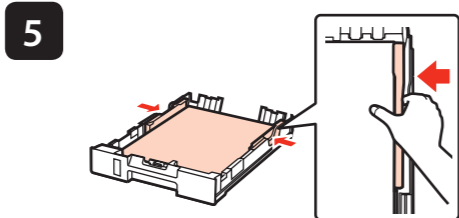
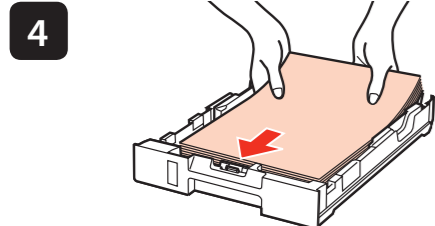
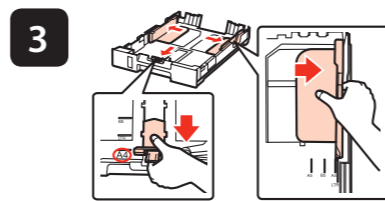
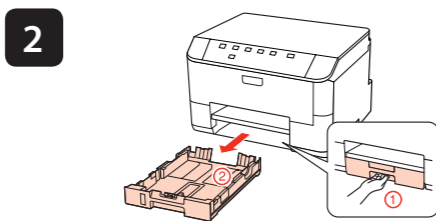
© 2013 Seiko Epson Corporation. All rights reserved.
Printed in XXXXXX

Contents may vary by location.
內容物會因國家 / 地區而不同。

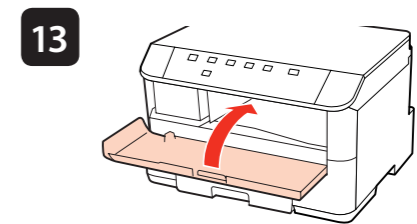
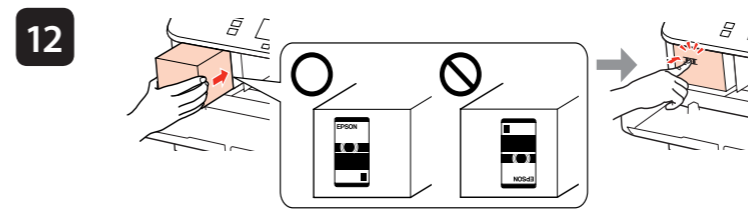
For the initial setup, make sure you use the ink cartridge that came with this printer.
初次安裝時，務必使用本印表機內附的墨水匣。



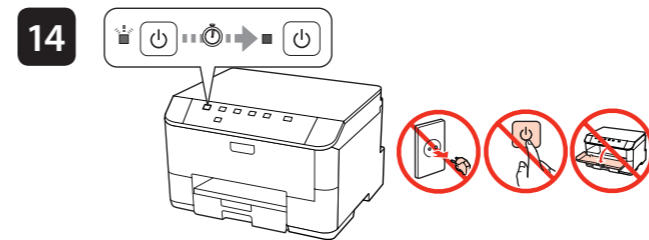
1 Remove all protective materials.
移除保護膠帶。



Unpack and gently shake the new cartridge.
打開包裝並輕輕搖晃新墨水匣。



Insert the cartridge into the slot until it clicks and close the cover. Initial ink charging will automatically start.
將墨水匣插入墨水匣槽，並關上護蓋。墨水設定將會自動開始。



Wait about 7 min.
大約等待 7 分鐘。

During the initial ink charging, never do the following; turn off the printer, unplug the power cord, open the front cover, and detach the rear unit.
在墨水設定期間，切勿執行下列操作：關閉印表機電源、拔出電源線、打開前蓋及拆下後方裝置。



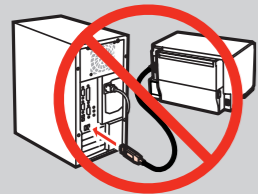
The initial ink cartridge will be partly used to charge the print head. The cartridge may print fewer pages compared to subsequent ink cartridges.
內附的墨水匣，其中有部分墨水會用在印字頭墨水設定上。這些墨水匣的列印頁數可能少於其後安裝的墨水匣。



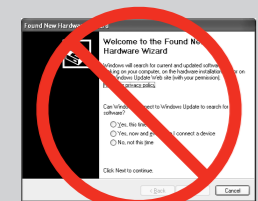
15

Now install CD and follow the instructions.
現在放入光碟並依照指示操作。

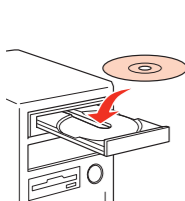
16



Do not connect the USB cable until you are instructed to do so.
在出現提示前，請勿連接 USB 連接線。



If this screen appears, click **Cancel**.
若出現此畫面，請按下 [取消] 鍵。



Mac OS X

Windows



17

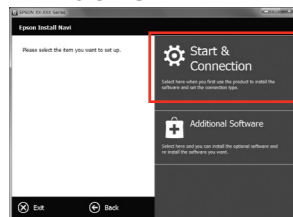


Select.
請選擇項目。

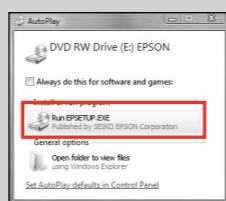
18

Select and follow the instructions.
請點選並依照指示操作。

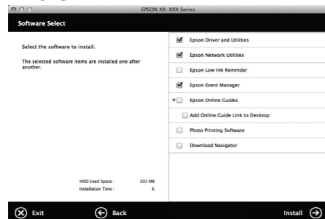
Windows



Windows7/Vista: AutoPlay window
Windows7/Vista：自動播放視窗



Mac

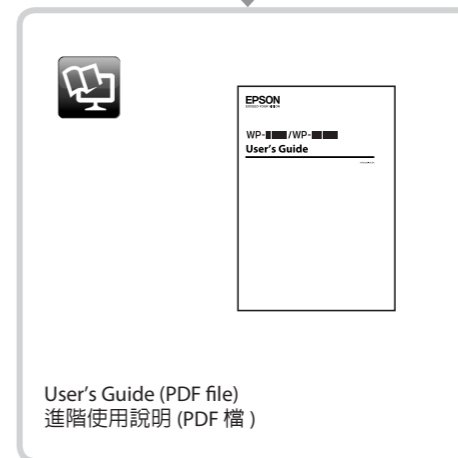


Only the software with a selected check box is installed. **Epson Online Guides** contain important information such as troubleshooting and error indications. Install them if necessary.
僅限安裝有點選檢查盒的軟體。〔Epson 線上進階使用說明〕包含解決問題的方法等重要資訊。請視需要安裝。

Getting More Information
取得更多的資訊



Two online manuals are installed from the CD.
軟體光碟片含有兩本線上使用說明。



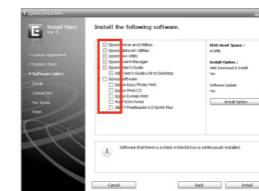
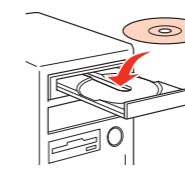
User's Guide (PDF file)
進階使用說明 (PDF 檔)



Network Guide (HTML file)
網路使用說明 (HTML 檔)

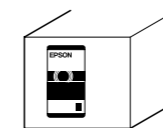


No online manuals? → Install the CD and select **Epson Online Guides** in the installer screen.
沒有線上使用說明？→ 請放入軟體光碟片，並在安裝畫面中選擇 **Epson 線上進階使用說明**。



To read the online guide, you must have Adobe Acrobat Reader 5.0 or later, or Adobe Reader, installed on your computer.
若想瀏覽線上使用說明，您必須於電腦中安裝 Adobe Acrobat Reader 5.0 以上版本或 Adobe Reader。

Genuine Epson ink
Epson 原廠墨水



T7441/T7431* *T7431 is available only in Taiwan. °

Look for the number above to find your ink cartridge.
請查看上方號碼以找到您的墨水匣。

Information for Users in Taiwan Only / 此資訊僅適用於台灣地區

- 產品名稱：噴墨印表機
- 額定電壓：AC 100 - 240 V
- 額定頻率：50 - 60 Hz
- 耗電量：列印時，約 22 W
- 就緒模式：約 5.0 W
- 睡眠模式：約 2.2 W
- 關機模式：約 0.3 W
- 額定電流：0.5 - 0.25 A

製造年份，製造號碼和生產國別：見機體標示

警語

檢修本產品之前，請先拔掉本產品的電源線。

功能規格

- 列印方式：微針點壓電噴墨技術
- 解析度：最大可達 1200 x 600 dpi
- 適用系統：Windows 7、Vista、XP Professional x64 Edition、XP SP1 或以上版本、Server 2008 R2、Server 2008、Server 2003 和 Mac OS X 10.5.x、10.6.x、10.7.x

使用方法

見內附相關說明文件

緊急處理方法

- 發生下列狀況時，請先拔掉印表機的電源線並洽詢 Epson 授權服務中心：
 - 電源線或插頭損壞
 - 有液體噴灑到印表機

印表機摔落或機殼損壞

- 印表機無法正常操作或是列印品質與原來有明顯落差

製造商：SEIKO EPSON CORPORATION
地址：80 Harashinden, Hirooka, Shiojiri-shi, Nagano-ken, 399-0785, JAPAN

電話：81-263-52-2552
進口商：台灣愛普生科技股份有限公司
地址：台北市信義區松仁路 7 號 14 樓
電話：(02) 8786-6688 (代表號)

注意事項

- 只能使用印表機標籤上所註明的電源規格。
- 請保持工作場所的通風良好。